

Converting Colors

CIELCh(78, 6.132, 8.995)

Have a look what the booklet for
CIELCh(78, 6.132, 8.995) contains.

CIELCh(78, 6.077, 9.710)	3
<i>Conversions</i>	4
<i>Details</i>	6
<i>Harmonies</i>	11
<i>Previews</i>	20
<i>Color Blindness Simulation</i>	23
<i>CSS Examples</i>	26

Color

CIELCh(78, 6.077, 9.710)

Conversions

Conversions Part 1

Format	Color
Hex	CDBDBF
RGB	205, 189, 191
RGB Percent	80%, 74%, 75%
CMY	0.1956, 0.2583, 0.2505
CMYK	0.00, 0.08, 0.07, 0.20
HSL	353°, 14%, 77%
HSV	353°, 8%, 80%
XYZ	52.8529, 53.2120, 56.8465
YIQ	194.0120, 8.8940, 4.0140

Conversions

Conversions Part 2

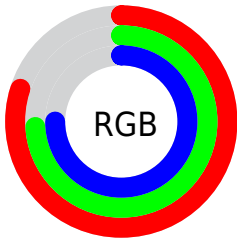
Format	Color
RYB	205, 189, 191
Decimal	13483455
CIELab	78.00, 5.99, 1.02
CIElCh	78, 6.077, 9.710
Yxy	53.2120, 0.3244, 0.3266
Android (android.graphics.Color)	4291673535 (0xFFCDBDBF)
YUV	194.0120, -1.4849, 9.6365
Hunter-Lab	72.9466, 1.6743, 4.8585

Details

The CIELCh color **78, 6.077, 9.710** is a light color, and the websafe version is hex **CCCCCC**. A complement of this color would be **81, 5.851, 188.609**, and the grayscale version is **78, 0.009, 296.813**.

A 20% lighter version of the original color is **97, 3.691, 3.442**, and **58, 6.076, 9.247** is the 20% darker color. If you saturate the color by 10%, you get **72, 14.299, 10.778**, and if you desaturate by 10%, it is **84, 1.657, 189.303**.

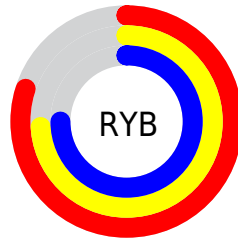
Distribution



Red (80%)

Green (74%)

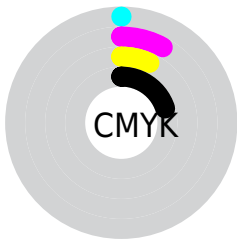
Blue (75%)



Red (80%)

Yellow (74%)

Blue (75%)

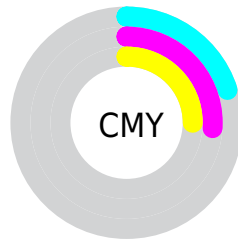


Cyan (0%)

Magenta (8%)

Yellow (7%)

Black (20%)



Cyan (20%)

Magenta (26%)

Yellow (25%)

Brightness & Saturation Gradients

These gradients show how the CIELCh color 78, 6.077, 9.710 changes by changing the brightness by 10 percent. The first figure shows a shift by +10% for each color and the second figure -10%.

Similar to the brightness gradients but the following saturation gradients show a change of the CIELCh color 78, 6.077, 9.710 by changing the saturation by 10% instead.

 78, 6.077, 9.710

 78, 6.077, 9.710

 100, 6.077, 9.710

 68, 6.077, 9.710

 98, 6.077, 9.710

 58, 6.077, 9.710

 48, 6.077, 9.710

 38, 6.077, 9.710

 28, 6.077, 9.710

 18, 6.077, 9.710

 8, 6.077, 9.710

 0, 6.077, 9.710

 78, 6.077, 9.710

 78, 6.077, 9.710

72, 14.299, 10.778

84, 1.657, 189.303

67, 22.992, 12.012

89, 8.908, 188.326

62, 32.077, 13.528

95, 15.710,
187.688

57, 41.396, 15.429

97, 16.523,
198.408

53, 50.706, 17.840

49, 59.691, 20.899

46, 68.034, 24.706

44, 75.496, 29.206

43, 81.891, 33.939

Harmonies

Complementary

The Complementary color scheme is a pair of colors which are on the opposite of each other on the color wheel.



78, 6.077, 9.710



81, 5.851, 188.609

Rectangle

The Rectangle color scheme consists of four colors that form a rectangle on the color wheel.



78, 6.077, 9.710



78, 6.077, 59.710



78, 6.077, 189.710



78, 6.077, 239.710

Sweetspot

The Sweet Spot groups the original color and five complimentary colors.



78, 6.075, 9.725



99, 1.828, 8.965



78, 9.986, 321.107



53, 1.039, 8.938



0, 0.000, 0.000



53, 0.007, 296.813

Same Dimension

The Same Dimension uses a secret algorithm to generate beautiful new colors.



78, 6.075, 9.725



94, 8.399, 9.860



79, 4.898, 59.019



40, 4.421, 9.888



34, 70.417, 34.076



4, 18.039, 13.280

Inverse Universe

The Inverse Universe completely reimagines the original color for something new.



78, 6.075, 9.725



94, 8.399, 9.860



80, 4.736, 240.695



40, 4.421, 9.888



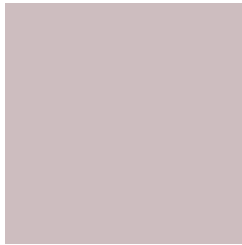
34, 70.417, 34.076



4, 18.039, 13.280

Previews

White Background



This preview shows how the CIELCh color 78, 6.077, 9.710 looks on a white background.

Color Contrast Check

Large Text (above 18pt) WCAG AA × Fail

Any Text WCAG AA × Fail

Large Text (above 18pt) WCAG AAA × Fail

Any Text WCAG AAA × Fail

Black Background



This preview shows how the CIELCh color 78, 6.077, 9.710 looks on a black background.

Color Contrast Check

Large Text (above 18pt) WCAG AA ✓ Pass

Any Text WCAG AA ✓ Pass

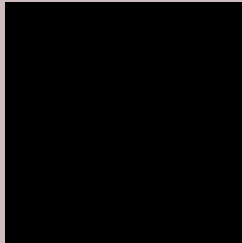
Large Text (above 18pt) WCAG AAA ✓ Pass

Any Text WCAG AAA ✓ Pass

If you want to check with other color combinations, try the [Color Contrast Checker](#).

CIELCh 78, 6.077, 9.710

Background



This preview shows how black text looks on a background with the CIELCh color 78, 6.077, 9.710.



This preview shows how white text looks on a background with the CIELCh color 78, 6.077, 9.710.

Color Blindness Simulation

Color vision deficiency is a very complex topic, and I could not describe the different causes any better than Wikipedia does, so if you want to learn more, you should check out their [article about color blindness](#).

Dichromacy



Original Color

78, 6.077, 9.710

Protanopia

78, 1.579, 359.395

Deuteranopia

78, 9.750, 4.321



Tritanopia
78, 10.915, 332.936

Trichromacy



Original Color
78, 6.077, 9.710

Protanomaly
78, 3.020, 9.289

Deuteranomaly
78, 8.514, 5.562

Tritanomaly
78, 8.559, 341.417

Monochromacy



Original Color
78, 6.077, 9.710

Achromatopsia
78, 0.009, 296.813

Achromatomaly
78, 2.289, 5.865

CSS Examples

Text

The CSS property to change the color of the text to CIELCh 78, 6.077, 9.710 is called "color". The color property can be set on classes, ids or directly on the HTML element.

This example shows how text in the color `rgb(205, 189, 191)` looks like.

```
.text, #text, p{  
    color:rgb(205, 189, 191)  
}
```

If you want to add a text shadow in that color use the text-shadow property, you can generate a text shadow directly with our [CSS Text Shadow Generator](#).

Here you see how black text with a 4 pixel rgb(205, 189, 191) colored shadow looks like.

```
.shadow{ text-shadow: 4px 4px 2px rgb(205, 189, 191) }
```

Border

The CSS property to change the border of an element to CIELCh 78, 6.077, 9.710 is called "border". The border property can be set on classes, ids or directly on the HTML element.

This example shows the color as border, it can be applied via the CSS property "border" or "border-color".

```
.border, #border, table{ border:4px solid rgb(205, 189, 191) }
```

If only the border color should be changed use the property `border-color`.

```
.border{ border-color:rgb(205, 189, 191) }
```

If you want to add a box shadow in that color use:

Here you see how a box with a 4 pixel `rgb(205, 189, 191)` colored shadow looks like.

```
.boxshadow{ -moz-box-shadow:4px 4px 4px  
4px rgb(205, 189, 191); -webkit-box-  
shadow:4px 4px 4px 4px rgb(205, 189, 191);  
box-shadow:4px 4px 4px 4px rgb(205, 189,  
191) }
```

Background

The CSS property to change the background color of an element to CIELCh 78, 6.077, 9.710 is called "background". The background property can be set on classes, ids or directly on the HTML element.

```
.background, #background, body{  
background: rgb(205, 189, 191) }
```

If only the background color should be changed can be used:

```
.background{ background-color: rgb(205,  
189, 191) }
```

This example shows the color as background, it is applied via the CSS property "background".

To optimize and compress your CSS code, you can use our [online CSS compressor and optimizer](#) based on csstidy. If you want to create a linear or radial gradient as background or border, check our [CSS Gradient Generator](#).

Hey! You found this booklet interesting? Support Converting Colors with the new Membership Option!

The pro membership hides all ads, plus gives you double the colors in the color bucket, and more awesome pro features!

[Learn more, Memberships starting at \\$2.50/m!](#)

**Follow me
on Twitter!**

@ConvertingColor