

Converting Colors

CIELCh(78, 7.462, 17.137)

Have a look what the booklet for
CIELCh(78, 7.462, 17.137) contains.

CIELCh(78, 7.538, 15.899)	3
<i>Conversions</i>	4
<i>Details</i>	6
<i>Harmonies</i>	11
<i>Previews</i>	20
<i>Color Blindness Simulation</i>	23
<i>CSS Examples</i>	26

Color

CIELCh(78, 7.538, 15.899)

Conversions

Conversions Part 1

Format	Color
Hex	D0BCBD
RGB	208, 188, 189
RGB Percent	82%, 74%, 74%
CMY	0.1833, 0.2617, 0.2578
CMYK	0.00, 0.10, 0.09, 0.18
HSL	357°, 18%, 78%
HSV	357°, 10%, 82%
XYZ	53.3401, 53.2120, 55.7523
YIQ	194.0940, 11.5990, 4.5510

Conversions

Conversions Part 2

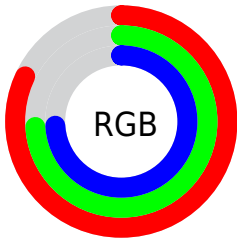
Format	Color
R _Y B	208, 188, 189
Decimal	13679805
CIE Lab	78.00, 7.25, 2.06
CIE LCh	78, 7.538, 15.899
Yxy	53.2120, 0.3286, 0.3279
Android (android.graphics.Color)	4291869885 (0xFFD0BCBD)
YUV	194.0940, -2.5113, 12.1956
Hunter-Lab	72.9466, 2.8667, 5.7479

Details

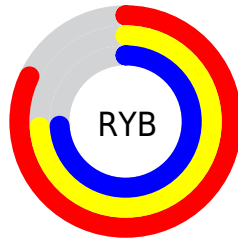
The CIELCh color **78, 7.538, 15.899** is a light color, and the websafe version is hex **CCCCCC**. A complement of this color would be **82, 7.133, 194.703**, and the grayscale version is **79, 0.010, 296.813**.

A 20% lighter version of the original color is **97, 3.938, 12.069**, and **58, 7.640, 15.911** is the 20% darker color. If you saturate the color by 10%, you get **72, 15.946, 16.874**, and if you desaturate by 10%, it is **84, 0.298, 197.134**.

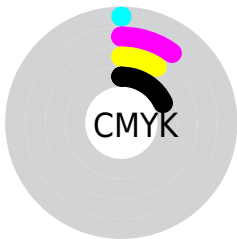
Distribution



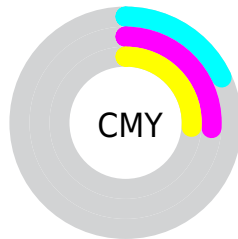
- Red (82%)
- Green (74%)
- Blue (74%)



- Red (82%)
- Yellow (74%)
- Blue (74%)



- Cyan (0%)
- Magenta (10%)
- Yellow (9%)
- Black (18%)



- Cyan (18%)
- Magenta (26%)
- Yellow (26%)

Brightness & Saturation Gradients

These gradients show how the CIELCh color 78, 7.538, 15.899 changes by changing the brightness by 10 percent. The first figure shows a shift by +10% for each color and the second figure -10%.

Similar to the brightness gradients but the following saturation gradients show a change of the CIELCh color 78, 7.538, 15.899 by changing the saturation by 10% instead.

 78, 7.538, 15.899

 78, 7.538, 15.899

 100, 7.538, 15.899

 68, 7.538, 15.899

 98, 7.538, 15.899

 58, 7.538, 15.899

 48, 7.538, 15.899

 38, 7.538, 15.899

 28, 7.538, 15.899

 18, 7.538, 15.899

 8, 7.538, 15.899

 0, 7.538, 15.899

 78, 7.538, 15.899

 78, 7.538, 15.899

72, 15.946, 16.874

84, 0.298, 197.134

67, 24.924, 18.047

90, 7.581, 194.713

62, 34.406, 19.533

96, 14.359,
194.175

57, 44.248, 21.440

97, 15.543,
198.472

52, 54.214, 23.888

49, 63.989, 26.982

46, 73.207, 30.717

44, 81.368, 34.791

43, 87.539, 38.203

Harmonies

Complementary

The Complementary color scheme is a pair of colors which are on the opposite of each other on the color wheel.



78, 7.538, 15.899



82, 7.133, 194.703

Rectangle

The Rectangle color scheme consists of four colors that form a rectangle on the color wheel.



78, 7.538, 15.899



78, 7.538, 65.899



78, 7.538, 195.899



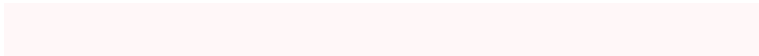
78, 7.538, 245.899

Sweetspot

The Sweet Spot groups the original color and five complimentary colors.



78, 7.536, 15.913



98, 2.710, 15.241



78, 12.782, 323.573



52, 2.060, 15.351



0, 0.000, 0.000



53, 0.007, 296.813

Same Dimension

The Same Dimension uses a secret algorithm to generate beautiful new colors.



78, 7.536, 15.913



92, 11.200, 16.144



80, 6.305, 68.660



41, 4.464, 15.895



35, 74.408, 37.810



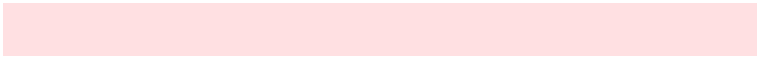
4, 20.022, 17.143

Inverse Universe

The Inverse Universe completely reimagines the original color for something new.



78, 7.536, 15.913



92, 11.200, 16.144



80, 6.118, 251.063



41, 4.464, 15.895



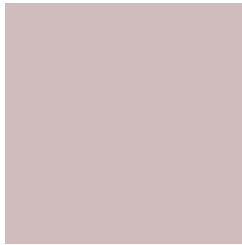
35, 74.408, 37.810



4, 20.022, 17.143

Previews

White Background



This preview shows how the CIELCh color 78, 7.538, 15.899 looks on a white background.

Color Contrast Check

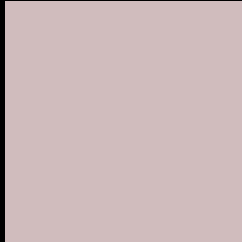
Large Text (above 18pt) WCAG AA × Fail

Any Text WCAG AA × Fail

Large Text (above 18pt) WCAG AAA × Fail

Any Text WCAG AAA × Fail

Black Background



This preview shows how the CIELCh color 78, 7.538, 15.899 looks on a black background.

Color Contrast Check

Large Text (above 18pt) WCAG AA ✓ Pass

Any Text WCAG AA ✓ Pass

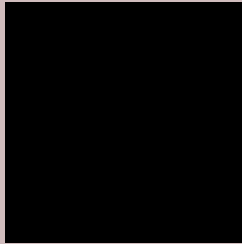
Large Text (above 18pt) WCAG AAA ✓ Pass

Any Text WCAG AAA ✓ Pass

If you want to check with other color combinations, try the [Color Contrast Checker](#).

CIELCh 78, 7.538, 15.899

Background



This preview shows how black text looks on a background with the CIELCh color 78, 7.538, 15.899.



This preview shows how white text looks on a background with the CIELCh color 78, 7.538, 15.899.

Color Blindness Simulation

Color vision deficiency is a very complex topic, and I could not describe the different causes any better than Wikipedia does, so if you want to learn more, you should check out their [article about color blindness](#).

Dichromacy



Original Color

78, 7.538, 15.899

Protanopia

78, 1.922, 35.386

Deuteranopia

78, 9.922, 10.922



Tritanopia
78, 11.968, 338.301

Trichromacy



Original Color
78, 7.538, 15.899

Protanomaly
78, 3.762, 27.702

Deuteranomaly
78, 9.168, 10.077

Tritanomaly
78, 9.772, 347.051

Monochromacy



Original Color
78, 7.538, 15.899

Achromatopsia
78, 0.009, 296.813

Achromatomaly
78, 2.595, 19.405

CSS Examples

Text

The CSS property to change the color of the text to CIELCh 78, 7.538, 15.899 is called "color". The color property can be set on classes, ids or directly on the HTML element.

This example shows how text in the color `rgb(208, 188, 189)` looks like.

```
.text, #text, p{  
    color:rgb(208, 188, 189)  
}
```

If you want to add a text shadow in that color use the text-shadow property, you can generate a text shadow directly with our [CSS Text Shadow Generator](#).

Here you see how black text with a 4 pixel rgb(208, 188, 189) colored shadow looks like.

```
.shadow{ text-shadow: 4px 4px 2px rgb(208, 188, 189) }
```

Border

The CSS property to change the border of an element to CIELCh 78, 7.538, 15.899 is called "border". The border property can be set on classes, ids or directly on the HTML element.

This example shows the color as border, it can be applied via the CSS property "border" or "border-color".

```
.border, #border, table{ border:4px solid rgb(208, 188, 189) }
```

If only the border color should be changed use the property `border-color`.

```
.border{ border-color:rgb(208, 188, 189) }
```

If you want to add a box shadow in that color use:

Here you see how a box with a 4 pixel `rgb(208, 188, 189)` colored shadow looks like.

```
.boxshadow{ -moz-box-shadow:4px 4px 4px  
4px rgb(208, 188, 189); -webkit-box-  
shadow:4px 4px 4px 4px rgb(208, 188, 189);  
box-shadow:4px 4px 4px 4px rgb(208, 188,  
189) }
```

Background

The CSS property to change the background color of an element to CIELCh 78, 7.538, 15.899 is called "background". The background property can be set on classes, ids or directly on the HTML element.

```
.background, #background, body{  
background: rgb(208, 188, 189) }
```

If only the background color should be changed can be used:

```
.background{ background-color: rgb(208,  
188, 189) }
```

This example shows the color as background, it is applied via the CSS property "background".

To optimize and compress your CSS code, you can use our [online CSS compressor and optimizer](#) based on csstidy. If you want to create a linear or radial gradient as background or border, check our [CSS Gradient Generator](#).

Hey! You found this booklet interesting? Support Converting Colors with the new Membership Option!

The pro membership hides all ads, plus gives you double the colors in the color bucket, and more awesome pro features!

[Learn more, Memberships starting at \\$2.50/m!](#)

**Follow me
on Twitter!**

@ConvertingColor