

Converting Colors

CIELCh(78, 7.464, 20.436)

Have a look what the booklet for
CIELCh(78, 7.464, 20.436) contains.

CIELCh(78, 7.532, 19.943)	3
<i>Conversions</i>	4
<i>Details</i>	6
<i>Harmonies</i>	11
<i>Previews</i>	20
<i>Color Blindness Simulation</i>	23
<i>CSS Examples</i>	26

Color

CIELCh(78, 7.532, 19.943)

Conversions

Conversions Part 1

Format	Color
Hex	D0BCBC
RGB	208, 188, 188
RGB Percent	82%, 74%, 74%
CMY	0.1830, 0.2614, 0.2614
CMYK	0.00, 0.10, 0.10, 0.18
HSL	0°, 18%, 78%
HSV	0°, 10%, 82%
XYZ	53.2745, 53.2120, 55.2270
YIQ	193.9800, 11.9200, 4.2400

Conversions

Conversions Part 2

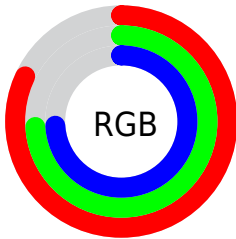
Format	Color
R _Y B	208, 188, 188
Decimal	13679804
CIE Lab	78.00, 7.08, 2.57
CIE LCh	78, 7.532, 19.943
Yxy	53.2120, 0.3294, 0.3291
Android (android.graphics.Color)	4291869884 (0xFFD0BCBC)
YUV	193.9800, -2.9481, 12.2955
Hunter-Lab	72.9466, 2.7060, 6.1748

Details

The CIELCh color **78, 7.532, 19.943** is a light color, and the websafe version is hex **CCCCCC**. A complement of this color would be **82, 7.089, 198.980**, and the grayscale version is **79, 0.010, 296.813**.

A 20% lighter version of the original color is **97, 3.905, 19.499**, and **58, 7.639, 20.139** is the 20% darker color. If you saturate the color by 10%, you get **72, 15.988, 20.807**, and if you desaturate by 10%, it is **84, 0.298, 201.317**.

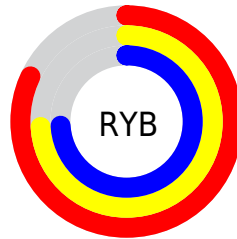
Distribution



Red (82%)

Green (74%)

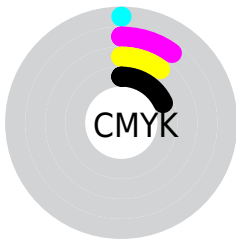
Blue (74%)



Red (82%)

Yellow (74%)

Blue (74%)

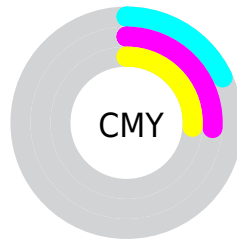


Cyan (0%)

Magenta (10%)

Yellow (10%)

Black (18%)



Cyan (18%)

Magenta (26%)

Yellow (26%)

Brightness & Saturation Gradients

These gradients show how the CIELCh color 78, 7.532, 19.943 changes by changing the brightness by 10 percent. The first figure shows a shift by +10% for each color and the second figure -10%.

Similar to the brightness gradients but the following saturation gradients show a change of the CIELCh color 78, 7.532, 19.943 by changing the saturation by 10% instead.

 78, 7.532, 19.943

 78, 7.532, 19.943

 100, 7.532, 19.943

 68, 7.532, 19.943

 98, 7.532, 19.943

 58, 7.532, 19.943

 48, 7.532, 19.943

 38, 7.532, 19.943

 28, 7.532, 19.943

 18, 7.532, 19.943

 8, 7.532, 19.943

 0, 7.532, 19.943

 78, 7.532, 19.943

 78, 7.532, 19.943

72, 15.988, 20.807

84, 0.298, 201.317

67, 25.084, 21.871

90, 7.535, 198.988

62, 34.771, 23.252

96, 14.237,
198.562

57, 44.926, 25.056

97, 15.521,
198.473

52, 55.323, 27.393

49, 65.638, 30.334

46, 75.407, 33.796

44, 83.777, 37.277

43, 89.562, 39.896

Harmonies

Complementary

The Complementary color scheme is a pair of colors which are on the opposite of each other on the color wheel.



78, 7.532, 19.943



82, 7.089, 198.980

Rectangle

The Rectangle color scheme consists of four colors that form a rectangle on the color wheel.



78, 7.532, 19.943



78, 7.532, 69.943



78, 7.532, 199.943



78, 7.532, 249.943

Sweetspot

The Sweet Spot groups the original color and five complimentary colors.



78, 7.530, 19.958



98, 2.702, 19.358



79, 12.984, 324.946



52, 2.054, 19.460



0, 0.000, 0.000



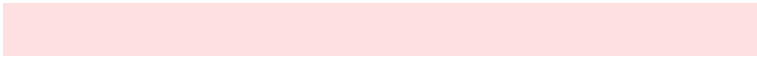
53, 0.007, 296.813

Same Dimension

The Same Dimension uses a secret algorithm to generate beautiful new colors.



78, 7.530, 19.958



92, 11.198, 20.160



81, 6.487, 74.195



41, 4.459, 19.942



35, 76.452, 39.866



4, 20.016, 19.476

Inverse Universe

The Inverse Universe completely reimagines the original color for something new.



82, 7.089, 198.980



98, 10.367, 198.832



80, 6.344, 256.726



43, 4.203, 198.992



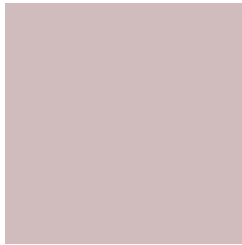
62, 36.702, 196.415



14, 14.035, 196.410

Previews

White Background



This preview shows how the CIELCh color 78, 7.532, 19.943 looks on a white background.

Color Contrast Check

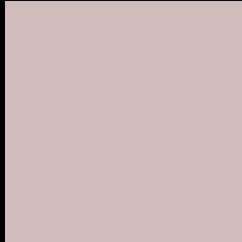
Large Text (above 18pt) WCAG AA × Fail

Any Text WCAG AA × Fail

Large Text (above 18pt) WCAG AAA × Fail

Any Text WCAG AAA × Fail

Black Background



This preview shows how the CIE LCh color 78, 7.532, 19.943 looks on a black background.

Color Contrast Check

Large Text (above 18pt) WCAG AA ✓ Pass

Any Text WCAG AA ✓ Pass

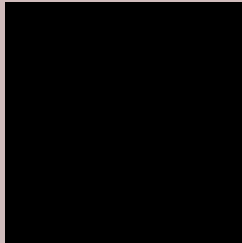
Large Text (above 18pt) WCAG AAA ✓ Pass

Any Text WCAG AAA ✓ Pass

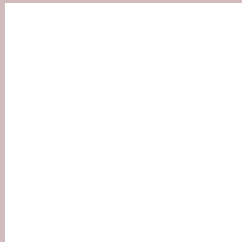
If you want to check with other color combinations, try the [Color Contrast Checker](#).

CIELCh 78, 7.532, 19.943

Background



This preview shows how black text looks on a background with the CIELCh color 78, 7.532, 19.943.



This preview shows how white text looks on a background with the CIELCh color 78, 7.532, 19.943.

Color Blindness Simulation

Color vision deficiency is a very complex topic, and I could not describe the different causes any better than Wikipedia does, so if you want to learn more, you should check out their [article about color blindness](#).

Dichromacy



Original Color

78, 7.532, 19.943

Protanopia

78, 2.130, 49.342

Deuteranopia

78, 9.868, 13.980



Tritanopia
78, 11.968, 338.301

Trichromacy



Original Color
78, 7.532, 19.943

Protanomaly
78, 3.876, 35.516

Deuteranomaly
78, 9.106, 13.386

Tritanomaly
78, 9.499, 349.766

Monochromacy



Original Color
78, 7.532, 19.943

Achromatopsia
78, 0.009, 296.813

Achromatomaly
78, 2.595, 19.405

CSS Examples

Text

The CSS property to change the color of the text to CIELCh 78, 7.532, 19.943 is called "color". The color property can be set on classes, ids or directly on the HTML element.

This example shows how text in the color `rgb(208, 188, 188)` looks like.

```
.text, #text, p{  
    color:rgb(208, 188, 188)  
}
```

If you want to add a text shadow in that color use the text-shadow property, you can generate a text shadow directly with our [CSS Text Shadow Generator](#).

Here you see how black text with a 4 pixel rgb(208, 188, 188) colored shadow looks like.

```
.shadow{ text-shadow: 4px 4px 2px rgb(208, 188, 188) }
```

Border

The CSS property to change the border of an element to CIELCh 78, 7.532, 19.943 is called "border". The border property can be set on classes, ids or directly on the HTML element.

This example shows the color as border, it can be applied via the CSS property "border" or "border-color".

```
.border, #border, table{ border:4px solid rgb(208, 188, 188) }
```

If only the border color should be changed use the property `border-color`.

```
.border{ border-color:rgb(208, 188, 188) }
```

If you want to add a box shadow in that color use:

Here you see how a box with a 4 pixel `rgb(208, 188, 188)` colored shadow looks like.

```
.boxshadow{ -moz-box-shadow:4px 4px 4px  
4px rgb(208, 188, 188); -webkit-box-  
shadow:4px 4px 4px 4px rgb(208, 188, 188);  
box-shadow:4px 4px 4px 4px rgb(208, 188,  
188) }
```

Background

The CSS property to change the background color of an element to CIELCh 78, 7.532, 19.943 is called "background". The background property can be set on classes, ids or directly on the HTML element.

```
.background, #background, body{  
background: rgb(208, 188, 188) }
```

If only the background color should be changed can be used:

```
.background{ background-color: rgb(208,  
188, 188) }
```

This example shows the color as background, it is applied via the CSS property "background".

To optimize and compress your CSS code, you can use our [online CSS compressor and optimizer](#) based on csstidy. If you want to create a linear or radial gradient as background or border, check our [CSS Gradient Generator](#).

Hey! You found this booklet interesting? Support Converting Colors with the new Membership Option!

The pro membership hides all ads, plus gives you double the colors in the color bucket, and more awesome pro features!

[Learn more, Memberships starting at \\$2.50/m!](#)

**Follow me
on Twitter!**

@ConvertingColor