

Converting Colors

CIELCh(78, 8.346, 13.370)

Have a look what the booklet for
CIELCh(78, 8.346, 13.370) contains.

CIELCh(78, 8.338, 12.693)	3
<i>Conversions</i>	4
<i>Details</i>	6
<i>Harmonies</i>	11
<i>Previews</i>	20
<i>Color Blindness Simulation</i>	23
<i>CSS Examples</i>	26

Color

CIELCh(78, 8.338, 12.693)

Conversions

Conversions Part 1

Format	Color
Hex	D2BCBE
RGB	210, 188, 190
RGB Percent	82%, 74%, 75%
CMY	0.1776, 0.2638, 0.2560
CMYK	0.00, 0.10, 0.10, 0.18
HSL	355°, 20%, 78%
HSV	355°, 10%, 82%
XYZ	53.6841, 53.2120, 55.9961
YIQ	194.8060, 12.4700, 5.2860

Conversions

Conversions Part 2

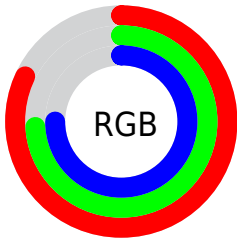
Format	Color
R _Y B	210, 188, 190
Decimal	13810878
CIE Lab	78.00, 8.13, 1.83
CIE LCh	78, 8.338, 12.693
Yxy	53.2120, 0.3296, 0.3267
Android (android.graphics.Color)	4292000958 (0xFFD2BCBE)
YUV	194.8060, -2.3694, 13.3251
Hunter-Lab	72.9466, 3.7083, 5.5497

Details

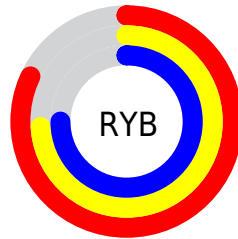
The CIELCh color **78, 8.338, 12.693** is a light color, and the websafe version is hex **CCCCCC**. A complement of this color would be **82, 7.890, 191.182**, and the grayscale version is **79, 0.010, 296.813**.

A 20% lighter version of the original color is **97, 4.037, 4.883**, and **58, 8.087, 12.182** is the 20% darker color. If you saturate the color by 10%, you get **72, 16.832, 13.750**, and if you desaturate by 10%, it is **84, 0.376, 10.459**.

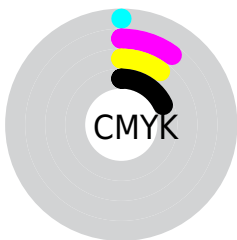
Distribution



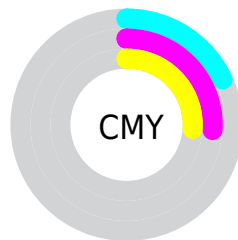
- Red (82%)
- Green (74%)
- Blue (75%)



- Red (82%)
- Yellow (74%)
- Blue (75%)



- Cyan (0%)
- Magenta (10%)
- Yellow (10%)
- Black (18%)



- Cyan (18%)
- Magenta (26%)
- Yellow (26%)

Brightness & Saturation Gradients

These gradients show how the CIELCh color 78, 8.338, 12.693 changes by changing the brightness by 10 percent. The first figure shows a shift by +10% for each color and the second figure -10%.

Similar to the brightness gradients but the following saturation gradients show a change of the CIELCh color 78, 8.338, 12.693 by changing the saturation by 10% instead.

 78, 8.338, 12.693

 78, 8.338, 12.693

 100, 8.338, 12.693

 68, 8.338, 12.693

 98, 8.338, 12.693

 58, 8.338, 12.693

 48, 8.338, 12.693

 38, 8.338, 12.693

 28, 8.338, 12.693

 18, 8.338, 12.693

 8, 8.338, 12.693

 0, 8.338, 12.693

 78, 8.338, 12.693

 78, 8.338, 12.693

72, 16.832, 13.750

84, 0.376, 10.459

67, 25.839, 15.014

90, 7.062, 191.328

62, 35.270, 16.594

96, 14.011,
190.702

57, 44.956, 18.600

97, 15.089,
198.501

53, 54.636, 21.160

49, 63.988, 24.395

46, 72.685, 28.339

45, 80.397, 32.776

44, 86.415, 36.669

Harmonies

Complementary

The Complementary color scheme is a pair of colors which are on the opposite of each other on the color wheel.



78, 8.338, 12.693



82, 7.890, 191.182

Rectangle

The Rectangle color scheme consists of four colors that form a rectangle on the color wheel.



78, 8.338, 12.693



78, 8.338, 62.693



78, 8.338, 192.693



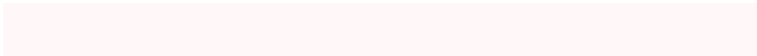
78, 8.338, 242.693

Sweetspot

The Sweet Spot groups the original color and five complimentary colors.



78, 8.336, 12.705



98, 2.727, 11.902



78, 13.833, 322.205



52, 2.073, 12.017



0, 0.000, 0.000



53, 0.007, 296.813

Same Dimension

The Same Dimension uses a secret algorithm to generate beautiful new colors.



78, 8.336, 12.705



91, 12.220, 12.968



80, 6.812, 62.766



41, 4.484, 12.600



35, 72.776, 35.997



4, 20.048, 15.239

Inverse Universe

The Inverse Universe completely reimagines the original color for something new.



78, 8.336, 12.705



91, 12.220, 12.968



80, 6.532, 245.142



41, 4.484, 12.600



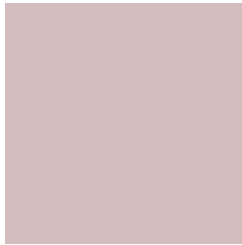
35, 72.776, 35.997



4, 20.048, 15.239

Previews

White Background



This preview shows how the CIELCh color 78, 8.338, 12.693 looks on a white background.

Color Contrast Check

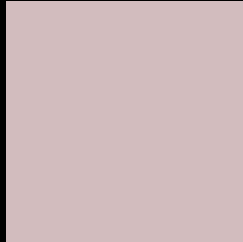
Large Text (above 18pt) WCAG AA × Fail

Any Text WCAG AA × Fail

Large Text (above 18pt) WCAG AAA × Fail

Any Text WCAG AAA × Fail

Black Background



This preview shows how the CIELCh color 78, 8.338, 12.693 looks on a black background.

Color Contrast Check

Large Text (above 18pt) WCAG AA ✓ Pass

Any Text WCAG AA ✓ Pass

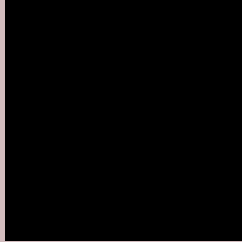
Large Text (above 18pt) WCAG AAA ✓ Pass

Any Text WCAG AAA ✓ Pass

If you want to check with other color combinations, try the [Color Contrast Checker](#).

CIELCh 78, 8.338, 12.693

Background



This preview shows how black text looks on a background with the CIELCh color 78, 8.338, 12.693.



This preview shows how white text looks on a background with the CIELCh color 78, 8.338, 12.693.

Color Blindness Simulation

Color vision deficiency is a very complex topic, and I could not describe the different causes any better than Wikipedia does, so if you want to learn more, you should check out their [article about color blindness](#).

Dichromacy



Original Color

78, 8.338, 12.693

Protanopia

78, 1.479, 19.161

Deuteranopia

78, 9.922, 10.922



Tritanopia
78, 12.244, 339.504

Trichromacy



Original Color
78, 8.338, 12.693

Protanomaly
78, 4.133, 12.193

Deuteranomaly
78, 9.545, 10.515

Tritanomaly
78, 10.405, 349.388

Monochromacy



Original Color
78, 8.338, 12.693

Achromatopsia
79, 0.010, 296.813

Achromatomaly
78, 3.017, 9.286

CSS Examples

Text

The CSS property to change the color of the text to CIELCh 78, 8.338, 12.693 is called "color". The color property can be set on classes, ids or directly on the HTML element.

This example shows how text in the color `rgb(210, 188, 190)` looks like.

```
.text, #text, p{  
    color:rgb(210, 188, 190)  
}
```

If you want to add a text shadow in that color use the text-shadow property, you can generate a text shadow directly with our [CSS Text Shadow Generator](#).

Here you see how black text with a 4 pixel rgb(210, 188, 190) colored shadow looks like.

```
.shadow{ text-shadow: 4px 4px 2px rgb(210, 188, 190) }
```

Border

The CSS property to change the border of an element to CIELCh 78, 8.338, 12.693 is called "border". The border property can be set on classes, ids or directly on the HTML element.

This example shows the color as border, it can be applied via the CSS property "border" or "border-color".

```
.border, #border, table{ border:4px solid rgb(210, 188, 190) }
```

If only the border color should be changed use the property `border-color`.

```
.border{ border-color:rgb(210, 188, 190) }
```

If you want to add a box shadow in that color use:

Here you see how a box with a 4 pixel `rgb(210, 188, 190)` colored shadow looks like.

```
.boxshadow{ -moz-box-shadow:4px 4px 4px  
4px rgb(210, 188, 190); -webkit-box-  
shadow:4px 4px 4px 4px rgb(210, 188, 190);  
box-shadow:4px 4px 4px 4px rgb(210, 188,  
190) }
```

Background

The CSS property to change the background color of an element to CIELCh 78, 8.338, 12.693 is called "background". The background property can be set on classes, ids or directly on the HTML element.

```
.background, #background, body{  
background: rgb(210, 188, 190) }
```

If only the background color should be changed can be used:

```
.background{ background-color: rgb(210,  
188, 190) }
```

This example shows the color as background, it is applied via the CSS property "background".

To optimize and compress your CSS code, you can use our [online CSS compressor and optimizer](#) based on csstidy. If you want to create a linear or radial gradient as background or border, check our [CSS Gradient Generator](#).

Hey! You found this booklet interesting? Support Converting Colors with the new Membership Option!

The pro membership hides all ads, plus gives you double the colors in the color bucket, and more awesome pro features!

[Learn more, Memberships starting at \\$2.50/m!](#)

**Follow me
on Twitter!**

@ConvertingColor