

Converting Colors

CIELCh(78, 8.351, 53.357)

Have a look what the booklet for
CIELCh(78, 8.351, 53.357) contains.

| | |
|--|----|
| CIELCh(78, 8.416, 50.228) | 3 |
| <i>Conversions</i> | 4 |
| <i>Details</i> | 6 |
| <i>Harmonies</i> | 11 |
| <i>Previews</i> | 20 |
| <i>Color Blindness Simulation</i> | 23 |
| <i>CSS Examples</i> | 26 |

Color

CIELCh(78, 8.416, 50.228)

Conversions

Conversions Part 1

| Format | Color |
|-------------|---------------------------|
| Hex | D0BDB5 |
| RGB | 208, 189, 181 |
| RGB Percent | 82%, 74%, 71% |
| CMY | 0.1839, 0.2584, 0.2897 |
| CMYK | 0.00, 0.09, 0.13, 0.18 |
| HSL | 18°, 22%, 76% |
| HSV | 18°, 13%, 82% |
| XYZ | 52.6195, 53.2120, 51.2747 |
| YIQ | 193.7690, 13.8920, 1.5400 |

Conversions

Conversions Part 2

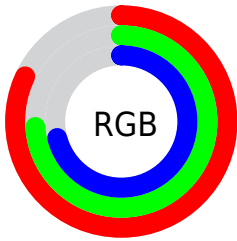
| Format | Color |
|-------------------------------------|-------------------------------|
| R _Y B | 208, 192, 181 |
| Decimal | 13680053 |
| CIE Lab | 78.00, 5.38, 6.47 |
| CIE LCh | 78, 8.416, 50.228 |
| Yxy | 53.2120, 0.3349, 0.3387 |
| Android (android.graphics.Color) | 4291870133 (0xFFD0BDB5) |
| YUV | 193.7690, -6.2951, 12.4806 |
| Hunter-Lab | 72.9466, 1.1033, 9.3872 |

Details

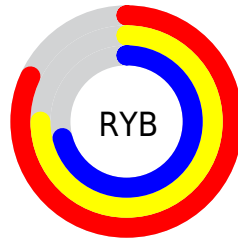
The CIELCh color $78, 8.416, 50.228$ is a light color, and the websafe version is hex `CCCCCC`. A complement of this color would be $79, 7.831, 232.179$, and the grayscale version is $78, 0.009, 296.813$.

A 20% lighter version of the original color is $97, 5.409, 68.280$, and $58, 8.312, 52.844$ is the 20% darker color. If you saturate the color by 10%, you get $74, 15.485, 49.717$, and if you desaturate by 10%, it is $82, 1.856, 50.644$.

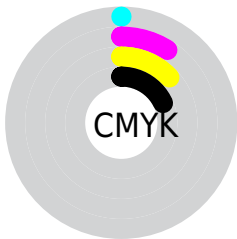
Distribution



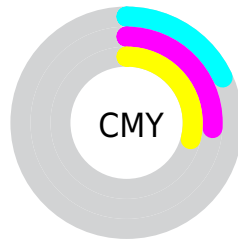
- Red (82%)
- Green (74%)
- Blue (71%)



- Red (82%)
- Yellow (75%)
- Blue (71%)



- Cyan (0%)
- Magenta (9%)
- Yellow (13%)
- Black (18%)



- Cyan (18%)
- Magenta (26%)
- Yellow (29%)

Brightness & Saturation Gradients

These gradients show how the CIELCh color 78, 8.416, 50.228 changes by changing the brightness by 10 percent. The first figure shows a shift by +10% for each color and the second figure -10%.

Similar to the brightness gradients but the following saturation gradients show a change of the CIELCh color 78, 8.416, 50.228 by changing the saturation by 10% instead.

 78, 8.416, 50.228  78, 8.416, 50.228

 100, 8.416, 50.228  68, 8.416, 50.228

 98, 8.416, 50.228  58, 8.416, 50.228

 48, 8.416, 50.228

 38, 8.416, 50.228

 28, 8.416, 50.228

 18, 8.416, 50.228

 8, 8.416, 50.228

 0, 8.416, 50.228

 78, 8.416, 50.228  78, 8.416, 50.228

74, 15.485, 49.717

82, 1.856, 50.644

70, 23.111, 49.256

87, 4.244, 231.710

66, 31.323, 48.897

91, 9.937, 232.328

62, 40.119, 48.658

95, 13.573,
214.791

58, 49.431, 48.540

97, 15.590,
198.468

55, 59.059, 48.493

52, 68.518, 48.353

50, 76.775, 47.718

48, 81.516, 46.994

Harmonies

Complementary

The Complementary color scheme is a pair of colors which are on the opposite of each other on the color wheel.



78, 8.416, 50.228



79, 7.831, 232.179

Rectangle

The Rectangle color scheme consists of four colors that form a rectangle on the color wheel.



78, 8.416, 50.228



78, 8.416, 100.228



78, 8.416, 230.228



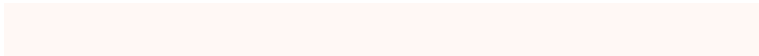
78, 8.416, 280.228

Sweetspot

The Sweet Spot groups the original color and five complimentary colors.



78, 8.416, 50.245



98, 2.957, 50.651



77, 14.409, 334.475



52, 2.108, 50.636



0, 0.000, 0.000



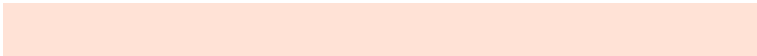
53, 0.007, 296.813

Same Dimension

The Same Dimension uses a secret algorithm to generate beautiful new colors.



78, 8.416, 50.245



92, 12.389, 50.071



81, 11.385, 97.875



42, 3.645, 50.435



39, 69.216, 47.487



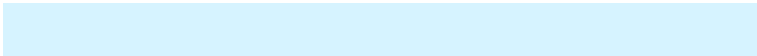
7, 16.889, 37.024

Inverse Universe

The Inverse Universe completely reimagines the original color for something new.



79, 7.831, 232.179



94, 11.304, 232.466



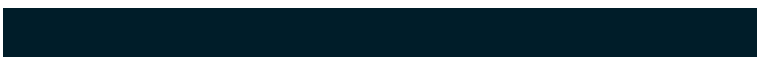
76, 11.533, 281.010



42, 3.465, 231.897



47, 35.560, 255.064



9, 12.648, 243.611

Previews

White Background



This preview shows how the CIELCh color 78, 8.416, 50.228 looks on a white background.

Color Contrast Check

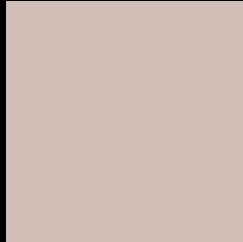
Large Text (above 18pt) WCAG AA × Fail

Any Text WCAG AA × Fail

Large Text (above 18pt) WCAG AAA × Fail

Any Text WCAG AAA × Fail

Black Background



This preview shows how the CIELCh color 78, 8.416, 50.228 looks on a black background.

Color Contrast Check

Large Text (above 18pt) WCAG AA ✓ Pass

Any Text WCAG AA ✓ Pass

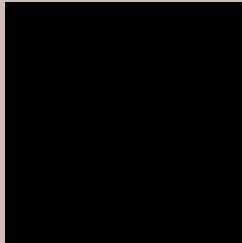
Large Text (above 18pt) WCAG AAA ✓ Pass

Any Text WCAG AAA ✓ Pass

If you want to check with other color combinations, try the [Color Contrast Checker](#).

CIELCh 78, 8.416, 50.228

Background



This preview shows how black text looks on a background with the CIELCh color 78, 8.416, 50.228.



This preview shows how white text looks on a background with the CIELCh color 78, 8.416, 50.228.

Color Blindness Simulation

Color vision deficiency is a very complex topic, and I could not describe the different causes any better than Wikipedia does, so if you want to learn more, you should check out their [article about color blindness](#).

Dichromacy



Original Color

78, 8.416, 50.228

Protanopia

78, 5.463, 80.806

Deuteranopia

78, 11.705, 30.718



Tritanopia
78, 12.244, 339.504

Trichromacy



Original Color
78, 8.416, 50.228

Protanomaly
78, 6.345, 68.630

Deuteranomaly
78, 10.303, 35.062

Tritanomaly
78, 9.369, 356.658

Monochromacy



Original Color
78, 8.416, 50.228

Achromatopsia
78, 0.009, 296.813

Achromatomaly
78, 3.047, 51.065

CSS Examples

Text

The CSS property to change the color of the text to CIELCh 78, 8.416, 50.228 is called "color". The color property can be set on classes, ids or directly on the HTML element.

This example shows how text in the color `rgb(208, 189, 181)` looks like.

```
.text, #text, p{  
    color:rgb(208, 189, 181)  
}
```

If you want to add a text shadow in that color use the text-shadow property, you can generate a text shadow directly with our [CSS Text Shadow Generator](#).

Here you see how black text with a 4 pixel rgb(208, 189, 181) colored shadow looks like.

```
.shadow{ text-shadow: 4px 4px 2px rgb(208, 189, 181) }
```

Border

The CSS property to change the border of an element to CIELCh 78, 8.416, 50.228 is called "border". The border property can be set on classes, ids or directly on the HTML element.

This example shows the color as border, it can be applied via the CSS property "border" or "border-color".

```
.border, #border, table{ border:4px solid rgb(208, 189, 181) }
```

If only the border color should be changed use the property border-color.

```
.border{ border-color:rgb(208, 189, 181) }
```

If you want to add a box shadow in that color use:

Here you see how a box with a 4 pixel rgb(208, 189, 181) colored shadow looks like.

```
.boxshadow{ -moz-box-shadow:4px 4px 4px  
4px rgb(208, 189, 181); -webkit-box-  
shadow:4px 4px 4px 4px rgb(208, 189, 181);  
box-shadow:4px 4px 4px 4px rgb(208, 189,  
181) }
```

Background

The CSS property to change the background color of an element to CIELCh 78, 8.416, 50.228 is called "background". The background property can be set on classes, ids or directly on the HTML element.

```
.background, #background, body{  
background: rgb(208, 189, 181) }
```

If only the background color should be changed can be used:

```
.background{ background-color: rgb(208,  
189, 181) }
```

This example shows the color as background, it is applied via the CSS property "background".

To optimize and compress your CSS code, you can use our [online CSS compressor and optimizer](#) based on csstidy. If you want to create a linear or radial gradient as background or border, check our [CSS Gradient Generator](#).

Hey! You found this booklet interesting? Support Converting Colors with the new Membership Option!

The pro membership hides all ads, plus gives you double the colors in the color bucket, and more awesome pro features!

[Learn more, Memberships starting at \\$2.50/m!](#)

**Follow me
on Twitter!**

@ConvertingColor