

Converting Colors

CIELCh(78, 8.996, 42.865)

Have a look what the booklet for
CIELCh(78, 8.996, 42.865) contains.

CIELCh(78, 8.988, 40.767)	3
<i>Conversions</i>	4
<i>Details</i>	6
<i>Harmonies</i>	11
<i>Previews</i>	20
<i>Color Blindness Simulation</i>	23
<i>CSS Examples</i>	26

Color

CIELCh(78, 8.988, 40.767)

Conversions

Conversions Part 1

Format	Color
Hex	D2BCB6
RGB	210, 188, 182
RGB Percent	82%, 74%, 71%
CMY	0.1754, 0.2617, 0.2852
CMYK	0.00, 0.10, 0.13, 0.18
HSL	13°, 24%, 77%
HSV	13°, 13%, 82%
XYZ	53.1687, 53.2120, 51.8696
YIQ	193.8940, 15.0380, 2.7980

Conversions

Conversions Part 2

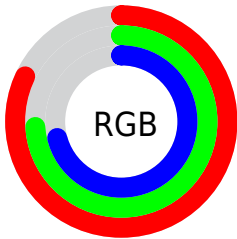
Format	Color
R _Y B	210, 190, 182
Decimal	13810870
CIE Lab	78.00, 6.81, 5.87
CIE LCh	78, 8.988, 40.767
Yxy	53.2120, 0.3360, 0.3363
Android (android.graphics.Color)	4292000950 (0xFFD2BCB6)
YUV	193.8940, -5.8637, 14.1250
Hunter-Lab	72.9466, 2.4471, 8.9037

Details

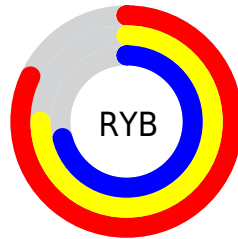
The CIELCh color $78, 8.988, 40.767$ is a light color, and the websafe version is hex `CCCCCC`. A complement of this color would be $81, 8.266, 221.740$, and the grayscale version is $79, 0.010, 296.813$.

A 20% lighter version of the original color is $97, 4.969, 57.434$, and $58, 8.869, 42.552$ is the 20% darker color. If you saturate the color by 10%, you get $73, 16.397, 40.684$, and if you desaturate by 10%, it is $83, 2.150, 40.812$.

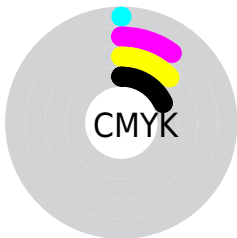
Distribution



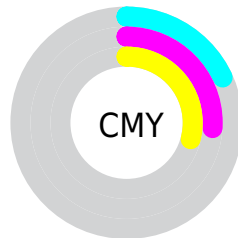
- Red (82%)
- Green (74%)
- Blue (71%)



- Red (82%)
- Yellow (75%)
- Blue (71%)



- Cyan (0%)
- Magenta (10%)
- Yellow (13%)
- Black (18%)



- Cyan (18%)
- Magenta (26%)
- Yellow (29%)

Brightness & Saturation Gradients

These gradients show how the CIELCh color 78, 8.988, 40.767 changes by changing the brightness by 10 percent. The first figure shows a shift by +10% for each color and the second figure -10%.

Similar to the brightness gradients but the following saturation gradients show a change of the CIELCh color 78, 8.988, 40.767 by changing the saturation by 10% instead.

 78, 8.988, 40.767

 78, 8.988, 40.767

 100, 8.988, 40.767

 68, 8.988, 40.767

 98, 8.988, 40.767

 58, 8.988, 40.767

 48, 8.988, 40.767

 38, 8.988, 40.767

 28, 8.988, 40.767

 18, 8.988, 40.767

 8, 8.988, 40.767

 0, 8.988, 40.767

 78, 8.988, 40.767

 78, 8.988, 40.767

73, 16.397, 40.684

83, 2.150, 40.812

69, 24.425, 40.703

87, 4.169, 221.511

65, 33.094, 40.884

92, 10.025,
221.790

60, 42.390, 41.264

97, 14.689,
199.833

57, 52.224, 41.860

53, 62.373, 42.638

97, 14.912,
198.512

50, 72.320, 43.429

48, 80.922, 43.766

46, 85.524, 43.742

Harmonies

Complementary

The Complementary color scheme is a pair of colors which are on the opposite of each other on the color wheel.



78, 8.988, 40.767



81, 8.266, 221.740

Rectangle

The Rectangle color scheme consists of four colors that form a rectangle on the color wheel.



78, 8.988, 40.767



78, 8.988, 90.767



78, 8.988, 220.767



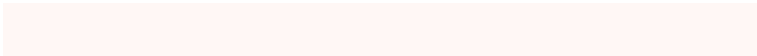
78, 8.988, 270.767

Sweetspot

The Sweet Spot groups the original color and five complimentary colors.



78, 8.987, 40.782



98, 3.039, 40.840



77, 15.828, 331.341



52, 2.166, 40.855



0, 0.000, 0.000



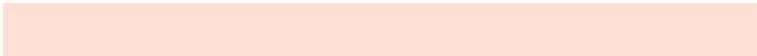
53, 0.007, 296.813

Same Dimension

The Same Dimension uses a secret algorithm to generate beautiful new colors.



78, 8.987, 40.782



91, 12.774, 40.746



81, 10.832, 92.047



42, 3.751, 40.834



37, 72.074, 44.144



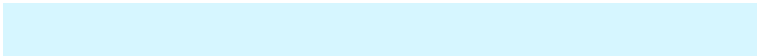
6, 17.635, 31.355

Inverse Universe

The Inverse Universe completely reimagines the original color for something new.



81, 8.266, 221.740



95, 11.520, 221.875



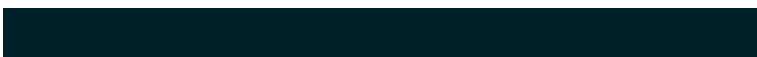
77, 10.864, 275.477



43, 3.541, 221.589



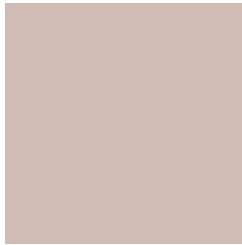
51, 32.428, 238.381



11, 12.202, 229.374

Previews

White Background



This preview shows how the CIELCh color 78, 8.988, 40.767 looks on a white background.

Color Contrast Check

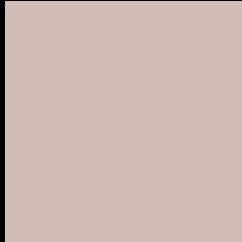
Large Text (above 18pt) WCAG AA × Fail

Any Text WCAG AA × Fail

Large Text (above 18pt) WCAG AAA × Fail

Any Text WCAG AAA × Fail

Black Background



This preview shows how the CIELCh color 78, 8.988, 40.767 looks on a black background.

Color Contrast Check

Large Text (above 18pt) WCAG AA ✓ Pass

Any Text WCAG AA ✓ Pass

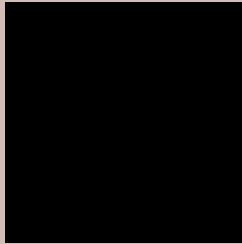
Large Text (above 18pt) WCAG AAA ✓ Pass

Any Text WCAG AAA ✓ Pass

If you want to check with other color combinations, try the [Color Contrast Checker](#).

CIELCh 78, 8.988, 40.767

Background



This preview shows how black text looks on a background with the CIELCh color 78, 8.988, 40.767.



This preview shows how white text looks on a background with the CIELCh color 78, 8.988, 40.767.

Color Blindness Simulation

Color vision deficiency is a very complex topic, and I could not describe the different causes any better than Wikipedia does, so if you want to learn more, you should check out their [article about color blindness](#).

Dichromacy



Original Color

78, 8.988, 40.767

Protanopia

78, 4.812, 81.789

Deuteranopia

78, 11.207, 28.413



Tritanopia
78, 12.494, 343.690

Trichromacy



Original Color
78, 8.988, 40.767

Protanomaly
78, 5.947, 65.345

Deuteranomaly
78, 10.157, 32.206

Tritanomaly
78, 10.066, 358.455

Monochromacy



Original Color
78, 8.988, 40.767

Achromatopsia
78, 0.009, 296.813

Achromatomaly
78, 3.155, 39.205

CSS Examples

Text

The CSS property to change the color of the text to CIELCh 78, 8.988, 40.767 is called "color". The color property can be set on classes, ids or directly on the HTML element.

This example shows how text in the color `rgb(210, 188, 182)` looks like.

```
.text, #text, p{  
    color:rgb(210, 188, 182)  
}
```

If you want to add a text shadow in that color use the text-shadow property, you can generate a text shadow directly with our [CSS Text Shadow Generator](#).

Here you see how black text with a 4 pixel rgb(210, 188, 182) colored shadow looks like.

```
.shadow{ text-shadow: 4px 4px 2px rgb(210, 188, 182) }
```

Border

The CSS property to change the border of an element to CIELCh 78, 8.988, 40.767 is called "border". The border property can be set on classes, ids or directly on the HTML element.

This example shows the color as border, it can be applied via the CSS property "border" or "border-color".

```
.border, #border, table{ border:4px solid rgb(210, 188, 182) }
```

If only the border color should be changed use the property `border-color`.

```
.border{ border-color:rgb(210, 188, 182) }
```

If you want to add a box shadow in that color use:

Here you see how a box with a 4 pixel `rgb(210, 188, 182)` colored shadow looks like.

```
.boxshadow{ -moz-box-shadow:4px 4px 4px 4px rgb(210, 188, 182); -webkit-box-shadow:4px 4px 4px 4px rgb(210, 188, 182); box-shadow:4px 4px 4px 4px rgb(210, 188, 182) }
```

Background

The CSS property to change the background color of an element to CIELCh 78, 8.988, 40.767 is called "background". The background property can be set on classes, ids or directly on the HTML element.

```
.background, #background, body{  
background: rgb(210, 188, 182) }
```

If only the background color should be changed can be used:

```
.background{ background-color: rgb(210,  
188, 182) }
```

This example shows the color as background, it is applied via the CSS property "background".

To optimize and compress your CSS code, you can use our [online CSS compressor and optimizer](#) based on csstidy. If you want to create a linear or radial gradient as background or border, check our [CSS Gradient Generator](#).

Hey! You found this booklet interesting? Support Converting Colors with the new Membership Option!

The pro membership hides all ads, plus gives you double the colors in the color bucket, and more awesome pro features!

[Learn more, Memberships starting at \\$2.50/m!](#)

**Follow me
on Twitter!**

@ConvertingColor