

Converting Colors

CIE LCh(78, 9.142, 337.270)

Have a look what the booklet for
CIELCh(78, 9.142, 337.270) contains.

CIELCh(78, 9.258, 336.241)	3
<i>Conversions</i>	4
<i>Details</i>	6
<i>Harmonies</i>	12
<i>Previews</i>	21
<i>Color Blindness Simulation</i>	24
<i>CSS Examples</i>	27

Color

CIELCh(78, 9.258, 336.241)

Conversions

Conversions Part 1

Format	Color
Hex	CEBCC8
RGB	206, 188, 200
RGB Percent	81%, 74%, 78%
CMY	0.1924, 0.2630, 0.2160
CMYK	0.00, 0.09, 0.03, 0.19
HSL	320°, 15%, 77%
HSV	320°, 9%, 81%
XYZ	53.8163, 53.2120, 62.0319
YIQ	194.7500, 6.8760, 7.5480

Conversions

Conversions Part 2

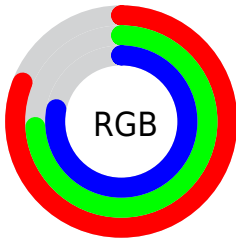
Format	Color
R _Y B	206, 188, 200
Decimal	13548744
CIE Lab	78.00, 8.47, -3.73
CIE LCh	78, 9.258, 336.241
Yxy	53.2120, 0.3183, 0.3148
Android (android.graphics.Color)	4291738824 (0xFFCEBCC8)
YUV	194.7500, 2.5882, 9.8663
Hunter-Lab	72.9466, 4.0320, 0.6439

Details

The CIELCh color $78, 9.258, 336.241$ is a light color, and the websafe version is hex `CCCCCC`. A complement of this color would be $81, 9.202, 155.079$, and the grayscale version is $79, 0.010, 296.813$.

A 20% lighter version of the original color is $97, 6.851, 324.635$, and $58, 9.138, 337.266$ is the 20% darker color. If you saturate the color by 10%, you get $73, 19.985, 337.011$, and if you desaturate by 10%, it is $83, 1.313, 155.857$.

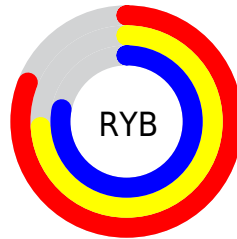
Distribution



Red (81%)

Green (74%)

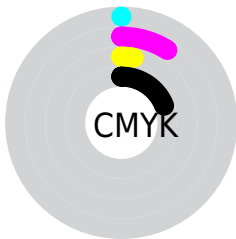
Blue (78%)



Red (81%)

Yellow (74%)

Blue (78%)

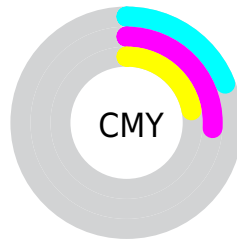


Cyan (0%)

Magenta (9%)

Yellow (3%)

Black (19%)



Cyan (19%)

Magenta (26%)

Yellow (22%)


Brightness & Saturation Gradients

These gradients show how the CIELCh color 78, 9.258, 336.241 changes by changing the brightness by 10 percent. The first figure shows a shift by +10% for each color and the second figure -10%.

Similar to the brightness gradients but the following saturation gradients show a change of the CIELCh color 78, 9.258, 336.241 by changing the saturation by 10% instead.

 78, 9.258, 336.241

 78, 9.258, 336.241

 100, 9.258,
336.241

 68, 9.258, 336.241

 98, 9.258, 336.241

 58, 9.258, 336.241

 48, 9.258, 336.241

 38, 9.258, 336.241

 28, 9.258, 336.241

 18, 9.258, 336.241

 8, 9.258, 336.241

 0, 9.258, 336.241

 78, 9.258, 336.241

 78, 9.258, 336.241

73, 19.985,
337.011

83, 1.313, 155.857

68, 30.724,
337.820

89, 11.631,
154.962

63, 41.239,
338.694

95, 21.654,
154.335

58, 51.193,
339.652

96, 22.343,
158.811

54, 60.142,
340.726

96, 20.119,
166.266

51, 67.567,
341.959

96, 18.281,
175.341

48, 72.962,
343.418

97, 16.958,
186.088

47, 75.990,
345.186

97, 16.282,
198.152

46, 76.822,

97, 16.275,
198.424

Harmonies

Complementary

The Complementary color scheme is a pair of colors which are on the opposite of each other on the color wheel.



78, 9.258, 336.241



81, 9.202, 155.079

Rectangle

The Rectangle color scheme consists of four colors that form a rectangle on the color wheel.



78, 9.258, 336.241



78, 9.258, 26.241



78, 9.258, 156.241



78, 9.258, 206.241

Sweetspot

The Sweet Spot groups the original color and five complimentary colors.



78, 9.256, 336.244



98, 3.763, 335.768



77, 9.941, 303.529



52, 2.854, 335.848



0, 0.000, 0.000



53, 0.007, 296.813

Same Dimension

The Same Dimension uses a secret algorithm to generate beautiful new colors.



78, 9.256, 336.244



94, 12.612, 336.349



78, 6.924, 6.542



40, 5.965, 336.293



36, 65.618, 347.212



4, 22.152, 342.818

Inverse Universe

The Inverse Universe completely reimagines the original color for something new.



78, 9.256, 336.244



94, 12.612, 336.349



81, 6.667, 185.156



40, 5.965, 336.293



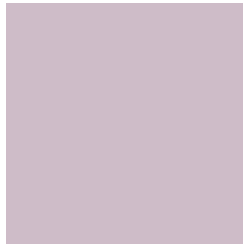
36, 65.618, 347.212



4, 22.152, 342.818

Previews

White Background



This preview shows how the CIELCh color 78, 9.258, 336.241 looks on a white background.

Color Contrast Check

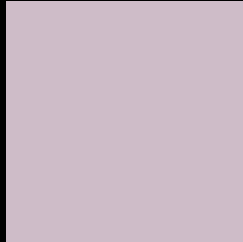
Large Text (above 18pt) WCAG AA × Fail

Any Text WCAG AA × Fail

Large Text (above 18pt) WCAG AAA × Fail

Any Text WCAG AAA × Fail

Black Background



This preview shows how the CIE LCh color 78, 9.258, 336.241 looks on a black background.

Color Contrast Check

Large Text (above 18pt) WCAG AA ✓ Pass

Any Text WCAG AA ✓ Pass

Large Text (above 18pt) WCAG AAA ✓ Pass

Any Text WCAG AAA ✓ Pass

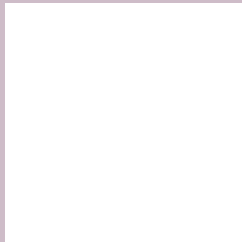
If you want to check with other color combinations, try the [Color Contrast Checker](#).

CIELCh 78, 9.258, 336.241

Background



This preview shows how black text looks on a background with the CIELCh color 78, 9.258, 336.241.



This preview shows how white text looks on a background with the CIELCh color 78, 9.258, 336.241.

Color Blindness Simulation

Color vision deficiency is a very complex topic, and I could not describe the different causes any better than Wikipedia does, so if you want to learn more, you should check out their [article about color blindness](#).

Dichromacy



Original Color

78, 9.258, 336.241

Protanopia

78, 5.420, 298.331

Deuteranopia

78, 10.435, 338.468



Tritanopia
78, 10.023, 331.837

Trichromacy



Original Color
78, 9.258, 336.241

Protanomaly
78, 5.965, 315.909

Deuteranomaly
78, 10.163, 337.037

Tritanomaly
78, 9.633, 333.949

Monochromacy



Original Color
78, 9.258, 336.241

Achromatopsia
79, 0.010, 296.813

Achromatomaly
78, 3.735, 333.859

CSS Examples

Text

The CSS property to change the color of the text to CIELCh 78, 9.258, 336.241 is called "color". The color property can be set on classes, ids or directly on the HTML element.

This example shows how text in the color `rgb(206, 188, 200)` looks like.

```
.text, #text, p{  
    color:rgb(206, 188, 200)  
}
```

If you want to add a text shadow in that color use the text-shadow property, you can generate a text shadow directly with our [CSS Text Shadow Generator](#).

Here you see how black text with a 4 pixel rgb(206, 188, 200) colored shadow looks like.

```
.shadow{ text-shadow: 4px 4px 2px rgb(206, 188, 200) }
```

Border

The CSS property to change the border of an element to CIELCh 78, 9.258, 336.241 is called "border". The border property can be set on classes, ids or directly on the HTML element.

This example shows the color as border, it can be applied via the CSS property "border" or "border-color".

```
.border, #border, table{ border:4px solid rgb(206, 188, 200) }
```

If only the border color should be changed use the property `border-color`.

```
.border{ border-color:rgb(206, 188, 200) }
```

If you want to add a box shadow in that color use:

Here you see how a box with a 4 pixel `rgb(206, 188, 200)` colored shadow looks like.

```
.boxshadow{ -moz-box-shadow:4px 4px 4px  
4px rgb(206, 188, 200); -webkit-box-  
shadow:4px 4px 4px 4px rgb(206, 188, 200);  
box-shadow:4px 4px 4px 4px rgb(206, 188,  
200) }
```

Background

The CSS property to change the background color of an element to CIELCh 78, 9.258, 336.241 is called "background". The background property can be set on classes, ids or directly on the HTML element.

```
.background, #background, body{  
background: rgb(206, 188, 200) }
```

If only the background color should be changed can be used:

```
.background{ background-color: rgb(206,  
188, 200) }
```

This example shows the color as background, it is applied via the CSS property "background".

To optimize and compress your CSS code, you can use our [online CSS compressor and optimizer](#) based on csstidy. If you want to create a linear or radial gradient as background or border, check our [CSS Gradient Generator](#).

Hey! You found this booklet interesting? Support Converting Colors with the new Membership Option!

The pro membership hides all ads, plus gives you double the colors in the color bucket, and more awesome pro features!

[Learn more, Memberships starting at \\$2.50/m!](#)

**Follow me
on Twitter!**

@ConvertingColor