

Converting Colors

CIELCh(78, 9.622, 19.871)

Have a look what the booklet for
CIELCh(78, 9.622, 19.871) contains.

CIELCh(78, 9.462, 20.118)	3
<i>Conversions</i>	4
<i>Details</i>	6
<i>Harmonies</i>	11
<i>Previews</i>	20
<i>Color Blindness Simulation</i>	23
<i>CSS Examples</i>	26

Color

CIELCh(78, 9.462, 20.118)

Conversions

Conversions Part 1

Format	Color
Hex	D4BBBB
RGB	212, 187, 187
RGB Percent	83%, 73%, 73%
CMY	0.1681, 0.2661, 0.2661
CMYK	0.00, 0.12, 0.12, 0.17
HSL	0°, 23%, 78%
HSV	0°, 12%, 83%
XYZ	53.9770, 53.2120, 54.5180
YIQ	194.4750, 14.9000, 5.3000

Conversions

Conversions Part 2

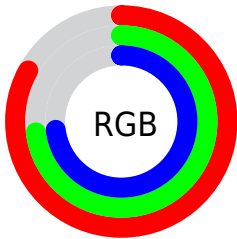
Format	Color
R _Y B	212, 187, 187
Decimal	13941691
CIE Lab	78.00, 8.88, 3.25
CIE LCh	78, 9.462, 20.118
Yxy	53.2120, 0.3338, 0.3291
Android (android.graphics.Color)	4292131771 (0xFFD4BBBB)
YUV	194.4750, -3.6852, 15.3694
Hunter-Lab	72.9466, 4.4252, 6.7510

Details

The CIELCh color $78, 9.462, 20.118$ is a light color, and the websafe version is hex `CCCCCC`. A complement of this color would be $83, 8.778, 198.848$, and the grayscale version is $79, 0.010, 296.813$.

A 20% lighter version of the original color is $97, 4.267, 19.539$, and $58, 9.297, 20.327$ is the 20% darker color. If you saturate the color by 10%, you get $72, 18.187, 21.017$, and if you desaturate by 10%, it is $84, 1.379, 19.109$.

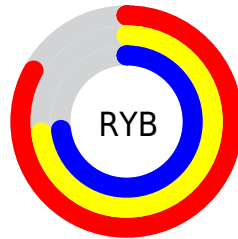
Distribution



Red (83%)

Green (73%)

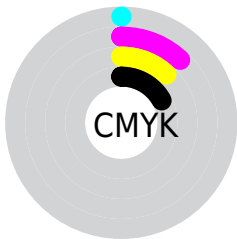
Blue (73%)



Red (83%)

Yellow (73%)

Blue (73%)

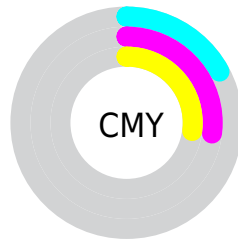


Cyan (0%)

Magenta (12%)

Yellow (12%)

Black (17%)



Cyan (17%)


Magenta (27%)

Yellow (27%)


Brightness & Saturation Gradients

These gradients show how the CIELCh color 78, 9.462, 20.118 changes by changing the brightness by 10 percent. The first figure shows a shift by +10% for each color and the second figure -10%.

Similar to the brightness gradients but the following saturation gradients show a change of the CIELCh color 78, 9.462, 20.118 by changing the saturation by 10% instead.

 78, 9.462, 20.118  78, 9.462, 20.118

 100, 9.462, 20.118  68, 9.462, 20.118

 98, 9.462, 20.118  58, 9.462, 20.118

 48, 9.462, 20.118

 38, 9.462, 20.118

 28, 9.462, 20.118

 18, 9.462, 20.118

 8, 9.462, 20.118

 0, 9.462, 20.118

 78, 9.462, 20.118  78, 9.462, 20.118

72, 18.187, 21.017

84, 1.379, 19.109

67, 27.557, 22.144

90, 6.092, 199.102

61, 37.508, 23.612

96, 13.006,
198.640

57, 47.891, 25.528

97, 14.321,
198.551

52, 58.456, 28.000

49, 68.846, 31.080

46, 78.539, 34.616

45, 86.491, 37.964

44, 91.019, 40.002

Harmonies

Complementary

The Complementary color scheme is a pair of colors which are on the opposite of each other on the color wheel.



78, 9.462, 20.118



83, 8.778, 198.848

Rectangle

The Rectangle color scheme consists of four colors that form a rectangle on the color wheel.



78, 9.462, 20.118



78, 9.462, 70.118



78, 9.462, 200.118



78, 9.462, 250.118

Sweetspot

The Sweet Spot groups the original color and five complimentary colors.



78, 9.460, 20.130



97, 3.616, 19.479



79, 16.189, 325.070



51, 2.577, 19.556



0, 0.000, 0.000



53, 0.007, 296.813

Same Dimension

The Same Dimension uses a secret algorithm to generate beautiful new colors.



78, 9.460, 20.130



90, 13.169, 20.324



81, 8.122, 73.937



42, 4.549, 19.942



35, 77.347, 39.901



5, 21.998, 19.775

Inverse Universe

The Inverse Universe completely reimagines the original color for something new.



83, 8.778, 198.848



98, 12.027, 198.716



80, 7.891, 257.030



44, 4.287, 198.987



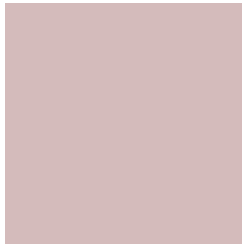
63, 37.114, 196.411



15, 14.556, 196.406

Previews

White Background



This preview shows how the CIELCh color 78, 9.462, 20.118 looks on a white background.

Color Contrast Check

Large Text (above 18pt) WCAG AA × Fail

Any Text WCAG AA × Fail

Large Text (above 18pt) WCAG AAA × Fail

Any Text WCAG AAA × Fail

Black Background



This preview shows how the CIE LCh color 78, 9.462, 20.118 looks on a black background.

Color Contrast Check

Large Text (above 18pt) WCAG AA ✓ Pass

Any Text WCAG AA ✓ Pass

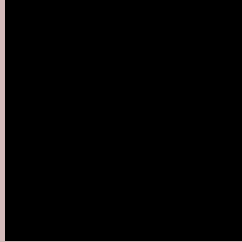
Large Text (above 18pt) WCAG AAA ✓ Pass

Any Text WCAG AAA ✓ Pass

If you want to check with other color combinations, try the [Color Contrast Checker](#).

CIELCh 78, 9.462, 20.118

Background



This preview shows how black text looks on a background with the CIELCh color 78, 9.462, 20.118.



This preview shows how white text looks on a background with the CIELCh color 78, 9.462, 20.118.

Color Blindness Simulation

Color vision deficiency is a very complex topic, and I could not describe the different causes any better than Wikipedia does, so if you want to learn more, you should check out their [article about color blindness](#).

Dichromacy



Original Color


78, 9.462, 20.118

Protanopia

78, 2.130, 49.342

Deuteranopia

78, 10.235, 20.185



Tritanopia
78, 13.409, 343.839

Trichromacy



Original Color
78, 9.462, 20.118

Protanomaly
78, 4.891, 25.935

Deuteranomaly
78, 9.848, 20.152

Tritanomaly
78, 11.169, 354.868

Monochromacy



Original Color
78, 9.462, 20.118

Achromatopsia
79, 0.010, 296.813

Achromatomaly
78, 3.343, 19.510

CSS Examples

Text

The CSS property to change the color of the text to CIELCh 78, 9.462, 20.118 is called "color". The color property can be set on classes, ids or directly on the HTML element.

This example shows how text in the color `rgb(212, 187, 187)` looks like.

```
.text, #text, p{  
    color:rgb(212, 187, 187)  
}
```

If you want to add a text shadow in that color use the text-shadow property, you can generate a text shadow directly with our [CSS Text Shadow Generator](#).

Here you see how black text with a 4 pixel rgb(212, 187, 187) colored shadow looks like.

```
.shadow{ text-shadow: 4px 4px 2px rgb(212, 187, 187) }
```

Border

The CSS property to change the border of an element to CIELCh 78, 9.462, 20.118 is called "border". The border property can be set on classes, ids or directly on the HTML element.

This example shows the color as border, it can be applied via the CSS property "border" or "border-color".

```
.border, #border, table{ border:4px solid rgb(212, 187, 187) }
```

If only the border color should be changed use the property `border-color`.

```
.border{ border-color:rgb(212, 187, 187) }
```

If you want to add a box shadow in that color use:

Here you see how a box with a 4 pixel `rgb(212, 187, 187)` colored shadow looks like.

```
.boxshadow{ -moz-box-shadow:4px 4px 4px  
4px rgb(212, 187, 187); -webkit-box-  
shadow:4px 4px 4px 4px rgb(212, 187, 187);  
box-shadow:4px 4px 4px 4px rgb(212, 187,  
187) }
```

Background

The CSS property to change the background color of an element to CIELCh 78, 9.462, 20.118 is called "background". The background property can be set on classes, ids or directly on the HTML element.

```
.background, #background, body{  
background: rgb(212, 187, 187) }
```

If only the background color should be changed can be used:

```
.background{ background-color: rgb(212,  
187, 187) }
```

This example shows the color as background, it is applied via the CSS property "background".

To optimize and compress your CSS code, you can use our [online CSS compressor and optimizer](#) based on csstidy. If you want to create a linear or radial gradient as background or border, check our [CSS Gradient Generator](#).

Hey! You found this booklet interesting? Support Converting Colors with the new Membership Option!

The pro membership hides all ads, plus gives you double the colors in the color bucket, and more awesome pro features!

[Learn more, Memberships starting at \\$2.50/m!](#)

**Follow me
on Twitter!**

@ConvertingColor