

Converting Colors

CIELCh(78, 9.860, 20.169)

Have a look what the booklet for
CIELCh(78, 9.860, 20.169) contains.

CIELCh(78, 9.848, 20.152)	3
<i>Conversions</i>	4
<i>Details</i>	6
<i>Harmonies</i>	11
<i>Previews</i>	20
<i>Color Blindness Simulation</i>	23
<i>CSS Examples</i>	26

Color

CIELCh(78, 9.848, 20.152)

Conversions

Conversions Part 1

Format	Color
Hex	D5BBBB
RGB	213, 187, 187
RGB Percent	84%, 73%, 73%
CMY	0.1651, 0.2670, 0.2671
CMYK	0.00, 0.12, 0.12, 0.17
HSL	0°, 24%, 78%
HSV	0°, 12%, 83%
XYZ	54.1181, 53.2120, 54.3758
YIQ	194.7740, 15.4960, 5.5120

Conversions

Conversions Part 2

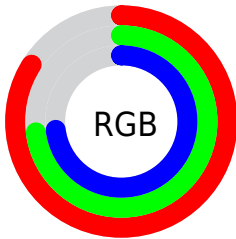
Format	Color
R _Y B	213, 187, 187
Decimal	14007227
CIE Lab	78.00, 9.25, 3.39
CIE LCh	78, 9.848, 20.152
Yxy	53.2120, 0.3347, 0.3291
Android (android.graphics.Color)	4292197307 (0xFFD5BBBB)
YUV	194.7740, -3.8326, 15.9842
Hunter-Lab	72.9466, 4.7704, 6.8667

Details

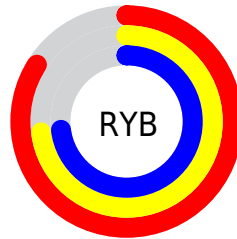
The CIELCh color $78, 9.848, 20.152$ is a light color, and the websafe version is hex `CCCCCC`. A complement of this color would be $83, 9.110, 198.823$, and the grayscale version is $79, 0.010, 296.813$.

A 20% lighter version of the original color is $97, 4.267, 19.539$, and $58, 9.711, 20.372$ is the 20% darker color. If you saturate the color by 10%, you get $72, 18.626, 21.059$, and if you desaturate by 10%, it is $84, 1.714, 19.214$.

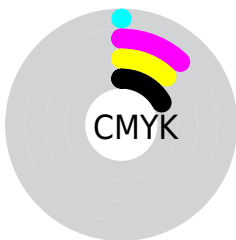
Distribution



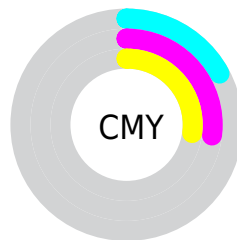
- Red (84%)
- Green (73%)
- Blue (73%)



- Red (84%)
- Yellow (73%)
- Blue (73%)



- Cyan (0%)
- Magenta (12%)
- Yellow (12%)
- Black (17%)




- Cyan (17%)
- Magenta (27%)
- Yellow (27%)

Brightness & Saturation Gradients

These gradients show how the CIELCh color 78, 9.848, 20.152 changes by changing the brightness by 10 percent. The first figure shows a shift by +10% for each color and the second figure -10%.

Similar to the brightness gradients but the following saturation gradients show a change of the CIELCh color 78, 9.848, 20.152 by changing the saturation by 10% instead.

 78, 9.848, 20.152  78, 9.848, 20.152

 100, 9.848, 20.152  68, 9.848, 20.152

 98, 9.848, 20.152  58, 9.848, 20.152

 48, 9.848, 20.152

 38, 9.848, 20.152

 28, 9.848, 20.152

 18, 9.848, 20.152

 8, 9.848, 20.152

 0, 9.848, 20.152

 78, 9.848, 20.152  78, 9.848, 20.152

72, 18.626, 21.059

84, 1.714, 19.214

67, 28.050, 22.199

90, 5.803, 199.125

61, 38.052, 23.684

96, 12.760,
198.656

57, 48.480, 25.623

97, 14.082,
198.567

52, 59.076, 28.122

49, 69.478, 31.228

47, 79.150, 34.775

45, 87.006, 38.090

44, 91.261, 40.001

Harmonies

Complementary

The Complementary color scheme is a pair of colors which are on the opposite of each other on the color wheel.



78, 9.848, 20.152



83, 9.110, 198.823

Rectangle

The Rectangle color scheme consists of four colors that form a rectangle on the color wheel.



78, 9.848, 20.152



78, 9.848, 70.152



78, 9.848, 200.152



78, 9.848, 250.152

Sweetspot

The Sweet Spot groups the original color and five complimentary colors.



78, 9.846, 20.164



97, 3.616, 19.478



79, 16.825, 325.094



51, 2.577, 19.555



0, 0.000, 0.000



53, 0.007, 296.813

Same Dimension

The Same Dimension uses a secret algorithm to generate beautiful new colors.



78, 9.846, 20.164



90, 14.167, 20.408



81, 8.447, 73.885



42, 4.549, 19.941



35, 77.347, 39.900



5, 21.998, 19.774

Inverse Universe

The Inverse Universe completely reimagines the original color for something new.



83, 9.110, 198.823



97, 12.849, 198.661



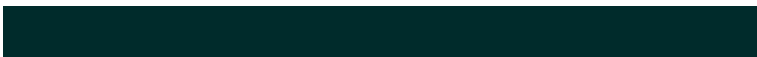
80, 8.198, 257.091



44, 4.287, 198.986



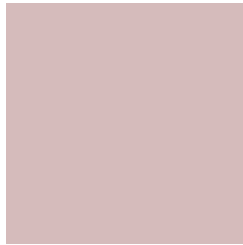
63, 37.115, 196.409



15, 14.556, 196.405

Previews

White Background



This preview shows how the CIELCh color 78, 9.848, 20.152 looks on a white background.

Color Contrast Check

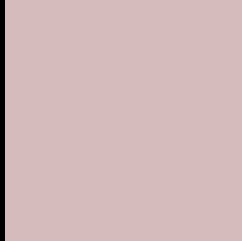
Large Text (above 18pt) WCAG AA × Fail

Any Text WCAG AA × Fail

Large Text (above 18pt) WCAG AAA × Fail

Any Text WCAG AAA × Fail

Black Background



This preview shows how the CIE LCh color 78, 9.848, 20.152 looks on a black background.

Color Contrast Check

Large Text (above 18pt) WCAG AA ✓ Pass

Any Text WCAG AA ✓ Pass

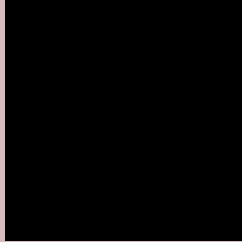
Large Text (above 18pt) WCAG AAA ✓ Pass

Any Text WCAG AAA ✓ Pass

If you want to check with other color combinations, try the [Color Contrast Checker](#).

CIELCh 78, 9.848, 20.152

Background



This preview shows how black text looks on a background with the CIELCh color 78, 9.848, 20.152.



This preview shows how white text looks on a background with the CIELCh color 78, 9.848, 20.152.

Color Blindness Simulation

Color vision deficiency is a very complex topic, and I could not describe the different causes any better than Wikipedia does, so if you want to learn more, you should check out their [article about color blindness](#).

Dichromacy



Original Color

78, 9.848, 20.152

Protanopia

78, 2.130, 49.342

Deuteranopia

78, 10.235, 20.185



Tritanopia
78, 13.417, 346.686

Trichromacy



Original Color
78, 9.848, 20.152

Protanomaly
78, 4.891, 25.935

Deuteranomaly
78, 10.235, 20.185

Tritanomaly
78, 11.511, 355.718

Monochromacy



Original Color
78, 9.848, 20.152

Achromatopsia
79, 0.010, 296.813

Achromatomaly
78, 3.718, 19.556

CSS Examples

Text

The CSS property to change the color of the text to CIELCh 78, 9.848, 20.152 is called "color". The color property can be set on classes, ids or directly on the HTML element.

This example shows how text in the color `rgb(213, 187, 187)` looks like.

```
.text, #text, p{  
    color:rgb(213, 187, 187)  
}
```

If you want to add a text shadow in that color use the text-shadow property, you can generate a text shadow directly with our [CSS Text Shadow Generator](#).

Here you see how black text with a 4 pixel rgb(213, 187, 187) colored shadow looks like.

```
.shadow{ text-shadow: 4px 4px 2px rgb(213, 187, 187) }
```

Border

The CSS property to change the border of an element to CIELCh 78, 9.848, 20.152 is called "border". The border property can be set on classes, ids or directly on the HTML element.

This example shows the color as border, it can be applied via the CSS property "border" or "border-color".

```
.border, #border, table{ border:4px solid rgb(213, 187, 187) }
```

If only the border color should be changed use the property `border-color`.

```
.border{ border-color:rgb(213, 187, 187) }
```

If you want to add a box shadow in that color use:

Here you see how a box with a 4 pixel `rgb(213, 187, 187)` colored shadow looks like.

```
.boxshadow{ -moz-box-shadow:4px 4px 4px  
4px rgb(213, 187, 187); -webkit-box-  
shadow:4px 4px 4px 4px rgb(213, 187, 187);  
box-shadow:4px 4px 4px 4px rgb(213, 187,  
187) }
```

Background

The CSS property to change the background color of an element to CIELCh 78, 9.848, 20.152 is called "background". The background property can be set on classes, ids or directly on the HTML element.

```
.background, #background, body{  
background: rgb(213, 187, 187) }
```

If only the background color should be changed can be used:

```
.background{ background-color: rgb(213,  
187, 187) }
```

This example shows the color as background, it is applied via the CSS property "background".

To optimize and compress your CSS code, you can use our [online CSS compressor and optimizer](#) based on csstidy. If you want to create a linear or radial gradient as background or border, check our [CSS Gradient Generator](#).

Hey! You found this booklet interesting? Support Converting Colors with the new Membership Option!

The pro membership hides all ads, plus gives you double the colors in the color bucket, and more awesome pro features!

[Learn more, Memberships starting at \\$2.50/m!](#)

**Follow me
on Twitter!**

@ConvertingColor