

Converting Colors

CIELCh(79, 10.107, 28.800)

Have a look what the booklet for
CIELCh(79, 10.107, 28.800) contains.

CIELCh(79, 10.004, 29.264)	3
<i>Conversions</i>	4
<i>Details</i>	6
<i>Harmonies</i>	11
<i>Previews</i>	20
<i>Color Blindness Simulation</i>	23
<i>CSS Examples</i>	26

Color

CIELCh(79, 10.004, 29.264)

Conversions

Conversions Part 1

Format	Color
Hex	D8BEBB
RGB	216, 190, 187
RGB Percent	85%, 75%, 73%
CMY	0.1535, 0.2554, 0.2672
CMYK	0.00, 0.12, 0.13, 0.15
HSL	6°, 27%, 79%
HSV	6°, 13%, 85%
XYZ	55.6175, 54.9284, 54.6091
YIQ	197.4320, 16.4590, 4.5790

Conversions

Conversions Part 2

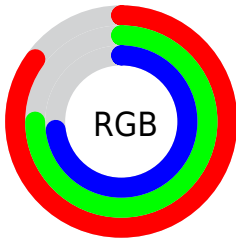
Format	Color
RYB	216, 190, 187
Decimal	14204603
CIELab	79.00, 8.73, 4.89
CIELCh	79, 10.004, 29.264
Yxy	54.9284, 0.3368, 0.3326
Android (android.graphics.Color)	4292394683 (0xFFD8BEBB)
YUV	197.4320, -5.1430, 16.2841
Hunter-Lab	74.1137, 4.2537, 8.1930

Details

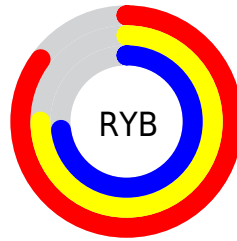
The CIELCh color $79, 10.004, 29.264$ is a light color, and the websafe version is hex `CCCCCC`. A complement of this color would be $83, 9.154, 208.843$, and the grayscale version is $80, 0.010, 296.813$.

A 20% lighter version of the original color is $97, 3.531, 45.031$, and $59, 9.898, 30.117$ is the 20% darker color. If you saturate the color by 10%, you get $74, 18.190, 29.751$, and if you desaturate by 10%, it is $84, 2.453, 28.803$.

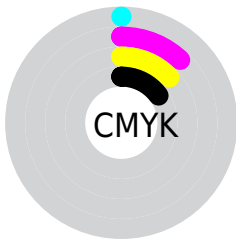
Distribution



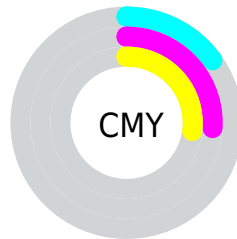
- Red (85%)
- Green (75%)
- Blue (73%)



- Red (85%)
- Yellow (75%)
- Blue (73%)



- Cyan (0%)
- Magenta (12%)
- Yellow (13%)
- Black (15%)



- Cyan (15%)
- Magenta (26%)
- Yellow (27%)


Brightness & Saturation Gradients

These gradients show how the CIELCh color 79, 10.004, 29.264 changes by changing the brightness by 10 percent. The first figure shows a shift by +10% for each color and the second figure -10%.

Similar to the brightness gradients but the following saturation gradients show a change of the CIELCh color 79, 10.004, 29.264 by changing the saturation by 10% instead.

 79, 10.004, 29.264

 79, 10.004, 29.264

 100, 10.004,
29.264

 69, 10.004, 29.264

 99, 10.004, 29.264

 59, 10.004, 29.264

 49, 10.004, 29.264

 39, 10.004, 29.264

 29, 10.004, 29.264

 19, 10.004, 29.264

 9, 10.004, 29.264

 0, 10.004, 29.264

 79, 10.004, 29.264

 79, 10.004, 29.264

74, 18.190, 29.751

84, 2.453, 28.803

69, 27.042, 30.413

90, 4.509, 208.998

64, 36.549, 31.333

95, 10.940,
208.832

59, 46.641, 32.579

97, 13.136,
198.629

55, 57.162, 34.205

52, 67.813, 36.208

49, 78.016, 38.406

47, 86.505, 40.212

46, 90.628, 41.090

Harmonies

Complementary

The Complementary color scheme is a pair of colors which are on the opposite of each other on the color wheel.



79, 10.004, 29.264



83, 9.154, 208.843

Rectangle

The Rectangle color scheme consists of four colors that form a rectangle on the color wheel.



79, 10.004, 29.264



79, 10.004, 79.264



79, 10.004, 209.264



79, 10.004, 259.264

Sweetspot

The Sweet Spot groups the original color and five complimentary colors.



79, 10.003, 29.277



97, 3.280, 28.854



79, 17.490, 328.033



52, 2.338, 28.905



0, 0.000, 0.000



53, 0.007, 296.813

Same Dimension

The Same Dimension uses a secret algorithm to generate beautiful new colors.



79, 10.003, 29.277



90, 13.794, 29.392



83, 10.162, 83.679



42, 4.131, 29.117



36, 75.813, 41.288



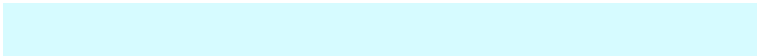
6, 20.588, 25.077

Inverse Universe

The Inverse Universe completely reimagines the original color for something new.



83, 9.154, 208.843



96, 12.382, 208.814



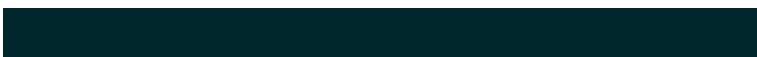
80, 10.028, 267.303



44, 3.886, 208.909



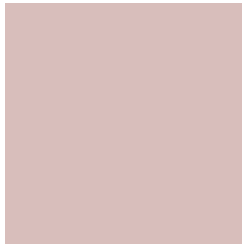
58, 32.989, 214.795



13, 13.138, 211.066

Previews

White Background



This preview shows how the CIELCh color 79, 10.004, 29.264 looks on a white background.

Color Contrast Check

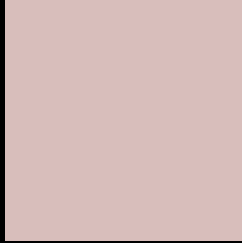
Large Text (above 18pt) WCAG AA × Fail

Any Text WCAG AA × Fail

Large Text (above 18pt) WCAG AAA × Fail

Any Text WCAG AAA × Fail

Black Background



This preview shows how the CIELCh color 79, 10.004, 29.264 looks on a black background.

Color Contrast Check

Large Text (above 18pt) WCAG AA ✓ Pass

Any Text WCAG AA ✓ Pass

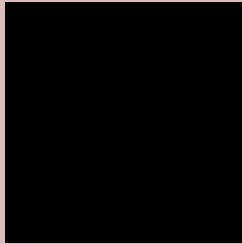
Large Text (above 18pt) WCAG AAA ✓ Pass

Any Text WCAG AAA ✓ Pass

If you want to check with other color combinations, try the [Color Contrast Checker](#).

CIELCh 79, 10.004, 29.264

Background



This preview shows how black text looks on a background with the CIELCh color 79, 10.004, 29.264.



This preview shows how white text looks on a background with the CIELCh color 79, 10.004, 29.264.

Color Blindness Simulation

Color vision deficiency is a very complex topic, and I could not describe the different causes any better than Wikipedia does, so if you want to learn more, you should check out their [article about color blindness](#).

Dichromacy



Original Color


79, 10.004, 29.264

Protanopia

79, 3.458, 69.601

Deuteranopia

79, 11.082, 25.716



Tritanopia
79, 13.379, 346.668

Trichromacy



Original Color
79, 10.004, 29.264

Protanomaly
79, 5.311, 43.247

Deuteranomaly
79, 10.695, 25.885

Tritanomaly
79, 11.107, 0.734

Monochromacy



Original Color
79, 10.004, 29.264

Achromatopsia
80, 0.010, 296.813

Achromatomaly
79, 3.750, 27.697

CSS Examples

Text

The CSS property to change the color of the text to CIELCh 79, 10.004, 29.264 is called "color". The color property can be set on classes, ids or directly on the HTML element.

This example shows how text in the color `rgb(216, 190, 187)` looks like.

```
.text, #text, p{  
    color:rgb(216, 190, 187)  
}
```

If you want to add a text shadow in that color use the text-shadow property, you can generate a text shadow directly with our [CSS Text Shadow Generator](#).

Here you see how black text with a 4 pixel rgb(216, 190, 187) colored shadow looks like.

```
.shadow{ text-shadow: 4px 4px 2px rgb(216, 190, 187) }
```

Border

The CSS property to change the border of an element to CIELCh 79, 10.004, 29.264 is called "border". The border property can be set on classes, ids or directly on the HTML element.

This example shows the color as border, it can be applied via the CSS property "border" or "border-color".

```
.border, #border, table{ border:4px solid rgb(216, 190, 187) }
```

If only the border color should be changed use the property border-color.

```
.border{ border-color:rgb(216, 190, 187) }
```

If you want to add a box shadow in that color use:

Here you see how a box with a 4 pixel rgb(216, 190, 187) colored shadow looks like.

```
.boxshadow{ -moz-box-shadow:4px 4px 4px  
4px rgb(216, 190, 187); -webkit-box-  
shadow:4px 4px 4px 4px rgb(216, 190, 187);  
box-shadow:4px 4px 4px 4px rgb(216, 190,  
187) }
```

Background

The CSS property to change the background color of an element to CIELCh 79, 10.004, 29.264 is called "background". The background property can be set on classes, ids or directly on the HTML element.

```
.background, #background, body{  
background: rgb(216, 190, 187) }
```

If only the background color should be changed can be used:

```
.background{ background-color: rgb(216,  
190, 187) }
```

This example shows the color as background, it is applied via the CSS property "background".

To optimize and compress your CSS code, you can use our [online CSS compressor and optimizer](#) based on csstidy. If you want to create a linear or radial gradient as background or border, check our [CSS Gradient Generator](#).

Hey! You found this booklet interesting? Support Converting Colors with the new Membership Option!

The pro membership hides all ads, plus gives you double the colors in the color bucket, and more awesome pro features!

[Learn more, Memberships starting at \\$2.50/m!](#)

**Follow me
on Twitter!**

@ConvertingColor