

Converting Colors

CIELCh(79, 10.584, 56.538)

Have a look what the booklet for
CIELCh(79, 10.584, 56.538) contains.

CIELCh(79, 10.291, 54.447)	3
<i>Conversions</i>	4
<i>Details</i>	6
<i>Harmonies</i>	11
<i>Previews</i>	20
<i>Color Blindness Simulation</i>	23
<i>CSS Examples</i>	26

Color

CIELCh(79, 10.291, 54.447)

Conversions

Conversions Part 1

Format	Color
Hex	D5BFB4
RGB	213, 191, 180
RGB Percent	84%, 75%, 71%
CMY	0.1633, 0.2496, 0.2927
CMYK	0.00, 0.10, 0.15, 0.16
HSL	20°, 28%, 77%
HSV	20°, 15%, 84%
XYZ	54.5301, 54.9284, 51.0970
YIQ	196.3240, 16.6430, 1.2430

Conversions

Conversions Part 2

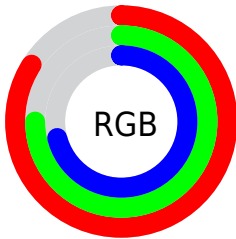
Format	Color
RYB	213, 197, 180
Decimal	14008244
CIELab	79.00, 5.98, 8.37
CIELCh	79, 10.291, 54.447
Yxy	54.9284, 0.3396, 0.3421
Android (android.graphics.Color)	4292198324 (0xFFD5BFB4)
YUV	196.3240, -8.0477, 14.6249
Hunter-Lab	74.1137, 1.6348, 11.0026

Details

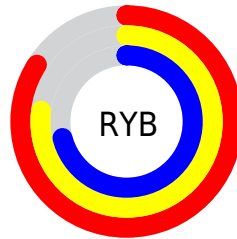
The CIELCh color **79, 10.291, 54.447** is a light color, and the websafe version is hex **CCCCCC**. A complement of this color would be **80, 9.497, 237.239**, and the grayscale version is **79, 0.010, 296.813**.

A 20% lighter version of the original color is **98, 6.273, 82.451**, and **59, 10.352, 56.686** is the 20% darker color. If you saturate the color by 10%, you get **75, 17.574, 53.764**, and if you desaturate by 10%, it is **83, 3.510, 55.134**.

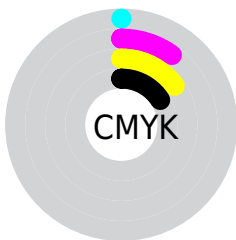
Distribution



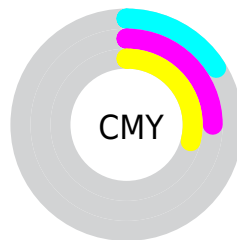
- Red (84%)
- Green (75%)
- Blue (71%)



- Red (84%)
- Yellow (77%)
- Blue (71%)



- Cyan (0%)
- Magenta (10%)
- Yellow (15%)
- Black (16%)



- Cyan (16%)
- Magenta (25%)
- Yellow (29%)

Brightness & Saturation Gradients

These gradients show how the CIELCh color 79, 10.291, 54.447 changes by changing the brightness by 10 percent. The first figure shows a shift by +10% for each color and the second figure -10%.

Similar to the brightness gradients but the following saturation gradients show a change of the CIELCh color 79, 10.291, 54.447 by changing the saturation by 10% instead.

■ 79, 10.291, 54.447

■ 79, 10.291, 54.447

■ 100, 10.291,
54.447

■ 69, 10.291, 54.447

■ 99, 10.291, 54.447

■ 59, 10.291, 54.447

■ 49, 10.291, 54.447

■ 39, 10.291, 54.447

■ 29, 10.291, 54.447

■ 19, 10.291, 54.447

■ 9, 10.291, 54.447

■ 0, 10.291, 54.447

■ 79, 10.291, 54.447

■ 79, 10.291, 54.447

75, 17.574, 53.764

83, 3.510, 55.134

71, 25.402, 53.123

87, 2.817, 236.261

67, 33.799, 52.564

92, 8.740, 236.956

64, 42.747, 52.095

95, 12.081,
215.478

60, 52.151, 51.703

97, 13.933,
198.576

57, 61.746, 51.308

54, 70.921, 50.701

51, 78.481, 49.427

50, 81.445, 48.794

Harmonies

Complementary

The Complementary color scheme is a pair of colors which are on the opposite of each other on the color wheel.



79, 10.291, 54.447



80, 9.497, 237.239

Rectangle

The Rectangle color scheme consists of four colors that form a rectangle on the color wheel.



79, 10.291, 54.447



79, 10.291, 104.447



79, 10.291, 234.447



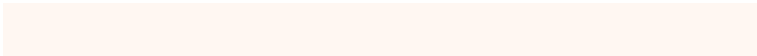
79, 10.291, 284.447

Sweetspot

The Sweet Spot groups the original color and five complimentary colors.



79, 10.291, 54.461



98, 3.701, 55.154



77, 16.953, 336.757



52, 2.531, 55.118



0, 0.000, 0.000



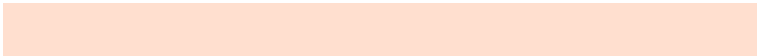
53, 0.007, 296.813

Same Dimension

The Same Dimension uses a secret algorithm to generate beautiful new colors.



79, 10.291, 54.461



91, 14.802, 54.198



83, 14.599, 100.606



43, 3.705, 54.888



41, 68.630, 49.342



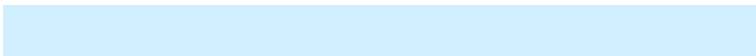
8, 17.984, 40.779

Inverse Universe

The Inverse Universe completely reimagines the original color for something new.



80, 9.497, 237.239



93, 13.371, 237.667



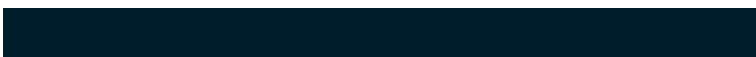
76, 14.908, 284.235



43, 3.537, 236.635



46, 38.258, 261.765



9, 13.637, 250.528

Previews

White Background



This preview shows how the CIELCh color 79, 10.291, 54.447 looks on a white background.

Color Contrast Check

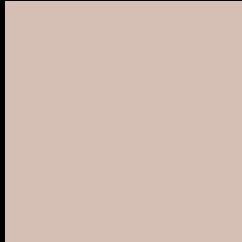
Large Text (above 18pt) WCAG AA × Fail

Any Text WCAG AA × Fail

Large Text (above 18pt) WCAG AAA × Fail

Any Text WCAG AAA × Fail

Black Background



This preview shows how the CIELCh color 79, 10.291, 54.447 looks on a black background.

Color Contrast Check

Large Text (above 18pt) WCAG AA ✓ Pass

Any Text WCAG AA ✓ Pass

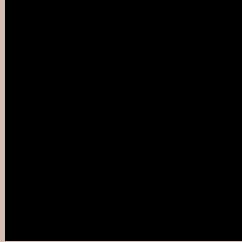
Large Text (above 18pt) WCAG AAA ✓ Pass

Any Text WCAG AAA ✓ Pass

If you want to check with other color combinations, try the [Color Contrast Checker](#).

CIELCh 79, 10.291, 54.447

Background



This preview shows how black text looks on a background with the CIELCh color 79, 10.291, 54.447.



This preview shows how white text looks on a background with the CIELCh color 79, 10.291, 54.447.

Color Blindness Simulation

Color vision deficiency is a very complex topic, and I could not describe the different causes any better than Wikipedia does, so if you want to learn more, you should check out their [article about color blindness](#).

Dichromacy



Original Color

79, 10.291, 54.447

Protanopia

79, 7.392, 88.503

Deuteranopia

79, 12.702, 39.720



Tritanopia
79, 13.077, 342.809

Trichromacy



Original Color
79, 10.291, 54.447

Protanomaly
79, 8.281, 76.010

Deuteranomaly
79, 11.809, 43.934

Tritanomaly
79, 10.234, 2.054

Monochromacy



Original Color
79, 10.291, 54.447

Achromatopsia
80, 0.010, 296.813

Achromatomaly
79, 3.647, 55.097

CSS Examples

Text

The CSS property to change the color of the text to CIELCh 79, 10.291, 54.447 is called "color". The color property can be set on classes, ids or directly on the HTML element.

This example shows how text in the color `rgb(213, 191, 180)` looks like.

```
.text, #text, p{  
    color:rgb(213, 191, 180)  
}
```

If you want to add a text shadow in that color use the text-shadow property, you can generate a text shadow directly with our [CSS Text Shadow Generator](#).

Here you see how black text with a 4 pixel rgb(213, 191, 180) colored shadow looks like.

```
.shadow{ text-shadow: 4px 4px 2px rgb(213, 191, 180) }
```

Border

The CSS property to change the border of an element to CIELCh 79, 10.291, 54.447 is called "border". The border property can be set on classes, ids or directly on the HTML element.

This example shows the color as border, it can be applied via the CSS property "border" or "border-color".

```
.border, #border, table{ border:4px solid rgb(213, 191, 180) }
```

If only the border color should be changed use the property `border-color`.

```
.border{ border-color:rgb(213, 191, 180) }
```

If you want to add a box shadow in that color use:

Here you see how a box with a 4 pixel `rgb(213, 191, 180)` colored shadow looks like.

```
.boxshadow{ -moz-box-shadow:4px 4px 4px  
4px rgb(213, 191, 180); -webkit-box-  
shadow:4px 4px 4px 4px rgb(213, 191, 180);  
box-shadow:4px 4px 4px 4px rgb(213, 191,  
180) }
```

Background

The CSS property to change the background color of an element to CIELCh 79, 10.291, 54.447 is called "background". The background property can be set on classes, ids or directly on the HTML element.

```
.background, #background, body{  
background: rgb(213, 191, 180) }
```

If only the background color should be changed can be used:

```
.background{ background-color: rgb(213,  
191, 180) }
```

This example shows the color as background, it is applied via the CSS property "background".

To optimize and compress your CSS code, you can use our [online CSS compressor and optimizer](#) based on csstidy. If you want to create a linear or radial gradient as background or border, check our [CSS Gradient Generator](#).

Hey! You found this booklet interesting? Support Converting Colors with the new Membership Option!

The pro membership hides all ads, plus gives you double the colors in the color bucket, and more awesome pro features!

[Learn more, Memberships starting at \\$2.50/m!](#)

**Follow me
on Twitter!**

@ConvertingColor