

Converting Colors

CIELCh(79, 10.587, 20.205)

Have a look what the booklet for
CIELCh(79, 10.587, 20.205) contains.

CIELCh(79, 10.599, 20.210)	3
<i>Conversions</i>	4
<i>Details</i>	6
<i>Harmonies</i>	11
<i>Previews</i>	20
<i>Color Blindness Simulation</i>	23
<i>CSS Examples</i>	26

Color

CIELCh(79, 10.599, 20.210)

Conversions

Conversions Part 1

Format	Color
Hex	D9BDBD
RGB	217, 189, 189
RGB Percent	85%, 74%, 74%
CMY	0.1483, 0.2581, 0.2582
CMYK	0.00, 0.13, 0.13, 0.15
HSL	0°, 27%, 80%
HSV	0°, 13%, 85%
XYZ	56.1054, 54.9284, 55.8857
YIQ	197.3720, 16.6880, 5.9360

Conversions

Conversions Part 2

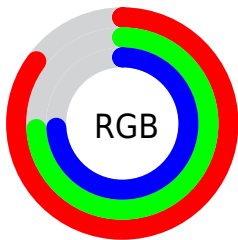
Format	Color
R _Y B	217, 189, 189
Decimal	14269885
CIE Lab	79.00, 9.95, 3.66
CIE LCh	79, 10.599, 20.210
Yxy	54.9284, 0.3361, 0.3291
Android (android.graphics.Color)	4292459965 (0xFFD9BDBD)
YUV	197.3720, -4.1274, 17.2138
Hunter-Lab	74.1137, 5.4287, 7.1717

Details

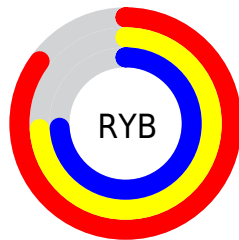
The CIELCh color $79, 10.599, 20.210$ is a light color, and the websafe version is hex `CCCCCC`. A complement of this color would be $85, 9.759, 198.784$, and the grayscale version is $80, 0.010, 296.813$.

A 20% lighter version of the original color is $97, 3.545, 19.458$, and $59, 10.508, 20.447$ is the 20% darker color. If you saturate the color by 10%, you get $73, 19.567, 21.131$, and if you desaturate by 10%, it is $85, 2.288, 19.336$.

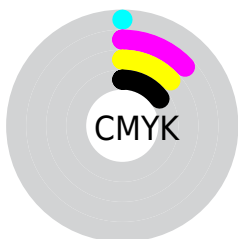
Distribution



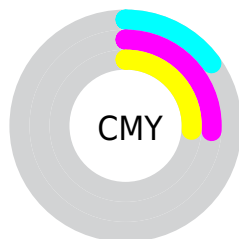
- Red (85%)
- Green (74%)
- Blue (74%)



- Red (85%)
- Yellow (74%)
- Blue (74%)



- Cyan (0%)
- Magenta (13%)
- Yellow (13%)
- Black (15%)



- Cyan (15%)
- Magenta (26%)
- Yellow (26%)

Brightness & Saturation Gradients

These gradients show how the CIELCh color 79, 10.599, 20.210 changes by changing the brightness by 10 percent. The first figure shows a shift by +10% for each color and the second figure -10%.

Similar to the brightness gradients but the following saturation gradients show a change of the CIELCh color 79, 10.599, 20.210 by changing the saturation by 10% instead.

79, 10.599, 20.210

79, 10.599, 20.210

100, 10.599,
20.210

69, 10.599, 20.210

99, 10.599, 20.210

59, 10.599, 20.210

49, 10.599, 20.210

39, 10.599, 20.210

29, 10.599, 20.210

19, 10.599, 20.210

9, 10.599, 20.210

0, 10.599, 20.210

79, 10.599, 20.210

79, 10.599, 20.210

73, 19.567, 21.131

85, 2.288, 19.336

68, 29.190, 22.294

91, 5.393, 199.167

62, 39.393, 23.811

97, 12.499,
198.682

57, 50.014, 25.790

97, 12.714,
198.657

53, 60.782, 28.338

50, 71.319, 31.492

47, 81.057, 35.058

46, 88.814, 38.307

45, 92.636, 40.001

Harmonies

Complementary

The Complementary color scheme is a pair of colors which are on the opposite of each other on the color wheel.



79, 10.599, 20.210



85, 9.759, 198.784

Rectangle

The Rectangle color scheme consists of four colors that form a rectangle on the color wheel.



79, 10.599, 20.210



79, 10.599, 70.210



79, 10.599, 200.210



79, 10.599, 250.210

Sweetspot

The Sweet Spot groups the original color and five complimentary colors.



79, 10.597, 20.221



97, 3.616, 19.479



80, 18.064, 325.134



51, 2.577, 19.556



0, 0.000, 0.000



53, 0.007, 296.813

Same Dimension

The Same Dimension uses a secret algorithm to generate beautiful new colors.



79, 10.597, 20.221



90, 14.166, 20.408



83, 9.081, 73.801



43, 4.638, 19.943



36, 78.233, 39.930



5, 23.838, 20.276

Inverse Universe

The Inverse Universe completely reimagines the original color for something new.



85, 9.759, 198.784



97, 12.849, 198.661



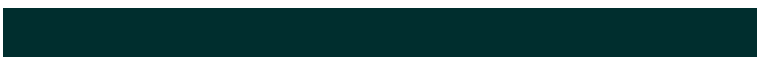
81, 8.795, 257.193



45, 4.370, 198.985



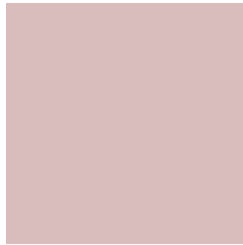
64, 37.523, 196.409



16, 15.071, 196.405

Previews

White Background



This preview shows how the CIELCh color 79, 10.599, 20.210 looks on a white background.

Color Contrast Check

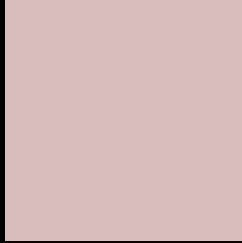
Large Text (above 18pt) WCAG AA × Fail

Any Text WCAG AA × Fail

Large Text (above 18pt) WCAG AAA × Fail

Any Text WCAG AAA × Fail

Black Background



This preview shows how the CIE LCh color 79, 10.599, 20.210 looks on a black background.

Color Contrast Check

Large Text (above 18pt) WCAG AA ✓ Pass

Any Text WCAG AA ✓ Pass

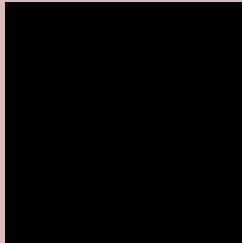
Large Text (above 18pt) WCAG AAA ✓ Pass

Any Text WCAG AAA ✓ Pass

If you want to check with other color combinations, try the [Color Contrast Checker](#).

CIELCh 79, 10.599, 20.210

Background



This preview shows how black text looks on a background with the CIELCh color 79, 10.599, 20.210.



This preview shows how white text looks on a background with the CIELCh color 79, 10.599, 20.210.

Color Blindness Simulation

Color vision deficiency is a very complex topic, and I could not describe the different causes any better than Wikipedia does, so if you want to learn more, you should check out their [article about color blindness](#).

Dichromacy



Original Color

79, 10.599, 20.210

Protanopia

79, 2.432, 60.286

Deuteranopia

79, 10.599, 20.210



Tritanopia
79, 14.292, 346.632

Trichromacy



Original Color
79, 10.599, 20.210

Protanomaly
79, 4.968, 32.021

Deuteranomaly
79, 10.599, 20.210

Tritanomaly
79, 12.178, 357.269

Monochromacy



Original Color
79, 10.599, 20.210

Achromatopsia
80, 0.010, 296.813

Achromatomaly
80, 3.706, 19.549

CSS Examples

Text

The CSS property to change the color of the text to CIELCh 79, 10.599, 20.210 is called "color". The color property can be set on classes, ids or directly on the HTML element.

This example shows how text in the color `rgb(217, 189, 189)` looks like.

```
.text, #text, p{  
    color:rgb(217, 189, 189)  
}
```

If you want to add a text shadow in that color use the text-shadow property, you can generate a text shadow directly with our [CSS Text Shadow Generator](#).

Here you see how black text with a 4 pixel rgb(217, 189, 189) colored shadow looks like.

```
.shadow{ text-shadow: 4px 4px 2px rgb(217, 189, 189) }
```

Border

The CSS property to change the border of an element to CIELCh 79, 10.599, 20.210 is called "border". The border property can be set on classes, ids or directly on the HTML element.

This example shows the color as border, it can be applied via the CSS property "border" or "border-color".

```
.border, #border, table{ border:4px solid rgb(217, 189, 189) }
```

If only the border color should be changed use the property `border-color`.

```
.border{ border-color:rgb(217, 189, 189) }
```

If you want to add a box shadow in that color use:

Here you see how a box with a 4 pixel `rgb(217, 189, 189)` colored shadow looks like.

```
.boxshadow{ -moz-box-shadow:4px 4px 4px  
4px rgb(217, 189, 189); -webkit-box-  
shadow:4px 4px 4px 4px rgb(217, 189, 189);  
box-shadow:4px 4px 4px 4px rgb(217, 189,  
189) }
```

Background

The CSS property to change the background color of an element to CIELCh 79, 10.599, 20.210 is called "background". The background property can be set on classes, ids or directly on the HTML element.

```
.background, #background, body{  
background: rgb(217, 189, 189) }
```

If only the background color should be changed can be used:

```
.background{ background-color: rgb(217,  
189, 189) }
```

This example shows the color as background, it is applied via the CSS property "background".

To optimize and compress your CSS code, you can use our [online CSS compressor and optimizer](#) based on csstidy. If you want to create a linear or radial gradient as background or border, check our [CSS Gradient Generator](#).

Hey! You found this booklet interesting? Support Converting Colors with the new Membership Option!

The pro membership hides all ads, plus gives you double the colors in the color bucket, and more awesome pro features!

[Learn more, Memberships starting at \\$2.50/m!](#)

**Follow me
on Twitter!**

@ConvertingColor