

Converting Colors

CIELCh(79, 10.795, 28.672)

Have a look what the booklet for
CIELCh(79, 10.795, 28.672) contains.

CIELCh(79, 10.783, 28.669)	3
<i>Conversions</i>	4
<i>Details</i>	6
<i>Harmonies</i>	11
<i>Previews</i>	20
<i>Color Blindness Simulation</i>	23
<i>CSS Examples</i>	26

Color

CIELCh(79, 10.783, 28.669)

Conversions

Conversions Part 1

Format	Color
Hex	D9BDBA
RGB	217, 189, 186
RGB Percent	85%, 74%, 73%
CMY	0.1475, 0.2573, 0.2691
CMYK	0.00, 0.13, 0.14, 0.15
HSL	6°, 29%, 79%
HSV	6°, 14%, 85%
XYZ	55.9108, 54.9284, 54.3180
YIQ	197.0300, 17.6510, 5.0030

Conversions

Conversions Part 2

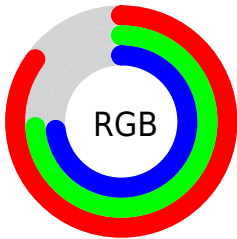
Format	Color
R _Y B	217, 189, 186
Decimal	14269882
CIE Lab	79.00, 9.46, 5.17
CIE LCh	79, 10.783, 28.669
Yxy	54.9284, 0.3385, 0.3326
Android (android.graphics.Color)	4292459962 (0xFFD9BDBA)
YUV	197.0300, -5.4378, 17.5137
Hunter-Lab	74.1137, 4.9601, 8.4259

Details

The CIELCh color **79, 10.783, 28.669** is a light color, and the websafe version is hex **CCCCCC**. A complement of this color would be **84, 9.809, 208.119**, and the grayscale version is **80, 0.010, 296.813**.

A 20% lighter version of the original color is **97, 3.861, 42.758**, and **59, 10.736, 29.442** is the 20% darker color. If you saturate the color by 10%, you get **74, 19.116, 29.200**, and if you desaturate by 10%, it is **84, 3.094, 28.211**.

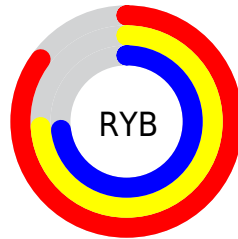
Distribution



Red (85%)

Green (74%)

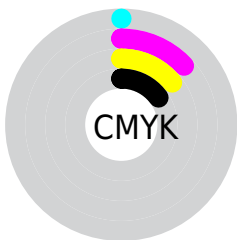
Blue (73%)



Red (85%)

Yellow (74%)

Blue (73%)

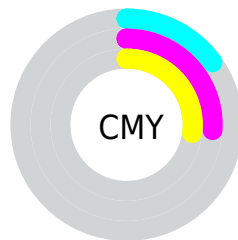


Cyan (0%)

Magenta (13%)

Yellow (14%)

Black (15%)



Cyan (15%)

Magenta (26%)

Yellow (27%)

Brightness & Saturation Gradients

These gradients show how the CIELCh color 79, 10.783, 28.669 changes by changing the brightness by 10 percent. The first figure shows a shift by +10% for each color and the second figure -10%.

Similar to the brightness gradients but the following saturation gradients show a change of the CIELCh color 79, 10.783, 28.669 by changing the saturation by 10% instead.

79, 10.783, 28.669

79, 10.783, 28.669

100, 10.783,
28.669

69, 10.783, 28.669

99, 10.783, 28.669

59, 10.783, 28.669

49, 10.783, 28.669

39, 10.783, 28.669

29, 10.783, 28.669

19, 10.783, 28.669

9, 10.783, 28.669

0, 10.783, 28.669

79, 10.783, 28.669

79, 10.783, 28.669

74, 19.116, 29.200

84, 3.094, 28.211

68, 28.120, 29.918

90, 3.995, 208.340

64, 37.777, 30.907

96, 10.542,
208.127

59, 48.006, 32.236

97, 12.647,
198.661

55, 58.631, 33.960

51, 69.334, 36.067

49, 79.491, 38.352

47, 87.737, 40.168

46, 91.259, 40.983

Harmonies

Complementary

The Complementary color scheme is a pair of colors which are on the opposite of each other on the color wheel.



79, 10.783, 28.669



84, 9.809, 208.119

Rectangle

The Rectangle color scheme consists of four colors that form a rectangle on the color wheel.



79, 10.783, 28.669



79, 10.783, 78.669



79, 10.783, 208.669



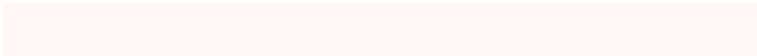
79, 10.783, 258.669

Sweetspot

The Sweet Spot groups the original color and five complimentary colors.



79, 10.782, 28.681



97, 3.299, 28.194



79, 18.905, 327.575



52, 2.352, 28.247



0, 0.000, 0.000



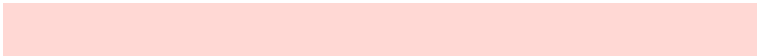
53, 0.007, 296.813

Same Dimension

The Same Dimension uses a secret algorithm to generate beautiful new colors.



79, 10.782, 28.681



89, 14.800, 28.815



83, 10.717, 82.023



43, 4.236, 28.473



37, 76.816, 41.173



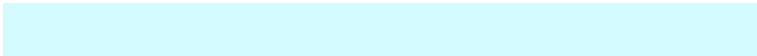
6, 22.349, 25.247

Inverse Universe

The Inverse Universe completely reimagines the original color for something new.



84, 9.809, 208.119



96, 13.189, 208.083



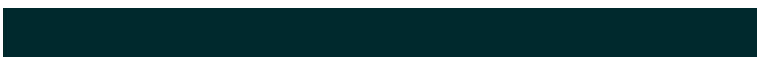
80, 10.528, 265.889



45, 3.984, 208.210



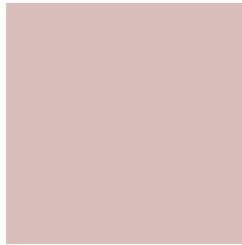
59, 33.518, 213.484



14, 13.658, 210.227

Previews

White Background



This preview shows how the CIELCh color 79, 10.783, 28.669 looks on a white background.

Color Contrast Check

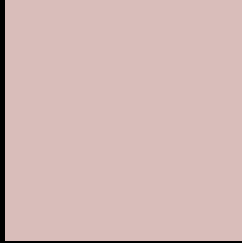
Large Text (above 18pt) WCAG AA × Fail

Any Text WCAG AA × Fail

Large Text (above 18pt) WCAG AAA × Fail

Any Text WCAG AAA × Fail

Black Background



This preview shows how the CIE LCh color 79, 10.783, 28.669 looks on a black background.

Color Contrast Check

Large Text (above 18pt) WCAG AA ✓ Pass

Any Text WCAG AA ✓ Pass

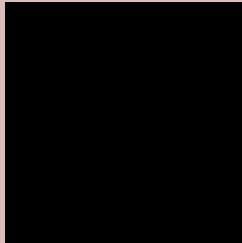
Large Text (above 18pt) WCAG AAA ✓ Pass

Any Text WCAG AAA ✓ Pass

If you want to check with other color combinations, try the [Color Contrast Checker](#).

CIELCh 79, 10.783, 28.669

Background



This preview shows how black text looks on a background with the CIELCh color 79, 10.783, 28.669.



This preview shows how white text looks on a background with the CIELCh color 79, 10.783, 28.669.

Color Blindness Simulation

Color vision deficiency is a very complex topic, and I could not describe the different causes any better than Wikipedia does, so if you want to learn more, you should check out their [article about color blindness](#).

Dichromacy



Original Color

79, 10.783, 28.669

Protanopia

79, 3.882, 74.605

Deuteranopia

79, 11.169, 28.404



Tritanopia
79, 14.292, 346.632

Trichromacy



Original Color
79, 10.783, 28.669

Protanomaly
79, 5.891, 46.484

Deuteranomaly
79, 11.169, 28.404

Tritanomaly
79, 11.996, 359.626

Monochromacy



Original Color
79, 10.783, 28.669

Achromatopsia
80, 0.010, 296.813

Achromatomaly
79, 3.750, 27.697

CSS Examples

Text

The CSS property to change the color of the text to CIELCh 79, 10.783, 28.669 is called "color". The color property can be set on classes, ids or directly on the HTML element.

This example shows how text in the color `rgb(217, 189, 186)` looks like.

```
.text, #text, p{  
    color:rgb(217, 189, 186)  
}
```

If you want to add a text shadow in that color use the text-shadow property, you can generate a text shadow directly with our [CSS Text Shadow Generator](#).

Here you see how black text with a 4 pixel rgb(217, 189, 186) colored shadow looks like.

```
.shadow{ text-shadow: 4px 4px 2px rgb(217, 189, 186) }
```

Border

The CSS property to change the border of an element to CIELCh 79, 10.783, 28.669 is called "border". The border property can be set on classes, ids or directly on the HTML element.

This example shows the color as border, it can be applied via the CSS property "border" or "border-color".

```
.border, #border, table{ border:4px solid rgb(217, 189, 186) }
```

If only the border color should be changed use the property `border-color`.

```
.border{ border-color:rgb(217, 189, 186) }
```

If you want to add a box shadow in that color use:

Here you see how a box with a 4 pixel `rgb(217, 189, 186)` colored shadow looks like.

```
.boxshadow{ -moz-box-shadow:4px 4px 4px  
4px rgb(217, 189, 186); -webkit-box-  
shadow:4px 4px 4px 4px rgb(217, 189, 186);  
box-shadow:4px 4px 4px 4px rgb(217, 189,  
186) }
```

Background

The CSS property to change the background color of an element to CIELCh 79, 10.783, 28.669 is called "background". The background property can be set on classes, ids or directly on the HTML element.

```
.background, #background, body{  
background: rgb(217, 189, 186) }
```

If only the background color should be changed can be used:

```
.background{ background-color: rgb(217,  
189, 186) }
```

This example shows the color as background, it is applied via the CSS property "background".

To optimize and compress your CSS code, you can use our [online CSS compressor and optimizer](#) based on csstidy. If you want to create a linear or radial gradient as background or border, check our [CSS Gradient Generator](#).

Hey! You found this booklet interesting? Support Converting Colors with the new Membership Option!

The pro membership hides all ads, plus gives you double the colors in the color bucket, and more awesome pro features!

[Learn more, Memberships starting at \\$2.50/m!](#)

**Follow me
on Twitter!**

@ConvertingColor