

# Converting Colors

CIELCh(79, 10.980, 20.165)

Have a look what the booklet for  
CIELCh(79, 10.980, 20.165) contains.

<b>CIELCh(79, 10.985, 20.243)</b> .....	3
<i><b>Conversions</b></i> .....	4
<i><b>Details</b></i> .....	6
<i><b>Harmonies</b></i> .....	11
<i><b>Previews</b></i> .....	20
<i><b>Color Blindness Simulation</b></i> .....	23
<i><b>CSS Examples</b></i> .....	26

# Color

**CIELCh(79, 10.985, 20.243)**

# Conversions

## Conversions Part 1

Format	Color
Hex	DABDBD
RGB	218, 189, 189
RGB Percent	85%, 74%, 74%
CMY	0.1454, 0.2591, 0.2591
CMYK	0.00, 0.13, 0.13, 0.15
HSL	0°, 28%, 80%
HSV	0°, 13%, 85%
XYZ	56.2500, 54.9284, 55.7400
YIQ	197.6710, 17.2840, 6.1480

# Conversions

## Conversions Part 2

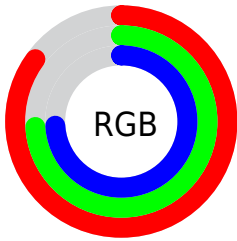
Format	Color
R <sub>Y</sub> B	218, 189, 189
Decimal	14335421
CIE Lab	79.00, 10.31, 3.80
CIE LCh	79, 10.985, 20.243
Yxy	54.9284, 0.3370, 0.3291
Android (android.graphics.Color)	4292525501 (0xFFDABDBD)
YUV	197.6710, -4.2748, 17.8285
Hunter-Lab	74.1137, 5.7770, 7.2883

# Details

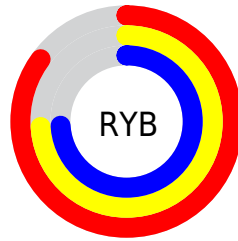
The CIELCh color  $79, 10.985, 20.243$  is a light color, and the websafe version is hex `FFCCCC`. A complement of this color would be  $85, 10.087, 198.759$ , and the grayscale version is  $80, 0.010, 296.813$ .

A 20% lighter version of the original color is  $97, 3.545, 19.458$ , and  $59, 10.922, 20.491$  is the 20% darker color. If you saturate the color by 10%, you get  $73, 20.006, 21.172$ , and if you desaturate by 10%, it is  $85, 2.624, 19.391$ .

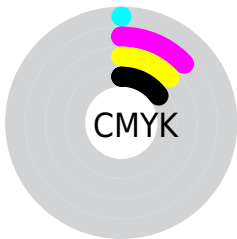
# Distribution



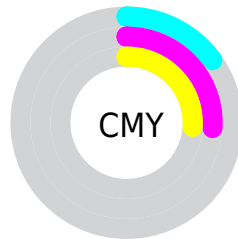
- Red (85%)
- Green (74%)
- Blue (74%)



- Red (85%)
- Yellow (74%)
- Blue (74%)



- Cyan (0%)
- Magenta (13%)
- Yellow (13%)
- Black (15%)



- Cyan (15%)
- Magenta (26%)
- Yellow (26%)

# Brightness & Saturation Gradients


These gradients show how the CIELCh color 79, 10.985, 20.243 changes by changing the brightness by 10 percent. The first figure shows a shift by +10% for each color and the second figure -10%.

Similar to the brightness gradients but the following saturation gradients show a change of the CIELCh color 79, 10.985, 20.243 by changing the saturation by 10% instead.



 79, 10.985, 20.243

 79, 10.985, 20.243

 100, 10.985,  
20.243

 69, 10.985, 20.243

 99, 10.985, 20.243

 59, 10.985, 20.243

 49, 10.985, 20.243

 39, 10.985, 20.243

 29, 10.985, 20.243

 19, 10.985, 20.243

 9, 10.985, 20.243

 0, 10.985, 20.243

 79, 10.985, 20.243

 79, 10.985, 20.243

73, 20.006, 21.172

85, 2.624, 19.391

68, 29.682, 22.348

91, 5.104, 199.191

62, 39.935, 23.882

97, 12.253,  
198.697

57, 50.598, 25.884

97, 12.473,  
198.673

53, 61.395, 28.458

50, 71.942, 31.637

47, 81.653, 35.211

46, 89.302, 38.419

45, 92.876, 40.001

# Harmonies

# Complementary

The Complementary color scheme is a pair of colors which are on the opposite of each other on the color wheel.



79, 10.985, 20.243



85, 10.087, 198.759

# Rectangle

The Rectangle color scheme consists of four colors that form a rectangle on the color wheel.



79, 10.985, 20.243



79, 10.985, 70.243



79, 10.985, 200.243



79, 10.985, 250.243

# Sweetspot

The Sweet Spot groups the original color and five complimentary colors.



79, 10.983, 20.254



97, 3.616, 19.477



80, 18.694, 325.157



51, 2.578, 19.554



0, 0.000, 0.000



53, 0.007, 296.813



# Same Dimension

The Same Dimension uses a secret algorithm to generate beautiful new colors.



79, 10.983, 20.254



89, 15.171, 20.494



83, 9.406, 73.752



43, 4.638, 19.942



36, 78.233, 39.930



5, 23.838, 20.275





# Inverse Universe

The Inverse Universe completely reimagines the original color for something new.



85, 10.087, 198.759



97, 13.666, 198.606



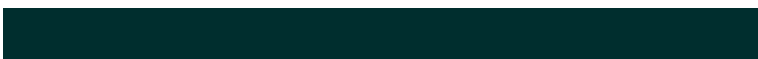
81, 9.099, 257.253



45, 4.370, 198.984



64, 37.524, 196.407



16, 15.071, 196.403



# Previews

## White Background



This preview shows how the CIELCh color 79, 10.985, 20.243 looks on a white background.

## Color Contrast Check

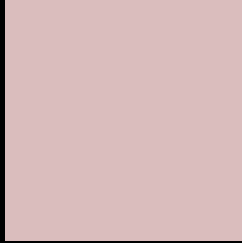
Large Text (above 18pt) WCAG AA × Fail

Any Text WCAG AA × Fail

Large Text (above 18pt) WCAG AAA × Fail

Any Text WCAG AAA × Fail

# Black Background



This preview shows how the CIE LCh color 79, 10.985, 20.243 looks on a black background.

## Color Contrast Check

Large Text (above 18pt) WCAG AA ✓ Pass

Any Text WCAG AA ✓ Pass

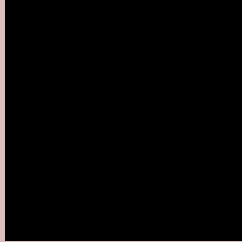
Large Text (above 18pt) WCAG AAA ✓ Pass

Any Text WCAG AAA ✓ Pass

If you want to check with other color combinations, try the [Color Contrast Checker](#).

# CIELCh 79, 10.985, 20.243

## Background



This preview shows how black text looks on a background with the CIELCh color 79, 10.985, 20.243.



This preview shows how white text looks on a background with the CIELCh color 79, 10.985, 20.243.

# Color Blindness Simulation

Color vision deficiency is a very complex topic, and I could not describe the different causes any better than Wikipedia does, so if you want to learn more, you should check out their [article about color blindness](#).

## Dichromacy



### Original Color


79, 10.985, 20.243

### Protanopia

79, 2.432, 60.286

### Deuteranopia

79, 10.599, 20.210



**Tritanopia**  
79, 14.602, 347.493



# Trichromacy



**Original Color**  
79, 10.985, 20.243

**Protanomaly**  
79, 5.339, 31.183

**Deuteranomaly**  
79, 10.599, 20.210

**Tritanomaly**  
79, 12.527, 357.990

# Monochromacy



**Original Color**  
79, 10.985, 20.243

**Achromatopsia**  
80, 0.010, 296.813

**Achromatomaly**  
80, 3.706, 19.549

# CSS Examples

## Text

The CSS property to change the color of the text to CIELCh 79, 10.985, 20.243 is called "color". The color property can be set on classes, ids or directly on the HTML element.

This example shows how text in the color `rgb(218, 189, 189)` looks like.

```
.text, #text, p{  
    color:rgb(218, 189, 189)  
}
```

If you want to add a text shadow in that color use the text-shadow property, you can generate a text shadow directly with our [CSS Text Shadow Generator](#).

Here you see how black text with a 4 pixel rgb(218, 189, 189) colored shadow looks like.

```
.shadow{ text-shadow: 4px 4px 2px rgb(218, 189, 189) }
```

## Border

The CSS property to change the border of an element to CIELCh 79, 10.985, 20.243 is called "border". The border property can be set on classes, ids or directly on the HTML element.

This example shows the color as border, it can be applied via the CSS property "border" or "border-color".

```
.border, #border, table{ border:4px solid rgb(218, 189, 189) }
```

If only the border color should be changed use the property `border-color`.

```
.border{ border-color:rgb(218, 189, 189) }
```

If you want to add a box shadow in that color use:

Here you see how a box with a 4 pixel `rgb(218, 189, 189)` colored shadow looks like.

```
.boxshadow{ -moz-box-shadow:4px 4px 4px  
4px rgb(218, 189, 189); -webkit-box-  
shadow:4px 4px 4px 4px rgb(218, 189, 189);  
box-shadow:4px 4px 4px 4px rgb(218, 189,  
189) }
```

# Background

The CSS property to change the background color of an element to CIELCh 79, 10.985, 20.243 is called "background". The background property can be set on classes, ids or directly on the HTML element.

```
.background, #background, body{  
background: rgb(218, 189, 189) }
```

If only the background color should be changed can be used:

```
.background{ background-color: rgb(218,  
189, 189) }
```

This example shows the color as background, it is applied via the CSS property "background".

To optimize and compress your CSS code, you can use our [online CSS compressor and optimizer](#) based on csstidy. If you want to create a linear or radial gradient as background or border, check our [CSS Gradient Generator](#).

Hey! You found this booklet interesting? Support Converting Colors with the new Membership Option!

The pro membership hides all ads, plus gives you double the colors in the color bucket, and more awesome pro features!

**[Learn more, Memberships starting at \\$2.50/m!](#)**

**Follow me  
on Twitter!**

@ConvertingColor