

Converting Colors

CIELCh(79, 11.011, 4.988)

Have a look what the booklet for
CIELCh(79, 11.011, 4.988) contains.

CIELCh(79, 10.832, 6.076)	3
<i>Conversions</i>	4
<i>Details</i>	6
<i>Harmonies</i>	11
<i>Previews</i>	20
<i>Color Blindness Simulation</i>	23
<i>CSS Examples</i>	26

Color

CIELCh(79, 10.832, 6.076)

Conversions

Conversions Part 1

Format	Color
Hex	D9BDC2
RGB	217, 189, 194
RGB Percent	85%, 74%, 76%
CMY	0.1497, 0.2595, 0.2399
CMYK	0.00, 0.13, 0.11, 0.15
HSL	349°, 27%, 80%
HSV	349°, 13%, 85%
XYZ	56.4370, 54.9284, 58.5605
YIQ	197.9420, 15.0830, 7.4910

Conversions

Conversions Part 2

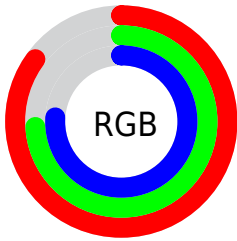
Format	Color
RYB	217, 189, 194
Decimal	14269890
CIELab	79.00, 10.77, 1.15
CIElCh	79, 10.832, 6.076
Yxy	54.9284, 0.3321, 0.3232
Android (android.graphics.Color)	4292459970 (0xFFD9BDC2)
YUV	197.9420, -1.9434, 16.7139
Hunter-Lab	74.1137, 6.2273, 5.0319

Details

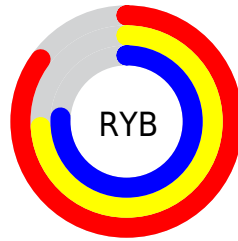
The CIELCh color **79, 10.832, 6.076** is a light color, and the websafe version is hex **CCCCCC**. A complement of this color would be **85, 10.256, 183.826**, and the grayscale version is **80, 0.010, 296.813**.

A 20% lighter version of the original color is **97, 4.374, 343.863**, and **59, 10.636, 8.292** is the 20% darker color. If you saturate the color by 10%, you get **73, 19.733, 7.260**, and if you desaturate by 10%, it is **85, 2.376, 4.934**.

Distribution



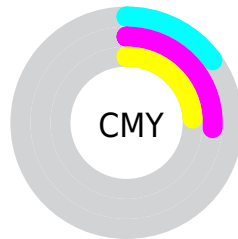
- Red (85%)
- Green (74%)
- Blue (76%)



- Red (85%)
- Yellow (74%)
- Blue (76%)



- Cyan (0%)
- Magenta (13%)
- Yellow (11%)
- Black (15%)



- Cyan (15%)
- Magenta (26%)
- Yellow (24%)

Brightness & Saturation Gradients

These gradients show how the CIELCh color 79, 10.832, 6.076 changes by changing the brightness by 10 percent. The first figure shows a shift by +10% for each color and the second figure -10%.

Similar to the brightness gradients but the following saturation gradients show a change of the CIELCh color 79, 10.832, 6.076 by changing the saturation by 10% instead.

 79, 10.832, 6.076  79, 10.832, 6.076

 100, 10.832, 6.076  69, 10.832, 6.076

 99, 10.832, 6.076  59, 10.832, 6.076

 49, 10.832, 6.076

 39, 10.832, 6.076

 29, 10.832, 6.076

 19, 10.832, 6.076

 9, 10.832, 6.076

 0, 10.832, 6.076

 79, 10.832, 6.076

 79, 10.832, 6.076

73, 19.733, 7.260

85, 2.376, 4.934

68, 29.017, 8.664

91, 5.609, 184.432

62, 38.536, 10.389

97, 13.138,
183.655

58, 48.054, 12.547

97, 12.830,
198.649

54, 57.242, 15.280

50, 65.739, 18.736

48, 73.266, 23.013

46, 79.742, 28.017

45, 83.880, 31.628

Harmonies

Complementary

The Complementary color scheme is a pair of colors which are on the opposite of each other on the color wheel.



79, 10.832, 6.076



85, 10.256, 183.826

Rectangle

The Rectangle color scheme consists of four colors that form a rectangle on the color wheel.



79, 10.832, 6.076



79, 10.832, 56.076



79, 10.832, 186.076



79, 10.832, 236.076

Sweetspot

The Sweet Spot groups the original color and five complimentary colors.



79, 10.830, 6.084



97, 3.735, 5.100



79, 17.115, 319.873



51, 2.660, 5.196



0, 0.000, 0.000



53, 0.007, 296.813

Same Dimension

The Same Dimension uses a secret algorithm to generate beautiful new colors.



79, 10.830, 6.084



90, 14.440, 6.331



81, 8.630, 52.645



43, 4.761, 5.710



36, 70.417, 30.755



5, 23.730, 12.554

Inverse Universe

The Inverse Universe completely reimagines the original color for something new.



79, 10.830, 6.084



90, 14.440, 6.331



82, 8.057, 234.798



43, 4.761, 5.710



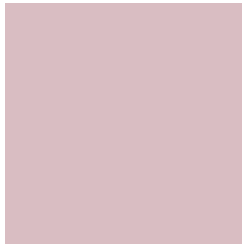
36, 70.417, 30.755



5, 23.730, 12.554

Previews

White Background



This preview shows how the CIELCh color 79, 10.832, 6.076 looks on a white background.

Color Contrast Check

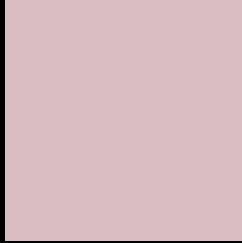
Large Text (above 18pt) WCAG AA × Fail

Any Text WCAG AA × Fail

Large Text (above 18pt) WCAG AAA × Fail

Any Text WCAG AAA × Fail

Black Background



This preview shows how the CIELCh color 79, 10.832, 6.076 looks on a black background.

Color Contrast Check

Large Text (above 18pt) WCAG AA ✓ Pass

Any Text WCAG AA ✓ Pass

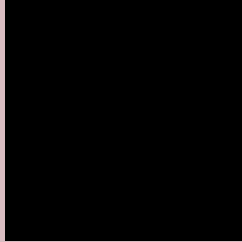
Large Text (above 18pt) WCAG AAA ✓ Pass

Any Text WCAG AAA ✓ Pass

If you want to check with other color combinations, try the [Color Contrast Checker](#).

CIELCh 79, 10.832, 6.076

Background



This preview shows how black text looks on a background with the CIELCh color 79, 10.832, 6.076.



This preview shows how white text looks on a background with the CIELCh color 79, 10.832, 6.076.

Color Blindness Simulation

Color vision deficiency is a very complex topic, and I could not describe the different causes any better than Wikipedia does, so if you want to learn more, you should check out their [article about color blindness](#).

Dichromacy



Original Color

79, 10.832, 6.076

Protanopia

79, 1.831, 343.593

Deuteranopia

79, 10.096, 4.938



Tritanopia
79, 13.379, 346.668

Trichromacy



Original Color
79, 10.832, 6.076

Protanomaly
79, 4.733, 359.955

Deuteranomaly
79, 10.463, 5.525

Tritanomaly
79, 12.603, 352.784

Monochromacy



Original Color
79, 10.832, 6.076

Achromatopsia
80, 0.010, 296.813

Achromatomaly
80, 3.743, 11.395

CSS Examples

Text

The CSS property to change the color of the text to CIELCh 79, 10.832, 6.076 is called "color". The color property can be set on classes, ids or directly on the HTML element.

This example shows how text in the color `rgb(217, 189, 194)` looks like.

```
.text, #text, p{  
    color:rgb(217, 189, 194)  
}
```

If you want to add a text shadow in that color use the text-shadow property, you can generate a text shadow directly with our [CSS Text Shadow Generator](#).

Here you see how black text with a 4 pixel rgb(217, 189, 194) colored shadow looks like.

```
.shadow{ text-shadow: 4px 4px 2px rgb(217, 189, 194) }
```

Border

The CSS property to change the border of an element to CIELCh 79, 10.832, 6.076 is called "border". The border property can be set on classes, ids or directly on the HTML element.

This example shows the color as border, it can be applied via the CSS property "border" or "border-color".

```
.border, #border, table{ border:4px solid rgb(217, 189, 194) }
```

If only the border color should be changed use the property `border-color`.

```
.border{ border-color:rgb(217, 189, 194) }
```

If you want to add a box shadow in that color use:

Here you see how a box with a 4 pixel `rgb(217, 189, 194)` colored shadow looks like.

```
.boxshadow{ -moz-box-shadow:4px 4px 4px  
4px rgb(217, 189, 194); -webkit-box-  
shadow:4px 4px 4px 4px rgb(217, 189, 194);  
box-shadow:4px 4px 4px 4px rgb(217, 189,  
194) }
```

Background

The CSS property to change the background color of an element to CIELCh 79, 10.832, 6.076 is called "background". The background property can be set on classes, ids or directly on the HTML element.

```
.background, #background, body{  
background: rgb(217, 189, 194) }
```

If only the background color should be changed can be used:

```
.background{ background-color: rgb(217,  
189, 194) }
```

This example shows the color as background, it is applied via the CSS property "background".

To optimize and compress your CSS code, you can use our [online CSS compressor and optimizer](#) based on csstidy. If you want to create a linear or radial gradient as background or border, check our [CSS Gradient Generator](#).

Hey! You found this booklet interesting? Support Converting Colors with the new Membership Option!

The pro membership hides all ads, plus gives you double the colors in the color bucket, and more awesome pro features!

[Learn more, Memberships starting at \\$2.50/m!](#)

**Follow me
on Twitter!**

@ConvertingColor