

Converting Colors

CIELCh(79, 11.018, 2.400)

Have a look what the booklet for
CIELCh(79, 11.018, 2.400) contains.

CIELCh(79, 10.957, 3.371)	3
<i>Conversions</i>	4
<i>Details</i>	6
<i>Harmonies</i>	11
<i>Previews</i>	20
<i>Color Blindness Simulation</i>	23
<i>CSS Examples</i>	26

Color

CIELCh(79, 10.957, 3.371)

Conversions

Conversions Part 1

Format	Color
Hex	D9BDC3
RGB	217, 189, 195
RGB Percent	85%, 74%, 76%
CMY	0.1500, 0.2598, 0.2363
CMYK	0.00, 0.13, 0.10, 0.15
HSL	347°, 27%, 80%
HSV	347°, 13%, 85%
XYZ	56.5042, 54.9284, 59.1047
YIQ	198.0560, 14.7620, 7.8020

Conversions

Conversions Part 2

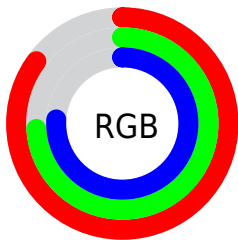
Format	Color
R_{YB}	217, 189, 195
Decimal	14269891
CIE _{Lab}	79.00, 10.94, 0.64
CIE _{LCh}	79, 10.957, 3.371
Yxy	54.9284, 0.3313, 0.3221
Android (android.graphics.Color)	4292459971 (0xFFD9BDC3)
YUV	198.0560, -1.5066, 16.6139
Hunter-Lab	74.1137, 6.3893, 4.5966

Details

The CIELCh color $79, 10.957, 3.371$ is a light color, and the websafe version is hex `CCCCCC`. A complement of this color would be $84, 10.431, 181.054$, and the grayscale version is $80, 0.010, 296.813$.

A 20% lighter version of the original color is $97, 5.042, 334.473$, and $59, 10.744, 5.344$ is the 20% darker color. If you saturate the color by 10%, you get $73, 19.910, 4.566$, and if you desaturate by 10%, it is $85, 2.411, 2.216$.

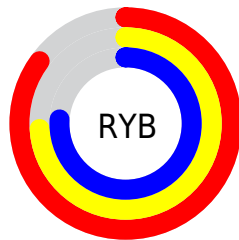
Distribution



Red (85%)

Green (74%)

Blue (76%)



Red (85%)

Yellow (74%)

Blue (76%)

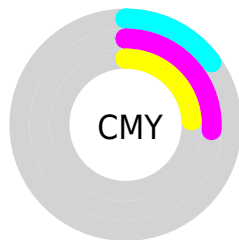


Cyan (0%)

Magenta (13%)

Yellow (10%)

Black (15%)



Cyan (15%)

Magenta (26%)


Yellow (24%)

Brightness & Saturation Gradients

These gradients show how the CIELCh color 79, 10.957, 3.371 changes by changing the brightness by 10 percent. The first figure shows a shift by +10% for each color and the second figure -10%.

Similar to the brightness gradients but the following saturation gradients show a change of the CIELCh color 79, 10.957, 3.371 by changing the saturation by 10% instead.

 79, 10.957, 3.371  79, 10.957, 3.371

 100, 10.957, 3.371  69, 10.957, 3.371

 99, 10.957, 3.371  59, 10.957, 3.371

 49, 10.957, 3.371

 39, 10.957, 3.371

 29, 10.957, 3.371

 19, 10.957, 3.371

 9, 10.957, 3.371

 0, 10.957, 3.371

 79, 10.957, 3.371  79, 10.957, 3.371

73, 19.910, 4.566

85, 2.411, 2.216

68, 29.195, 5.972

91, 5.693, 181.679

63, 38.652, 7.685

97, 13.363,
180.878

58, 48.027, 9.816

97, 12.854,
198.647

54, 56.974, 12.507

50, 65.114, 15.914

48, 72.165, 20.165

46, 78.089, 25.234

46, 81.883, 29.004

Harmonies

Complementary

The Complementary color scheme is a pair of colors which are on the opposite of each other on the color wheel.



79, 10.957, 3.371



84, 10.431, 181.054

Rectangle

The Rectangle color scheme consists of four colors that form a rectangle on the color wheel.



79, 10.957, 3.371



79, 10.957, 53.371



79, 10.957, 183.371



79, 10.957, 233.371

Sweetspot

The Sweet Spot groups the original color and five complimentary colors.



79, 10.955, 3.379



97, 3.786, 2.382



79, 16.959, 318.863



51, 2.696, 2.479



0, 0.000, 0.000



53, 0.007, 296.813

Same Dimension

The Same Dimension uses a secret algorithm to generate beautiful new colors.



79, 10.955, 3.379



90, 14.600, 3.628



81, 8.681, 48.702



42, 4.727, 2.996



36, 68.014, 28.017



5, 22.077, 10.242

Inverse Universe

The Inverse Universe completely reimagines the original color for something new.



79, 10.955, 3.379



90, 14.600, 3.628



83, 8.064, 230.481



42, 4.727, 2.996



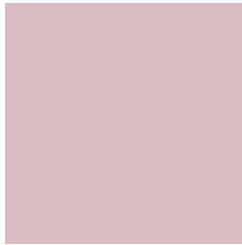
36, 68.014, 28.017



5, 22.077, 10.242

Previews

White Background



This preview shows how the CIELCh color 79, 10.957, 3.371 looks on a white background.

Color Contrast Check

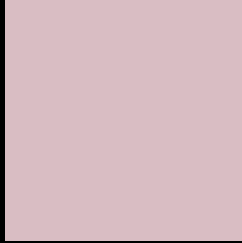
Large Text (above 18pt) WCAG AA × Fail

Any Text WCAG AA × Fail

Large Text (above 18pt) WCAG AAA × Fail

Any Text WCAG AAA × Fail

Black Background



This preview shows how the CIELCh color 79, 10.957, 3.371 looks on a black background.

Color Contrast Check

Large Text (above 18pt) WCAG AA ✓ Pass

Any Text WCAG AA ✓ Pass

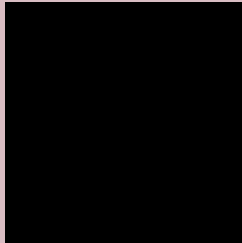
Large Text (above 18pt) WCAG AAA ✓ Pass

Any Text WCAG AAA ✓ Pass

If you want to check with other color combinations, try the [Color Contrast Checker](#).

CIELCh 79, 10.957, 3.371

Background



This preview shows how black text looks on a background with the CIELCh color 79, 10.957, 3.371.



This preview shows how white text looks on a background with the CIELCh color 79, 10.957, 3.371.

Color Blindness Simulation

Color vision deficiency is a very complex topic, and I could not describe the different causes any better than Wikipedia does, so if you want to learn more, you should check out their [article about color blindness](#).

Dichromacy



Original Color


79, 10.957, 3.371

Protanopia

79, 1.960, 324.394

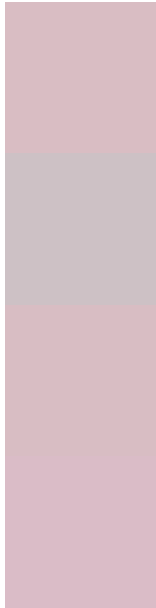
Deuteranopia

79, 10.234, 2.054



Tritanopia
79, 13.379, 346.668

Trichromacy



Original Color
79, 10.957, 3.371

Protanomaly
79, 4.937, 354.134

Deuteranomaly
79, 10.594, 2.733

Tritanomaly
79, 12.603, 352.784

Monochromacy



Original Color
79, 10.957, 3.371

Achromatopsia
80, 0.010, 296.813

Achromatomaly
80, 3.854, 3.557

CSS Examples

Text

The CSS property to change the color of the text to CIELCh 79, 10.957, 3.371 is called "color". The color property can be set on classes, ids or directly on the HTML element.

This example shows how text in the color `rgb(217, 189, 195)` looks like.

```
.text, #text, p{  
    color:rgb(217, 189, 195)  
}
```

If you want to add a text shadow in that color use the text-shadow property, you can generate a text shadow directly with our [CSS Text Shadow Generator](#).

Here you see how black text with a 4 pixel rgb(217, 189, 195) colored shadow looks like.

```
.shadow{ text-shadow: 4px 4px 2px rgb(217, 189, 195) }
```

Border

The CSS property to change the border of an element to CIELCh 79, 10.957, 3.371 is called "border". The border property can be set on classes, ids or directly on the HTML element.

This example shows the color as border, it can be applied via the CSS property "border" or "border-color".

```
.border, #border, table{ border:4px solid rgb(217, 189, 195) }
```

If only the border color should be changed use the property `border-color`.

```
.border{ border-color:rgb(217, 189, 195) }
```

If you want to add a box shadow in that color use:

Here you see how a box with a 4 pixel `rgb(217, 189, 195)` colored shadow looks like.

```
.boxshadow{ -moz-box-shadow:4px 4px 4px  
4px rgb(217, 189, 195); -webkit-box-  
shadow:4px 4px 4px 4px rgb(217, 189, 195);  
box-shadow:4px 4px 4px 4px rgb(217, 189,  
195) }
```

Background

The CSS property to change the background color of an element to CIELCh 79, 10.957, 3.371 is called "background". The background property can be set on classes, ids or directly on the HTML element.

```
.background, #background, body{  
background: rgb(217, 189, 195) }
```

If only the background color should be changed can be used:

```
.background{ background-color: rgb(217,  
189, 195) }
```

This example shows the color as background, it is applied via the CSS property "background".

To optimize and compress your CSS code, you can use our [online CSS compressor and optimizer](#) based on csstidy. If you want to create a linear or radial gradient as background or border, check our [CSS Gradient Generator](#).

Hey! You found this booklet interesting? Support Converting Colors with the new Membership Option!

The pro membership hides all ads, plus gives you double the colors in the color bucket, and more awesome pro features!

[Learn more, Memberships starting at \\$2.50/m!](#)

**Follow me
on Twitter!**

@ConvertingColor