

Converting Colors

CIELCh(79, 11.710, 351.849)

Have a look what the booklet for
CIELCh(79, 11.710, 351.849)
contains.

CIELCh(79, 11.363, 352.410)	3
<i>Conversions</i>	4
<i>Details</i>	6
<i>Harmonies</i>	12
<i>Previews</i>	21
<i>Color Blindness Simulation</i>	24
<i>CSS Examples</i>	27

Color

CIELCh(79, 11.363, 352.410)

Conversions

Conversions Part 1

Format	Color
Hex	D8BDC7
RGB	216, 189, 199
RGB Percent	85%, 74%, 78%
CMY	0.1541, 0.2600, 0.2208
CMYK	0.00, 0.13, 0.08, 0.15
HSL	338°, 26%, 79%
HSV	338°, 13%, 85%
XYZ	56.6355, 54.9284, 61.4669
YIQ	198.2130, 12.8820, 8.8340

Conversions

Conversions Part 2

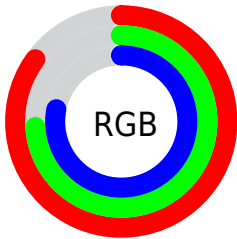
Format	Color
R _{YB}	216, 189, 199
Decimal	14204359
CIE _{Lab}	79.00, 11.26, -1.50
CIE _{LCh}	79, 11.363, 352.410
Yxy	54.9284, 0.3273, 0.3174
Android (android.graphics.Color)	4292394439 (0xFFD8BDC7)
YUV	198.2130, 0.3880, 15.5992
Hunter-Lab	74.1137, 6.7056, 2.7069

Details

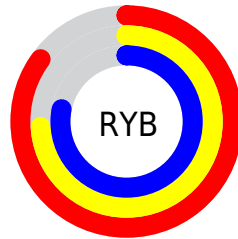
The CIELCh color **79, 11.363, 352.410** is a light color, and the websafe version is hex **CCCCCC**. A complement of this color would be **84, 11.050, 170.171**, and the grayscale version is **80, 0.010, 296.813**.

A 20% lighter version of the original color is **98, 6.227, 324.609**, and **59, 11.098, 353.374** is the 20% darker color. If you saturate the color by 10%, you get **73, 20.747, 353.525**, and if you desaturate by 10%, it is **85, 2.245, 351.288**.

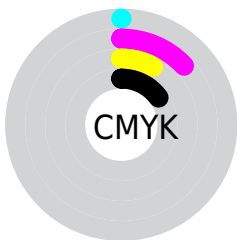
Distribution



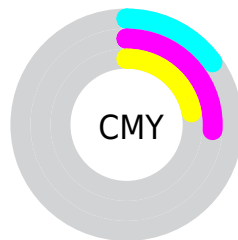
- Red (85%)
- Green (74%)
- Blue (78%)



- Red (85%)
- Yellow (74%)
- Blue (78%)



- Cyan (0%)
- Magenta (13%)
- Yellow (8%)
- Black (15%)





- Cyan (15%)
- Magenta (26%)
- Yellow (22%)


Brightness & Saturation Gradients


These gradients show how the CIELCh color 79, 11.363, 352.410 changes by changing the brightness by 10 percent. The first figure shows a shift by +10% for each color and the second figure -10%.


Similar to the brightness gradients but the following saturation gradients show a change of the CIELCh color 79, 11.363, 352.410 by changing the saturation by 10% instead.


 79, 11.363,
352.410


 79, 11.363,
352.410


 100, 11.363,
352.410


 69, 11.363,
352.410


 99, 11.363,
352.410

 59, 11.363,
352.410

 49, 11.363,
352.410

 39, 11.363,
352.410

 29, 11.363,
352.410

 19, 11.363,
352.410

 9, 11.363, 352.410

0, 11.363, 352.410

79, 11.363,
352.410

79, 11.363,
352.410

73, 20.747,
353.525

85, 2.245, 351.288

91, 6.536, 170.725

68, 30.281,
354.797

97, 14.960,
169.919

63, 39.752,
356.297

97, 13.299,
194.248

58, 48.846,
358.111

97, 13.190,
198.625

54, 57.146, 0.357

51, 64.188, 3.187

48, 69.600, 6.782

■ 47, 73.304, 11.293

■ 46, 75.380, 15.153

Harmonies

Complementary

The Complementary color scheme is a pair of colors which are on the opposite of each other on the color wheel.



79, 11.363, 352.410



84, 11.050, 170.171

Rectangle

The Rectangle color scheme consists of four colors that form a rectangle on the color wheel.



79, 11.363, 352.410



79, 11.363, 42.410



79, 11.363, 172.410



79, 11.363, 222.410

Sweetspot

The Sweet Spot groups the original color and five complimentary colors.



79, 11.361, 352.415



97, 4.102, 351.507



79, 15.688, 313.553



51, 2.919, 351.598



0, 0.000, 0.000



53, 0.007, 296.813

Same Dimension

The Same Dimension uses a secret algorithm to generate beautiful new colors.



79, 11.361, 352.415



90, 15.667, 352.695



80, 9.177, 30.508



42, 5.098, 352.092



36, 63.181, 14.191



5, 22.566, 2.415

Inverse Universe

The Inverse Universe completely reimagines the original color for something new.



79, 11.361, 352.415



90, 15.667, 352.695



83, 8.452, 210.268



42, 5.098, 352.092



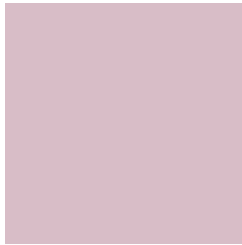
36, 63.181, 14.191



5, 22.566, 2.415

Previews

White Background



This preview shows how the CIELCh color 79, 11.363, 352.410 looks on a white background.

Color Contrast Check

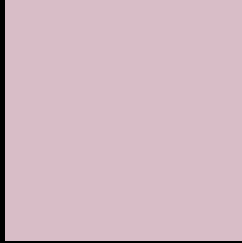
Large Text (above 18pt) WCAG AA × Fail

Any Text WCAG AA × Fail

Large Text (above 18pt) WCAG AAA × Fail

Any Text WCAG AAA × Fail

Black Background



This preview shows how the CIELCh color 79, 11.363, 352.410 looks on a black background.

Color Contrast Check

Large Text (above 18pt) WCAG AA ✓ Pass

Any Text WCAG AA ✓ Pass

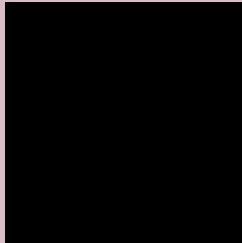
Large Text (above 18pt) WCAG AAA ✓ Pass

Any Text WCAG AAA ✓ Pass

If you want to check with other color combinations, try the [Color Contrast Checker](#).

CIELCh 79, 11.363, 352.410

Background



This preview shows how black text looks on a background with the CIELCh color 79, 11.363, 352.410.



This preview shows how white text looks on a background with the CIELCh color 79, 11.363, 352.410.

Color Blindness Simulation

Color vision deficiency is a very complex topic, and I could not describe the different causes any better than Wikipedia does, so if you want to learn more, you should check out their [article about color blindness](#).

Dichromacy



Original Color
79, 11.363, 352.410

Protanopia
79, 3.825, 301.454

Deuteranopia
79, 9.795, 350.900



Tritanopia
79, 13.077, 342.809

Trichromacy



Original Color
79, 11.363, 352.410

Protanomaly
79, 5.904, 333.504

Deuteranomaly
79, 10.123, 351.978

Tritanomaly
79, 12.477, 346.727

Monochromacy



Original Color
79, 11.363, 352.410

Achromatopsia
80, 0.010, 296.813

Achromatomaly
80, 3.697, 353.967

CSS Examples

Text

The CSS property to change the color of the text to CIELCh 79, 11.363, 352.410 is called "color". The color property can be set on classes, ids or directly on the HTML element.

This example shows how text in the color `rgb(216, 189, 199)` looks like.

```
.text, #text, p{  
    color:rgb(216, 189, 199)  
}
```

If you want to add a text shadow in that color use the text-shadow property, you can generate a text shadow directly with our [CSS Text Shadow Generator](#).

Here you see how black text with a 4 pixel rgb(216, 189, 199) colored shadow looks like.

```
.shadow{ text-shadow: 4px 4px 2px rgb(216, 189, 199) }
```

Border

The CSS property to change the border of an element to CIELCh 79, 11.363, 352.410 is called "border". The border property can be set on classes, ids or directly on the HTML element.

This example shows the color as border, it can be applied via the CSS property "border" or "border-color".

```
.border, #border, table{ border:4px solid rgb(216, 189, 199) }
```

If only the border color should be changed use the property `border-color`.

```
.border{ border-color:rgb(216, 189, 199) }
```

If you want to add a box shadow in that color use:

Here you see how a box with a 4 pixel `rgb(216, 189, 199)` colored shadow looks like.

```
.boxshadow{ -moz-box-shadow:4px 4px 4px  
4px rgb(216, 189, 199); -webkit-box-  
shadow:4px 4px 4px 4px rgb(216, 189, 199);  
box-shadow:4px 4px 4px 4px rgb(216, 189,  
199) }
```

Background

The CSS property to change the background color of an element to CIELCh 79, 11.363, 352.410 is called "background". The background property can be set on classes, ids or directly on the HTML element.

```
.background, #background, body{  
background: rgb(216, 189, 199) }
```

If only the background color should be changed can be used:

```
.background{ background-color: rgb(216,  
189, 199) }
```

This example shows the color as background, it is applied via the CSS property "background".

To optimize and compress your CSS code, you can use our [online CSS compressor and optimizer](#) based on csstidy. If you want to create a linear or radial gradient as background or border, check our [CSS Gradient Generator](#).

Hey! You found this booklet interesting? Support Converting Colors with the new Membership Option!

The pro membership hides all ads, plus gives you double the colors in the color bucket, and more awesome pro features!

[Learn more, Memberships starting at \\$2.50/m!](#)

**Follow me
on Twitter!**

@ConvertingColor