

Converting Colors

CIELCh(79, 12.085, 25.515)

Have a look what the booklet for
CIELCh(79, 12.085, 25.515) contains.

CIELCh(79, 12.259, 25.290)	3
<i>Conversions</i>	4
<i>Details</i>	6
<i>Harmonies</i>	11
<i>Previews</i>	20
<i>Color Blindness Simulation</i>	23
<i>CSS Examples</i>	26

Color

CIELCh(79, 12.259, 25.290)

Conversions

Conversions Part 1

Format	Color
Hex	DCBCBA
RGB	220, 188, 186
RGB Percent	86%, 74%, 73%
CMY	0.1360, 0.2615, 0.2693
CMYK	0.00, 0.15, 0.15, 0.14
HSL	4°, 33%, 80%
HSV	4°, 15%, 86%
XYZ	56.5631, 54.9284, 54.2524
YIQ	197.3400, 19.7140, 6.1620

Conversions

Conversions Part 2

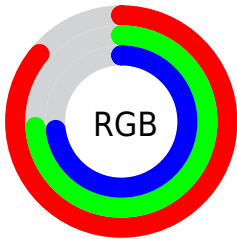
Format	Color
R _Y B	220, 188, 186
Decimal	14466234
CIE Lab	79.00, 11.08, 5.24
CIE LCh	79, 12.259, 25.290
Yxy	54.9284, 0.3413, 0.3314
Android (android.graphics.Color)	4292656314 (0xFFDCBCBA)
YUV	197.3400, -5.5906, 19.8728
Hunter-Lab	74.1137, 6.5312, 8.4784

Details

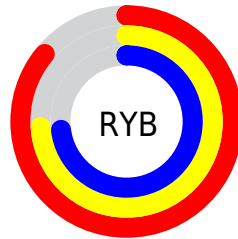
The CIELCh color **79, 12.259, 25.290** is a light color, and the websafe version is hex **FFCCCC**. A complement of this color would be **85, 11.066, 204.180**, and the grayscale version is **80, 0.010, 296.813**.

A 20% lighter version of the original color is **97, 4.038, 34.110**, and **59, 12.310, 25.841** is the 20% darker color. If you saturate the color by 10%, you get **73, 21.037, 26.018**, and if you desaturate by 10%, it is **85, 4.145, 24.695**.

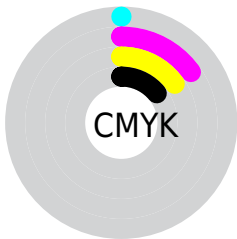
Distribution



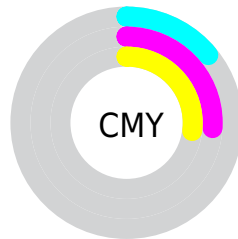
- Red (86%)
- Green (74%)
- Blue (73%)



- Red (86%)
- Yellow (74%)
- Blue (73%)



- Cyan (0%)
- Magenta (15%)
- Yellow (15%)
- Black (14%)



- Cyan (14%)
- Magenta (26%)
- Yellow (27%)

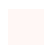
Brightness & Saturation Gradients

These gradients show how the CIELCh color 79, 12.259, 25.290 changes by changing the brightness by 10 percent. The first figure shows a shift by +10% for each color and the second figure -10%.

Similar to the brightness gradients but the following saturation gradients show a change of the CIELCh color 79, 12.259, 25.290 by changing the saturation by 10% instead.

 79, 12.259, 25.290

 79, 12.259, 25.290

 100, 12.259,
25.290

 69, 12.259, 25.290

 99, 12.259, 25.290

 59, 12.259, 25.290

 49, 12.259, 25.290

 39, 12.259, 25.290

 29, 12.259, 25.290

 19, 12.259, 25.290

 9, 12.259, 25.290

 0, 12.259, 25.290

 79, 12.259, 25.290

 79, 12.259, 25.290

73, 21.037, 26.018

85, 4.145, 24.695

68, 30.489, 26.971

91, 3.341, 204.648

63, 40.566, 28.241

96, 10.253,
204.263

58, 51.143, 29.914

98, 11.695,
198.725

54, 61.992, 32.057

51, 72.735, 34.653

48, 82.675, 37.442

47, 90.296, 39.634

46, 92.880, 40.508

Harmonies

Complementary

The Complementary color scheme is a pair of colors which are on the opposite of each other on the color wheel.



79, 12.259, 25.290



85, 11.066, 204.180

Rectangle

The Rectangle color scheme consists of four colors that form a rectangle on the color wheel.



79, 12.259, 25.290



79, 12.259, 75.290



79, 12.259, 205.290



79, 12.259, 255.290

Sweetspot

The Sweet Spot groups the original color and five complimentary colors.



79, 12.257, 25.300



97, 4.284, 24.666



79, 21.171, 326.663



51, 2.931, 24.716



0, 0.000, 0.000



53, 0.007, 296.813

Same Dimension

The Same Dimension uses a secret algorithm to generate beautiful new colors.



79, 12.257, 25.300



88, 17.245, 25.545



83, 11.446, 78.644



43, 4.382, 24.942



36, 77.428, 40.630



6, 22.917, 23.215

Inverse Universe

The Inverse Universe completely reimagines the original color for something new.



85, 11.066, 204.180



96, 15.159, 204.075



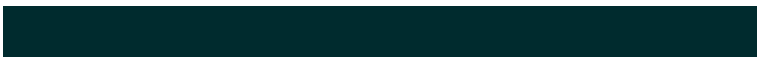
81, 11.139, 262.832



45, 4.123, 204.386



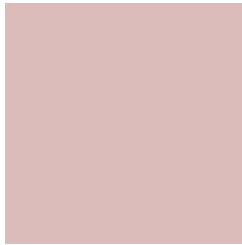
61, 34.766, 206.251



15, 14.128, 204.431

Previews

White Background



This preview shows how the CIELCh color 79, 12.259, 25.290 looks on a white background.

Color Contrast Check

Large Text (above 18pt) WCAG AA × Fail

Any Text WCAG AA × Fail

Large Text (above 18pt) WCAG AAA × Fail

Any Text WCAG AAA × Fail

Black Background



This preview shows how the CIE LCh color 79, 12.259, 25.290 looks on a black background.

Color Contrast Check

Large Text (above 18pt) WCAG AA ✓ Pass

Any Text WCAG AA ✓ Pass

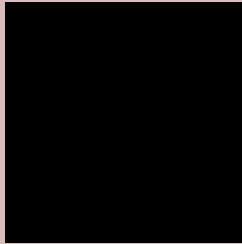
Large Text (above 18pt) WCAG AAA ✓ Pass

Any Text WCAG AAA ✓ Pass

If you want to check with other color combinations, try the [Color Contrast Checker](#).

CIELCh 79, 12.259, 25.290

Background



This preview shows how black text looks on a background with the CIELCh color 79, 12.259, 25.290.



This preview shows how white text looks on a background with the CIELCh color 79, 12.259, 25.290.

Color Blindness Simulation

Color vision deficiency is a very complex topic, and I could not describe the different causes any better than Wikipedia does, so if you want to learn more, you should check out their [article about color blindness](#).

Dichromacy



Original Color


79, 12.259, 25.290

Protanopia

79, 3.458, 69.601

Deuteranopia

79, 11.169, 28.404



Tritanopia
79, 15.566, 349.889

Trichromacy



Original Color
79, 12.259, 25.290

Protanomaly
79, 6.018, 40.396

Deuteranomaly
79, 11.555, 28.158

Tritanomaly
79, 13.598, 359.951

Monochromacy



Original Color
79, 12.259, 25.290

Achromatopsia
80, 0.010, 296.813

Achromatomaly
79, 4.460, 19.635

CSS Examples

Text

The CSS property to change the color of the text to CIELCh 79, 12.259, 25.290 is called "color". The color property can be set on classes, ids or directly on the HTML element.

This example shows how text in the color `rgb(220, 188, 186)` looks like.

```
.text, #text, p{  
    color:rgb(220, 188, 186)  
}
```

If you want to add a text shadow in that color use the text-shadow property, you can generate a text shadow directly with our [CSS Text Shadow Generator](#).

Here you see how black text with a 4 pixel rgb(220, 188, 186) colored shadow looks like.

```
.shadow{ text-shadow: 4px 4px 2px rgb(220, 188, 186) }
```

Border

The CSS property to change the border of an element to CIELCh 79, 12.259, 25.290 is called "border". The border property can be set on classes, ids or directly on the HTML element.

This example shows the color as border, it can be applied via the CSS property "border" or "border-color".

```
.border, #border, table{ border:4px solid rgb(220, 188, 186) }
```

If only the border color should be changed use the property `border-color`.

```
.border{ border-color:rgb(220, 188, 186) }
```

If you want to add a box shadow in that color use:

Here you see how a box with a 4 pixel `rgb(220, 188, 186)` colored shadow looks like.

```
.boxshadow{ -moz-box-shadow:4px 4px 4px  
4px rgb(220, 188, 186); -webkit-box-  
shadow:4px 4px 4px 4px rgb(220, 188, 186);  
box-shadow:4px 4px 4px 4px rgb(220, 188,  
186) }
```

Background

The CSS property to change the background color of an element to CIELCh 79, 12.259, 25.290 is called "background". The background property can be set on classes, ids or directly on the HTML element.

```
.background, #background, body{  
background: rgb(220, 188, 186) }
```

If only the background color should be changed can be used:

```
.background{ background-color: rgb(220,  
188, 186) }
```

This example shows the color as background, it is applied via the CSS property "background".

To optimize and compress your CSS code, you can use our [online CSS compressor and optimizer](#) based on csstidy. If you want to create a linear or radial gradient as background or border, check our [CSS Gradient Generator](#).

Hey! You found this booklet interesting? Support Converting Colors with the new Membership Option!

The pro membership hides all ads, plus gives you double the colors in the color bucket, and more awesome pro features!

[Learn more, Memberships starting at \\$2.50/m!](#)

**Follow me
on Twitter!**

@ConvertingColor