

Converting Colors

CIELCh(79, 12.106, 14.562)

Have a look what the booklet for
CIELCh(79, 12.106, 14.562) contains.

CIELCh(79, 12.158, 15.362)	3
<i>Conversions</i>	4
<i>Details</i>	6
<i>Harmonies</i>	11
<i>Previews</i>	20
<i>Color Blindness Simulation</i>	23
<i>CSS Examples</i>	26

Color

CIELCh(79, 12.158, 15.362)

Conversions

Conversions Part 1

Format	Color
Hex	DCBCBE
RGB	220, 188, 190
RGB Percent	86%, 74%, 75%
CMY	0.1371, 0.2625, 0.2547
CMYK	0.00, 0.15, 0.14, 0.14
HSL	356°, 31%, 80%
HSV	356°, 15%, 86%
XYZ	56.8216, 54.9284, 56.3484
YIQ	197.7960, 18.4300, 7.4060

Conversions

Conversions Part 2

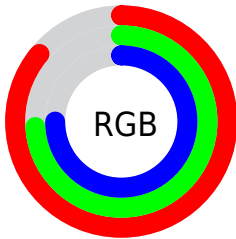
Format	Color
R _Y B	220, 188, 190
Decimal	14466238
CIE Lab	79.00, 11.72, 3.22
CIE LCh	79, 12.158, 15.362
Yxy	54.9284, 0.3380, 0.3268
Android (android.graphics.Color)	4292656318 (0xFFDCBCBE)
YUV	197.7960, -3.8434, 19.4729
Hunter-Lab	74.1137, 7.1536, 6.8016

Details

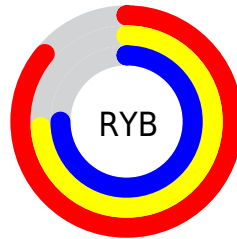
The CIELCh color **79, 12.158, 15.362** is a light color, and the websafe version is hex **FFCCCC**. A complement of this color would be **85, 11.192, 193.268**, and the grayscale version is **80, 0.010, 296.813**.

A 20% lighter version of the original color is **97, 4.037, 4.883**, and **59, 12.166, 15.363** is the 20% darker color. If you saturate the color by 10%, you get **73, 21.237, 16.451**, and if you desaturate by 10%, it is **85, 3.665, 14.408**.

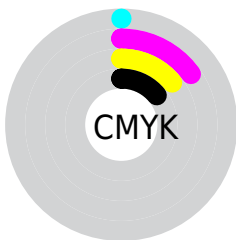
Distribution



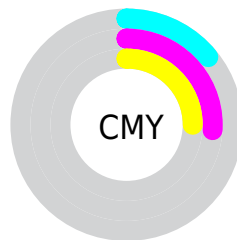
- Red (86%)
- Green (74%)
- Blue (75%)



- Red (86%)
- Yellow (74%)
- Blue (75%)



- Cyan (0%)
- Magenta (15%)
- Yellow (14%)
- Black (14%)



- Cyan (14%)
- Magenta (26%)
- Yellow (25%)

Brightness & Saturation Gradients

These gradients show how the CIELCh color 79, 12.158, 15.362 changes by changing the brightness by 10 percent. The first figure shows a shift by +10% for each color and the second figure -10%.

Similar to the brightness gradients but the following saturation gradients show a change of the CIELCh color 79, 12.158, 15.362 by changing the saturation by 10% instead.

79, 12.158, 15.362

79, 12.158, 15.362

100, 12.158,
15.362

69, 12.158, 15.362

99, 12.158, 15.362

59, 12.158, 15.362

49, 12.158, 15.362

39, 12.158, 15.362

29, 12.158, 15.362

19, 12.158, 15.362

9, 12.158, 15.362

0, 12.158, 15.362

79, 12.158, 15.362

79, 12.158, 15.362

73, 21.237, 16.451

85, 3.665, 14.408

68, 30.869, 17.796

91, 4.245, 194.008

62, 40.940, 19.507

97, 11.609,
193.344

57, 51.243, 21.702

98, 11.787,
198.719

53, 61.482, 24.505

50, 71.301, 27.992

48, 80.307, 32.065

46, 87.860, 36.196

46, 91.050, 37.964

Harmonies

Complementary

The Complementary color scheme is a pair of colors which are on the opposite of each other on the color wheel.



79, 12.158, 15.362



85, 11.192, 193.268

Rectangle

The Rectangle color scheme consists of four colors that form a rectangle on the color wheel.



79, 12.158, 15.362



79, 12.158, 65.362



79, 12.158, 195.362



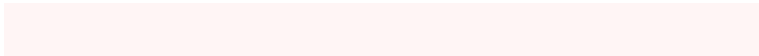
79, 12.158, 245.362

Sweetspot

The Sweet Spot groups the original color and five complimentary colors.



79, 12.156, 15.371



97, 3.632, 14.349



80, 20.195, 323.365



51, 2.588, 14.435



0, 0.000, 0.000



53, 0.007, 296.813

Same Dimension

The Same Dimension uses a secret algorithm to generate beautiful new colors.



79, 12.156, 15.371



88, 16.164, 15.632



82, 10.053, 66.223



43, 4.648, 14.886



36, 75.661, 37.383



5, 23.757, 17.579

Inverse Universe

The Inverse Universe completely reimagines the original color for something new.



79, 12.156, 15.371



88, 16.164, 15.632



82, 9.536, 249.747



43, 4.648, 14.886



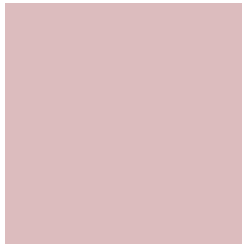
36, 75.661, 37.383



5, 23.757, 17.579

Previews

White Background



This preview shows how the CIELCh color 79, 12.158, 15.362 looks on a white background.

Color Contrast Check

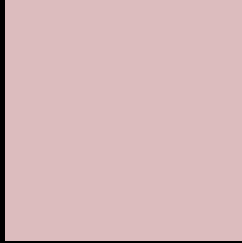
Large Text (above 18pt) WCAG AA × Fail

Any Text WCAG AA × Fail

Large Text (above 18pt) WCAG AAA × Fail

Any Text WCAG AAA × Fail

Black Background



This preview shows how the CIELCh color 79, 12.158, 15.362 looks on a black background.

Color Contrast Check

Large Text (above 18pt) WCAG AA ✓ Pass

Any Text WCAG AA ✓ Pass

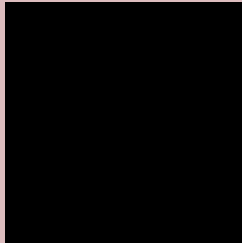
Large Text (above 18pt) WCAG AAA ✓ Pass

Any Text WCAG AAA ✓ Pass

If you want to check with other color combinations, try the [Color Contrast Checker](#).

CIELCh 79, 12.158, 15.362

Background



This preview shows how black text looks on a background with the CIELCh color 79, 12.158, 15.362.



This preview shows how white text looks on a background with the CIELCh color 79, 12.158, 15.362.

Color Blindness Simulation

Color vision deficiency is a very complex topic, and I could not describe the different causes any better than Wikipedia does, so if you want to learn more, you should check out their [article about color blindness](#).

Dichromacy



Original Color


79, 12.158, 15.362

Protanopia

79, 1.916, 35.382

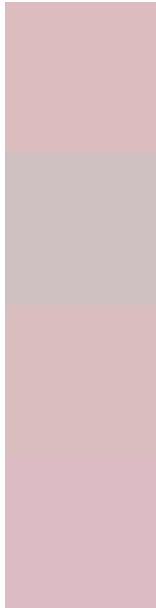
Deuteranopia

79, 10.591, 17.347



Tritanopia
79, 15.246, 349.123

Trichromacy



Original Color
79, 12.158, 15.362

Protanomaly
79, 5.620, 14.332

Deuteranomaly
79, 10.976, 17.482

Tritanomaly
79, 13.773, 357.863

Monochromacy



Original Color
79, 12.158, 15.362

Achromatopsia
80, 0.010, 296.813

Achromatomaly
79, 4.488, 12.842

CSS Examples

Text

The CSS property to change the color of the text to CIELCh 79, 12.158, 15.362 is called "color". The color property can be set on classes, ids or directly on the HTML element.

This example shows how text in the color `rgb(220, 188, 190)` looks like.

```
.text, #text, p{  
    color:rgb(220, 188, 190)  
}
```

If you want to add a text shadow in that color use the text-shadow property, you can generate a text shadow directly with our [CSS Text Shadow Generator](#).

Here you see how black text with a 4 pixel rgb(220, 188, 190) colored shadow looks like.

```
.shadow{ text-shadow: 4px 4px 2px rgb(220, 188, 190) }
```

Border

The CSS property to change the border of an element to CIELCh 79, 12.158, 15.362 is called "border". The border property can be set on classes, ids or directly on the HTML element.

This example shows the color as border, it can be applied via the CSS property "border" or "border-color".

```
.border, #border, table{ border:4px solid rgb(220, 188, 190) }
```

If only the border color should be changed use the property `border-color`.

```
.border{ border-color:rgb(220, 188, 190) }
```

If you want to add a box shadow in that color use:

Here you see how a box with a 4 pixel `rgb(220, 188, 190)` colored shadow looks like.

```
.boxshadow{ -moz-box-shadow:4px 4px 4px  
4px rgb(220, 188, 190); -webkit-box-  
shadow:4px 4px 4px 4px rgb(220, 188, 190);  
box-shadow:4px 4px 4px 4px rgb(220, 188,  
190) }
```

Background

The CSS property to change the background color of an element to CIELCh 79, 12.158, 15.362 is called "background". The background property can be set on classes, ids or directly on the HTML element.

```
.background, #background, body{  
background: rgb(220, 188, 190) }
```

If only the background color should be changed can be used:

```
.background{ background-color: rgb(220,  
188, 190) }
```

This example shows the color as background, it is applied via the CSS property "background".

To optimize and compress your CSS code, you can use our [online CSS compressor and optimizer](#) based on csstidy. If you want to create a linear or radial gradient as background or border, check our [CSS Gradient Generator](#).

Hey! You found this booklet interesting? Support Converting Colors with the new Membership Option!

The pro membership hides all ads, plus gives you double the colors in the color bucket, and more awesome pro features!

[Learn more, Memberships starting at \\$2.50/m!](#)

**Follow me
on Twitter!**

@ConvertingColor