

Converting Colors

CIELCh(79, 13.160, 352.870)

Have a look what the booklet for
CIELCh(79, 13.160, 352.870)
contains.

CIELCh(79, 12.937, 353.600)	3
<i>Conversions</i>	4
<i>Details</i>	6
<i>Harmonies</i>	12
<i>Previews</i>	21
<i>Color Blindness Simulation</i>	24
<i>CSS Examples</i>	27

Color

CIELCh(79, 12.937, 353.600)

Conversions

Conversions Part 1

Format	Color
Hex	DBBCC7
RGB	219, 188, 199
RGB Percent	86%, 74%, 78%
CMY	0.1426, 0.2641, 0.2210
CMYK	0.00, 0.14, 0.09, 0.14
HSL	339°, 30%, 80%
HSV	339°, 14%, 86%
XYZ	57.2812, 54.9284, 61.4013
YIQ	198.5230, 14.9450, 9.9930

Conversions

Conversions Part 2

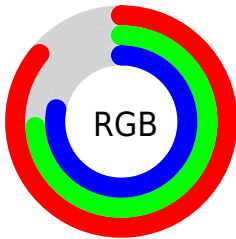
Format	Color
R _Y B	219, 188, 199
Decimal	14400711
CIE Lab	79.00, 12.86, -1.44
CIE LCh	79, 12.937, 353.600
Yxy	54.9284, 0.3299, 0.3164
Android (android.graphics.Color)	4292590791 (0xFFDBBCC7)
YUV	198.5230, 0.2352, 17.9583
Hunter-Lab	74.1137, 8.2607, 2.7593

Details

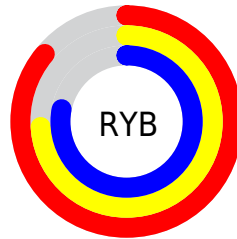
The CIELCh color $79, 12.937, 353.600$ is a light color, and the websafe version is hex `FFCCCC`. A complement of this color would be $85, 12.512, 170.999$, and the grayscale version is $80, 0.010, 296.813$.

A 20% lighter version of the original color is $97, 6.851, 324.635$, and $59, 12.772, 354.613$ is the 20% darker color. If you saturate the color by 10%, you get $73, 22.398, 354.752$, and if you desaturate by 10%, it is $85, 3.742, 352.525$.

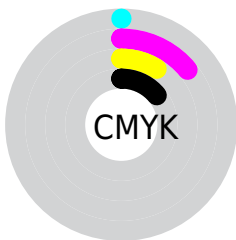
Distribution



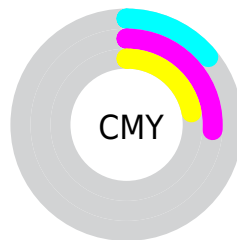
- Red (86%)
- Green (74%)
- Blue (78%)



- Red (86%)
- Yellow (74%)
- Blue (78%)



- Cyan (0%)
- Magenta (14%)
- Yellow (9%)
- Black (14%)



- Cyan (14%)
- Magenta (26%)
- Yellow (22%)


Brightness & Saturation Gradients

These gradients show how the CIELCh color 79, 12.937, 353.600 changes by changing the brightness by 10 percent. The first figure shows a shift by +10% for each color and the second figure -10%.


Similar to the brightness gradients but the following saturation gradients show a change of the CIELCh color 79, 12.937, 353.600 by changing the saturation by 10% instead.

 79, 12.937,
353.600

 79, 12.937,
353.600

 100, 12.937,
353.600

 69, 12.937,
353.600

 99, 12.937,
353.600

 59, 12.937,
353.600

 49, 12.937,
353.600

 39, 12.937,
353.600

 29, 12.937,
353.600

 19, 12.937,
353.600

 9, 12.937, 353.600

0, 12.937, 353.600

79, 12.937,
353.600

79, 12.937,
353.600

73, 22.398,
354.752

85, 3.742, 352.525

68, 31.999,
356.080

91, 5.110, 171.880

63, 41.513,
357.657

97, 13.596,
171.038

58, 50.609,
359.579

98, 12.243,
198.688

54, 58.858, 1.971

51, 65.802, 4.998

48, 71.111, 8.839

■ 47, 74.788, 13.619

■ 46, 76.547, 16.696

Harmonies

Complementary

The Complementary color scheme is a pair of colors which are on the opposite of each other on the color wheel.



79, 12.937, 353.600



85, 12.512, 170.999

Rectangle

The Rectangle color scheme consists of four colors that form a rectangle on the color wheel.



79, 12.937, 353.600



79, 12.937, 43.600



79, 12.937, 173.600



79, 12.937, 223.600

Sweetspot

The Sweet Spot groups the original color and five complimentary colors.



79, 12.935, 353.605



97, 4.064, 352.508



79, 18.069, 314.174



51, 2.892, 352.600



0, 0.000, 0.000



53, 0.007, 296.813

Same Dimension

The Same Dimension uses a secret algorithm to generate beautiful new colors.



79, 12.935, 353.605



89, 17.665, 353.931



80, 10.444, 32.209



43, 5.152, 353.102



37, 64.175, 15.737



6, 24.078, 3.927

Inverse Universe

The Inverse Universe completely reimagines the original color for something new.



79, 12.935, 353.605



89, 17.665, 353.931



84, 9.509, 212.114



43, 5.152, 353.102



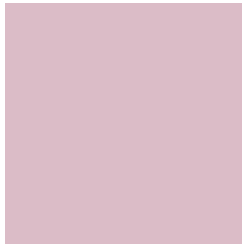
37, 64.175, 15.737



6, 24.078, 3.927

Previews

White Background



This preview shows how the CIELCh color 79, 12.937, 353.600 looks on a white background.

Color Contrast Check

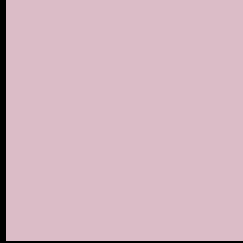
Large Text (above 18pt) WCAG AA × Fail

Any Text WCAG AA × Fail

Large Text (above 18pt) WCAG AAA × Fail

Any Text WCAG AAA × Fail

Black Background



This preview shows how the CIELCh color 79, 12.937, 353.600 looks on a black background.

Color Contrast Check

Large Text (above 18pt) WCAG AA ✓ Pass

Any Text WCAG AA ✓ Pass

Large Text (above 18pt) WCAG AAA ✓ Pass

Any Text WCAG AAA ✓ Pass

If you want to check with other color combinations, try the [Color Contrast Checker](#).

CIELCh 79, 12.937, 353.600

Background



This preview shows how black text looks on a background with the CIELCh color 79, 12.937, 353.600.



This preview shows how white text looks on a background with the CIELCh color 79, 12.937, 353.600.

Color Blindness Simulation

Color vision deficiency is a very complex topic, and I could not describe the different causes any better than Wikipedia does, so if you want to learn more, you should check out their [article about color blindness](#).

Dichromacy



Original Color
79, 12.937, 353.600

Protanopia
79, 4.350, 300.148

Deuteranopia
79, 9.556, 353.702



Tritanopia
79, 14.292, 346.632

Trichromacy



Original Color
79, 12.937, 353.600

Protanomaly
79, 6.803, 334.979

Deuteranomaly
79, 10.799, 353.950

Tritanomaly
79, 14.016, 348.461

Monochromacy



Original Color
79, 12.937, 353.600

Achromatopsia
80, 0.010, 296.813

Achromatomaly
79, 4.932, 354.131

CSS Examples

Text

The CSS property to change the color of the text to CIELCh 79, 12.937, 353.600 is called "color". The color property can be set on classes, ids or directly on the HTML element.

This example shows how text in the color `rgb(219, 188, 199)` looks like.

```
.text, #text, p{  
    color:rgb(219, 188, 199)  
}
```

If you want to add a text shadow in that color use the text-shadow property, you can generate a text shadow directly with our [CSS Text Shadow Generator](#).

Here you see how black text with a 4 pixel rgb(219, 188, 199) colored shadow looks like.

```
.shadow{ text-shadow: 4px 4px 2px rgb(219, 188, 199) }
```

Border

The CSS property to change the border of an element to CIELCh 79, 12.937, 353.600 is called "border". The border property can be set on classes, ids or directly on the HTML element.

This example shows the color as border, it can be applied via the CSS property "border" or "border-color".

```
.border, #border, table{ border:4px solid rgb(219, 188, 199) }
```

If only the border color should be changed use the property `border-color`.

```
.border{ border-color:rgb(219, 188, 199) }
```

If you want to add a box shadow in that color use:

Here you see how a box with a 4 pixel `rgb(219, 188, 199)` colored shadow looks like.

```
.boxshadow{ -moz-box-shadow:4px 4px 4px  
4px rgb(219, 188, 199); -webkit-box-  
shadow:4px 4px 4px 4px rgb(219, 188, 199);  
box-shadow:4px 4px 4px 4px rgb(219, 188,  
199) }
```

Background

The CSS property to change the background color of an element to CIELCh 79, 12.937, 353.600 is called "background". The background property can be set on classes, ids or directly on the HTML element.

```
.background, #background, body{  
background: rgb(219, 188, 199) }
```

If only the background color should be changed can be used:

```
.background{ background-color: rgb(219,  
188, 199) }
```

This example shows the color as background, it is applied via the CSS property "background".

To optimize and compress your CSS code, you can use our [online CSS compressor and optimizer](#) based on csstidy. If you want to create a linear or radial gradient as background or border, check our [CSS Gradient Generator](#).

Hey! You found this booklet interesting? Support Converting Colors with the new Membership Option!

The pro membership hides all ads, plus gives you double the colors in the color bucket, and more awesome pro features!

[Learn more, Memberships starting at \\$2.50/m!](#)

**Follow me
on Twitter!**

@ConvertingColor