

Converting Colors

CIELCh(79, 13.426, 2.091)

Have a look what the booklet for
CIELCh(79, 13.426, 2.091) contains.

CIELCh(79, 13.441, 2.092)	3
<i>Conversions</i>	4
<i>Details</i>	6
<i>Harmonies</i>	11
<i>Previews</i>	20
<i>Color Blindness Simulation</i>	23
<i>CSS Examples</i>	26

Color

CIELCh(79, 13.441, 2.092)

Conversions

Conversions Part 1

Format	Color
Hex	DDBBC3
RGB	221, 187, 195
RGB Percent	87%, 73%, 76%
CMY	0.1328, 0.2662, 0.2348
CMYK	0.00, 0.15, 0.12, 0.13
HSL	346°, 33%, 80%
HSV	346°, 15%, 87%
XYZ	57.5158, 54.9284, 59.2718
YIQ	198.0780, 17.6960, 9.6960

Conversions

Conversions Part 2

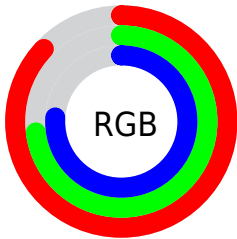
Format	Color
R _Y B	221, 187, 195
Decimal	14531523
CIE Lab	79.00, 13.43, 0.49
CIE LCh	79, 13.441, 2.092
Yxy	54.9284, 0.3349, 0.3199
Android (android.graphics.Color)	4292721603 (0xFFDDBBC3)
YUV	198.0780, -1.5175, 20.1026
Hunter-Lab	74.1137, 8.8256, 4.4629

Details

The CIELCh color $79, 13.441, 2.092$ is a light color, and the websafe version is hex `FFCCCC`. A complement of this color would be $86, 12.719, 179.224$, and the grayscale version is $80, 0.010, 296.813$.

A 20% lighter version of the original color is $97, 6.275, 332.584$, and $59, 13.377, 3.731$ is the 20% darker color. If you saturate the color by 10%, you get $73, 22.670, 3.333$, and if you desaturate by 10%, it is $85, 4.587, 0.986$.

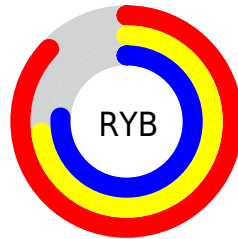
Distribution



Red (87%)

Green (73%)

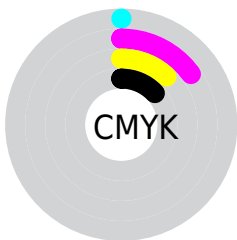
Blue (76%)



Red (87%)

Yellow (73%)

Blue (76%)

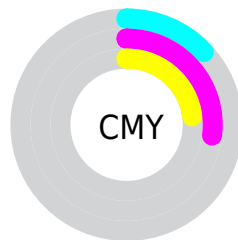


Cyan (0%)

Magenta (15%)

Yellow (12%)

Black (13%)



Cyan (13%)

Magenta (27%)

Yellow (23%)

Brightness & Saturation Gradients

These gradients show how the CIELCh color 79, 13.441, 2.092 changes by changing the brightness by 10 percent. The first figure shows a shift by +10% for each color and the second figure -10%.

Similar to the brightness gradients but the following saturation gradients show a change of the CIELCh color 79, 13.441, 2.092 by changing the saturation by 10% instead.

79, 13.441, 2.092

79, 13.441, 2.092

100, 13.441, 2.092

69, 13.441, 2.092

99, 13.441, 2.092

59, 13.441, 2.092

49, 13.441, 2.092

39, 13.441, 2.092

29, 13.441, 2.092

19, 13.441, 2.092

9, 13.441, 2.092

0, 13.441, 2.092

79, 13.441, 2.092

79, 13.441, 2.092

73, 22.670, 3.333

85, 4.587, 0.986

68, 32.175, 4.801

91, 3.837, 180.351

63, 41.760, 6.594

97, 11.829,
179.473

58, 51.131, 8.827

98, 11.438,
198.742

54, 59.908, 11.649

51, 67.703, 15.223

48, 74.277, 19.669

47, 79.689, 24.934

46, 82.055, 27.419

Harmonies

Complementary

The Complementary color scheme is a pair of colors which are on the opposite of each other on the color wheel.



79, 13.441, 2.092



86, 12.719, 179.224

Rectangle

The Rectangle color scheme consists of four colors that form a rectangle on the color wheel.



79, 13.441, 2.092



79, 13.441, 52.092



79, 13.441, 182.092



79, 13.441, 232.092

Sweetspot

The Sweet Spot groups the original color and five complimentary colors.



79, 13.439, 2.098



97, 4.786, 0.946



79, 20.386, 317.947



51, 3.271, 1.030



0, 0.000, 0.000



53, 0.007, 296.813

Same Dimension

The Same Dimension uses a secret algorithm to generate beautiful new colors.



79, 13.439, 2.098



88, 17.774, 2.421



81, 10.724, 44.744



43, 4.859, 1.438



36, 67.912, 26.407



5, 23.778, 10.092

Inverse Universe

The Inverse Universe completely reimagines the original color for something new.



79, 13.439, 2.098



88, 17.774, 2.421



84, 9.761, 226.362



43, 4.859, 1.438



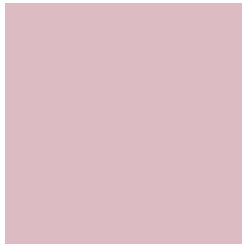
36, 67.912, 26.407



5, 23.778, 10.092

Previews

White Background



This preview shows how the CIELCh color 79, 13.441, 2.092 looks on a white background.

Color Contrast Check

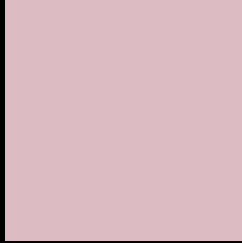
Large Text (above 18pt) WCAG AA × Fail

Any Text WCAG AA × Fail

Large Text (above 18pt) WCAG AAA × Fail

Any Text WCAG AAA × Fail

Black Background



This preview shows how the CIELCh color 79, 13.441, 2.092 looks on a black background.

Color Contrast Check

Large Text (above 18pt) WCAG AA ✓ Pass

Any Text WCAG AA ✓ Pass

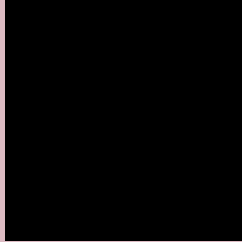
Large Text (above 18pt) WCAG AAA ✓ Pass

Any Text WCAG AAA ✓ Pass

If you want to check with other color combinations, try the [Color Contrast Checker](#).

CIELCh 79, 13.441, 2.092

Background



This preview shows how black text looks on a background with the CIELCh color 79, 13.441, 2.092.



This preview shows how white text looks on a background with the CIELCh color 79, 13.441, 2.092.

Color Blindness Simulation

Color vision deficiency is a very complex topic, and I could not describe the different causes any better than Wikipedia does, so if you want to learn more, you should check out their [article about color blindness](#).

Dichromacy



Original Color


79, 13.441, 2.092

Protanopia

79, 2.905, 312.534

Deuteranopia

79, 10.234, 2.054



Tritanopia
79, 15.566, 349.889

Trichromacy



Original Color
79, 13.441, 2.092

Protanomaly
79, 6.101, 348.212

Deuteranomaly
79, 11.476, 1.415

Tritanomaly
79, 15.087, 353.414

Monochromacy



Original Color
79, 13.441, 2.092

Achromatopsia
80, 0.010, 296.813

Achromatomaly
79, 4.729, 359.952

CSS Examples

Text

The CSS property to change the color of the text to CIELCh 79, 13.441, 2.092 is called "color". The color property can be set on classes, ids or directly on the HTML element.

This example shows how text in the color `rgb(221, 187, 195)` looks like.

```
.text, #text, p{  
    color:rgb(221, 187, 195)  
}
```

If you want to add a text shadow in that color use the text-shadow property, you can generate a text shadow directly with our [CSS Text Shadow Generator](#).

Here you see how black text with a 4 pixel rgb(221, 187, 195) colored shadow looks like.

```
.shadow{ text-shadow: 4px 4px 2px rgb(221, 187, 195) }
```

Border

The CSS property to change the border of an element to CIELCh 79, 13.441, 2.092 is called "border". The border property can be set on classes, ids or directly on the HTML element.

This example shows the color as border, it can be applied via the CSS property "border" or "border-color".

```
.border, #border, table{ border:4px solid rgb(221, 187, 195) }
```

If only the border color should be changed use the property `border-color`.

```
.border{ border-color:rgb(221, 187, 195) }
```

If you want to add a box shadow in that color use:

Here you see how a box with a 4 pixel `rgb(221, 187, 195)` colored shadow looks like.

```
.boxshadow{ -moz-box-shadow:4px 4px 4px 4px rgb(221, 187, 195); -webkit-box-shadow:4px 4px 4px 4px rgb(221, 187, 195); box-shadow:4px 4px 4px 4px rgb(221, 187, 195) }
```

Background

The CSS property to change the background color of an element to CIELCh 79, 13.441, 2.092 is called "background". The background property can be set on classes, ids or directly on the HTML element.

```
.background, #background, body{  
background: rgb(221, 187, 195) }
```

If only the background color should be changed can be used:

```
.background{ background-color: rgb(221,  
187, 195) }
```

This example shows the color as background, it is applied via the CSS property "background".

To optimize and compress your CSS code, you can use our [online CSS compressor and optimizer](#) based on csstidy. If you want to create a linear or radial gradient as background or border, check our [CSS Gradient Generator](#).

Hey! You found this booklet interesting? Support Converting Colors with the new Membership Option!

The pro membership hides all ads, plus gives you double the colors in the color bucket, and more awesome pro features!

[Learn more, Memberships starting at \\$2.50/m!](#)

**Follow me
on Twitter!**

@ConvertingColor