

Converting Colors

CIELCh(79, 13.801, 65.762)

Have a look what the booklet for
CIELCh(79, 13.801, 65.762) contains.

CIELCh(79, 13.709, 63.977)	3
<i>Conversions</i>	4
<i>Details</i>	6
<i>Harmonies</i>	11
<i>Previews</i>	20
<i>Color Blindness Simulation</i>	23
<i>CSS Examples</i>	26

Color

CIELCh(79, 13.709, 63.977)

Conversions

Conversions Part 1

Format	Color
Hex	D8BFAD
RGB	216, 191, 173
RGB Percent	85%, 75%, 68%
CMY	0.1526, 0.2506, 0.3213
CMYK	0.00, 0.12, 0.20, 0.15
HSL	25°, 36%, 76%
HSV	25°, 20%, 85%
XYZ	54.5423, 54.9284, 47.3025
YIQ	196.4230, 20.6780, -0.2980

Conversions

Conversions Part 2

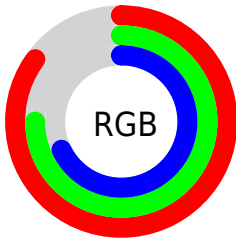
Format	Color
R _Y B	216, 204, 173
Decimal	14204845
CIE Lab	79.00, 6.01, 12.32
CIE LCh	79, 13.709, 63.977
Yxy	54.9284, 0.3479, 0.3504
Android (android.graphics.Color)	4292394925 (0xFFD8BFAD)
YUV	196.4230, -11.5475, 17.1690
Hunter-Lab	74.1137, 1.6640, 14.0382

Details

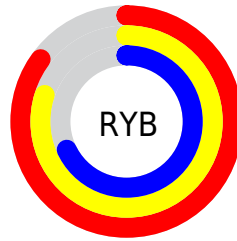
The CIELCh color **79, 13.709, 63.977** is a light color, and the websafe version is hex **CCCCCC**. A complement of this color would be **79, 12.659, 248.739**, and the grayscale version is **79, 0.010, 296.813**.

A 20% lighter version of the original color is **97, 10.082, 92.646**, and **59, 13.675, 64.234** is the 20% darker color. If you saturate the color by 10%, you get **75, 21.242, 62.952**, and if you desaturate by 10%, it is **83, 6.617, 65.016**.

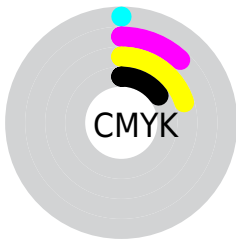
Distribution



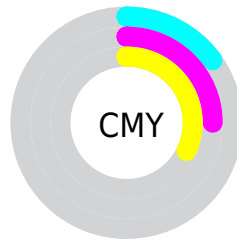
- Red (85%)
- Green (75%)
- Blue (68%)



- Red (85%)
- Yellow (80%)
- Blue (68%)



- Cyan (0%)
- Magenta (12%)
- Yellow (20%)
- Black (15%)



- Cyan (15%)
- Magenta (25%)
- Yellow (32%)


Brightness & Saturation Gradients

These gradients show how the CIELCh color 79, 13.709, 63.977 changes by changing the brightness by 10 percent. The first figure shows a shift by +10% for each color and the second figure -10%.

Similar to the brightness gradients but the following saturation gradients show a change of the CIELCh color 79, 13.709, 63.977 by changing the saturation by 10% instead.

 79, 13.709, 63.977

 79, 13.709, 63.977

 100, 13.709,
63.977

 69, 13.709, 63.977

 99, 13.709, 63.977

 59, 13.709, 63.977

 49, 13.709, 63.977

 39, 13.709, 63.977

 29, 13.709, 63.977

 19, 13.709, 63.977

 9, 13.709, 63.977

 0, 13.709, 63.977

 79, 13.709, 63.977

 79, 13.709, 63.977

75, 21.242, 62.952

83, 6.617, 65.016

72, 29.242, 61.937

86, 0.071, 252.595

68, 37.705, 60.951

90, 6.396, 247.285

65, 46.571, 59.983

94, 10.866,
239.550

62, 55.657, 58.986

97, 12.690,
201.233

59, 64.545, 57.833

56, 72.390, 56.243

97, 13.065,
198.633

54, 78.389, 54.010

54, 78.448, 53.991

Harmonies

Complementary

The Complementary color scheme is a pair of colors which are on the opposite of each other on the color wheel.



79, 13.709, 63.977



79, 12.659, 248.739

Rectangle

The Rectangle color scheme consists of four colors that form a rectangle on the color wheel.



79, 13.709, 63.977



79, 13.709, 113.977



79, 13.709, 243.977



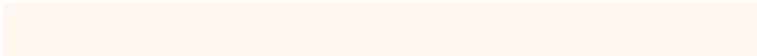
79, 13.709, 293.977

Sweetspot

The Sweet Spot groups the original color and five complimentary colors.



79, 13.709, 63.988



97, 4.533, 65.382



75, 20.858, 341.002



52, 3.013, 65.323



0, 0.000, 0.000



53, 0.007, 296.813

Same Dimension

The Same Dimension uses a secret algorithm to generate beautiful new colors.



79, 13.709, 63.988



90, 19.162, 63.539



84, 20.640, 104.527



43, 3.761, 65.065



43, 65.523, 54.637



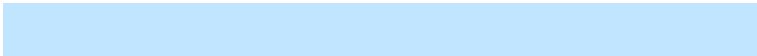
9, 17.273, 49.739

Inverse Universe

The Inverse Universe completely reimagines the original color for something new.



79, 12.659, 248.739



89, 17.351, 249.430



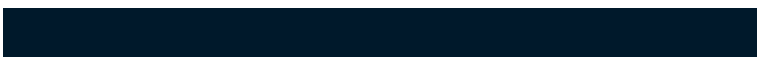
73, 21.432, 288.977



43, 3.633, 247.308



41, 45.113, 274.540



8, 15.241, 263.396

Previews

White Background



This preview shows how the CIELCh color 79, 13.709, 63.977 looks on a white background.

Color Contrast Check

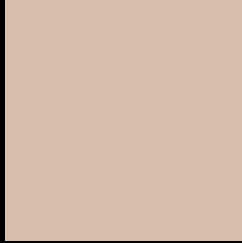
Large Text (above 18pt) WCAG AA × Fail

Any Text WCAG AA × Fail

Large Text (above 18pt) WCAG AAA × Fail

Any Text WCAG AAA × Fail

Black Background



This preview shows how the CIELCh color 79, 13.709, 63.977 looks on a black background.

Color Contrast Check

Large Text (above 18pt) WCAG AA ✓ Pass

Any Text WCAG AA ✓ Pass

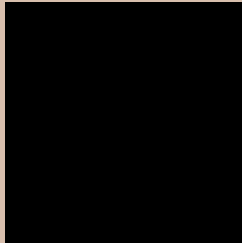
Large Text (above 18pt) WCAG AAA ✓ Pass

Any Text WCAG AAA ✓ Pass

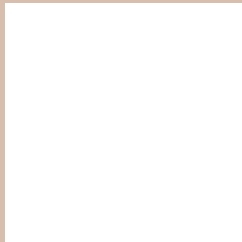
If you want to check with other color combinations, try the [Color Contrast Checker](#).

CIELCh 79, 13.709, 63.977

Background



This preview shows how black text looks on a background with the CIELCh color 79, 13.709, 63.977.

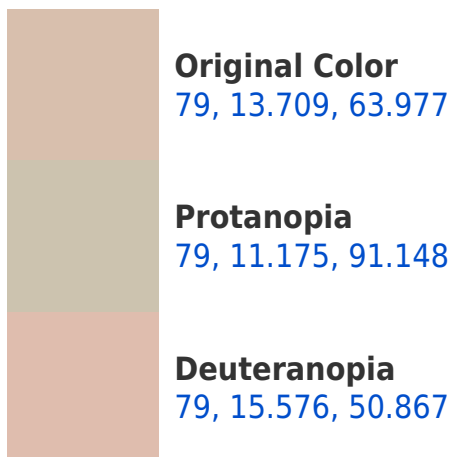



This preview shows how white text looks on a background with the CIELCh color 79, 13.709, 63.977.

Color Blindness Simulation

Color vision deficiency is a very complex topic, and I could not describe the different causes any better than Wikipedia does, so if you want to learn more, you should check out their [article about color blindness](#).

Dichromacy





Tritanopia
79, 14.602, 347.493

Trichromacy



Original Color
79, 13.709, 63.977

Protanomaly
79, 11.936, 82.220

Deuteranomaly
79, 14.533, 55.736

Tritanomaly
79, 11.810, 12.598

Monochromacy



Original Color
79, 13.709, 63.977

Achromatopsia
80, 0.010, 296.813

Achromatomaly
79, 5.009, 67.411

CSS Examples

Text

The CSS property to change the color of the text to CIELCh 79, 13.709, 63.977 is called "color". The color property can be set on classes, ids or directly on the HTML element.

This example shows how text in the color `rgb(216, 191, 173)` looks like.

```
.text, #text, p{  
    color:rgb(216, 191, 173)  
}
```

If you want to add a text shadow in that color use the text-shadow property, you can generate a text shadow directly with our [CSS Text Shadow Generator](#).

Here you see how black text with a 4 pixel rgb(216, 191, 173) colored shadow looks like.

```
.shadow{ text-shadow: 4px 4px 2px rgb(216, 191, 173) }
```

Border

The CSS property to change the border of an element to CIELCh 79, 13.709, 63.977 is called "border". The border property can be set on classes, ids or directly on the HTML element.

This example shows the color as border, it can be applied via the CSS property "border" or "border-color".

```
.border, #border, table{ border:4px solid rgb(216, 191, 173) }
```

If only the border color should be changed use the property `border-color`.

```
.border{ border-color:rgb(216, 191, 173) }
```

If you want to add a box shadow in that color use:

Here you see how a box with a 4 pixel `rgb(216, 191, 173)` colored shadow looks like.

```
.boxshadow{ -moz-box-shadow:4px 4px 4px  
4px rgb(216, 191, 173); -webkit-box-  
shadow:4px 4px 4px 4px rgb(216, 191, 173);  
box-shadow:4px 4px 4px 4px rgb(216, 191,  
173) }
```

Background

The CSS property to change the background color of an element to CIELCh 79, 13.709, 63.977 is called "background". The background property can be set on classes, ids or directly on the HTML element.

```
.background, #background, body{  
background: rgb(216, 191, 173) }
```

If only the background color should be changed can be used:

```
.background{ background-color: rgb(216,  
191, 173) }
```

This example shows the color as background, it is applied via the CSS property "background".

To optimize and compress your CSS code, you can use our [online CSS compressor and optimizer](#) based on csstidy. If you want to create a linear or radial gradient as background or border, check our [CSS Gradient Generator](#).

Hey! You found this booklet interesting? Support Converting Colors with the new Membership Option!

The pro membership hides all ads, plus gives you double the colors in the color bucket, and more awesome pro features!

[Learn more, Memberships starting at \\$2.50/m!](#)

**Follow me
on Twitter!**

@ConvertingColor