

Converting Colors

CIELCh(79, 13.869, 21.608)

Have a look what the booklet for
CIELCh(79, 13.869, 21.608) contains.

CIELCh(79, 13.733, 20.485)	3
<i>Conversions</i>	4
<i>Details</i>	6
<i>Harmonies</i>	11
<i>Previews</i>	20
<i>Color Blindness Simulation</i>	23
<i>CSS Examples</i>	26

Color

CIELCh(79, 13.733, 20.485)

Conversions

Conversions Part 1

Format	Color
Hex	DFBBBB
RGB	223, 187, 187
RGB Percent	87%, 73%, 73%
CMY	0.1248, 0.2660, 0.2660
CMYK	0.00, 0.16, 0.16, 0.12
HSL	0°, 36%, 80%
HSV	0°, 16%, 88%
XYZ	57.2846, 54.9284, 54.6960
YIQ	197.7640, 21.4560, 7.6320

Conversions

Conversions Part 2

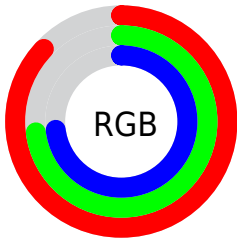
Format	Color
R _Y B	223, 187, 187
Decimal	14662587
CIE Lab	79.00, 12.86, 4.81
CIE LCh	79, 13.733, 20.485
Yxy	54.9284, 0.3432, 0.3291
Android (android.graphics.Color)	4292852667 (0xFFDFB BBB)
YUV	197.7640, -5.3067, 22.1320
Hunter-Lab	74.1137, 8.2688, 8.1235

Details

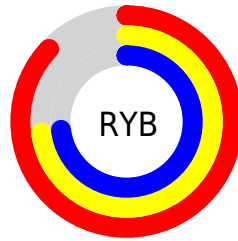
The CIELCh color $79, 13.733, 20.485$ is a light color, and the websafe version is hex `FFCCCC`. A complement of this color would be $86, 12.367, 198.603$, and the grayscale version is $80, 0.010, 296.813$.

A 20% lighter version of the original color is $97, 4.267, 19.539$, and $59, 13.456, 20.778$ is the 20% darker color. If you saturate the color by 10%, you get $73, 23.124, 21.477$, and if you desaturate by 10%, it is $85, 5.018, 19.674$.

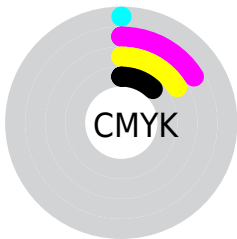
Distribution



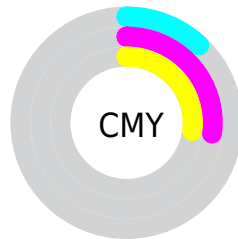
- Red (87%)
- Green (73%)
- Blue (73%)



- Red (87%)
- Yellow (73%)
- Blue (73%)



- Cyan (0%)
- Magenta (16%)
- Yellow (16%)
- Black (12%)



- Cyan (12%)
- Magenta (27%)
- Yellow (27%)


Brightness & Saturation Gradients

These gradients show how the CIELCh color 79, 13.733, 20.485 changes by changing the brightness by 10 percent. The first figure shows a shift by +10% for each color and the second figure -10%.

Similar to the brightness gradients but the following saturation gradients show a change of the CIELCh color 79, 13.733, 20.485 by changing the saturation by 10% instead.

 79, 13.733, 20.485

 79, 13.733, 20.485

 100, 13.733,
20.485

 69, 13.733, 20.485

 99, 13.733, 20.485

 59, 13.733, 20.485

 49, 13.733, 20.485

 39, 13.733, 20.485

 29, 13.733, 20.485

 19, 13.733, 20.485

 9, 13.733, 20.485

 0, 13.733, 20.485

 79, 13.733, 20.485

 79, 13.733, 20.485

73, 23.124, 21.477

85, 5.018, 19.674

67, 33.170, 22.747

91, 3.039, 199.411

62, 43.767, 24.407

98, 10.487,
198.815

57, 54.711, 26.569

98, 10.766,
198.788

53, 65.692, 29.326

50, 76.272, 32.665

48, 85.733, 36.250

47, 92.507, 39.104

47, 94.557, 40.001

Harmonies

Complementary

The Complementary color scheme is a pair of colors which are on the opposite of each other on the color wheel.



79, 13.733, 20.485



86, 12.367, 198.603

Rectangle

The Rectangle color scheme consists of four colors that form a rectangle on the color wheel.



79, 13.733, 20.485



79, 13.733, 70.485



79, 13.733, 200.485



79, 13.733, 250.485

Sweetspot

The Sweet Spot groups the original color and five complimentary colors.



79, 13.731, 20.494



97, 4.538, 19.576



80, 23.135, 325.316



51, 3.105, 19.640



0, 0.000, 0.000



53, 0.007, 296.813

Same Dimension

The Same Dimension uses a secret algorithm to generate beautiful new colors.



79, 13.731, 20.494



87, 18.232, 20.765



83, 11.706, 73.405



44, 4.727, 19.943



36, 79.112, 39.954



6, 25.539, 20.944

Inverse Universe

The Inverse Universe completely reimagines the original color for something new.



86, 12.367, 198.603



97, 16.078, 198.447



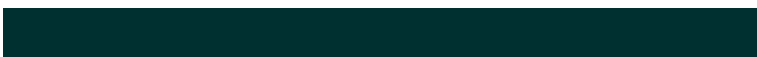
82, 11.230, 257.685



46, 4.454, 198.981



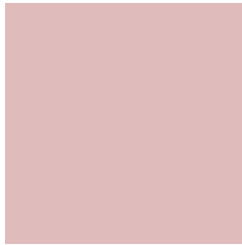
65, 37.933, 196.404



17, 15.583, 196.401

Previews

White Background



This preview shows how the CIELCh color 79, 13.733, 20.485 looks on a white background.

Color Contrast Check

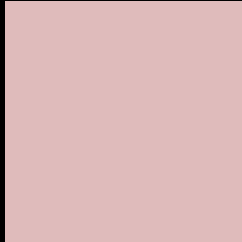
Large Text (above 18pt) WCAG AA × Fail

Any Text WCAG AA × Fail

Large Text (above 18pt) WCAG AAA × Fail

Any Text WCAG AAA × Fail

Black Background



This preview shows how the CIELCh color 79, 13.733, 20.485 looks on a black background.

Color Contrast Check

Large Text (above 18pt) WCAG AA ✓ Pass

Any Text WCAG AA ✓ Pass

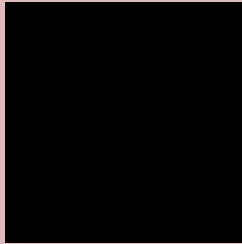
Large Text (above 18pt) WCAG AAA ✓ Pass

Any Text WCAG AAA ✓ Pass

If you want to check with other color combinations, try the [Color Contrast Checker](#).

CIELCh 79, 13.733, 20.485

Background



This preview shows how black text looks on a background with the CIELCh color 79, 13.733, 20.485.

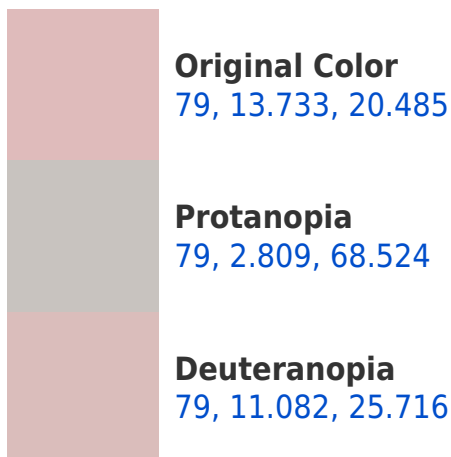


This preview shows how white text looks on a background with the CIELCh color 79, 13.733, 20.485.

Color Blindness Simulation

Color vision deficiency is a very complex topic, and I could not describe the different causes any better than Wikipedia does, so if you want to learn more, you should check out their [article about color blindness](#).

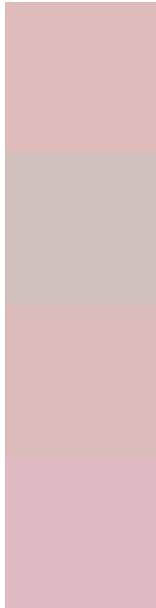
Dichromacy





Tritanopia
79, 16.887, 352.685

Trichromacy



Original Color
79, 13.733, 20.485

Protanomaly
79, 6.091, 29.825

Deuteranomaly
79, 12.198, 22.829

Tritanomaly
79, 15.048, 2.163

Monochromacy



Original Color
79, 13.733, 20.485

Achromatopsia
80, 0.010, 296.813

Achromatomaly
79, 4.836, 19.674

CSS Examples

Text

The CSS property to change the color of the text to CIELCh 79, 13.733, 20.485 is called "color". The color property can be set on classes, ids or directly on the HTML element.

This example shows how text in the color `rgb(223, 187, 187)` looks like.

```
.text, #text, p{  
    color:rgb(223, 187, 187)  
}
```

If you want to add a text shadow in that color use the text-shadow property, you can generate a text shadow directly with our [CSS Text Shadow Generator](#).

Here you see how black text with a 4 pixel rgb(223, 187, 187) colored shadow looks like.

```
.shadow{ text-shadow: 4px 4px 2px rgb(223, 187, 187) }
```

Border

The CSS property to change the border of an element to CIELCh 79, 13.733, 20.485 is called "border". The border property can be set on classes, ids or directly on the HTML element.

This example shows the color as border, it can be applied via the CSS property "border" or "border-color".

```
.border, #border, table{ border:4px solid rgb(223, 187, 187) }
```

If only the border color should be changed use the property `border-color`.

```
.border{ border-color:rgb(223, 187, 187) }
```

If you want to add a box shadow in that color use:

Here you see how a box with a 4 pixel `rgb(223, 187, 187)` colored shadow looks like.

```
.boxshadow{ -moz-box-shadow:4px 4px 4px 4px rgb(223, 187, 187); -webkit-box-shadow:4px 4px 4px 4px rgb(223, 187, 187); box-shadow:4px 4px 4px 4px rgb(223, 187, 187) }
```

Background

The CSS property to change the background color of an element to CIELCh 79, 13.733, 20.485 is called "background". The background property can be set on classes, ids or directly on the HTML element.

```
.background, #background, body{  
background: rgb(223, 187, 187) }
```

If only the background color should be changed can be used:

```
.background{ background-color: rgb(223,  
187, 187) }
```

This example shows the color as background, it is applied via the CSS property "background".

To optimize and compress your CSS code, you can use our [online CSS compressor and optimizer](#) based on csstidy. If you want to create a linear or radial gradient as background or border, check our [CSS Gradient Generator](#).

Hey! You found this booklet interesting? Support Converting Colors with the new Membership Option!

The pro membership hides all ads, plus gives you double the colors in the color bucket, and more awesome pro features!

[Learn more, Memberships starting at \\$2.50/m!](#)

**Follow me
on Twitter!**

@ConvertingColor