

Converting Colors

CIELCh(79, 15.105, 16.739)

Have a look what the booklet for
CIELCh(79, 15.105, 16.739) contains.

CIELCh(79, 15.285, 16.672)	3
<i>Conversions</i>	4
<i>Details</i>	6
<i>Harmonies</i>	11
<i>Previews</i>	20
<i>Color Blindness Simulation</i>	23
<i>CSS Examples</i>	26

Color

CIELCh(79, 15.285, 16.672)

Conversions

Conversions Part 1

Format	Color
Hex	E2BABC
RGB	226, 186, 188
RGB Percent	89%, 73%, 74%
CMY	0.1137, 0.2705, 0.2627
CMYK	0.00, 0.18, 0.17, 0.11
HSL	357°, 41%, 81%
HSV	357°, 18%, 89%
XYZ	58.0110, 54.9284, 55.1315
YIQ	198.1880, 23.1980, 9.1020

Conversions

Conversions Part 2

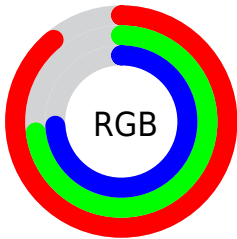
Format	Color
R _Y B	226, 186, 188
Decimal	14858940
CIE Lab	79.00, 14.64, 4.39
CIE LCh	79, 15.285, 16.672
Yxy	54.9284, 0.3452, 0.3268
Android (android.graphics.Color)	4293049020 (0xFFE2BABC)
YUV	198.1880, -5.0227, 24.3911
Hunter-Lab	74.1137, 10.0184, 7.7751

Details

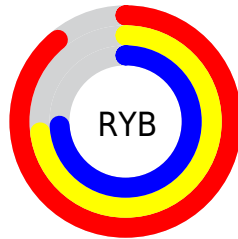
The CIELCh color **79, 15.285, 16.672** is a light color, and the websafe version is hex **FFCCCC**. A complement of this color would be **87, 13.763, 194.123**, and the grayscale version is **80, 0.010, 296.813**.

A 20% lighter version of the original color is **97, 4.737, 7.151**, and **59, 15.105, 16.739** is the 20% darker color. If you saturate the color by 10%, you get **73, 24.771, 17.813**, and if you desaturate by 10%, it is **85, 6.410, 15.736**.

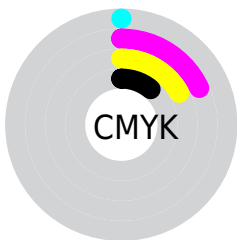
Distribution



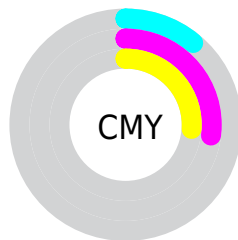
- Red (89%)
- Green (73%)
- Blue (74%)



- Red (89%)
- Yellow (73%)
- Blue (74%)



- Cyan (0%)
- Magenta (18%)
- Yellow (17%)
- Black (11%)



- Cyan (11%)
- Magenta (27%)
- Yellow (26%)

Brightness & Saturation Gradients

These gradients show how the CIELCh color 79, 15.285, 16.672 changes by changing the brightness by 10 percent. The first figure shows a shift by +10% for each color and the second figure -10%.

Similar to the brightness gradients but the following saturation gradients show a change of the CIELCh color 79, 15.285, 16.672 by changing the saturation by 10% instead.

79, 15.285, 16.672

79, 15.285, 16.672

100, 15.285,
16.672

69, 15.285, 16.672

99, 15.285, 16.672

59, 15.285, 16.672

49, 15.285, 16.672

39, 15.285, 16.672

29, 15.285, 16.672

19, 15.285, 16.672

9, 15.285, 16.672

0, 15.285, 16.672

79, 15.285, 16.672

79, 15.285, 16.672

73, 24.771, 17.813

85, 6.410, 15.736

67, 34.818, 19.244

91, 1.848, 195.436

62, 45.285, 21.081

98, 9.523, 194.588

57, 55.935, 23.444

98, 9.838, 198.852

54, 66.437, 26.445

50, 76.408, 30.109

48, 85.347, 34.192

47, 92.265, 37.867

47, 93.480, 38.443

Harmonies

Complementary

The Complementary color scheme is a pair of colors which are on the opposite of each other on the color wheel.



79, 15.285, 16.672



87, 13.763, 194.123

Rectangle

The Rectangle color scheme consists of four colors that form a rectangle on the color wheel.



79, 15.285, 16.672



79, 15.285, 66.672



79, 15.285, 196.672



79, 15.285, 246.672

Sweetspot

The Sweet Spot groups the original color and five complimentary colors.



79, 15.283, 16.680



97, 4.549, 15.480



80, 25.273, 324.003



51, 3.111, 15.552



0, 0.000, 0.000



53, 0.007, 296.813

Same Dimension

The Same Dimension uses a secret algorithm to generate beautiful new colors.



79, 15.283, 16.680



86, 20.248, 17.042



83, 12.699, 67.756



44, 4.732, 15.896



36, 77.000, 37.916



6, 25.428, 18.842

Inverse Universe

The Inverse Universe completely reimagines the original color for something new.



79, 15.283, 16.680



86, 20.248, 17.042



82, 11.948, 252.210



44, 4.732, 15.896



36, 77.000, 37.916



6, 25.428, 18.842

Previews

White Background



This preview shows how the CIELCh color 79, 15.285, 16.672 looks on a white background.

Color Contrast Check

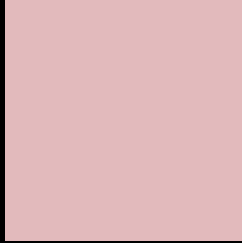
Large Text (above 18pt) WCAG AA × Fail

Any Text WCAG AA × Fail

Large Text (above 18pt) WCAG AAA × Fail

Any Text WCAG AAA × Fail

Black Background



This preview shows how the CIELCh color 79, 15.285, 16.672 looks on a black background.

Color Contrast Check

Large Text (above 18pt) WCAG AA ✓ Pass

Any Text WCAG AA ✓ Pass

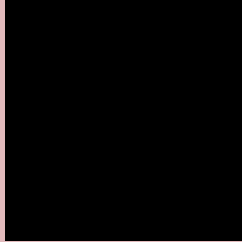
Large Text (above 18pt) WCAG AAA ✓ Pass

Any Text WCAG AAA ✓ Pass

If you want to check with other color combinations, try the [Color Contrast Checker](#).

CIELCh 79, 15.285, 16.672

Background



This preview shows how black text looks on a background with the CIELCh color 79, 15.285, 16.672.

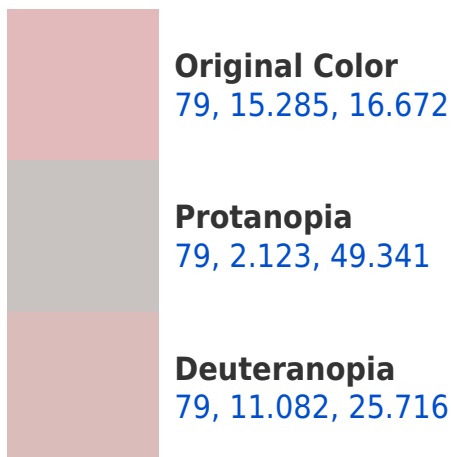


This preview shows how white text looks on a background with the CIELCh color 79, 15.285, 16.672.

Color Blindness Simulation

Color vision deficiency is a very complex topic, and I could not describe the different causes any better than Wikipedia does, so if you want to learn more, you should check out their [article about color blindness](#).

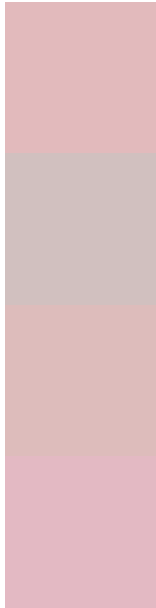
Dichromacy





Tritanopia
79, 17.908, 354.534

Trichromacy



Original Color
79, 15.285, 16.672

Protanomaly
79, 6.391, 24.587

Deuteranomaly
79, 12.587, 22.784

Tritanomaly
79, 16.657, 2.254

Monochromacy



Original Color
79, 15.285, 16.672

Achromatopsia
80, 0.010, 296.813

Achromatomaly
80, 5.213, 19.712

CSS Examples

Text

The CSS property to change the color of the text to CIELCh 79, 15.285, 16.672 is called "color". The color property can be set on classes, ids or directly on the HTML element.

This example shows how text in the color `rgb(226, 186, 188)` looks like.

```
.text, #text, p{  
    color:rgb(226, 186, 188)  
}
```

If you want to add a text shadow in that color use the text-shadow property, you can generate a text shadow directly with our [CSS Text Shadow Generator](#).

Here you see how black text with a 4 pixel rgb(226, 186, 188) colored shadow looks like.

```
.shadow{ text-shadow: 4px 4px 2px rgb(226, 186, 188) }
```

Border

The CSS property to change the border of an element to CIELCh 79, 15.285, 16.672 is called "border". The border property can be set on classes, ids or directly on the HTML element.

This example shows the color as border, it can be applied via the CSS property "border" or "border-color".

```
.border, #border, table{ border:4px solid rgb(226, 186, 188) }
```

If only the border color should be changed use the property `border-color`.

```
.border{ border-color:rgb(226, 186, 188) }
```

If you want to add a box shadow in that color use:

Here you see how a box with a 4 pixel `rgb(226, 186, 188)` colored shadow looks like.

```
.boxshadow{ -moz-box-shadow:4px 4px 4px 4px rgb(226, 186, 188); -webkit-box-shadow:4px 4px 4px 4px rgb(226, 186, 188); box-shadow:4px 4px 4px 4px rgb(226, 186, 188) }
```

Background

The CSS property to change the background color of an element to CIELCh 79, 15.285, 16.672 is called "background". The background property can be set on classes, ids or directly on the HTML element.

```
.background, #background, body{  
background: rgb(226, 186, 188) }
```

If only the background color should be changed can be used:

```
.background{ background-color: rgb(226,  
186, 188) }
```

This example shows the color as background, it is applied via the CSS property "background".

To optimize and compress your CSS code, you can use our [online CSS compressor and optimizer](#) based on csstidy. If you want to create a linear or radial gradient as background or border, check our [CSS Gradient Generator](#).

Hey! You found this booklet interesting? Support Converting Colors with the new Membership Option!

The pro membership hides all ads, plus gives you double the colors in the color bucket, and more awesome pro features!

[Learn more, Memberships starting at \\$2.50/m!](#)

**Follow me
on Twitter!**

@ConvertingColor