

Converting Colors

CIELCh(79, 15.687, 14.878)

Have a look what the booklet for
CIELCh(79, 15.687, 14.878) contains.

CIELCh(79, 15.687, 14.878)	3
<i>Conversions</i>	4
<i>Details</i>	6
<i>Harmonies</i>	11
<i>Previews</i>	20
<i>Color Blindness Simulation</i>	23
<i>CSS Examples</i>	26

Color

CIELCh(79, 15.687, 14.878)

Conversions

Conversions Part 1

Format	Color
Hex	E3BABD
RGB	227, 186, 189
RGB Percent	89%, 73%, 74%
CMY	0.1111, 0.2718, 0.2600
CMYK	0.00, 0.18, 0.17, 0.11
HSL	356°, 42%, 81%
HSV	356°, 18%, 89%
XYZ	58.2241, 54.9284, 55.5031
YIQ	198.6010, 23.4730, 9.6250

Conversions

Conversions Part 2

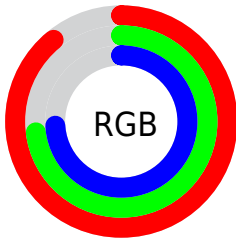
Format	Color
R _Y B	227, 186, 189
Decimal	14924477
CIE Lab	79.00, 15.16, 4.03
CIE LCh	79, 15.687, 14.878
Yxy	54.9284, 0.3452, 0.3257
Android (android.graphics.Color)	4293114557 (0xFFE3BABD)
YUV	198.6010, -4.7333, 24.9059
Hunter-Lab	74.1137, 10.5316, 7.4778

Details

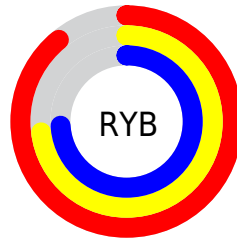
The CIELCh color **79, 15.687, 14.878** is a light color, and the websafe version is hex **FFCCCC**. A complement of this color would be **87, 14.166, 192.085**, and the grayscale version is **80, 0.010, 296.813**.

A 20% lighter version of the original color is **97, 4.872, 1.286**, and **59, 15.527, 14.840** is the 20% darker color. If you saturate the color by 10%, you get **73, 25.181, 16.069**, and if you desaturate by 10%, it is **85, 6.771, 13.895**.

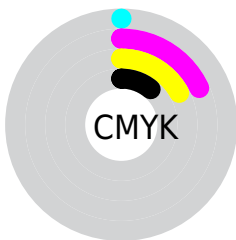
Distribution



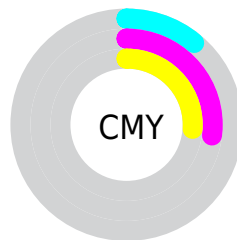
- Red (89%)
- Green (73%)
- Blue (74%)



- Red (89%)
- Yellow (73%)
- Blue (74%)



- Cyan (0%)
- Magenta (18%)
- Yellow (17%)
- Black (11%)



- Cyan (11%)
- Magenta (27%)
- Yellow (26%)

Brightness & Saturation Gradients

These gradients show how the CIELCh color 79, 15.687, 14.878 changes by changing the brightness by 10 percent. The first figure shows a shift by +10% for each color and the second figure -10%.

Similar to the brightness gradients but the following saturation gradients show a change of the CIELCh color 79, 15.687, 14.878 by changing the saturation by 10% instead.

79, 15.687, 14.878

79, 15.687, 14.878

100, 15.687,
14.878

69, 15.687, 14.878

99, 15.687, 14.878

59, 15.687, 14.878

49, 15.687, 14.878

39, 15.687, 14.878

29, 15.687, 14.878

19, 15.687, 14.878

9, 15.687, 14.878

0, 15.687, 14.878

79, 15.687, 14.878

79, 15.687, 14.878

73, 25.181, 16.069

85, 6.771, 13.895

67, 35.192, 17.552

91, 1.551, 193.599

62, 45.564, 19.442

98, 9.306, 192.643

58, 56.046, 21.863

98, 9.619, 198.867

54, 66.303, 24.937

51, 75.969, 28.709

49, 84.639, 32.987

48, 91.596, 37.032

47, 92.700, 37.618

Harmonies

Complementary

The Complementary color scheme is a pair of colors which are on the opposite of each other on the color wheel.



79, 15.687, 14.878



87, 14.166, 192.085

Rectangle

The Rectangle color scheme consists of four colors that form a rectangle on the color wheel.



79, 15.687, 14.878



79, 15.687, 64.878



79, 15.687, 194.878



79, 15.687, 244.878

Sweetspot

The Sweet Spot groups the original color and five complimentary colors.



79, 15.685, 14.885



97, 4.562, 13.591



80, 25.639, 323.069



51, 3.120, 13.665



0, 0.000, 0.000



53, 0.007, 296.813

Same Dimension

The Same Dimension uses a secret algorithm to generate beautiful new colors.



79, 15.685, 14.885



85, 21.289, 15.336



83, 12.870, 63.940



44, 4.742, 14.025



36, 76.095, 36.971



6, 25.386, 17.862

Inverse Universe

The Inverse Universe completely reimagines the original color for something new.



79, 15.685, 14.885



85, 21.289, 15.336



83, 11.970, 248.222



44, 4.742, 14.025



36, 76.095, 36.971



6, 25.386, 17.862

Previews

White Background



This preview shows how the CIELCh color 79, 15.687, 14.878 looks on a white background.

Color Contrast Check

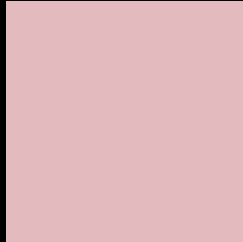
Large Text (above 18pt) WCAG AA × Fail

Any Text WCAG AA × Fail

Large Text (above 18pt) WCAG AAA × Fail

Any Text WCAG AAA × Fail

Black Background



This preview shows how the CIELCh color 79, 15.687, 14.878 looks on a black background.

Color Contrast Check

Large Text (above 18pt) WCAG AA ✓ Pass

Any Text WCAG AA ✓ Pass

Large Text (above 18pt) WCAG AAA ✓ Pass

Any Text WCAG AAA ✓ Pass

If you want to check with other color combinations, try the [Color Contrast Checker](#).

CIELCh 79, 15.687, 14.878

Background



This preview shows how black text looks on a background with the CIELCh color 79, 15.687, 14.878.

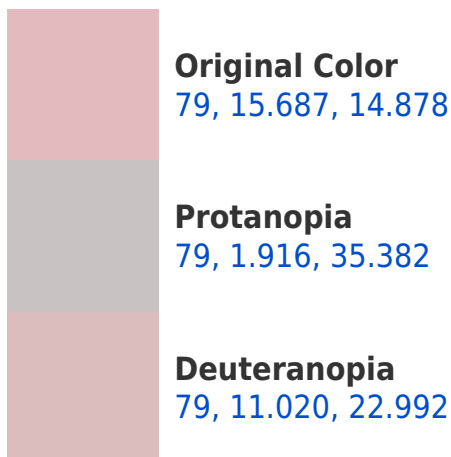


This preview shows how white text looks on a background with the CIELCh color 79, 15.687, 14.878.

Color Blindness Simulation

Color vision deficiency is a very complex topic, and I could not describe the different causes any better than Wikipedia does, so if you want to learn more, you should check out their [article about color blindness](#).

Dichromacy





Tritanopia
79, 18.049, 356.649

Trichromacy



Original Color
79, 15.687, 14.878

Protanomaly
79, 6.739, 19.861

Deuteranomaly
79, 12.549, 20.380

Tritanomaly
79, 17.020, 2.706

Monochromacy



Original Color
79, 15.687, 14.878

Achromatopsia
80, 0.010, 296.813

Achromatomaly
80, 5.234, 13.896

CSS Examples

Text

The CSS property to change the color of the text to CIELCh 79, 15.687, 14.878 is called "color". The color property can be set on classes, ids or directly on the HTML element.

This example shows how text in the color `rgb(227, 186, 189)` looks like.

```
.text, #text, p{  
    color:rgb(227, 186, 189)  
}
```

If you want to add a text shadow in that color use the text-shadow property, you can generate a text shadow directly with our [CSS Text Shadow Generator](#).

Here you see how black text with a 4 pixel rgb(227, 186, 189) colored shadow looks like.

```
.shadow{ text-shadow: 4px 4px 2px rgb(227, 186, 189) }
```

Border

The CSS property to change the border of an element to CIELCh 79, 15.687, 14.878 is called "border". The border property can be set on classes, ids or directly on the HTML element.

This example shows the color as border, it can be applied via the CSS property "border" or "border-color".

```
.border, #border, table{ border:4px solid rgb(227, 186, 189) }
```

If only the border color should be changed use the property `border-color`.

```
.border{ border-color:rgb(227, 186, 189) }
```

If you want to add a box shadow in that color use:

Here you see how a box with a 4 pixel `rgb(227, 186, 189)` colored shadow looks like.

```
.boxshadow{ -moz-box-shadow:4px 4px 4px  
4px rgb(227, 186, 189); -webkit-box-  
shadow:4px 4px 4px 4px rgb(227, 186, 189);  
box-shadow:4px 4px 4px 4px rgb(227, 186,  
189) }
```

Background

The CSS property to change the background color of an element to CIELCh 79, 15.687, 14.878 is called "background". The background property can be set on classes, ids or directly on the HTML element.

```
.background, #background, body{  
background: rgb(227, 186, 189) }
```

If only the background color should be changed can be used:

```
.background{ background-color: rgb(227,  
186, 189) }
```

This example shows the color as background, it is applied via the CSS property "background".

To optimize and compress your CSS code, you can use our [online CSS compressor and optimizer](#) based on csstidy. If you want to create a linear or radial gradient as background or border, check our [CSS Gradient Generator](#).

Hey! You found this booklet interesting? Support Converting Colors with the new Membership Option!

The pro membership hides all ads, plus gives you double the colors in the color bucket, and more awesome pro features!

[Learn more, Memberships starting at \\$2.50/m!](#)

**Follow me
on Twitter!**

@ConvertingColor