

Converting Colors

CIELCh(79, 16.281, 59.548)

Have a look what the booklet for
CIELCh(79, 16.281, 59.548) contains.

CIELCh(79, 16.264, 60.646)	3
<i>Conversions</i>	4
<i>Details</i>	6
<i>Harmonies</i>	11
<i>Previews</i>	20
<i>Color Blindness Simulation</i>	23
<i>CSS Examples</i>	26

Color

CIELCh(79, 16.264, 60.646)

Conversions

Conversions Part 1

Format	Color
Hex	DDBEAA
RGB	221, 190, 170
RGB Percent	87%, 75%, 67%
CMY	0.1344, 0.2560, 0.3344
CMYK	0.00, 0.14, 0.23, 0.13
HSL	24°, 43%, 77%
HSV	24°, 23%, 87%
XYZ	55.3170, 54.9284, 45.5843
YIQ	196.9890, 24.8960, 0.3520

Conversions

Conversions Part 2

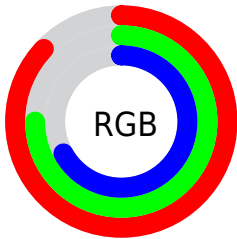
Format	Color
R _Y B	221, 203, 170
Decimal	14532266
CIE Lab	79.00, 7.97, 14.18
CIE LCh	79, 16.264, 60.646
Yxy	54.9284, 0.3550, 0.3525
Android (android.graphics.Color)	4292722346 (0xFFDDBEAA)
YUV	196.9890, -13.3056, 21.0576
Hunter-Lab	74.1137, 3.5300, 15.4127

Details

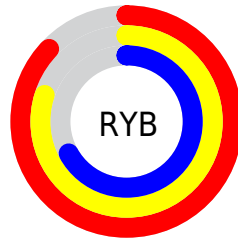
The CIELCh color **79, 16.264, 60.646** is a light color, and the websafe version is hex **FFCCCC**. A complement of this color would be **79, 14.651, 245.899**, and the grayscale version is **79, 0.010, 296.813**.

A 20% lighter version of the original color is **97, 11.173, 92.222**, and **59, 16.108, 61.545** is the 20% darker color. If you saturate the color by 10%, you get **75, 24.090, 59.725**, and if you desaturate by 10%, it is **83, 8.928, 61.604**.

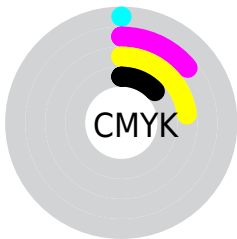
Distribution



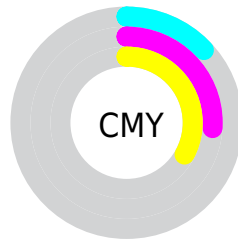
- Red (87%)
- Green (75%)
- Blue (67%)



- Red (87%)
- Yellow (80%)
- Blue (67%)



- Cyan (0%)
- Magenta (14%)
- Yellow (23%)
- Black (13%)



- Cyan (13%)
- Magenta (26%)
- Yellow (33%)

Brightness & Saturation Gradients

These gradients show how the CIELCh color 79, 16.264, 60.646 changes by changing the brightness by 10 percent. The first figure shows a shift by +10% for each color and the second figure -10%.

Similar to the brightness gradients but the following saturation gradients show a change of the CIELCh color 79, 16.264, 60.646 by changing the saturation by 10% instead.

■ 79, 16.264, 60.646

■ 79, 16.264, 60.646

■ 100, 16.264,
60.646

■ 69, 16.264, 60.646

■ 99, 16.264, 60.646

■ 59, 16.264, 60.646

■ 49, 16.264, 60.646

■ 39, 16.264, 60.646

■ 29, 16.264, 60.646

■ 19, 16.264, 60.646

■ 9, 16.264, 60.646

■ 0, 16.264, 60.646

■ 79, 16.264, 60.646

■ 79, 16.264, 60.646

75, 24.090, 59.725

83, 8.928, 61.604

72, 32.430, 58.835

87, 2.043, 62.414

68, 41.271, 57.991

91, 4.437, 243.758

65, 50.528, 57.176

95, 9.582, 237.721

61, 59.964, 56.325

98, 11.570,
198.733

58, 69.037, 55.267

56, 76.704, 53.637

54, 80.905, 52.178

Harmonies

Complementary

The Complementary color scheme is a pair of colors which are on the opposite of each other on the color wheel.



79, 16.264, 60.646



79, 14.651, 245.899

Rectangle

The Rectangle color scheme consists of four colors that form a rectangle on the color wheel.



79, 16.264, 60.646



79, 16.264, 110.646



79, 16.264, 240.646



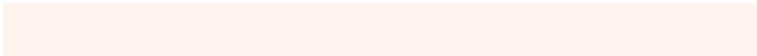
79, 16.264, 290.646

Sweetspot

The Sweet Spot groups the original color and five complimentary colors.



79, 16.264, 60.656



97, 5.260, 62.154



75, 25.231, 339.664



51, 3.425, 62.102



0, 0.000, 0.000



53, 0.007, 296.813

Same Dimension

The Same Dimension uses a secret algorithm to generate beautiful new colors.



79, 16.264, 60.656



88, 22.543, 60.175



85, 23.571, 102.496



44, 3.804, 61.945



43, 67.208, 52.813



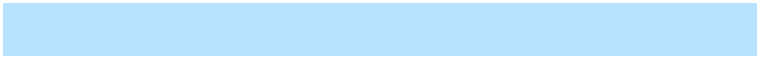
9, 18.761, 47.723

Inverse Universe

The Inverse Universe completely reimagines the original color for something new.



79, 14.651, 245.899



88, 19.780, 246.742



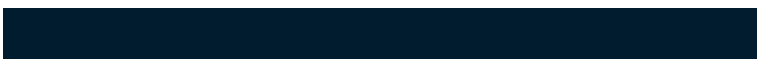
73, 24.526, 287.893



44, 3.660, 244.065



43, 43.288, 271.007



9, 15.310, 260.329

Previews

White Background



This preview shows how the CIELCh color 79, 16.264, 60.646 looks on a white background.

Color Contrast Check

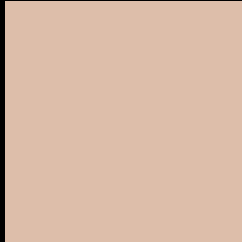
Large Text (above 18pt) WCAG AA × Fail

Any Text WCAG AA × Fail

Large Text (above 18pt) WCAG AAA × Fail

Any Text WCAG AAA × Fail

Black Background



This preview shows how the CIELCh color 79, 16.264, 60.646 looks on a black background.

Color Contrast Check

Large Text (above 18pt) WCAG AA ✓ Pass

Any Text WCAG AA ✓ Pass

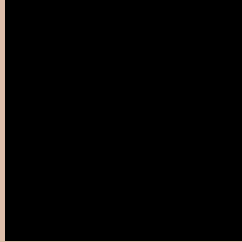
Large Text (above 18pt) WCAG AAA ✓ Pass

Any Text WCAG AAA ✓ Pass

If you want to check with other color combinations, try the [Color Contrast Checker](#).

CIELCh 79, 16.264, 60.646

Background



This preview shows how black text looks on a background with the CIELCh color 79, 16.264, 60.646.



This preview shows how white text looks on a background with the CIELCh color 79, 16.264, 60.646.

Color Blindness Simulation

Color vision deficiency is a very complex topic, and I could not describe the different causes any better than Wikipedia does, so if you want to learn more, you should check out their [article about color blindness](#).

Dichromacy



Original Color

79, 16.264, 60.646

Protanopia

79, 12.310, 90.806

Deuteranopia

79, 17.220, 53.838



Tritanopia
79, 16.557, 352.026

Trichromacy



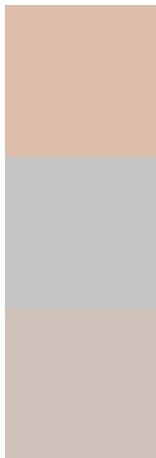
Original Color
79, 16.264, 60.646

Protanomaly
79, 13.201, 77.105

Deuteranomaly
79, 16.872, 56.737

Tritanomaly
79, 13.716, 16.073

Monochromacy



Original Color
79, 16.264, 60.646

Achromatopsia
80, 0.010, 296.813

Achromatomaly
79, 5.842, 59.117

CSS Examples

Text

The CSS property to change the color of the text to CIELCh 79, 16.264, 60.646 is called "color". The color property can be set on classes, ids or directly on the HTML element.

This example shows how text in the color `rgb(221, 190, 170)` looks like.

```
.text, #text, p{  
    color:rgb(221, 190, 170)  
}
```

If you want to add a text shadow in that color use the text-shadow property, you can generate a text shadow directly with our [CSS Text Shadow Generator](#).

Here you see how black text with a 4 pixel rgb(221, 190, 170) colored shadow looks like.

```
.shadow{ text-shadow: 4px 4px 2px rgb(221, 190, 170) }
```

Border

The CSS property to change the border of an element to CIELCh 79, 16.264, 60.646 is called "border". The border property can be set on classes, ids or directly on the HTML element.

This example shows the color as border, it can be applied via the CSS property "border" or "border-color".

```
.border, #border, table{ border:4px solid rgb(221, 190, 170) }
```

If only the border color should be changed use the property `border-color`.

```
.border{ border-color:rgb(221, 190, 170) }
```

If you want to add a box shadow in that color use:

Here you see how a box with a 4 pixel `rgb(221, 190, 170)` colored shadow looks like.

```
.boxshadow{ -moz-box-shadow:4px 4px 4px  
4px rgb(221, 190, 170); -webkit-box-  
shadow:4px 4px 4px 4px rgb(221, 190, 170);  
box-shadow:4px 4px 4px 4px rgb(221, 190,  
170) }
```

Background

The CSS property to change the background color of an element to CIELCh 79, 16.264, 60.646 is called "background". The background property can be set on classes, ids or directly on the HTML element.

```
.background, #background, body{  
background: rgb(221, 190, 170) }
```

If only the background color should be changed can be used:

```
.background{ background-color: rgb(221,  
190, 170) }
```

This example shows the color as background, it is applied via the CSS property "background".

To optimize and compress your CSS code, you can use our [online CSS compressor and optimizer](#) based on csstidy. If you want to create a linear or radial gradient as background or border, check our [CSS Gradient Generator](#).

Hey! You found this booklet interesting? Support Converting Colors with the new Membership Option!

The pro membership hides all ads, plus gives you double the colors in the color bucket, and more awesome pro features!

[Learn more, Memberships starting at \\$2.50/m!](#)

**Follow me
on Twitter!**

@ConvertingColor