

Converting Colors

CIELCh(79, 17.230, 43.922)

Have a look what the booklet for
CIELCh(79, 17.230, 43.922) contains.

CIELCh(79, 17.218, 44.003)	3
<i>Conversions</i>	4
<i>Details</i>	6
<i>Harmonies</i>	11
<i>Previews</i>	20
<i>Color Blindness Simulation</i>	23
<i>CSS Examples</i>	26

Color

CIELCh(79, 17.218, 44.003)

Conversions

Conversions Part 1

Format	Color
Hex	E3BBAE
RGB	227, 187, 174
RGB Percent	89%, 73%, 68%
CMY	0.1098, 0.2666, 0.3176
CMYK	0.00, 0.18, 0.23, 0.11
HSL	15°, 49%, 79%
HSV	15°, 23%, 89%
XYZ	57.0896, 54.9284, 47.6386
YIQ	197.4780, 28.0130, 4.4370

Conversions

Conversions Part 2

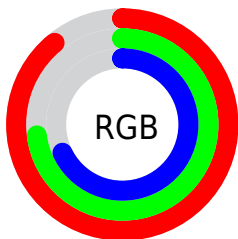
Format	Color
R _Y B	227, 191, 174
Decimal	14924718
CIE Lab	79.00, 12.38, 11.96
CIE LCh	79, 17.218, 44.003
Yxy	54.9284, 0.3576, 0.3440
Android (android.graphics.Color)	4293114798 (0xFFE3BBAE)
YUV	197.4780, -11.5747, 25.8908
Hunter-Lab	74.1137, 7.7993, 13.7694

Details

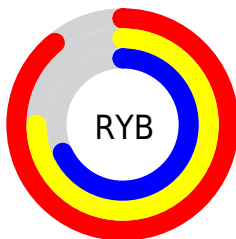
The CIELCh color **79, 17.218, 44.003** is a light color, and the websafe version is hex **FFCCCC**. A complement of this color would be **83, 14.818, 226.373**, and the grayscale version is **80, 0.010, 296.813**.

A 20% lighter version of the original color is **96, 8.351, 78.130**, and **59, 17.119, 43.869** is the 20% darker color. If you saturate the color by 10%, you get **74, 25.625, 43.848**, and if you desaturate by 10%, it is **84, 9.450, 44.276**.

Distribution



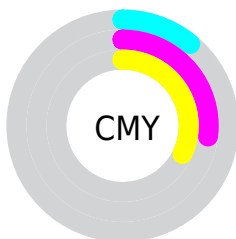
- Red (89%)
- Green (73%)
- Blue (68%)



- Red (89%)
- Yellow (75%)
- Blue (68%)



- Cyan (0%)
- Magenta (18%)
- Yellow (23%)
- Black (11%)



- Cyan (11%)
- Magenta (27%)
- Yellow (32%)

Brightness & Saturation Gradients

These gradients show how the CIELCh color 79, 17.218, 44.003 changes by changing the brightness by 10 percent. The first figure shows a shift by +10% for each color and the second figure -10%.

Similar to the brightness gradients but the following saturation gradients show a change of the CIELCh color 79, 17.218, 44.003 by changing the saturation by 10% instead.

79, 17.218, 44.003

79, 17.218, 44.003

100, 17.218,
44.003

69, 17.218, 44.003

99, 17.218, 44.003

59, 17.218, 44.003

49, 17.218, 44.003

39, 17.218, 44.003

29, 17.218, 44.003

19, 17.218, 44.003

9, 17.218, 44.003

0, 17.218, 44.003

79, 17.218, 44.003

79, 17.218, 44.003

74, 25.625, 43.848

84, 9.450, 44.276

70, 34.705, 43.826

89, 2.276, 44.461

66, 44.444, 43.974

94, 4.364, 225.294

62, 54.758, 44.301

98, 9.514, 198.874

58, 65.407, 44.762

55, 75.827, 45.178

52, 84.789, 45.084

51, 89.466, 44.693

Harmonies

Complementary

The Complementary color scheme is a pair of colors which are on the opposite of each other on the color wheel.



79, 17.218, 44.003



83, 14.818, 226.373

Rectangle

The Rectangle color scheme consists of four colors that form a rectangle on the color wheel.



79, 17.218, 44.003



79, 17.218, 94.003



79, 17.218, 224.003



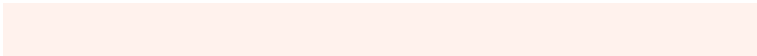
79, 17.218, 274.003

Sweetspot

The Sweet Spot groups the original color and five complimentary colors.



79, 17.217, 44.012



96, 5.310, 44.448



77, 28.942, 333.256



51, 3.459, 44.434



0, 0.000, 0.000



53, 0.007, 296.813

Same Dimension

The Same Dimension uses a secret algorithm to generate beautiful new colors.



79, 17.217, 44.012



85, 23.146, 43.918



85, 21.036, 93.226



46, 3.994, 44.387



40, 74.324, 45.141



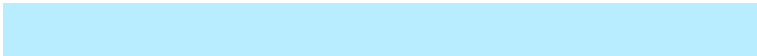
9, 23.001, 36.352

Inverse Universe

The Inverse Universe completely reimagines the original color for something new.



83, 14.818, 226.373



91, 19.229, 226.820



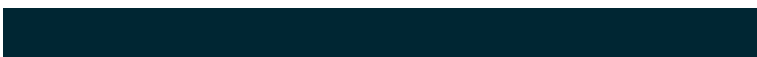
76, 21.291, 279.393



47, 3.776, 225.425



52, 34.810, 245.156



14, 14.161, 237.102

Previews

White Background



This preview shows how the CIELCh color 79, 17.218, 44.003 looks on a white background.

Color Contrast Check

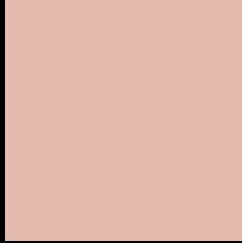
Large Text (above 18pt) WCAG AA × Fail

Any Text WCAG AA × Fail

Large Text (above 18pt) WCAG AAA × Fail

Any Text WCAG AAA × Fail

Black Background



This preview shows how the CIELCh color 79, 17.218, 44.003 looks on a black background.

Color Contrast Check

Large Text (above 18pt) WCAG AA ✓ Pass

Any Text WCAG AA ✓ Pass

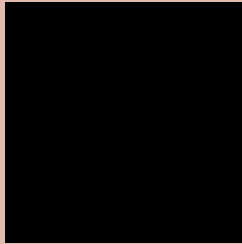
Large Text (above 18pt) WCAG AAA ✓ Pass

Any Text WCAG AAA ✓ Pass

If you want to check with other color combinations, try the [Color Contrast Checker](#).

CIELCh 79, 17.218, 44.003

Background



This preview shows how black text looks on a background with the CIELCh color 79, 17.218, 44.003.



This preview shows how white text looks on a background with the CIELCh color 79, 17.218, 44.003.

Color Blindness Simulation

Color vision deficiency is a very complex topic, and I could not describe the different causes any better than Wikipedia does, so if you want to learn more, you should check out their [article about color blindness](#).

Dichromacy



Original Color

79, 17.218, 44.003

Protanopia

79, 9.533, 90.633

Deuteranopia

79, 15.576, 50.867



Tritanopia
79, 19.294, 356.719

Trichromacy



Original Color
79, 17.218, 44.003

Protanomaly
79, 11.117, 65.473

Deuteranomaly
79, 16.008, 47.887

Tritanomaly
79, 17.335, 12.073

Monochromacy



Original Color
79, 17.218, 44.003

Achromatopsia
80, 0.010, 296.813

Achromatomaly
79, 6.018, 40.396

CSS Examples

Text

The CSS property to change the color of the text to CIELCh 79, 17.218, 44.003 is called "color". The color property can be set on classes, ids or directly on the HTML element.

This example shows how text in the color `rgb(227, 187, 174)` looks like.

```
.text, #text, p{  
    color:rgb(227, 187, 174)  
}
```

If you want to add a text shadow in that color use the text-shadow property, you can generate a text shadow directly with our [CSS Text Shadow Generator](#).

Here you see how black text with a 4 pixel rgb(227, 187, 174) colored shadow looks like.

```
.shadow{ text-shadow: 4px 4px 2px rgb(227, 187, 174) }
```

Border

The CSS property to change the border of an element to CIELCh 79, 17.218, 44.003 is called "border". The border property can be set on classes, ids or directly on the HTML element.

This example shows the color as border, it can be applied via the CSS property "border" or "border-color".

```
.border, #border, table{ border:4px solid rgb(227, 187, 174) }
```

If only the border color should be changed use the property `border-color`.

```
.border{ border-color:rgb(227, 187, 174) }
```

If you want to add a box shadow in that color use:

Here you see how a box with a 4 pixel `rgb(227, 187, 174)` colored shadow looks like.

```
.boxshadow{ -moz-box-shadow:4px 4px 4px  
4px rgb(227, 187, 174); -webkit-box-  
shadow:4px 4px 4px 4px rgb(227, 187, 174);  
box-shadow:4px 4px 4px 4px rgb(227, 187,  
174) }
```

Background

The CSS property to change the background color of an element to CIELCh 79, 17.218, 44.003 is called "background". The background property can be set on classes, ids or directly on the HTML element.

```
.background, #background, body{  
background: rgb(227, 187, 174) }
```

If only the background color should be changed can be used:

```
.background{ background-color: rgb(227,  
187, 174) }
```

This example shows the color as background, it is applied via the CSS property "background".

To optimize and compress your CSS code, you can use our [online CSS compressor and optimizer](#) based on csstidy. If you want to create a linear or radial gradient as background or border, check our [CSS Gradient Generator](#).

Hey! You found this booklet interesting? Support Converting Colors with the new Membership Option!

The pro membership hides all ads, plus gives you double the colors in the color bucket, and more awesome pro features!

[Learn more, Memberships starting at \\$2.50/m!](#)

**Follow me
on Twitter!**

@ConvertingColor