

Converting Colors

CIELCh(79, 17.596, 21.554)

Have a look what the booklet for
CIELCh(79, 17.596, 21.554) contains.

CIELCh(79, 17.347, 22.536)	3
<i>Conversions</i>	4
<i>Details</i>	6
<i>Harmonies</i>	11
<i>Previews</i>	20
<i>Color Blindness Simulation</i>	23
<i>CSS Examples</i>	26

Color

CIELCh(79, 17.347, 22.536)

Conversions

Conversions Part 1

Format	Color
Hex	E6B9B8
RGB	230, 185, 184
RGB Percent	90%, 73%, 72%
CMY	0.0984, 0.2748, 0.2788
CMYK	0.00, 0.20, 0.20, 0.10
HSL	1°, 48%, 81%
HSV	1°, 20%, 90%
XYZ	58.5791, 54.9284, 52.8164
YIQ	198.3410, 27.1410, 9.2290

Conversions

Conversions Part 2

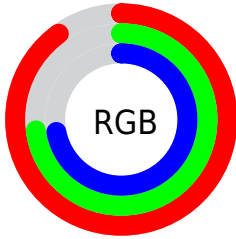
Format	Color
R _Y B	230, 185, 184
Decimal	15120824
CIE Lab	79.00, 16.02, 6.65
CIE LCh	79, 17.347, 22.536
Yxy	54.9284, 0.3522, 0.3302
Android (android.graphics.Color)	4293310904 (0xFFE6B9B8)
YUV	198.3410, -7.0701, 27.7649
Hunter-Lab	74.1137, 11.3866, 9.6271

Details

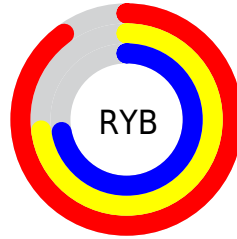
The CIELCh color **79, 17.347, 22.536** is a light color, and the websafe version is hex **FFCCCC**. A complement of this color would be **88, 15.176, 200.408**, and the grayscale version is **80, 0.010, 296.813**.

A 20% lighter version of the original color is **96, 5.023, 25.437**, and **59, 17.350, 23.045** is the 20% darker color. If you saturate the color by 10%, you get **73, 27.054, 23.535**, and if you desaturate by 10%, it is **85, 8.334, 21.763**.

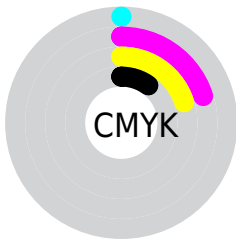
Distribution



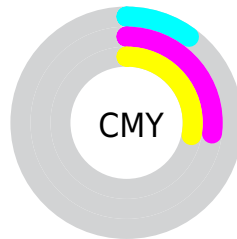
- Red (90%)
- Green (73%)
- Blue (72%)



- Red (90%)
- Yellow (73%)
- Blue (72%)



- Cyan (0%)
- Magenta (20%)
- Yellow (20%)
- Black (10%)



- Cyan (10%)
- Magenta (27%)
- Yellow (28%)

Brightness & Saturation Gradients

These gradients show how the CIELCh color 79, 17.347, 22.536 changes by changing the brightness by 10 percent. The first figure shows a shift by +10% for each color and the second figure -10%.

Similar to the brightness gradients but the following saturation gradients show a change of the CIELCh color 79, 17.347, 22.536 by changing the saturation by 10% instead.

79, 17.347, 22.536

79, 17.347, 22.536

100, 17.347,
22.536

69, 17.347, 22.536

99, 17.347, 22.536

59, 17.347, 22.536

49, 17.347, 22.536

39, 17.347, 22.536

29, 17.347, 22.536

19, 17.347, 22.536

9, 17.347, 22.536

0, 17.347, 22.536

79, 17.347, 22.536

79, 17.347, 22.536

73, 27.054, 23.535

85, 8.334, 21.763

68, 37.422, 24.833

91, 0.012, 316.579

62, 48.330, 26.538

98, 7.687, 200.917

58, 59.554, 28.748

98, 8.550, 198.942

54, 70.753, 31.522

51, 81.405, 34.753

49, 90.484, 37.914

48, 96.423, 40.175

Harmonies

Complementary

The Complementary color scheme is a pair of colors which are on the opposite of each other on the color wheel.



79, 17.347, 22.536



88, 15.176, 200.408

Rectangle

The Rectangle color scheme consists of four colors that form a rectangle on the color wheel.



79, 17.347, 22.536



79, 17.347, 72.536



79, 17.347, 202.536



79, 17.347, 252.536

Sweetspot

The Sweet Spot groups the original color and five complimentary colors.



79, 17.345, 22.543



96, 5.350, 21.469



80, 29.085, 325.985



51, 3.558, 21.520



0, 0.000, 0.000



53, 0.007, 296.813

Same Dimension

The Same Dimension uses a secret algorithm to generate beautiful new colors.



79, 17.345, 22.543



84, 23.006, 22.922



85, 15.156, 74.670



45, 4.713, 21.723



37, 79.681, 40.218



7, 26.686, 22.857

Inverse Universe

The Inverse Universe completely reimagines the original color for something new.



88, 15.176, 200.408



96, 19.526, 200.243



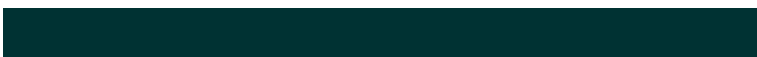
82, 14.453, 260.128



47, 4.437, 200.900



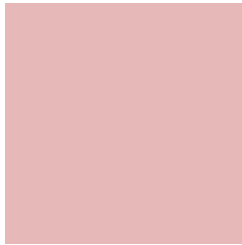
65, 37.193, 199.844



18, 15.679, 199.296

Previews

White Background



This preview shows how the CIELCh color 79, 17.347, 22.536 looks on a white background.

Color Contrast Check

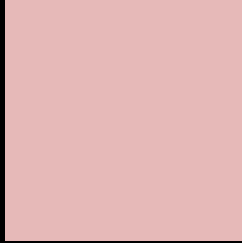
Large Text (above 18pt) WCAG AA × Fail

Any Text WCAG AA × Fail

Large Text (above 18pt) WCAG AAA × Fail

Any Text WCAG AAA × Fail

Black Background



This preview shows how the CIELCh color 79, 17.347, 22.536 looks on a black background.

Color Contrast Check

Large Text (above 18pt) WCAG AA ✓ Pass

Any Text WCAG AA ✓ Pass

Large Text (above 18pt) WCAG AAA ✓ Pass

Any Text WCAG AAA ✓ Pass

If you want to check with other color combinations, try the [Color Contrast Checker](#).

CIELCh 79, 17.347, 22.536

Background



This preview shows how black text looks on a background with the CIELCh color 79, 17.347, 22.536.

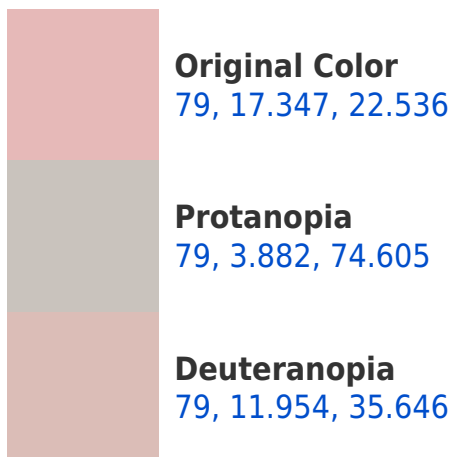


This preview shows how white text looks on a background with the CIELCh color 79, 17.347, 22.536.

Color Blindness Simulation

Color vision deficiency is a very complex topic, and I could not describe the different causes any better than Wikipedia does, so if you want to learn more, you should check out their [article about color blindness](#).

Dichromacy





Tritanopia
79, 19.463, 358.675

Trichromacy



Original Color
79, 17.347, 22.536

Protanomaly
79, 8.229, 34.890

Deuteranomaly
79, 13.736, 31.510

Tritanomaly
79, 18.298, 7.580

Monochromacy



Original Color
79, 17.347, 22.536

Achromatopsia
80, 0.010, 296.813

Achromatomaly
79, 6.352, 19.823

CSS Examples

Text

The CSS property to change the color of the text to CIELCh 79, 17.347, 22.536 is called "color". The color property can be set on classes, ids or directly on the HTML element.

This example shows how text in the color `rgb(230, 185, 184)` looks like.

```
.text, #text, p{  
    color:rgb(230, 185, 184)  
}
```

If you want to add a text shadow in that color use the text-shadow property, you can generate a text shadow directly with our [CSS Text Shadow Generator](#).

Here you see how black text with a 4 pixel rgb(230, 185, 184) colored shadow looks like.

```
.shadow{ text-shadow: 4px 4px 2px rgb(230, 185, 184) }
```

Border

The CSS property to change the border of an element to CIELCh 79, 17.347, 22.536 is called "border". The border property can be set on classes, ids or directly on the HTML element.

This example shows the color as border, it can be applied via the CSS property "border" or "border-color".

```
.border, #border, table{ border:4px solid rgb(230, 185, 184) }
```

If only the border color should be changed use the property border-color.

```
.border{ border-color:rgb(230, 185, 184) }
```

If you want to add a box shadow in that color use:

Here you see how a box with a 4 pixel rgb(230, 185, 184) colored shadow looks like.

```
.boxshadow{ -moz-box-shadow:4px 4px 4px  
4px rgb(230, 185, 184); -webkit-box-  
shadow:4px 4px 4px 4px rgb(230, 185, 184);  
box-shadow:4px 4px 4px 4px rgb(230, 185,  
184) }
```

Background

The CSS property to change the background color of an element to CIELCh 79, 17.347, 22.536 is called "background". The background property can be set on classes, ids or directly on the HTML element.

```
.background, #background, body{  
background: rgb(230, 185, 184) }
```

If only the background color should be changed can be used:

```
.background{ background-color: rgb(230,  
185, 184) }
```

This example shows the color as background, it is applied via the CSS property "background".

To optimize and compress your CSS code, you can use our [online CSS compressor and optimizer](#) based on csstidy. If you want to create a linear or radial gradient as background or border, check our [CSS Gradient Generator](#).

Hey! You found this booklet interesting? Support Converting Colors with the new Membership Option!

The pro membership hides all ads, plus gives you double the colors in the color bucket, and more awesome pro features!

[Learn more, Memberships starting at \\$2.50/m!](#)

**Follow me
on Twitter!**

@ConvertingColor