

Converting Colors

CIELCh(79, 19.013, 39.174)

Have a look what the booklet for
CIELCh(79, 19.013, 39.174) contains.

CIELCh(79, 19.078, 38.451)	3
<i>Conversions</i>	4
<i>Details</i>	6
<i>Harmonies</i>	11
<i>Previews</i>	20
<i>Color Blindness Simulation</i>	23
<i>CSS Examples</i>	26

Color

CIELCh(79, 19.078, 38.451)

Conversions

Conversions Part 1

Format	Color
Hex	E7B9AE
RGB	231, 185, 174
RGB Percent	91%, 73%, 68%
CMY	0.0929, 0.2733, 0.3165
CMYK	0.00, 0.20, 0.25, 0.09
HSL	12°, 55%, 80%
HSV	12°, 25%, 91%
XYZ	58.1335, 54.9284, 47.7306
YIQ	197.5000, 30.9470, 6.3310

Conversions

Conversions Part 2

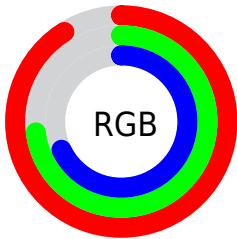
Format	Color
RYB	231, 188, 174
Decimal	15186350
CIELab	79.00, 14.94, 11.86
CIELCh	79, 19.078, 38.451
Yxy	54.9284, 0.3615, 0.3416
Android (android.graphics.Color)	4293376430 (0xFFE7B9AE)
YUV	197.5000, -11.5855, 29.3795
Hunter-Lab	74.1137, 10.3134, 13.6957

Details

The CIELCh color **79, 19.078, 38.451** is a light color, and the websafe version is hex **FFCCCC**. A complement of this color would be **85, 16.126, 219.625**, and the grayscale version is **80, 0.010, 296.813**.

A 20% lighter version of the original color is **96, 7.949, 69.887**, and **59, 19.138, 38.090** is the 20% darker color. If you saturate the color by 10%, you get **74, 27.968, 38.629**, and if you desaturate by 10%, it is **84, 10.873, 38.429**.

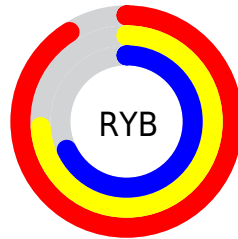
Distribution



Red (91%)

Green (73%)

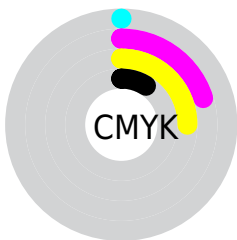
Blue (68%)



Red (91%)

Yellow (74%)

Blue (68%)

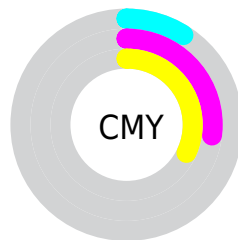


Cyan (0%)

Magenta (20%)

Yellow (25%)

Black (9%)



Cyan (9%)

Magenta (27%)

Yellow (32%)


Brightness & Saturation Gradients

These gradients show how the CIELCh color 79, 19.078, 38.451 changes by changing the brightness by 10 percent. The first figure shows a shift by +10% for each color and the second figure -10%.

Similar to the brightness gradients but the following saturation gradients show a change of the CIELCh color 79, 19.078, 38.451 by changing the saturation by 10% instead.

 79, 19.078, 38.451

 79, 19.078, 38.451

 100, 19.078,
38.451

 69, 19.078, 38.451

 99, 19.078, 38.451

 59, 19.078, 38.451

 49, 19.078, 38.451

 39, 19.078, 38.451

 29, 19.078, 38.451

 19, 19.078, 38.451

 9, 19.078, 38.451

 0, 19.078, 38.451

 79, 19.078, 38.451

 79, 19.078, 38.451

74, 27.968, 38.629

84, 10.873, 38.429

69, 37.563, 38.988

89, 3.311, 38.412

65, 47.828, 39.576

95, 3.665, 218.961

61, 58.642, 40.412

98, 8.085, 198.976

57, 69.711, 41.449

54, 80.377, 42.477

52, 89.203, 42.928

51, 92.877, 42.958

Harmonies

Complementary

The Complementary color scheme is a pair of colors which are on the opposite of each other on the color wheel.



79, 19.078, 38.451



85, 16.126, 219.625

Rectangle

The Rectangle color scheme consists of four colors that form a rectangle on the color wheel.



79, 19.078, 38.451



79, 19.078, 88.451



79, 19.078, 218.451



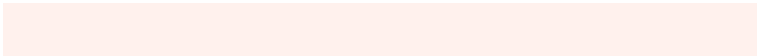
79, 19.078, 268.451

Sweetspot

The Sweet Spot groups the original color and five complimentary colors.



79, 19.077, 38.459



96, 5.448, 38.440



78, 32.129, 331.499



51, 3.549, 38.442



0, 0.000, 0.000



53, 0.007, 296.813

Same Dimension

The Same Dimension uses a secret algorithm to generate beautiful new colors.



79, 19.077, 38.459



83, 25.717, 38.532



86, 21.546, 89.295



45, 4.099, 38.441



39, 76.088, 43.352



8, 23.743, 32.797

Inverse Universe

The Inverse Universe completely reimagines the original color for something new.



85, 16.126, 219.625



91, 20.823, 219.974



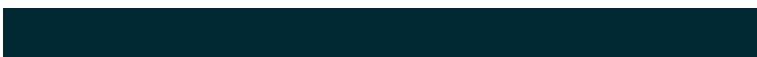
78, 21.532, 276.071



47, 3.862, 219.008



55, 33.508, 233.947



15, 13.980, 227.461

Previews

White Background



This preview shows how the CIELCh color 79, 19.078, 38.451 looks on a white background.

Color Contrast Check

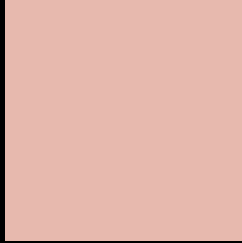
Large Text (above 18pt) WCAG AA × Fail

Any Text WCAG AA × Fail

Large Text (above 18pt) WCAG AAA × Fail

Any Text WCAG AAA × Fail

Black Background



This preview shows how the CIELCh color 79, 19.078, 38.451 looks on a black background.

Color Contrast Check

Large Text (above 18pt) WCAG AA ✓ Pass

Any Text WCAG AA ✓ Pass

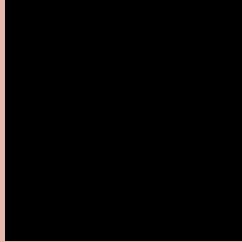
Large Text (above 18pt) WCAG AAA ✓ Pass

Any Text WCAG AAA ✓ Pass

If you want to check with other color combinations, try the [Color Contrast Checker](#).

CIELCh 79, 19.078, 38.451

Background



This preview shows how black text looks on a background with the CIELCh color 79, 19.078, 38.451.

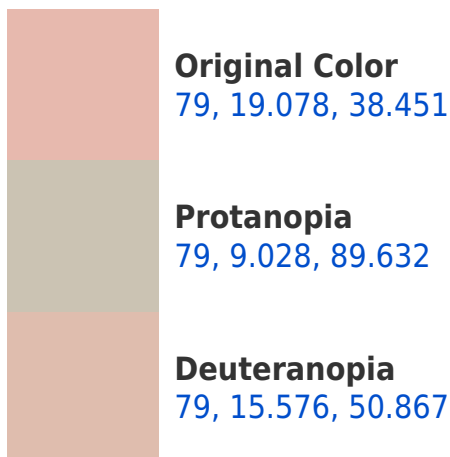


This preview shows how white text looks on a background with the CIELCh color 79, 19.078, 38.451.

Color Blindness Simulation

Color vision deficiency is a very complex topic, and I could not describe the different causes any better than Wikipedia does, so if you want to learn more, you should check out their [article about color blindness](#).

Dichromacy





Tritanopia
79, 20.903, 0.453

Trichromacy



Original Color
79, 19.078, 38.451

Protanomaly
79, 11.321, 60.855

Deuteranomaly
79, 16.726, 46.654

Tritanomaly
79, 19.288, 13.155

Monochromacy



Original Color
79, 19.078, 38.451

Achromatopsia
80, 0.010, 296.813

Achromatomaly
79, 6.739, 38.155

CSS Examples

Text

The CSS property to change the color of the text to CIELCh 79, 19.078, 38.451 is called "color". The color property can be set on classes, ids or directly on the HTML element.

This example shows how text in the color `rgb(231, 185, 174)` looks like.

```
.text, #text, p{  
    color:rgb(231, 185, 174)  
}
```

If you want to add a text shadow in that color use the text-shadow property, you can generate a text shadow directly with our [CSS Text Shadow Generator](#).

Here you see how black text with a 4 pixel rgb(231, 185, 174) colored shadow looks like.

```
.shadow{ text-shadow: 4px 4px 2px rgb(231, 185, 174) }
```

Border

The CSS property to change the border of an element to CIELCh 79, 19.078, 38.451 is called "border". The border property can be set on classes, ids or directly on the HTML element.

This example shows the color as border, it can be applied via the CSS property "border" or "border-color".

```
.border, #border, table{ border:4px solid rgb(231, 185, 174) }
```

If only the border color should be changed use the property `border-color`.

```
.border{ border-color:rgb(231, 185, 174) }
```

If you want to add a box shadow in that color use:

Here you see how a box with a 4 pixel `rgb(231, 185, 174)` colored shadow looks like.

```
.boxshadow{ -moz-box-shadow:4px 4px 4px 4px rgb(231, 185, 174); -webkit-box-shadow:4px 4px 4px 4px rgb(231, 185, 174); box-shadow:4px 4px 4px 4px rgb(231, 185, 174) }
```

Background

The CSS property to change the background color of an element to CIELCh 79, 19.078, 38.451 is called "background". The background property can be set on classes, ids or directly on the HTML element.

```
.background, #background, body{  
background: rgb(231, 185, 174) }
```

If only the background color should be changed can be used:

```
.background{ background-color: rgb(231,  
185, 174) }
```

This example shows the color as background, it is applied via the CSS property "background".

To optimize and compress your CSS code, you can use our [online CSS compressor and optimizer](#) based on csstidy. If you want to create a linear or radial gradient as background or border, check our [CSS Gradient Generator](#).

Hey! You found this booklet interesting? Support Converting Colors with the new Membership Option!

The pro membership hides all ads, plus gives you double the colors in the color bucket, and more awesome pro features!

[Learn more, Memberships starting at \\$2.50/m!](#)

**Follow me
on Twitter!**

@ConvertingColor