

Converting Colors

CIELCh(79, 20.400, 6.135)

Have a look what the booklet for
CIELCh(79, 20.400, 6.135) contains.

CIELCh(79, 20.400, 6.135)	3
<i>Conversions</i>	4
<i>Details</i>	6
<i>Harmonies</i>	11
<i>Previews</i>	20
<i>Color Blindness Simulation</i>	23
<i>CSS Examples</i>	26

Color

CIELCh(79, 20.400, 6.135)

Conversions

Conversions Part 1

Format	Color
Hex	EAB6C0
RGB	234, 182, 192
RGB Percent	92%, 71%, 75%
CMY	0.0812, 0.2852, 0.2460
CMYK	0.00, 0.22, 0.18, 0.08
HSL	348°, 56%, 82%
HSV	348°, 22%, 92%
XYZ	60.3565, 54.9284, 57.4511
YIQ	198.6880, 27.7820, 14.1340

Conversions

Conversions Part 2

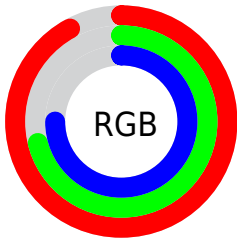
Format	Color
RYB	234, 182, 192
Decimal	15382208
CIELab	79.00, 20.28, 2.18
CIELCh	79, 20.400, 6.135
Yxy	54.9284, 0.3494, 0.3180
Android (android.graphics.Color)	4293572288 (0xFFEAB6C0)
YUV	198.6880, -3.2972, 30.9686
Hunter-Lab	74.1137, 15.6675, 5.9194

Details

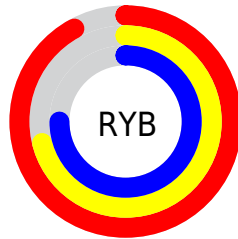
The CIELCh color **79, 20.400, 6.135** is a light color, and the websafe version is hex **FFCCCC**. A complement of this color would be **89, 18.587, 181.846**, and the grayscale version is **80, 0.010, 296.813**.

A 20% lighter version of the original color is **96, 7.929, 339.639**, and **59, 20.519, 5.890** is the 20% darker color. If you saturate the color by 10%, you get **73, 30.264, 7.537**, and if you desaturate by 10%, it is **85, 10.924, 4.964**.

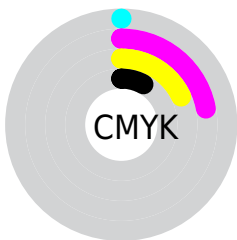
Distribution



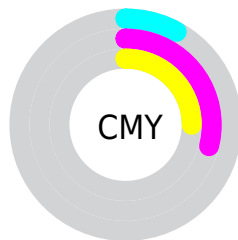
- Red (92%)
- Green (71%)
- Blue (75%)



- Red (92%)
- Yellow (71%)
- Blue (75%)



- Cyan (0%)
- Magenta (22%)
- Yellow (18%)
- Black (8%)



- Cyan (8%)
- Magenta (29%)
- Yellow (25%)

Brightness & Saturation Gradients

These gradients show how the CIELCh color 79, 20.400, 6.135 changes by changing the brightness by 10 percent. The first figure shows a shift by +10% for each color and the second figure -10%.

Similar to the brightness gradients but the following saturation gradients show a change of the CIELCh color 79, 20.400, 6.135 by changing the saturation by 10% instead.

 79, 20.400, 6.135  79, 20.400, 6.135

 100, 20.400, 6.135  69, 20.400, 6.135

 99, 20.400, 6.135  59, 20.400, 6.135

 49, 20.400, 6.135

 39, 20.400, 6.135

 29, 20.400, 6.135

 19, 20.400, 6.135

 9, 20.400, 6.135

 0, 20.400, 6.135

 79, 20.400, 6.135  79, 20.400, 6.135

73, 30.264, 7.537

85, 10.924, 4.964

68, 40.367, 9.247

91, 1.919, 3.743

62, 50.451, 11.383

98, 6.597, 183.296

58, 60.160, 14.085

99, 7.089, 199.050

54, 69.098, 17.511

52, 76.960, 21.772

50, 83.668, 26.813

49, 88.322, 30.916

Harmonies

Complementary

The Complementary color scheme is a pair of colors which are on the opposite of each other on the color wheel.



79, 20.400, 6.135



89, 18.587, 181.846

Rectangle

The Rectangle color scheme consists of four colors that form a rectangle on the color wheel.



79, 20.400, 6.135



79, 20.400, 56.135



79, 20.400, 186.135



79, 20.400, 236.135

Sweetspot

The Sweet Spot groups the original color and five complimentary colors.



79, 20.398, 6.140



95, 6.622, 4.402



79, 31.396, 319.797



50, 4.310, 4.468



0, 0.000, 0.000



53, 0.007, 296.813

Same Dimension

The Same Dimension uses a secret algorithm to generate beautiful new colors.



79, 20.398, 6.140



82, 26.884, 6.795



83, 16.420, 50.153



46, 5.055, 4.667



38, 72.173, 29.946



7, 27.922, 14.779

Inverse Universe

The Inverse Universe completely reimagines the original color for something new.



79, 20.398, 6.140



82, 26.884, 6.795



85, 14.421, 233.578



46, 5.055, 4.667



38, 72.173, 29.946



7, 27.922, 14.779

Previews

White Background



This preview shows how the CIELCh color 79, 20.400, 6.135 looks on a white background.

Color Contrast Check

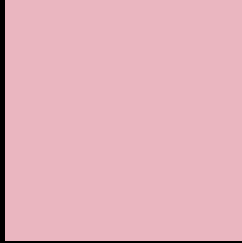
Large Text (above 18pt) WCAG AA × Fail

Any Text WCAG AA × Fail

Large Text (above 18pt) WCAG AAA × Fail

Any Text WCAG AAA × Fail

Black Background



This preview shows how the CIE LCh color 79, 20.400, 6.135 looks on a black background.

Color Contrast Check

Large Text (above 18pt) WCAG AA ✓ Pass

Any Text WCAG AA ✓ Pass

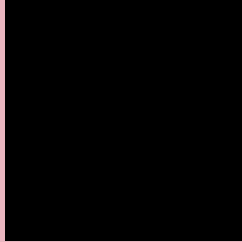
Large Text (above 18pt) WCAG AAA ✓ Pass

Any Text WCAG AAA ✓ Pass

If you want to check with other color combinations, try the [Color Contrast Checker](#).

CIELCh 79, 20.400, 6.135

Background



This preview shows how black text looks on a background with the CIELCh color 79, 20.400, 6.135.

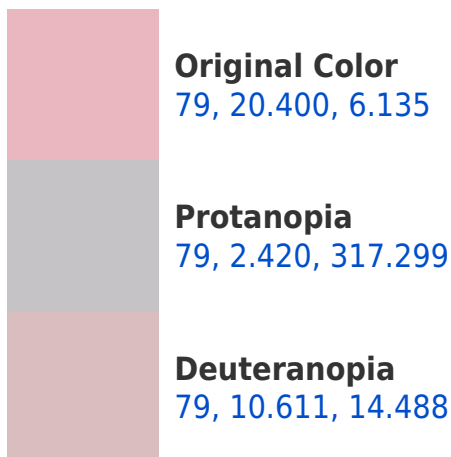


This preview shows how white text looks on a background with the CIELCh color 79, 20.400, 6.135.

Color Blindness Simulation

Color vision deficiency is a very complex topic, and I could not describe the different causes any better than Wikipedia does, so if you want to learn more, you should check out their [article about color blindness](#).

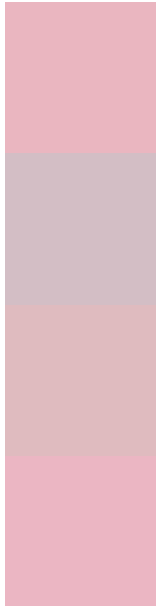
Dichromacy





Tritanopia
79, 21.261, 0.862

Trichromacy



Original Color
79, 20.400, 6.135

Protanomaly
79, 8.659, 354.576

Deuteranomaly
79, 13.784, 11.678

Tritanomaly
79, 21.120, 2.234

Monochromacy



Original Color
79, 20.400, 6.135

Achromatopsia
80, 0.010, 296.813

Achromatomaly
80, 7.383, 3.221

CSS Examples

Text

The CSS property to change the color of the text to CIELCh 79, 20.400, 6.135 is called "color". The color property can be set on classes, ids or directly on the HTML element.

This example shows how text in the color `rgb(234, 182, 192)` looks like.

```
.text, #text, p{  
    color:rgb(234, 182, 192)  
}
```

If you want to add a text shadow in that color use the text-shadow property, you can generate a text shadow directly with our [CSS Text Shadow Generator](#).

Here you see how black text with a 4 pixel rgb(234, 182, 192) colored shadow looks like.

```
.shadow{ text-shadow: 4px 4px 2px rgb(234, 182, 192) }
```

Border

The CSS property to change the border of an element to CIELCh 79, 20.400, 6.135 is called "border". The border property can be set on classes, ids or directly on the HTML element.

This example shows the color as border, it can be applied via the CSS property "border" or "border-color".

```
.border, #border, table{ border:4px solid rgb(234, 182, 192) }
```

If only the border color should be changed use the property `border-color`.

```
.border{ border-color:rgb(234, 182, 192) }
```

If you want to add a box shadow in that color use:

Here you see how a box with a 4 pixel `rgb(234, 182, 192)` colored shadow looks like.

```
.boxshadow{ -moz-box-shadow:4px 4px 4px  
4px rgb(234, 182, 192); -webkit-box-  
shadow:4px 4px 4px 4px rgb(234, 182, 192);  
box-shadow:4px 4px 4px 4px rgb(234, 182,  
192) }
```

Background

The CSS property to change the background color of an element to CIELCh 79, 20.400, 6.135 is called "background". The background property can be set on classes, ids or directly on the HTML element.

```
.background, #background, body{  
background: rgb(234, 182, 192) }
```

If only the background color should be changed can be used:

```
.background{ background-color: rgb(234,  
182, 192) }
```

This example shows the color as background, it is applied via the CSS property "background".

To optimize and compress your CSS code, you can use our [online CSS compressor and optimizer](#) based on csstidy. If you want to create a linear or radial gradient as background or border, check our [CSS Gradient Generator](#).

Hey! You found this booklet interesting? Support Converting Colors with the new Membership Option!

The pro membership hides all ads, plus gives you double the colors in the color bucket, and more awesome pro features!

[Learn more, Memberships starting at \\$2.50/m!](#)

**Follow me
on Twitter!**

@ConvertingColor