

Converting Colors

CIELCh(79, 22.979, 65.662)

Have a look what the booklet for
CIELCh(79, 22.979, 65.662) contains.

CIELCh(79, 23.001, 65.488)	3
<i>Conversions</i>	4
<i>Details</i>	6
<i>Harmonies</i>	11
<i>Previews</i>	20
<i>Color Blindness Simulation</i>	23
<i>CSS Examples</i>	26

Color

CIELCh(79, 23.001, 65.488)

Conversions

Conversions Part 1

Format	Color
Hex	E3BC9D
RGB	227, 188, 157
RGB Percent	89%, 74%, 62%
CMY	0.1085, 0.2615, 0.3831
CMYK	0.00, 0.17, 0.31, 0.11
HSL	27°, 56%, 75%
HSV	27°, 31%, 89%
XYZ	55.9435, 54.9284, 39.6870
YIQ	196.1270, 33.1950, -1.3730

Conversions

Conversions Part 2

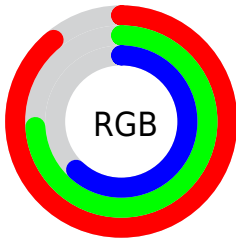
Format	Color
R _Y B	227, 213, 157
Decimal	14924957
CIE Lab	79.00, 9.54, 20.93
CIE LCh	79, 23.001, 65.488
Yxy	54.9284, 0.3716, 0.3648
Android (android.graphics.Color)	4293115037 (0xFFE3BC9D)
YUV	196.1270, -19.2896, 27.0756
Hunter-Lab	74.1137, 5.0389, 20.1305

Details

The CIELCh color **79, 23.001, 65.488** is a light color, and the websafe version is hex **FFCC99**. A complement of this color would be **78, 20.456, 253.640**, and the grayscale version is **79, 0.010, 296.813**.

A 20% lighter version of the original color is **96, 16.808, 94.787**, and **59, 22.962, 65.122** is the 20% darker color. If you saturate the color by 10%, you get **75, 31.366, 64.389**, and if you desaturate by 10%, it is **83, 15.091, 66.612**.

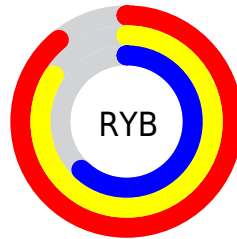
Distribution



Red (89%)

Green (74%)

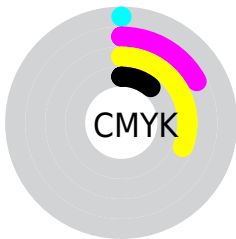
Blue (62%)



Red (89%)

Yellow (84%)

Blue (62%)

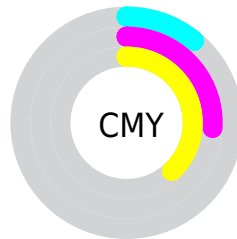


Cyan (0%)

Magenta (17%)

Yellow (31%)

Black (11%)



Cyan (11%)

Magenta (26%)

Yellow (38%)

Brightness & Saturation Gradients

These gradients show how the CIELCh color 79, 23.001, 65.488 changes by changing the brightness by 10 percent. The first figure shows a shift by +10% for each color and the second figure -10%.

Similar to the brightness gradients but the following saturation gradients show a change of the CIELCh color 79, 23.001, 65.488 by changing the saturation by 10% instead.

79, 23.001, 65.488

79, 23.001, 65.488

100, 23.001,
65.488

69, 23.001, 65.488

99, 23.001, 65.488

59, 23.001, 65.488

49, 23.001, 65.488

39, 23.001, 65.488

29, 23.001, 65.488

19, 23.001, 65.488

9, 23.001, 65.488

0, 23.001, 65.488

79, 23.001, 65.488

79, 23.001, 65.488

75, 31.366, 64.389

83, 15.091, 66.612

72, 40.174, 63.297

86, 7.617, 67.715

69, 49.341, 62.205

90, 0.545, 68.070

66, 58.648, 61.056

94, 6.166, 250.092

63, 67.605, 59.710

97, 8.401, 210.800

60, 75.276, 57.873

98, 9.406, 198.882

58, 80.537, 55.591

Harmonies

Complementary

The Complementary color scheme is a pair of colors which are on the opposite of each other on the color wheel.



79, 23.001, 65.488



78, 20.456, 253.640

Rectangle

The Rectangle color scheme consists of four colors that form a rectangle on the color wheel.



79, 23.001, 65.488



79, 23.001, 115.488



79, 23.001, 245.488



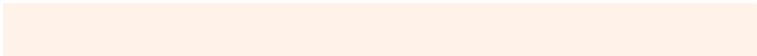
79, 23.001, 295.488

Sweetspot

The Sweet Spot groups the original color and five complimentary colors.



79, 23.001, 65.495



96, 6.931, 67.901



73, 33.403, 342.892



51, 4.836, 67.745



0, 0.000, 0.000



53, 0.007, 296.813

Same Dimension

The Same Dimension uses a secret algorithm to generate beautiful new colors.



79, 23.001, 65.495



85, 30.898, 64.782



88, 33.712, 104.182



46, 4.020, 67.858



46, 66.915, 56.237



11, 21.036, 54.419

Inverse Universe

The Inverse Universe completely reimagines the original color for something new.



78, 20.456, 253.640



83, 26.719, 254.986



68, 35.976, 291.373



46, 3.898, 250.215



42, 49.094, 277.735



10, 17.955, 268.556

Previews

White Background



This preview shows how the CIELCh color 79, 23.001, 65.488 looks on a white background.

Color Contrast Check

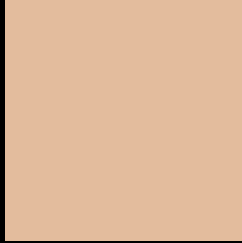
Large Text (above 18pt) WCAG AA × Fail

Any Text WCAG AA × Fail

Large Text (above 18pt) WCAG AAA × Fail

Any Text WCAG AAA × Fail

Black Background



This preview shows how the CIELCh color 79, 23.001, 65.488 looks on a black background.

Color Contrast Check

Large Text (above 18pt) WCAG AA ✓ Pass

Any Text WCAG AA ✓ Pass

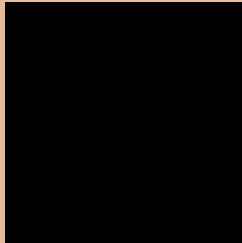
Large Text (above 18pt) WCAG AAA ✓ Pass

Any Text WCAG AAA ✓ Pass

If you want to check with other color combinations, try the [Color Contrast Checker](#).

CIELCh 79, 23.001, 65.488

Background



This preview shows how black text looks on a background with the CIELCh color 79, 23.001, 65.488.

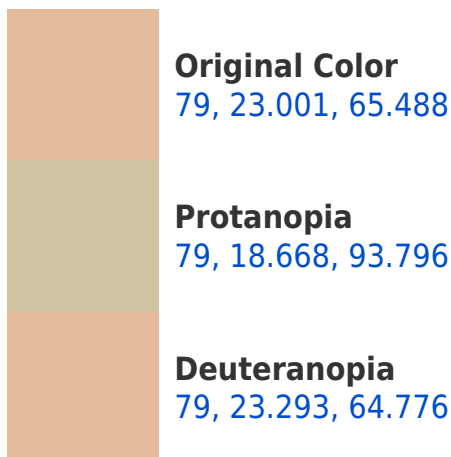


This preview shows how white text looks on a background with the CIELCh color 79, 23.001, 65.488.

Color Blindness Simulation

Color vision deficiency is a very complex topic, and I could not describe the different causes any better than Wikipedia does, so if you want to learn more, you should check out their [article about color blindness](#).

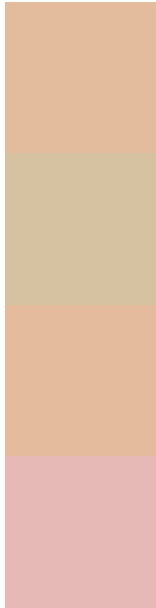
Dichromacy





Tritanopia
79, 19.816, 359.138

Trichromacy



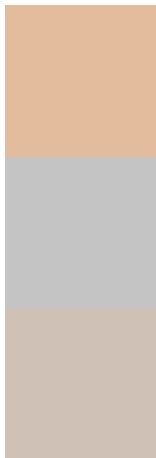
Original Color
79, 23.001, 65.488

Protanomaly
79, 19.475, 83.139

Deuteranomaly
79, 23.293, 64.776

Tritanomaly
79, 17.411, 24.262

Monochromacy



Original Color
79, 23.001, 65.488

Achromatopsia
79, 0.010, 296.813

Achromatomaly
79, 7.909, 67.255

CSS Examples

Text

The CSS property to change the color of the text to CIELCh 79, 23.001, 65.488 is called "color". The color property can be set on classes, ids or directly on the HTML element.

This example shows how text in the color `rgb(227, 188, 157)` looks like.

```
.text, #text, p{  
    color:rgb(227, 188, 157)  
}
```

If you want to add a text shadow in that color use the text-shadow property, you can generate a text shadow directly with our [CSS Text Shadow Generator](#).

Here you see how black text with a 4 pixel rgb(227, 188, 157) colored shadow looks like.

```
.shadow{ text-shadow: 4px 4px 2px rgb(227, 188, 157) }
```

Border

The CSS property to change the border of an element to CIELCh 79, 23.001, 65.488 is called "border". The border property can be set on classes, ids or directly on the HTML element.

This example shows the color as border, it can be applied via the CSS property "border" or "border-color".

```
.border, #border, table{ border:4px solid rgb(227, 188, 157) }
```

If only the border color should be changed use the property `border-color`.

```
.border{ border-color:rgb(227, 188, 157) }
```

If you want to add a box shadow in that color use:

Here you see how a box with a 4 pixel `rgb(227, 188, 157)` colored shadow looks like.

```
.boxshadow{ -moz-box-shadow:4px 4px 4px  
4px rgb(227, 188, 157); -webkit-box-  
shadow:4px 4px 4px 4px rgb(227, 188, 157);  
box-shadow:4px 4px 4px 4px rgb(227, 188,  
157) }
```

Background

The CSS property to change the background color of an element to CIELCh 79, 23.001, 65.488 is called "background". The background property can be set on classes, ids or directly on the HTML element.

```
.background, #background, body{  
background: rgb(227, 188, 157) }
```

If only the background color should be changed can be used:

```
.background{ background-color: rgb(227,  
188, 157) }
```

This example shows the color as background, it is applied via the CSS property "background".

To optimize and compress your CSS code, you can use our [online CSS compressor and optimizer](#) based on csstidy. If you want to create a linear or radial gradient as background or border, check our [CSS Gradient Generator](#).

Hey! You found this booklet interesting? Support Converting Colors with the new Membership Option!

The pro membership hides all ads, plus gives you double the colors in the color bucket, and more awesome pro features!

[Learn more, Memberships starting at \\$2.50/m!](#)

**Follow me
on Twitter!**

@ConvertingColor