

Converting Colors

CIELCh(79, 25.235, 72.598)

Have a look what the booklet for
CIELCh(79, 25.235, 72.598) contains.

CIELCh(79, 25.412, 71.961)	3
<i>Conversions</i>	4
<i>Details</i>	6
<i>Harmonies</i>	11
<i>Previews</i>	20
<i>Color Blindness Simulation</i>	23
<i>CSS Examples</i>	26

Color

CIELCh(79, 25.412, 71.961)

Conversions

Conversions Part 1

Format	Color
Hex	E2BD97
RGB	226, 189, 151
RGB Percent	89%, 74%, 59%
CMY	0.1129, 0.2580, 0.4071
CMYK	0.00, 0.16, 0.33, 0.11
HSL	30°, 57%, 74%
HSV	30°, 33%, 89%
XYZ	55.2759, 54.9284, 37.0517
YIQ	195.7310, 34.2500, -3.9740

Conversions

Conversions Part 2

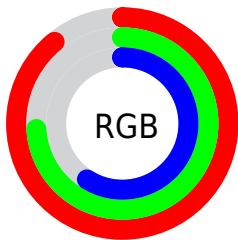
Format	Color
R_{YB}	224, 226, 151
Decimal	14859671
CIE _{Lab}	79.00, 7.87, 24.16
CIE _{LCh}	79, 25.412, 71.961
Yxy	54.9284, 0.3754, 0.3730
Android (android.graphics.Color)	4293049751 (0xFFE2BD97)
YUV	195.7310, -22.0524, 26.5459
Hunter-Lab	74.1137, 3.4309, 22.2387

Details

The CIELCh color **79, 25.412, 71.961** is a light color, and the websafe version is hex **FFCC99**. A complement of this color would be **75, 23.244, 261.549**, and the grayscale version is **79, 0.010, 296.813**.

A 20% lighter version of the original color is **96, 20.695, 98.116**, and **59, 25.235, 72.598** is the 20% darker color. If you saturate the color by 10%, you get **76, 33.841, 70.682**, and if you desaturate by 10%, it is **82, 17.340, 73.237**.

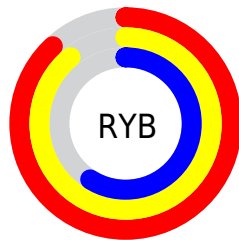
Distribution



Red (89%)

Green (74%)

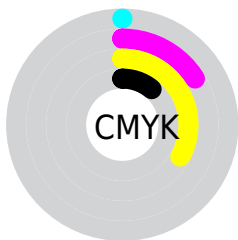
Blue (59%)



Red (88%)

Yellow (89%)

Blue (59%)

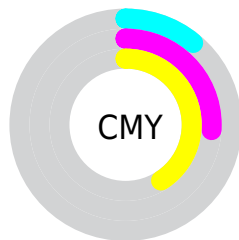


Cyan (0%)

Magenta (16%)

Yellow (33%)

Black (11%)



Cyan (11%)

Magenta (26%)

Yellow (41%)

Brightness & Saturation Gradients

These gradients show how the CIELCh color 79, 25.412, 71.961 changes by changing the brightness by 10 percent. The first figure shows a shift by +10% for each color and the second figure -10%.

Similar to the brightness gradients but the following saturation gradients show a change of the CIELCh color 79, 25.412, 71.961 by changing the saturation by 10% instead.

79, 25.412, 71.961

79, 25.412, 71.961

100, 25.412,
71.961

69, 25.412, 71.961

99, 25.412, 71.961

59, 25.412, 71.961

49, 25.412, 71.961

39, 25.412, 71.961

29, 25.412, 71.961

19, 25.412, 71.961

9, 25.412, 71.961

0, 25.412, 71.961

79, 25.412, 71.961

79, 25.412, 71.961

76, 33.841, 70.682

82, 17.340, 73.237

73, 42.581, 69.378

86, 9.628, 74.479

70, 51.498, 68.028

89, 2.256, 75.582

67, 60.288, 66.564

92, 4.804, 257.049

64, 68.346, 64.828

95, 8.090, 238.582

62, 74.672, 62.524

98, 9.772, 198.856

60, 77.857, 60.613

Harmonies

Complementary

The Complementary color scheme is a pair of colors which are on the opposite of each other on the color wheel.



79, 25.412, 71.961



75, 23.244, 261.549

Rectangle

The Rectangle color scheme consists of four colors that form a rectangle on the color wheel.



79, 25.412, 71.961



79, 25.412, 121.961



79, 25.412, 251.961



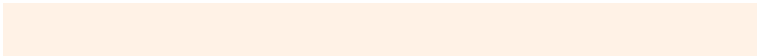
79, 25.412, 301.961

Sweetspot

The Sweet Spot groups the original color and five complimentary colors.



79, 25.412, 71.968



96, 8.004, 74.852



71, 34.386, 346.816



51, 5.479, 74.683



0, 0.000, 0.000



53, 0.007, 296.813

Same Dimension

The Same Dimension uses a secret algorithm to generate beautiful new colors.



79, 25.412, 71.968



86, 34.337, 71.056



88, 38.410, 106.967



45, 4.091, 74.926



47, 64.314, 61.292



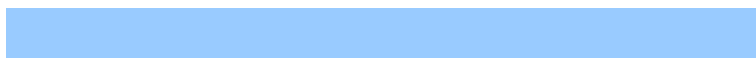
11, 19.650, 60.991

Inverse Universe

The Inverse Universe completely reimagines the original color for something new.



75, 23.244, 261.549



80, 30.743, 263.161



65, 41.713, 294.397



45, 4.006, 257.439



38, 55.216, 284.551



8, 19.189, 275.363

Previews

White Background



This preview shows how the CIELCh color 79, 25.412, 71.961 looks on a white background.

Color Contrast Check

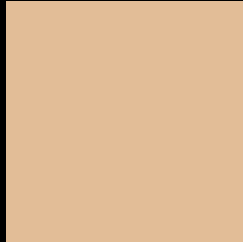
Large Text (above 18pt) WCAG AA × Fail

Any Text WCAG AA × Fail

Large Text (above 18pt) WCAG AAA × Fail

Any Text WCAG AAA × Fail

Black Background



This preview shows how the CIELCh color 79, 25.412, 71.961 looks on a black background.

Color Contrast Check

Large Text (above 18pt) WCAG AA ✓ Pass

Any Text WCAG AA ✓ Pass

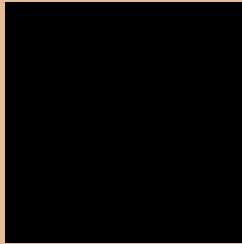
Large Text (above 18pt) WCAG AAA ✓ Pass

Any Text WCAG AAA ✓ Pass

If you want to check with other color combinations, try the [Color Contrast Checker](#).

CIELCh 79, 25.412, 71.961

Background



This preview shows how black text looks on a background with the CIELCh color 79, 25.412, 71.961.

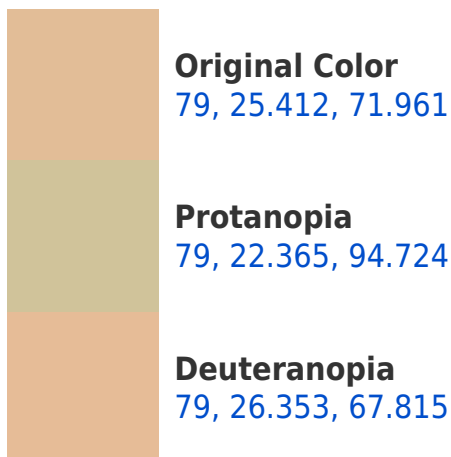


This preview shows how white text looks on a background with the CIELCh color 79, 25.412, 71.961.

Color Blindness Simulation

Color vision deficiency is a very complex topic, and I could not describe the different causes any better than Wikipedia does, so if you want to learn more, you should check out their [article about color blindness](#).

Dichromacy





Tritanopia
79, 19.463, 358.675

Trichromacy



Original Color
79, 25.412, 71.961

Protanomaly
79, 23.074, 85.626

Deuteranomaly
79, 26.074, 68.485

Tritanomaly
79, 17.307, 29.505

Monochromacy



Original Color
79, 25.412, 71.961

Achromatopsia
79, 0.010, 296.813

Achromatomaly
79, 8.944, 75.744

CSS Examples

Text

The CSS property to change the color of the text to CIELCh 79, 25.412, 71.961 is called "color". The color property can be set on classes, ids or directly on the HTML element.

This example shows how text in the color `rgb(226, 189, 151)` looks like.

```
.text, #text, p{  
    color:rgb(226, 189, 151)  
}
```

If you want to add a text shadow in that color use the text-shadow property, you can generate a text shadow directly with our [CSS Text Shadow Generator](#).

Here you see how black text with a 4 pixel rgb(226, 189, 151) colored shadow looks like.

```
.shadow{ text-shadow: 4px 4px 2px rgb(226, 189, 151) }
```

Border

The CSS property to change the border of an element to CIELCh 79, 25.412, 71.961 is called "border". The border property can be set on classes, ids or directly on the HTML element.

This example shows the color as border, it can be applied via the CSS property "border" or "border-color".

```
.border, #border, table{ border:4px solid rgb(226, 189, 151) }
```

If only the border color should be changed use the property `border-color`.

```
.border{ border-color:rgb(226, 189, 151) }
```

If you want to add a box shadow in that color use:

Here you see how a box with a 4 pixel `rgb(226, 189, 151)` colored shadow looks like.

```
.boxshadow{ -moz-box-shadow:4px 4px 4px  
4px rgb(226, 189, 151); -webkit-box-  
shadow:4px 4px 4px 4px rgb(226, 189, 151);  
box-shadow:4px 4px 4px 4px rgb(226, 189,  
151) }
```

Background

The CSS property to change the background color of an element to CIELCh 79, 25.412, 71.961 is called "background". The background property can be set on classes, ids or directly on the HTML element.

```
.background, #background, body{  
background: rgb(226, 189, 151) }
```

If only the background color should be changed can be used:

```
.background{ background-color: rgb(226,  
189, 151) }
```

This example shows the color as background, it is applied via the CSS property "background".

To optimize and compress your CSS code, you can use our [online CSS compressor and optimizer](#) based on csstidy. If you want to create a linear or radial gradient as background or border, check our [CSS Gradient Generator](#).

Hey! You found this booklet interesting? Support Converting Colors with the new Membership Option!

The pro membership hides all ads, plus gives you double the colors in the color bucket, and more awesome pro features!

[Learn more, Memberships starting at \\$2.50/m!](#)

**Follow me
on Twitter!**

@ConvertingColor