

Converting Colors

CIELCh(79, 25.817, 60.427)

Have a look what the booklet for
CIELCh(79, 25.817, 60.427) contains.

CIELCh(79, 25.511, 60.248)	3
<i>Conversions</i>	4
<i>Details</i>	6
<i>Harmonies</i>	11
<i>Previews</i>	20
<i>Color Blindness Simulation</i>	23
<i>CSS Examples</i>	26

Color

CIELCh(79, 25.511, 60.248)

Conversions

Conversions Part 1

Format	Color
Hex	E9BA9B
RGB	233, 186, 155
RGB Percent	91%, 73%, 61%
CMY	0.0855, 0.2698, 0.3914
CMYK	0.00, 0.20, 0.33, 0.09
HSL	24°, 64%, 76%
HSV	24°, 33%, 91%
XYZ	57.2013, 54.9284, 38.6788
YIQ	196.5190, 37.9630, 0.3230

Conversions

Conversions Part 2

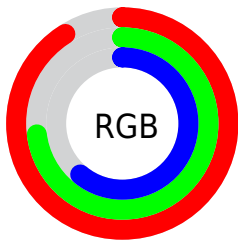
Format	Color
R _Y B	233, 206, 155
Decimal	15317659
CIE Lab	79.00, 12.66, 22.15
CIE LCh	79, 25.511, 60.248
Yxy	54.9284, 0.3793, 0.3642
Android (android.graphics.Color)	4293507739 (0xFFE9BA9B)
YUV	196.5190, -20.4689, 31.9938
Hunter-Lab	74.1137, 8.0681, 20.9370

Details

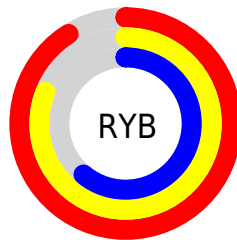
The CIELCh color **79, 25.511, 60.248** is a light color, and the websafe version is hex **FFCC99**. A complement of this color would be **79, 21.822, 248.406**, and the grayscale version is **79, 0.010, 296.813**.

A 20% lighter version of the original color is **96, 17.034, 92.314**, and **59, 25.377, 60.200** is the 20% darker color. If you saturate the color by 10%, you get **75, 34.246, 59.339**, and if you desaturate by 10%, it is **83, 17.307, 61.208**.

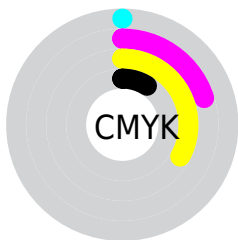
Distribution



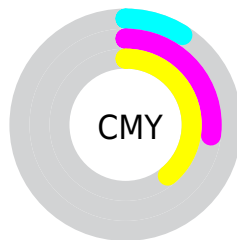
- Red (91%)
- Green (73%)
- Blue (61%)



- Red (91%)
- Yellow (81%)
- Blue (61%)



- Cyan (0%)
- Magenta (20%)
- Yellow (33%)
- Black (9%)



- Cyan (9%)
- Magenta (27%)
- Yellow (39%)

Brightness & Saturation Gradients

These gradients show how the CIELCh color 79, 25.511, 60.248 changes by changing the brightness by 10 percent. The first figure shows a shift by +10% for each color and the second figure -10%.

Similar to the brightness gradients but the following saturation gradients show a change of the CIELCh color 79, 25.511, 60.248 by changing the saturation by 10% instead.

 79, 25.511, 60.248

 79, 25.511, 60.248

 100, 25.511,
60.248

 69, 25.511, 60.248

 99, 25.511, 60.248

 59, 25.511, 60.248

 49, 25.511, 60.248

 39, 25.511, 60.248

 29, 25.511, 60.248

 19, 25.511, 60.248

 9, 25.511, 60.248

 0, 25.511, 60.248

 79, 25.511, 60.248

 79, 25.511, 60.248

75, 34.246, 59.339

83, 17.307, 61.208

72, 43.497, 58.466

87, 9.613, 62.179

68, 53.167, 57.617

91, 2.389, 63.033

65, 62.990, 56.720

95, 4.413, 244.371

62, 72.371, 55.594

98, 7.453, 199.023

59, 80.182, 53.862

57, 84.176, 52.390

Harmonies

Complementary

The Complementary color scheme is a pair of colors which are on the opposite of each other on the color wheel.



79, 25.511, 60.248



79, 21.822, 248.406

Rectangle

The Rectangle color scheme consists of four colors that form a rectangle on the color wheel.



79, 25.511, 60.248



79, 25.511, 110.248



79, 25.511, 240.248



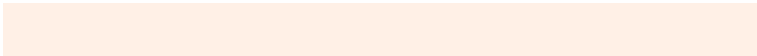
79, 25.511, 290.248

Sweetspot

The Sweet Spot groups the original color and five complimentary colors.



79, 25.511, 60.255



96, 7.599, 62.503



73, 38.237, 340.618



50, 5.208, 62.370



0, 0.000, 0.000



53, 0.007, 296.813

Same Dimension

The Same Dimension uses a secret algorithm to generate beautiful new colors.



79, 25.511, 60.255



83, 33.532, 59.633



88, 35.607, 101.342



47, 4.027, 62.558



45, 69.270, 53.029



11, 22.567, 50.287

Inverse Universe

The Inverse Universe completely reimagines the original color for something new.



79, 21.822, 248.406



83, 27.654, 249.819



69, 37.870, 289.603



47, 3.877, 244.720



45, 45.278, 271.917



11, 17.331, 263.012

Previews

White Background



This preview shows how the CIELCh color 79, 25.511, 60.248 looks on a white background.

Color Contrast Check

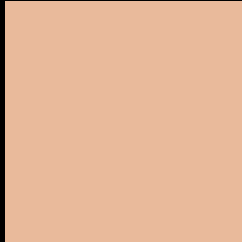
Large Text (above 18pt) WCAG AA × Fail

Any Text WCAG AA × Fail

Large Text (above 18pt) WCAG AAA × Fail

Any Text WCAG AAA × Fail

Black Background



This preview shows how the CIE LCh color 79, 25.511, 60.248 looks on a black background.

Color Contrast Check

Large Text (above 18pt) WCAG AA ✓ Pass

Any Text WCAG AA ✓ Pass

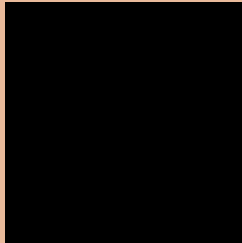
Large Text (above 18pt) WCAG AAA ✓ Pass

Any Text WCAG AAA ✓ Pass

If you want to check with other color combinations, try the [Color Contrast Checker](#).

CIELCh 79, 25.511, 60.248

Background



This preview shows how black text looks on a background with the CIELCh color 79, 25.511, 60.248.



This preview shows how white text looks on a background with the CIELCh color 79, 25.511, 60.248.

Color Blindness Simulation

Color vision deficiency is a very complex topic, and I could not describe the different causes any better than Wikipedia does, so if you want to learn more, you should check out their [article about color blindness](#).

Dichromacy



Original Color

79, 25.511, 60.248

Protanopia

79, 19.181, 94.125

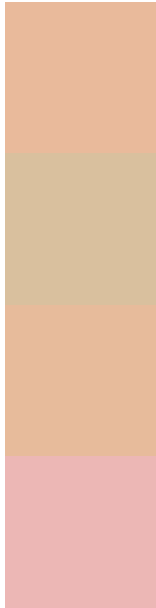
Deuteranopia

79, 24.401, 65.656



Tritanopia
79, 22.364, 2.029

Trichromacy



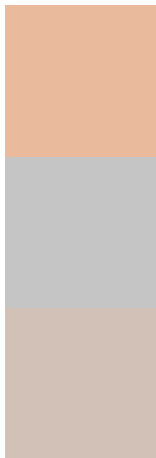
Original Color
79, 25.511, 60.248

Protanomaly
79, 20.737, 79.656

Deuteranomaly
79, 24.925, 62.889

Tritanomaly
79, 20.632, 23.999

Monochromacy



Original Color
79, 25.511, 60.248

Achromatopsia
80, 0.010, 296.813

Achromatomaly
79, 8.734, 61.656

CSS Examples

Text

The CSS property to change the color of the text to CIELCh 79, 25.511, 60.248 is called "color". The color property can be set on classes, ids or directly on the HTML element.

This example shows how text in the color `rgb(233, 186, 155)` looks like.

```
.text, #text, p{  
    color:rgb(233, 186, 155)  
}
```

If you want to add a text shadow in that color use the text-shadow property, you can generate a text shadow directly with our [CSS Text Shadow Generator](#).

Here you see how black text with a 4 pixel rgb(233, 186, 155) colored shadow looks like.

```
.shadow{ text-shadow: 4px 4px 2px rgb(233, 186, 155) }
```

Border

The CSS property to change the border of an element to CIELCh 79, 25.511, 60.248 is called "border". The border property can be set on classes, ids or directly on the HTML element.

This example shows the color as border, it can be applied via the CSS property "border" or "border-color".

```
.border, #border, table{ border:4px solid rgb(233, 186, 155) }
```

If only the border color should be changed use the property border-color.

```
.border{ border-color:rgb(233, 186, 155) }
```

If you want to add a box shadow in that color use:

Here you see how a box with a 4 pixel rgb(233, 186, 155) colored shadow looks like.

```
.boxshadow{ -moz-box-shadow:4px 4px 4px  
4px rgb(233, 186, 155); -webkit-box-  
shadow:4px 4px 4px 4px rgb(233, 186, 155);  
box-shadow:4px 4px 4px 4px rgb(233, 186,  
155) }
```

Background

The CSS property to change the background color of an element to CIELCh 79, 25.511, 60.248 is called "background". The background property can be set on classes, ids or directly on the HTML element.

```
.background, #background, body{  
background: rgb(233, 186, 155) }
```

If only the background color should be changed can be used:

```
.background{ background-color: rgb(233,  
186, 155) }
```

This example shows the color as background, it is applied via the CSS property "background".

To optimize and compress your CSS code, you can use our [online CSS compressor and optimizer](#) based on csstidy. If you want to create a linear or radial gradient as background or border, check our [CSS Gradient Generator](#).

Hey! You found this booklet interesting? Support Converting Colors with the new Membership Option!

The pro membership hides all ads, plus gives you double the colors in the color bucket, and more awesome pro features!

[Learn more, Memberships starting at \\$2.50/m!](#)

**Follow me
on Twitter!**

@ConvertingColor