

Converting Colors

CIELCh(79, 27.317, 39.267)

Have a look what the booklet for
CIELCh(79, 27.317, 39.267) contains.

CIELCh(79, 27.281, 39.265)	3
<i>Conversions</i>	4
<i>Details</i>	6
<i>Harmonies</i>	11
<i>Previews</i>	20
<i>Color Blindness Simulation</i>	23
<i>CSS Examples</i>	26

Color

CIELCh(79, 27.281, 39.265)

Conversions

Conversions Part 1

Format	Color
Hex	F5B5A5
RGB	245, 181, 165
RGB Percent	96%, 71%, 65%
CMY	0.0409, 0.2917, 0.3544
CMYK	0.00, 0.26, 0.33, 0.04
HSL	12°, 79%, 80%
HSV	12°, 33%, 96%
XYZ	60.7105, 54.9284, 42.8174
YIQ	198.3120, 43.2800, 8.5920

Conversions

Conversions Part 2

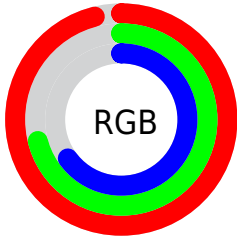
Format	Color
R _Y B	245, 185, 165
Decimal	16102821
CIE Lab	79.00, 21.12, 17.27
CIE LCh	79, 27.281, 39.265
Yxy	54.9284, 0.3831, 0.3466
Android (android.graphics.Color)	4294292901 (0xFFFF5B5A5)
YUV	198.3120, -16.4228, 40.9454
Hunter-Lab	74.1137, 16.5200, 17.6262

Details

The CIELCh color **79, 27.281, 39.265** is a light color, and the websafe version is hex **FFCCCC**. A complement of this color would be **87, 21.649, 221.105**, and the grayscale version is **80, 0.010, 296.813**.

A 20% lighter version of the original color is **95, 10.942, 72.148**, and **59, 27.210, 39.669** is the 20% darker color. If you saturate the color by 10%, you get **74, 37.142, 39.546**, and if you desaturate by 10%, it is **84, 18.153, 39.172**.

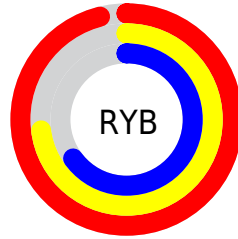
Distribution



Red (96%)

Green (71%)

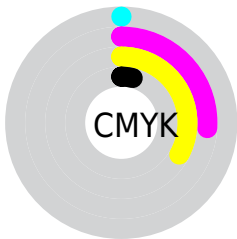
Blue (65%)



Red (96%)

Yellow (73%)

Blue (65%)

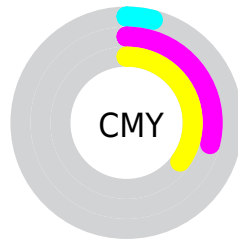


Cyan (0%)

Magenta (26%)

Yellow (33%)

Black (4%)



Cyan (4%)

Magenta (29%)

Yellow (35%)

Brightness & Saturation Gradients

These gradients show how the CIELCh color 79, 27.281, 39.265 changes by changing the brightness by 10 percent. The first figure shows a shift by +10% for each color and the second figure -10%.

Similar to the brightness gradients but the following saturation gradients show a change of the CIELCh color 79, 27.281, 39.265 by changing the saturation by 10% instead.

79, 27.281, 39.265

79, 27.281, 39.265

100, 27.281,
39.265

69, 27.281, 39.265

99, 27.281, 39.265

59, 27.281, 39.265

49, 27.281, 39.265

39, 27.281, 39.265

29, 27.281, 39.265

19, 27.281, 39.265

9, 27.281, 39.265

0, 27.281, 39.265

79, 27.281, 39.265

79, 27.281, 39.265

74, 37.142, 39.546

84, 18.153, 39.172

69, 47.720, 40.037

89, 9.738, 39.198

65, 58.910, 40.767

95, 1.981, 39.109

61, 70.450, 41.706

99, 3.601, 199.361

58, 81.739, 42.679

55, 91.445, 43.195

54, 96.700, 43.087

Harmonies

Complementary

The Complementary color scheme is a pair of colors which are on the opposite of each other on the color wheel.



79, 27.281, 39.265



87, 21.649, 221.105

Rectangle

The Rectangle color scheme consists of four colors that form a rectangle on the color wheel.



79, 27.281, 39.265



79, 27.281, 89.265



79, 27.281, 219.265



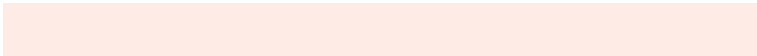
79, 27.281, 269.265

Sweetspot

The Sweet Spot groups the original color and five complimentary colors.



79, 27.279, 39.271



94, 7.848, 39.215



77, 43.975, 332.657



50, 5.386, 39.206



0, 0.000, 0.000



53, 0.007, 296.813

Same Dimension

The Same Dimension uses a secret algorithm to generate beautiful new colors.



79, 27.279, 39.271



79, 34.576, 39.424



89, 30.540, 89.514



48, 4.306, 39.218



41, 78.348, 43.491



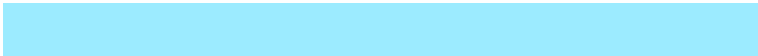
10, 27.474, 35.838

Inverse Universe

The Inverse Universe completely reimagines the original color for something new.



87, 21.649, 221.105



89, 26.010, 221.685



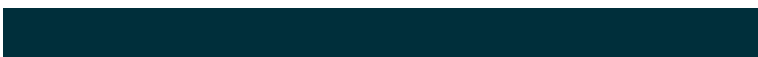
77, 30.736, 278.820



50, 4.057, 219.850



57, 34.686, 235.601



17, 15.292, 229.816

Previews

White Background



This preview shows how the CIELCh color 79, 27.281, 39.265 looks on a white background.

Color Contrast Check

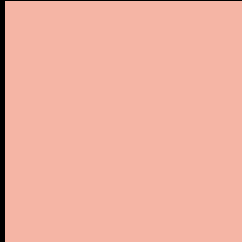
Large Text (above 18pt) WCAG AA × Fail

Any Text WCAG AA × Fail

Large Text (above 18pt) WCAG AAA × Fail

Any Text WCAG AAA × Fail

Black Background



This preview shows how the CIE LCh color 79, 27.281, 39.265 looks on a black background.

Color Contrast Check

Large Text (above 18pt) WCAG AA ✓ Pass

Any Text WCAG AA ✓ Pass

Large Text (above 18pt) WCAG AAA ✓ Pass

Any Text WCAG AAA ✓ Pass

If you want to check with other color combinations, try the [Color Contrast Checker](#).

CIELCh 79, 27.281, 39.265

Background



This preview shows how black text looks on a background with the CIELCh color 79, 27.281, 39.265.

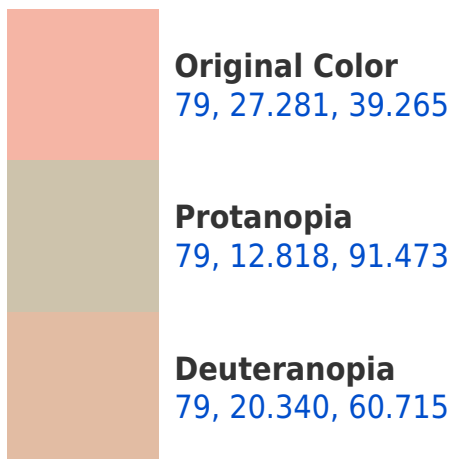



This preview shows how white text looks on a background with the CIELCh color 79, 27.281, 39.265.

Color Blindness Simulation

Color vision deficiency is a very complex topic, and I could not describe the different causes any better than Wikipedia does, so if you want to learn more, you should check out their [article about color blindness](#).

Dichromacy





Tritanopia
79, 27.544, 7.469

Trichromacy



Original Color
79, 27.281, 39.265

Protanomaly
79, 16.049, 63.829

Deuteranomaly
79, 22.422, 50.261

Tritanomaly
79, 26.501, 18.269

Monochromacy



Original Color
79, 27.281, 39.265

Achromatopsia
80, 0.010, 296.813

Achromatomaly
79, 9.311, 39.946

CSS Examples

Text

The CSS property to change the color of the text to CIELCh 79, 27.281, 39.265 is called "color". The color property can be set on classes, ids or directly on the HTML element.

This example shows how text in the color `rgb(245, 181, 165)` looks like.

```
.text, #text, p{  
    color:rgb(245, 181, 165)  
}
```

If you want to add a text shadow in that color use the text-shadow property, you can generate a text shadow directly with our [CSS Text Shadow Generator](#).

Here you see how black text with a 4 pixel rgb(245, 181, 165) colored shadow looks like.

```
.shadow{ text-shadow: 4px 4px 2px rgb(245, 181, 165) }
```

Border

The CSS property to change the border of an element to CIELCh 79, 27.281, 39.265 is called "border". The border property can be set on classes, ids or directly on the HTML element.

This example shows the color as border, it can be applied via the CSS property "border" or "border-color".

```
.border, #border, table{ border:4px solid rgb(245, 181, 165) }
```

If only the border color should be changed use the property border-color.

```
.border{ border-color:rgb(245, 181, 165) }
```

If you want to add a box shadow in that color use:

Here you see how a box with a 4 pixel rgb(245, 181, 165) colored shadow looks like.

```
.boxshadow{ -moz-box-shadow:4px 4px 4px  
4px rgb(245, 181, 165); -webkit-box-  
shadow:4px 4px 4px 4px rgb(245, 181, 165);  
box-shadow:4px 4px 4px 4px rgb(245, 181,  
165) }
```

Background

The CSS property to change the background color of an element to CIELCh 79, 27.281, 39.265 is called "background". The background property can be set on classes, ids or directly on the HTML element.

```
.background, #background, body{  
background: rgb(245, 181, 165) }
```

If only the background color should be changed can be used:

```
.background{ background-color: rgb(245,  
181, 165) }
```

This example shows the color as background, it is applied via the CSS property "background".

To optimize and compress your CSS code, you can use our [online CSS compressor and optimizer](#) based on csstidy. If you want to create a linear or radial gradient as background or border, check our [CSS Gradient Generator](#).

Hey! You found this booklet interesting? Support Converting Colors with the new Membership Option!

The pro membership hides all ads, plus gives you double the colors in the color bucket, and more awesome pro features!

[Learn more, Memberships starting at \\$2.50/m!](#)

**Follow me
on Twitter!**

@ConvertingColor