

Converting Colors

CIELCh(79, 28.497, 4.726)

Have a look what the booklet for
CIELCh(79, 28.497, 4.726) contains.

CIELCh(79, 28.582, 4.828)	3
<i>Conversions</i>	4
<i>Details</i>	6
<i>Harmonies</i>	11
<i>Previews</i>	20
<i>Color Blindness Simulation</i>	23
<i>CSS Examples</i>	26

Color

CIELCh(79, 28.582, 4.828)

Conversions

Conversions Part 1

Format	Color
Hex	F8B0C0
RGB	248, 176, 192
RGB Percent	97%, 69%, 75%
CMY	0.0267, 0.3091, 0.2463
CMYK	0.00, 0.29, 0.23, 0.03
HSL	347°, 84%, 83%
HSV	347°, 29%, 97%
XYZ	63.8766, 54.9284, 57.2110
YIQ	199.3520, 37.7760, 20.2400

Conversions

Conversions Part 2

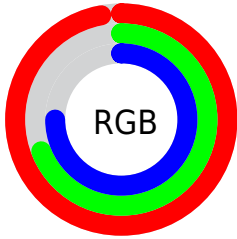
Format	Color
R _Y B	248, 176, 192
Decimal	16298176
CIE Lab	79.00, 28.48, 2.41
CIE LCh	79, 28.582, 4.828
Yxy	54.9284, 0.3629, 0.3121
Android (android.graphics.Color)	4294488256 (0xFFFB0C0)
YUV	199.3520, -3.6245, 42.6643
Hunter-Lab	74.1137, 24.1454, 6.1115

Details

The CIELCh color **79, 28.582, 4.828** is a light color, and the websafe version is hex **FFCCCC**. A complement of this color would be **93, 25.515, 178.808**, and the grayscale version is **80, 0.010, 296.813**.

A 20% lighter version of the original color is **94, 11.604, 335.051**, and **59, 28.357, 4.461** is the 20% darker color. If you saturate the color by 10%, you get **73, 39.088, 6.431**, and if you desaturate by 10%, it is **85, 18.327, 3.507**.

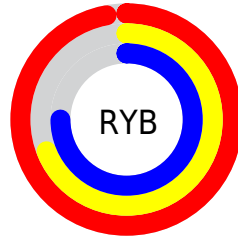
Distribution



Red (97%)

Green (69%)

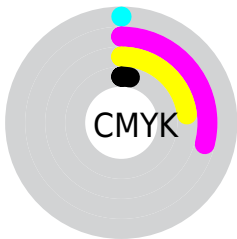
Blue (75%)



Red (97%)

Yellow (69%)

Blue (75%)

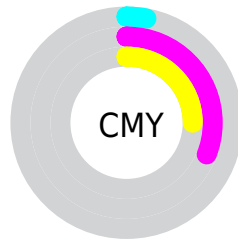


Cyan (0%)

Magenta (29%)

Yellow (23%)

Black (3%)



Cyan (3%)

Magenta (31%)

Yellow (25%)

Brightness & Saturation Gradients

These gradients show how the CIELCh color 79, 28.582, 4.828 changes by changing the brightness by 10 percent. The first figure shows a shift by +10% for each color and the second figure -10%.

Similar to the brightness gradients but the following saturation gradients show a change of the CIELCh color 79, 28.582, 4.828 by changing the saturation by 10% instead.

 79, 28.582, 4.828

 79, 28.582, 4.828

 100, 28.582, 4.828

 69, 28.582, 4.828

 99, 28.582, 4.828

 59, 28.582, 4.828

 49, 28.582, 4.828

 39, 28.582, 4.828

 29, 28.582, 4.828

 19, 28.582, 4.828

 9, 28.582, 4.828

 0, 28.582, 4.828

 79, 28.582, 4.828

 79, 28.582, 4.828

73, 39.088, 6.431

85, 18.327, 3.507

68, 49.601, 8.407

92, 8.478, 2.367

63, 59.756, 10.893

98, 0.900, 182.152

59, 69.120, 14.049

100, 2.358,
199.537

55, 77.312, 18.027

53, 84.185, 22.883

52, 90.006, 28.340

52, 90.583, 28.857

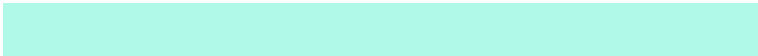
Harmonies

Complementary

The Complementary color scheme is a pair of colors which are on the opposite of each other on the color wheel.



79, 28.582, 4.828



93, 25.515, 178.808

Rectangle

The Rectangle color scheme consists of four colors that form a rectangle on the color wheel.



79, 28.582, 4.828



79, 28.582, 54.828



79, 28.582, 184.828



79, 28.582, 234.828

Sweetspot

The Sweet Spot groups the original color and five complimentary colors.



79, 28.579, 4.831



94, 8.654, 2.367



79, 42.782, 319.077



49, 6.035, 2.526



0, 0.000, 0.000



53, 0.007, 296.813

Same Dimension

The Same Dimension uses a secret algorithm to generate beautiful new colors.



79, 28.579, 4.831



77, 35.630, 5.758



83, 23.350, 46.176



49, 5.383, 2.420



39, 73.112, 27.835



9, 30.886, 16.660

Inverse Universe

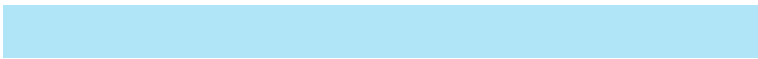
The Inverse Universe completely reimagines the original color for something new.



79, 28.579, 4.831



77, 35.630, 5.758



88, 19.368, 229.839



49, 5.383, 2.420



39, 73.112, 27.835



9, 30.886, 16.660

Previews

White Background



This preview shows how the CIELCh color 79, 28.582, 4.828 looks on a white background.

Color Contrast Check

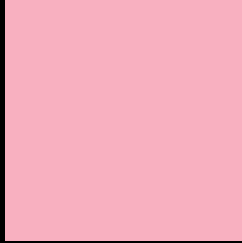
Large Text (above 18pt) WCAG AA × Fail

Any Text WCAG AA × Fail

Large Text (above 18pt) WCAG AAA × Fail

Any Text WCAG AAA × Fail

Black Background



This preview shows how the CIELCh color 79, 28.582, 4.828 looks on a black background.

Color Contrast Check

Large Text (above 18pt) WCAG AA ✓ Pass

Any Text WCAG AA ✓ Pass

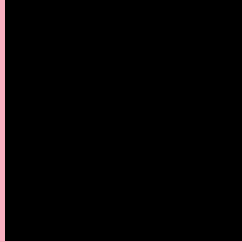
Large Text (above 18pt) WCAG AAA ✓ Pass

Any Text WCAG AAA ✓ Pass

If you want to check with other color combinations, try the [Color Contrast Checker](#).

CIELCh 79, 28.582, 4.828

Background



This preview shows how black text looks on a background with the CIELCh color 79, 28.582, 4.828.



This preview shows how white text looks on a background with the CIELCh color 79, 28.582, 4.828.

Color Blindness Simulation

Color vision deficiency is a very complex topic, and I could not describe the different causes any better than Wikipedia does, so if you want to learn more, you should check out their [article about color blindness](#).

Dichromacy



Original Color

79, 28.582, 4.828

Protanopia

79, 4.350, 300.148

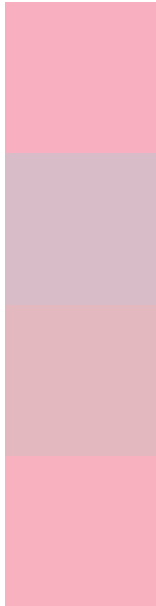
Deuteranopia

79, 10.591, 17.347



Tritanopia
79, 27.921, 7.710

Trichromacy



Original Color
79, 28.582, 4.828

Protanomaly
79, 11.945, 351.027

Deuteranomaly
79, 17.081, 8.305

Tritanomaly
79, 27.999, 6.645

Monochromacy



Original Color
79, 28.582, 4.828

Achromatopsia
81, 0.010, 296.813

Achromatomaly
80, 10.573, 2.722

CSS Examples

Text

The CSS property to change the color of the text to CIELCh 79, 28.582, 4.828 is called "color". The color property can be set on classes, ids or directly on the HTML element.

This example shows how text in the color `rgb(248, 176, 192)` looks like.

```
.text, #text, p{  
    color:rgb(248, 176, 192)  
}
```

If you want to add a text shadow in that color use the text-shadow property, you can generate a text shadow directly with our [CSS Text Shadow Generator](#).

Here you see how black text with a 4 pixel rgb(248, 176, 192) colored shadow looks like.

```
.shadow{ text-shadow: 4px 4px 2px rgb(248, 176, 192) }
```

Border

The CSS property to change the border of an element to CIELCh 79, 28.582, 4.828 is called "border". The border property can be set on classes, ids or directly on the HTML element.

This example shows the color as border, it can be applied via the CSS property "border" or "border-color".

```
.border, #border, table{ border:4px solid rgb(248, 176, 192) }
```

If only the border color should be changed use the property `border-color`.

```
.border{ border-color:rgb(248, 176, 192) }
```

If you want to add a box shadow in that color use:

Here you see how a box with a 4 pixel `rgb(248, 176, 192)` colored shadow looks like.

```
.boxshadow{ -moz-box-shadow:4px 4px 4px  
4px rgb(248, 176, 192); -webkit-box-  
shadow:4px 4px 4px 4px rgb(248, 176, 192);  
box-shadow:4px 4px 4px 4px rgb(248, 176,  
192) }
```

Background

The CSS property to change the background color of an element to CIELCh 79, 28.582, 4.828 is called "background". The background property can be set on classes, ids or directly on the HTML element.

```
.background, #background, body{  
background: rgb(248, 176, 192) }
```

If only the background color should be changed can be used:

```
.background{ background-color: rgb(248,  
176, 192) }
```

This example shows the color as background, it is applied via the CSS property "background".

To optimize and compress your CSS code, you can use our [online CSS compressor and optimizer](#) based on csstidy. If you want to create a linear or radial gradient as background or border, check our [CSS Gradient Generator](#).

Hey! You found this booklet interesting? Support Converting Colors with the new Membership Option!

The pro membership hides all ads, plus gives you double the colors in the color bucket, and more awesome pro features!

[Learn more, Memberships starting at \\$2.50/m!](#)

**Follow me
on Twitter!**

@ConvertingColor