

Converting Colors

CIELCh(79, 31.839, 8.366)

Have a look what the booklet for
CIELCh(79, 31.839, 8.366) contains.

CIELCh(79, 31.482, 8.754)	3
<i>Conversions</i>	4
<i>Details</i>	6
<i>Harmonies</i>	11
<i>Previews</i>	20
<i>Color Blindness Simulation</i>	23
<i>CSS Examples</i>	26

Color

CIELCh(79, 31.482, 8.754)

Conversions

Conversions Part 1

Format	Color
Hex	FEAEBC
RGB	254, 174, 188
RGB Percent	100%, 68%, 74%
CMY	0.0042, 0.3179, 0.2630
CMYK	0.00, 0.32, 0.26, 0.00
HSL	350°, 97%, 84%
HSV	350°, 32%, 100%
XYZ	65.0363, 54.9284, 54.7112
YIQ	199.5160, 43.1860, 21.3140

Conversions

Conversions Part 2

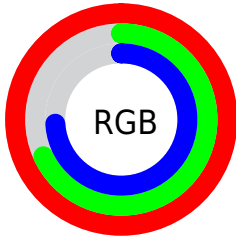
Format	Color
RYB	254, 174, 188
Decimal	16690876
CIELab	79.00, 31.12, 4.79
CIELCh	79, 31.482, 8.754
Yxy	54.9284, 0.3723, 0.3145
Android (android.graphics.Color)	4294880956 (0xFFFEAEB3)
YUV	199.5160, -5.6774, 47.7825
Hunter-Lab	74.1137, 26.9386, 8.1113

Details

The CIELCh color **79, 31.482, 8.754** is a light color, and the websafe version is hex **FF9999**. A complement of this color would be **94, 27.264, 182.300**, and the grayscale version is **80, 0.010, 296.813**.

A 20% lighter version of the original color is **94, 11.469, 341.296**, and **59, 31.426, 8.877** is the 20% darker color. If you saturate the color by 10%, you get **73, 42.290, 10.458**, and if you desaturate by 10%, it is **85, 20.970, 7.373**.

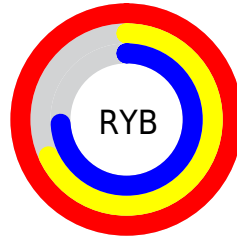
Distribution



Red (100%)

Green (68%)

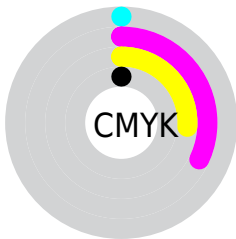
Blue (74%)



Red (100%)

Yellow (68%)

Blue (74%)

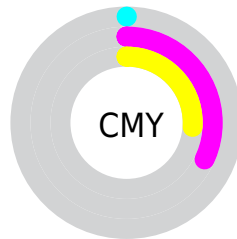


Cyan (0%)

Magenta (32%)

Yellow (26%)

Black (0%)



Cyan (0%)

Magenta (32%)

Yellow (26%)

Brightness & Saturation Gradients

These gradients show how the CIELCh color 79, 31.482, 8.754 changes by changing the brightness by 10 percent. The first figure shows a shift by +10% for each color and the second figure -10%.

Similar to the brightness gradients but the following saturation gradients show a change of the CIELCh color 79, 31.482, 8.754 by changing the saturation by 10% instead.

 79, 31.482, 8.754

 79, 31.482, 8.754

 100, 31.482, 8.754

 69, 31.482, 8.754

 99, 31.482, 8.754

 59, 31.482, 8.754

 49, 31.482, 8.754

 39, 31.482, 8.754

 29, 31.482, 8.754

 19, 31.482, 8.754

 9, 31.482, 8.754

 0, 31.482, 8.754

 79, 31.482, 8.754

 79, 31.482, 8.754

73, 42.290, 10.458

85, 20.970, 7.373

68, 53.140, 12.587

92, 10.916, 6.211

63, 63.663, 15.289

99, 1.388, 4.866

59, 73.440, 18.715

100, 0.374,
201.153

56, 82.134, 22.970

54, 89.629, 27.972

53, 95.198, 32.372

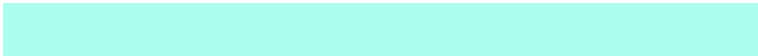
Harmonies

Complementary

The Complementary color scheme is a pair of colors which are on the opposite of each other on the color wheel.



79, 31.482, 8.754



94, 27.264, 182.300

Rectangle

The Rectangle color scheme consists of four colors that form a rectangle on the color wheel.



79, 31.482, 8.754



79, 31.482, 58.754



79, 31.482, 188.754



79, 31.482, 238.754

Sweetspot

The Sweet Spot groups the original color and five complimentary colors.



79, 31.479, 8.758



94, 8.512, 5.941



79, 47.879, 320.728



49, 5.939, 6.098



0, 0.000, 0.000



53, 0.007, 296.813

Same Dimension

The Same Dimension uses a secret algorithm to generate beautiful new colors.



79, 31.479, 8.758



75, 38.617, 9.821



85, 25.704, 51.507



50, 5.385, 5.995



40, 76.200, 31.408



10, 32.132, 19.932

Inverse Universe

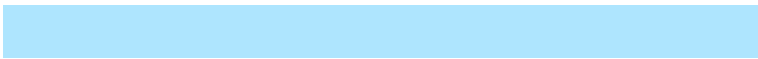
The Inverse Universe completely reimagines the original color for something new.



79, 31.479, 8.758



75, 38.617, 9.821



88, 21.325, 237.112



50, 5.385, 5.995



40, 76.200, 31.408



10, 32.132, 19.932

Previews

White Background



This preview shows how the CIELCh color 79, 31.482, 8.754 looks on a white background.

Color Contrast Check

Large Text (above 18pt) WCAG AA × Fail

Any Text WCAG AA × Fail

Large Text (above 18pt) WCAG AAA × Fail

Any Text WCAG AAA × Fail

Black Background



This preview shows how the CIELCh color 79, 31.482, 8.754 looks on a black background.

Color Contrast Check

Large Text (above 18pt) WCAG AA ✓ Pass

Any Text WCAG AA ✓ Pass

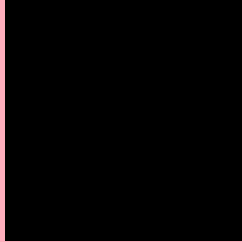
Large Text (above 18pt) WCAG AAA ✓ Pass

Any Text WCAG AAA ✓ Pass

If you want to check with other color combinations, try the [Color Contrast Checker](#).

CIELCh 79, 31.482, 8.754

Background



This preview shows how black text looks on a background with the CIELCh color 79, 31.482, 8.754.

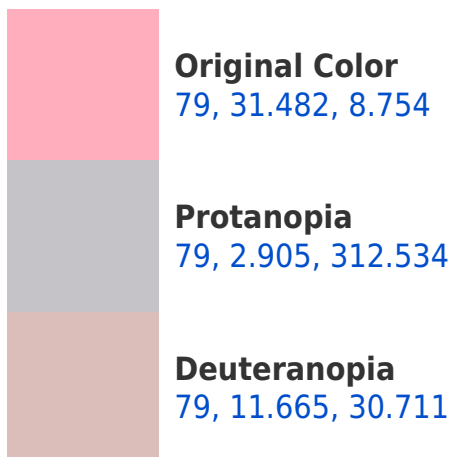


This preview shows how white text looks on a background with the CIELCh color 79, 31.482, 8.754.

Color Blindness Simulation

Color vision deficiency is a very complex topic, and I could not describe the different causes any better than Wikipedia does, so if you want to learn more, you should check out their [article about color blindness](#).

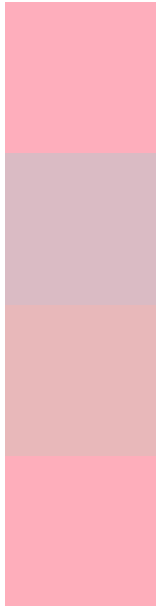
Dichromacy





Tritanopia
79, 31.429, 9.706

Trichromacy



Original Color
79, 31.482, 8.754

Protanomaly
79, 12.539, 357.997

Deuteranomaly
79, 18.453, 17.643

Tritanomaly
79, 31.429, 9.706

Monochromacy



Original Color
79, 31.482, 8.754

Achromatopsia
80, 0.010, 296.813

Achromatomaly
80, 11.190, 6.586

CSS Examples

Text

The CSS property to change the color of the text to CIELCh 79, 31.482, 8.754 is called "color". The color property can be set on classes, ids or directly on the HTML element.

This example shows how text in the color `rgb(254, 174, 188)` looks like.

```
.text, #text, p{  
    color:rgb(254, 174, 188)  
}
```

If you want to add a text shadow in that color use the text-shadow property, you can generate a text shadow directly with our [CSS Text Shadow Generator](#).

Here you see how black text with a 4 pixel rgb(254, 174, 188) colored shadow looks like.

```
.shadow{ text-shadow: 4px 4px 2px rgb(254, 174, 188) }
```

Border

The CSS property to change the border of an element to CIELCh 79, 31.482, 8.754 is called "border". The border property can be set on classes, ids or directly on the HTML element.

This example shows the color as border, it can be applied via the CSS property "border" or "border-color".

```
.border, #border, table{ border:4px solid rgb(254, 174, 188) }
```

If only the border color should be changed use the property `border-color`.

```
.border{ border-color:rgb(254, 174, 188) }
```

If you want to add a box shadow in that color use:

Here you see how a box with a 4 pixel `rgb(254, 174, 188)` colored shadow looks like.

```
.boxshadow{ -moz-box-shadow:4px 4px 4px  
4px rgb(254, 174, 188); -webkit-box-  
shadow:4px 4px 4px 4px rgb(254, 174, 188);  
box-shadow:4px 4px 4px 4px rgb(254, 174,  
188) }
```

Background

The CSS property to change the background color of an element to CIELCh 79, 31.482, 8.754 is called "background". The background property can be set on classes, ids or directly on the HTML element.

```
.background, #background, body{  
background: rgb(254, 174, 188) }
```

If only the background color should be changed can be used:

```
.background{ background-color: rgb(254,  
174, 188) }
```

This example shows the color as background, it is applied via the CSS property "background".

To optimize and compress your CSS code, you can use our [online CSS compressor and optimizer](#) based on csstidy. If you want to create a linear or radial gradient as background or border, check our [CSS Gradient Generator](#).

Hey! You found this booklet interesting? Support Converting Colors with the new Membership Option!

The pro membership hides all ads, plus gives you double the colors in the color bucket, and more awesome pro features!

[Learn more, Memberships starting at \\$2.50/m!](#)

**Follow me
on Twitter!**

@ConvertingColor