

Converting Colors

CIELCh(79, 4.971, 44.975)

Have a look what the booklet for
CIELCh(79, 4.971, 44.975) contains.

CIELCh(79, 4.965, 44.976)	3
<i>Conversions</i>	4
<i>Details</i>	6
<i>Harmonies</i>	11
<i>Previews</i>	20
<i>Color Blindness Simulation</i>	23
<i>CSS Examples</i>	26

Color

CIELCh(79, 4.965, 44.976)

Conversions

Conversions Part 1

Format	Color
Hex	CDC1BD
RGB	205, 193, 189
RGB Percent	80%, 76%, 74%
CMY	0.1952, 0.2423, 0.2580
CMYK	0.00, 0.06, 0.08, 0.20
HSL	15°, 14%, 77%
HSV	15°, 8%, 80%
XYZ	53.5627, 54.9284, 56.0453
YIQ	196.1320, 8.4360, 1.3000

Conversions

Conversions Part 2

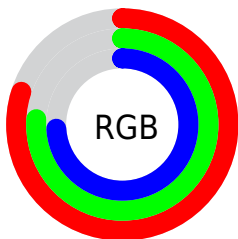
Format	Color
RYB	205, 194, 189
Decimal	13484477
CIELab	79.00, 3.51, 3.51
CIElCh	79, 4.965, 44.976
Yxy	54.9284, 0.3255, 0.3338
Android (android.graphics.Color)	4291674557 (0xFFCDC1BD)
YUV	196.1320, -3.5161, 7.7772
Hunter-Lab	74.1137, -0.6951, 7.0441

Details

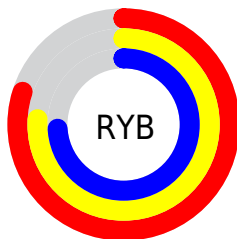
The CIELCh color **79, 4.965, 44.976** is a light color, and the websafe version is hex **CCCCCC**. A complement of this color would be **80, 4.747, 225.954**, and the grayscale version is **79, 0.010, 296.813**.

A 20% lighter version of the original color is **98, 2.923, 63.312**, and **59, 4.935, 46.879** is the 20% darker color. If you saturate the color by 10%, you get **75, 11.792, 44.699**, and if you desaturate by 10%, it is **83, 1.354, 225.946**.

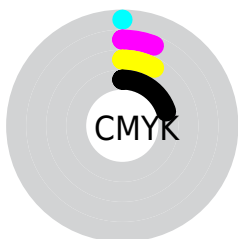
Distribution



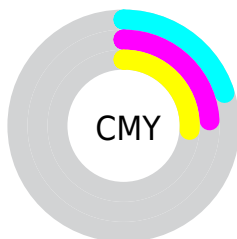
- Red (80%)
- Green (76%)
- Blue (74%)



- Red (80%)
- Yellow (76%)
- Blue (74%)



- Cyan (0%)
- Magenta (6%)
- Yellow (8%)
- Black (20%)



- Cyan (20%)
- Magenta (24%)
- Yellow (26%)

Brightness & Saturation Gradients

These gradients show how the CIELCh color 79, 4.965, 44.976 changes by changing the brightness by 10 percent. The first figure shows a shift by +10% for each color and the second figure -10%.

Similar to the brightness gradients but the following saturation gradients show a change of the CIELCh color 79, 4.965, 44.976 by changing the saturation by 10% instead.

 79, 4.965, 44.976

 79, 4.965, 44.976

 100, 4.965, 44.976

 69, 4.965, 44.976

 99, 4.965, 44.976

 59, 4.965, 44.976

 49, 4.965, 44.976

 39, 4.965, 44.976

 29, 4.965, 44.976

 19, 4.965, 44.976

 9, 4.965, 44.976

 0, 4.965, 44.976

 79, 4.965, 44.976

 79, 4.965, 44.976

75, 11.792, 44.699

83, 1.354, 225.946

70, 19.181, 44.447

88, 7.215, 226.112

66, 27.168, 44.310

93, 12.673,
226.602

62, 35.769, 44.321

97, 16.414,
198.835

58, 44.952, 44.504

55, 54.593, 44.848

97, 16.495,
198.410

52, 64.384, 45.269

49, 73.614, 45.500

47, 81.024, 45.070

Harmonies

Complementary

The Complementary color scheme is a pair of colors which are on the opposite of each other on the color wheel.



79, 4.965, 44.976



80, 4.747, 225.954

Rectangle

The Rectangle color scheme consists of four colors that form a rectangle on the color wheel.



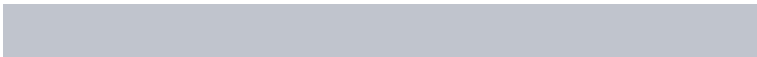
79, 4.965, 44.976



79, 4.965, 94.976



79, 4.965, 224.976



79, 4.965, 274.976

Sweetspot

The Sweet Spot groups the original color and five complimentary colors.



79, 4.964, 45.003



99, 1.483, 44.930



78, 8.736, 332.805



53, 0.842, 44.912



0, 0.000, 0.000



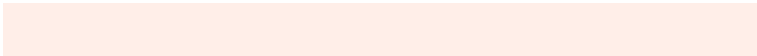
53, 0.007, 296.813

Same Dimension

The Same Dimension uses a secret algorithm to generate beautiful new colors.



79, 4.964, 45.003



95, 6.870, 44.966



81, 6.512, 96.290



41, 3.617, 44.958



37, 70.050, 45.497



6, 15.622, 33.802

Inverse Universe

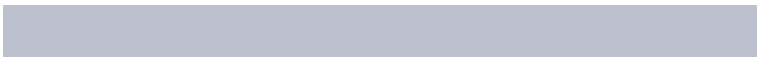
The Inverse Universe completely reimagines the original color for something new.



80, 4.747, 225.954



97, 6.515, 226.015



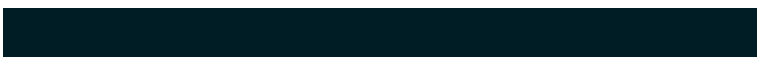
78, 6.559, 278.212



42, 3.424, 226.029



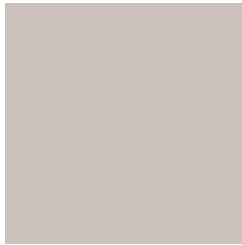
49, 33.075, 245.876



9, 11.800, 235.122

Previews

White Background



This preview shows how the CIELCh color 79, 4.965, 44.976 looks on a white background.

Color Contrast Check

Large Text (above 18pt) WCAG AA × Fail

Any Text WCAG AA × Fail

Large Text (above 18pt) WCAG AAA × Fail

Any Text WCAG AAA × Fail

Black Background



This preview shows how the CIELCh color 79, 4.965, 44.976 looks on a black background.

Color Contrast Check

Large Text (above 18pt) WCAG AA ✓ Pass

Any Text WCAG AA ✓ Pass

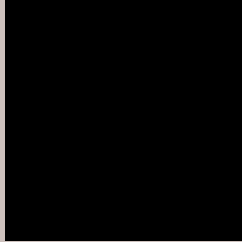
Large Text (above 18pt) WCAG AAA ✓ Pass

Any Text WCAG AAA ✓ Pass

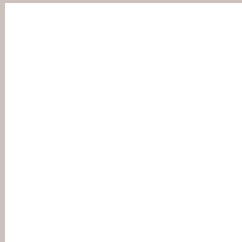
If you want to check with other color combinations, try the [Color Contrast Checker](#).

CIELCh 79, 4.965, 44.976

Background



This preview shows how black text looks on a background with the CIELCh color 79, 4.965, 44.976.



This preview shows how white text looks on a background with the CIELCh color 79, 4.965, 44.976.

Color Blindness Simulation

Color vision deficiency is a very complex topic, and I could not describe the different causes any better than Wikipedia does, so if you want to learn more, you should check out their [article about color blindness](#).

Dichromacy



Original Color

79, 4.965, 44.976

Protanopia

79, 3.230, 74.704

Deuteranopia

79, 10.591, 17.347



Tritanopia
79, 10.170, 328.260

Trichromacy



Original Color
79, 4.965, 44.976

Protanomaly
79, 3.651, 55.096

Deuteranomaly
79, 8.304, 23.657

Tritanomaly
79, 7.007, 342.420

Monochromacy



Original Color
79, 4.965, 44.976

Achromatopsia
79, 0.010, 296.813

Achromatomaly
79, 1.562, 39.080

CSS Examples

Text

The CSS property to change the color of the text to CIELCh 79, 4.965, 44.976 is called "color". The color property can be set on classes, ids or directly on the HTML element.

This example shows how text in the color `rgb(205, 193, 189)` looks like.

```
.text, #text, p{  
    color:rgb(205, 193, 189)  
}
```

If you want to add a text shadow in that color use the text-shadow property, you can generate a text shadow directly with our [CSS Text Shadow Generator](#).

Here you see how black text with a 4 pixel rgb(205, 193, 189) colored shadow looks like.

```
.shadow{ text-shadow: 4px 4px 2px rgb(205, 193, 189) }
```

Border

The CSS property to change the border of an element to CIELCh 79, 4.965, 44.976 is called "border". The border property can be set on classes, ids or directly on the HTML element.

This example shows the color as border, it can be applied via the CSS property "border" or "border-color".

```
.border, #border, table{ border:4px solid rgb(205, 193, 189) }
```

If only the border color should be changed use the property `border-color`.

```
.border{ border-color:rgb(205, 193, 189) }
```

If you want to add a box shadow in that color use:

Here you see how a box with a 4 pixel `rgb(205, 193, 189)` colored shadow looks like.

```
.boxshadow{ -moz-box-shadow:4px 4px 4px  
4px rgb(205, 193, 189); -webkit-box-  
shadow:4px 4px 4px 4px rgb(205, 193, 189);  
box-shadow:4px 4px 4px 4px rgb(205, 193,  
189) }
```

Background

The CSS property to change the background color of an element to CIELCh 79, 4.965, 44.976 is called "background". The background property can be set on classes, ids or directly on the HTML element.

```
.background, #background, body{  
background: rgb(205, 193, 189) }
```

If only the background color should be changed can be used:

```
.background{ background-color: rgb(205,  
193, 189) }
```

This example shows the color as background, it is applied via the CSS property "background".

To optimize and compress your CSS code, you can use our [online CSS compressor and optimizer](#) based on csstidy. If you want to create a linear or radial gradient as background or border, check our [CSS Gradient Generator](#).

Hey! You found this booklet interesting? Support Converting Colors with the new Membership Option!

The pro membership hides all ads, plus gives you double the colors in the color bucket, and more awesome pro features!

[Learn more, Memberships starting at \\$2.50/m!](#)

**Follow me
on Twitter!**

@ConvertingColor