

Converting Colors

CIELCh(79, 6.276, 3.851)

Have a look what the booklet for
CIELCh(79, 6.276, 3.851) contains.

CIELCh(79, 6.168, 4.828)	3
<i>Conversions</i>	4
<i>Details</i>	6
<i>Harmonies</i>	11
<i>Previews</i>	20
<i>Color Blindness Simulation</i>	23
<i>CSS Examples</i>	26

Color

CIELCh(79, 6.168, 4.828)

Conversions

Conversions Part 1

Format	Color
Hex	D0C0C3
RGB	208, 192, 195
RGB Percent	82%, 75%, 76%
CMY	0.1851, 0.2478, 0.2360
CMYK	0.00, 0.08, 0.06, 0.19
HSL	349°, 14%, 78%
HSV	349°, 8%, 81%
XYZ	54.5941, 54.9284, 59.2408
YIQ	197.1260, 8.5730, 4.3250

Conversions

Conversions Part 2

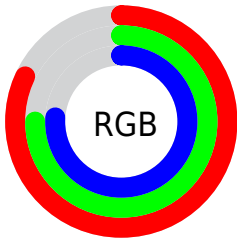
Format	Color
R_{YB}	208, 192, 195
Decimal	13680835
CIE Lab	79.00, 6.15, 0.52
CIE LCh	79, 6.168, 4.828
Yxy	54.9284, 0.3235, 0.3255
Android (android.graphics.Color)	4291870915 (0xFFD0C0C3)
YUV	197.1260, -1.0481, 9.5365
Hunter-Lab	74.1137, 1.7888, 4.4877

Details

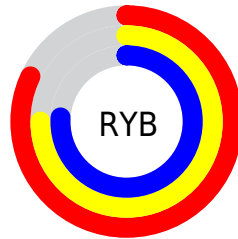
The CIELCh color **79, 6.168, 4.828** is a light color, and the websafe version is hex **CCCCCC**. A complement of this color would be **82, 5.974, 183.637**, and the grayscale version is **79, 0.010, 296.813**.

A 20% lighter version of the original color is **98, 3.216, 340.063**, and **59, 6.051, 9.229** is the 20% darker color. If you saturate the color by 10%, you get **73, 14.561, 5.944**, and if you desaturate by 10%, it is **85, 1.789, 184.326**.

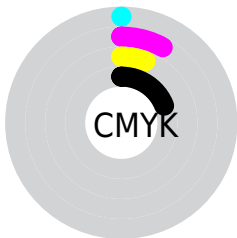
Distribution



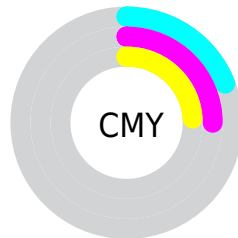
- Red (82%)
- Green (75%)
- Blue (76%)



- Red (82%)
- Yellow (75%)
- Blue (76%)



- Cyan (0%)
- Magenta (8%)
- Yellow (6%)
- Black (19%)



- Cyan (19%)
- Magenta (25%)
- Yellow (24%)

Brightness & Saturation Gradients

These gradients show how the CIELCh color 79, 6.168, 4.828 changes by changing the brightness by 10 percent. The first figure shows a shift by +10% for each color and the second figure -10%.

Similar to the brightness gradients but the following saturation gradients show a change of the CIELCh color 79, 6.168, 4.828 by changing the saturation by 10% instead.

 79, 6.168, 4.828

 79, 6.168, 4.828

 100, 6.168, 4.828

 69, 6.168, 4.828

 99, 6.168, 4.828

 59, 6.168, 4.828

 49, 6.168, 4.828

 39, 6.168, 4.828

 29, 6.168, 4.828

 19, 6.168, 4.828

 9, 6.168, 4.828

 0, 6.168, 4.828

 79, 6.168, 4.828

 79, 6.168, 4.828

73, 14.561, 5.944

85, 1.789, 184.326

68, 23.354, 7.217

91, 9.302, 183.312

63, 32.445, 8.755

96, 16.393,
182.608

58, 41.650, 10.659

97, 15.688,
198.462

53, 50.694, 13.052

50, 59.231, 16.085

47, 66.933, 19.897

45, 73.613, 24.530

44, 79.349, 29.724

Harmonies

Complementary

The Complementary color scheme is a pair of colors which are on the opposite of each other on the color wheel.



79, 6.168, 4.828



82, 5.974, 183.637

Rectangle

The Rectangle color scheme consists of four colors that form a rectangle on the color wheel.



79, 6.168, 4.828



79, 6.168, 54.828



79, 6.168, 184.828



79, 6.168, 234.828

Sweetspot

The Sweet Spot groups the original color and five complimentary colors.



79, 6.166, 4.842



99, 1.865, 4.071



79, 9.768, 319.128



53, 1.060, 4.045



0, 0.000, 0.000



53, 0.007, 296.813

Same Dimension

The Same Dimension uses a secret algorithm to generate beautiful new colors.



79, 6.166, 4.842



94, 8.546, 4.993



80, 4.884, 50.951



41, 4.590, 5.026



35, 68.396, 29.982



4, 20.186, 10.787

Inverse Universe

The Inverse Universe completely reimagines the original color for something new.



79, 6.166, 4.842



94, 8.546, 4.993



81, 4.692, 232.231



41, 4.590, 5.026



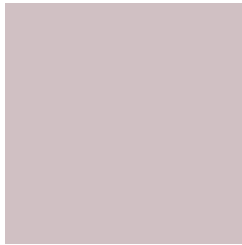
35, 68.396, 29.982



4, 20.186, 10.787

Previews

White Background



This preview shows how the CIELCh color 79, 6.168, 4.828 looks on a white background.

Color Contrast Check

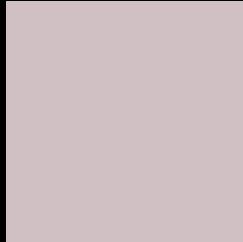
Large Text (above 18pt) WCAG AA × Fail

Any Text WCAG AA × Fail

Large Text (above 18pt) WCAG AAA × Fail

Any Text WCAG AAA × Fail

Black Background



This preview shows how the CIELCh color 79, 6.168, 4.828 looks on a black background.

Color Contrast Check

Large Text (above 18pt) WCAG AA ✓ Pass

Any Text WCAG AA ✓ Pass

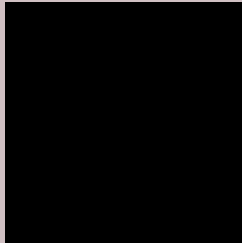
Large Text (above 18pt) WCAG AAA ✓ Pass

Any Text WCAG AAA ✓ Pass

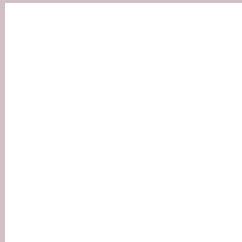
If you want to check with other color combinations, try the [Color Contrast Checker](#).

CIELCh 79, 6.168, 4.828

Background



This preview shows how black text looks on a background with the CIELCh color 79, 6.168, 4.828.



This preview shows how white text looks on a background with the CIELCh color 79, 6.168, 4.828.

Color Blindness Simulation

Color vision deficiency is a very complex topic, and I could not describe the different causes any better than Wikipedia does, so if you want to learn more, you should check out their [article about color blindness](#).

Dichromacy



Original Color

79, 6.168, 4.828

Protanopia

79, 1.575, 359.388

Deuteranopia

79, 9.875, 1.329



Tritanopia
79, 10.642, 331.437

Trichromacy



Original Color

79, 6.168, 4.828

Protanomaly

79, 3.151, 359.723

Deuteranomaly

79, 8.634, 2.124

Tritanomaly

79, 8.535, 341.406

Monochromacy



Original Color

79, 6.168, 4.828

Achromatopsia

80, 0.010, 296.813

Achromatomaly

79, 2.283, 5.858

CSS Examples

Text

The CSS property to change the color of the text to CIELCh 79, 6.168, 4.828 is called "color". The color property can be set on classes, ids or directly on the HTML element.

This example shows how text in the color `rgb(208, 192, 195)` looks like.

```
.text, #text, p{  
    color:rgb(208, 192, 195)  
}
```

If you want to add a text shadow in that color use the text-shadow property, you can generate a text shadow directly with our [CSS Text Shadow Generator](#).

Here you see how black text with a 4 pixel rgb(208, 192, 195) colored shadow looks like.

```
.shadow{ text-shadow: 4px 4px 2px rgb(208, 192, 195) }
```

Border

The CSS property to change the border of an element to CIELCh 79, 6.168, 4.828 is called "border". The border property can be set on classes, ids or directly on the HTML element.

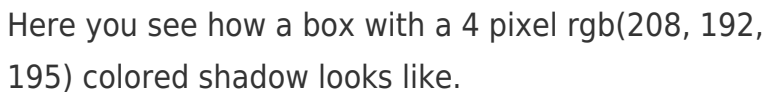
This example shows the color as border, it can be applied via the CSS property "border" or "border-color".

```
.border, #border, table{ border:4px solid rgb(208, 192, 195) }
```

If only the border color should be changed use the property `border-color`.

```
.border{ border-color:rgb(208, 192, 195) }
```

If you want to add a box shadow in that color use:



Here you see how a box with a 4 pixel `rgb(208, 192, 195)` colored shadow looks like.

```
.boxshadow{ -moz-box-shadow:4px 4px 4px  
4px rgb(208, 192, 195); -webkit-box-  
shadow:4px 4px 4px 4px rgb(208, 192, 195);  
box-shadow:4px 4px 4px 4px rgb(208, 192,  
195) }
```

Background

The CSS property to change the background color of an element to CIELCh 79, 6.168, 4.828 is called "background". The background property can be set on classes, ids or directly on the HTML element.

```
.background, #background, body{  
background: rgb(208, 192, 195) }
```

If only the background color should be changed can be used:

```
.background{ background-color: rgb(208,  
192, 195) }
```

This example shows the color as background, it is applied via the CSS property "background".

To optimize and compress your CSS code, you can use our [online CSS compressor and optimizer](#) based on csstidy. If you want to create a linear or radial gradient as background or border, check our [CSS Gradient Generator](#).

Hey! You found this booklet interesting? Support Converting Colors with the new Membership Option!

The pro membership hides all ads, plus gives you double the colors in the color bucket, and more awesome pro features!

[Learn more, Memberships starting at \\$2.50/m!](#)

**Follow me
on Twitter!**

@ConvertingColor