

Converting Colors

CIELCh(79, 8.452, 21.287)

Have a look what the booklet for
CIELCh(79, 8.452, 21.287) contains.

CIELCh(79, 8.304, 23.657)	3
<i>Conversions</i>	4
<i>Details</i>	6
<i>Harmonies</i>	11
<i>Previews</i>	20
<i>Color Blindness Simulation</i>	23
<i>CSS Examples</i>	26

Color

CIELCh(79, 8.304, 23.657)

Conversions

Conversions Part 1

Format	Color
Hex	D5BFBE
RGB	213, 191, 190
RGB Percent	84%, 75%, 75%
CMY	0.1660, 0.2522, 0.2561
CMYK	0.00, 0.10, 0.11, 0.17
HSL	3°, 21%, 79%
HSV	3°, 11%, 83%
XYZ	55.1714, 54.9284, 56.2314
YIQ	197.4640, 13.4330, 4.3530

Conversions

Conversions Part 2

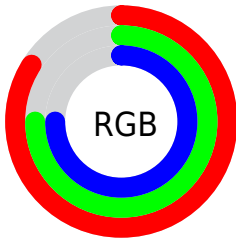
Format	Color
R _Y B	213, 191, 190
Decimal	14008254
CIE Lab	79.00, 7.61, 3.33
CIE LCh	79, 8.304, 23.657
Yxy	54.9284, 0.3317, 0.3302
Android (android.graphics.Color)	4292198334 (0xFFD5BFBE)
YUV	197.4640, -3.6798, 13.6251
Hunter-Lab	74.1137, 3.1794, 6.8952

Details

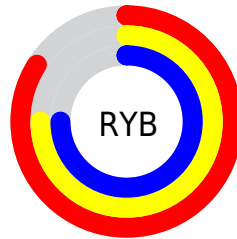
The CIELCh color $79, 8.304, 23.657$ is a light color, and the websafe version is hex `CCCCCC`. A complement of this color would be $83, 7.744, 202.857$, and the grayscale version is $80, 0.010, 296.813$.

A 20% lighter version of the original color is $98, 2.870, 29.570$, and $59, 8.055, 24.158$ is the 20% darker color. If you saturate the color by 10%, you get $73, 16.642, 24.373$, and if you desaturate by 10%, it is $85, 0.599, 22.273$.

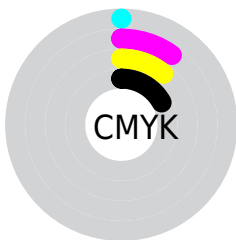
Distribution



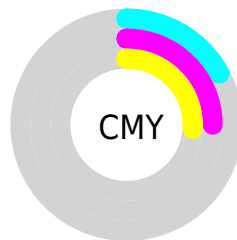
- Red (84%)
- Green (75%)
- Blue (75%)



- Red (84%)
- Yellow (75%)
- Blue (75%)



- Cyan (0%)
- Magenta (10%)
- Yellow (11%)
- Black (17%)



- Cyan (17%)
- Magenta (25%)
- Yellow (26%)

Brightness & Saturation Gradients

These gradients show how the CIELCh color 79, 8.304, 23.657 changes by changing the brightness by 10 percent. The first figure shows a shift by +10% for each color and the second figure -10%.

Similar to the brightness gradients but the following saturation gradients show a change of the CIELCh color 79, 8.304, 23.657 by changing the saturation by 10% instead.

 79, 8.304, 23.657  79, 8.304, 23.657

 100, 8.304, 23.657  69, 8.304, 23.657

 99, 8.304, 23.657  59, 8.304, 23.657

 49, 8.304, 23.657


 39, 8.304, 23.657

 29, 8.304, 23.657

 19, 8.304, 23.657

 9, 8.304, 23.657

 0, 8.304, 23.657

 79, 8.304, 23.657  79, 8.304, 23.657

73, 16.642, 24.373

85, 0.599, 22.273

68, 25.635, 25.277

90, 6.514, 202.964

63, 35.255, 26.472

96, 13.093,
202.645

58, 45.405, 28.047

97, 14.150,
198.562

54, 55.899, 30.090

50, 66.434, 32.643

47, 76.515, 35.590

46, 85.141, 38.415

45, 90.625, 40.385

Harmonies

Complementary

The Complementary color scheme is a pair of colors which are on the opposite of each other on the color wheel.



79, 8.304, 23.657



83, 7.744, 202.857

Rectangle

The Rectangle color scheme consists of four colors that form a rectangle on the color wheel.



79, 8.304, 23.657



79, 8.304, 73.657



79, 8.304, 203.657



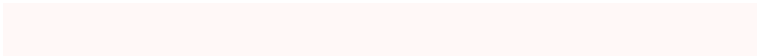
79, 8.304, 253.657

Sweetspot

The Sweet Spot groups the original color and five complimentary colors.



79, 8.303, 23.671



98, 2.587, 23.085



79, 14.541, 325.924



52, 1.968, 23.177



0, 0.000, 0.000



53, 0.007, 296.813

Same Dimension

The Same Dimension uses a secret algorithm to generate beautiful new colors.



79, 8.303, 23.671



91, 11.677, 23.822



82, 7.621, 77.545



42, 4.359, 23.583



36, 76.750, 40.433



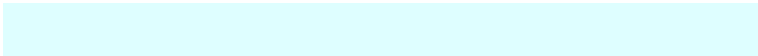
5, 21.389, 21.911

Inverse Universe

The Inverse Universe completely reimagines the original color for something new.



83, 7.744, 202.857



97, 10.720, 202.762



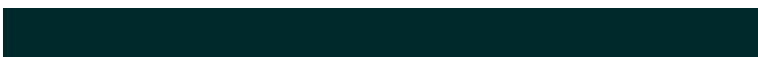
80, 7.468, 260.438



44, 4.104, 202.919



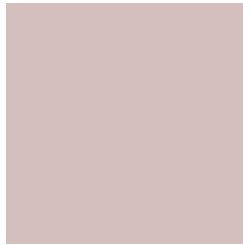
61, 35.013, 203.513



14, 13.868, 202.142

Previews

White Background



This preview shows how the CIELCh color 79, 8.304, 23.657 looks on a white background.

Color Contrast Check

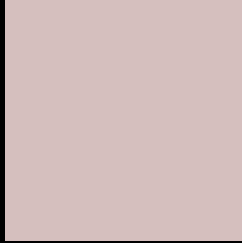
Large Text (above 18pt) WCAG AA × Fail

Any Text WCAG AA × Fail

Large Text (above 18pt) WCAG AAA × Fail

Any Text WCAG AAA × Fail

Black Background



This preview shows how the CIELCh color 79, 8.304, 23.657 looks on a black background.

Color Contrast Check

Large Text (above 18pt) WCAG AA ✓ Pass

Any Text WCAG AA ✓ Pass

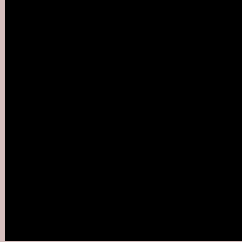
Large Text (above 18pt) WCAG AAA ✓ Pass

Any Text WCAG AAA ✓ Pass

If you want to check with other color combinations, try the [Color Contrast Checker](#).

CIELCh 79, 8.304, 23.657

Background



This preview shows how black text looks on a background with the CIELCh color 79, 8.304, 23.657.



This preview shows how white text looks on a background with the CIELCh color 79, 8.304, 23.657.

Color Blindness Simulation

Color vision deficiency is a very complex topic, and I could not describe the different causes any better than Wikipedia does, so if you want to learn more, you should check out their [article about color blindness](#).

Dichromacy



Original Color

79, 8.304, 23.657

Protanopia

79, 2.432, 60.286

Deuteranopia

79, 10.591, 17.347



Tritanopia
79, 12.165, 342.588

Trichromacy



Original Color
79, 8.304, 23.657

Protanomaly
79, 4.599, 32.997

Deuteranomaly
79, 9.432, 20.105

Tritanomaly
79, 9.893, 354.711

Monochromacy



Original Color
79, 8.304, 23.657

Achromatopsia
80, 0.010, 296.813

Achromatomaly
79, 3.007, 29.633

CSS Examples

Text

The CSS property to change the color of the text to CIELCh 79, 8.304, 23.657 is called "color". The color property can be set on classes, ids or directly on the HTML element.

This example shows how text in the color `rgb(213, 191, 190)` looks like.

```
.text, #text, p{  
    color:rgb(213, 191, 190)  
}
```

If you want to add a text shadow in that color use the text-shadow property, you can generate a text shadow directly with our [CSS Text Shadow Generator](#).

Here you see how black text with a 4 pixel rgb(213, 191, 190) colored shadow looks like.

```
.shadow{ text-shadow: 4px 4px 2px rgb(213, 191, 190) }
```

Border

The CSS property to change the border of an element to CIELCh 79, 8.304, 23.657 is called "border". The border property can be set on classes, ids or directly on the HTML element.

This example shows the color as border, it can be applied via the CSS property "border" or "border-color".

```
.border, #border, table{ border:4px solid rgb(213, 191, 190) }
```

If only the border color should be changed use the property `border-color`.

```
.border{ border-color:rgb(213, 191, 190) }
```

If you want to add a box shadow in that color use:

Here you see how a box with a 4 pixel `rgb(213, 191, 190)` colored shadow looks like.

```
.boxshadow{ -moz-box-shadow:4px 4px 4px 4px rgb(213, 191, 190); -webkit-box-shadow:4px 4px 4px 4px rgb(213, 191, 190); box-shadow:4px 4px 4px 4px rgb(213, 191, 190) }
```

Background

The CSS property to change the background color of an element to CIELCh 79, 8.304, 23.657 is called "background". The background property can be set on classes, ids or directly on the HTML element.

```
.background, #background, body{  
background: rgb(213, 191, 190) }
```

If only the background color should be changed can be used:

```
.background{ background-color: rgb(213,  
191, 190) }
```

This example shows the color as background, it is applied via the CSS property "background".

To optimize and compress your CSS code, you can use our [online CSS compressor and optimizer](#) based on csstidy. If you want to create a linear or radial gradient as background or border, check our [CSS Gradient Generator](#).

Hey! You found this booklet interesting? Support Converting Colors with the new Membership Option!

The pro membership hides all ads, plus gives you double the colors in the color bucket, and more awesome pro features!

[Learn more, Memberships starting at \\$2.50/m!](#)

**Follow me
on Twitter!**

@ConvertingColor