

Converting Colors

CIELCh(79, 9.359, 37.033)

Have a look what the booklet for
CIELCh(79, 9.359, 37.033) contains.

CIELCh(79, 9.322, 39.945)	3
<i>Conversions</i>	4
<i>Details</i>	6
<i>Harmonies</i>	11
<i>Previews</i>	20
<i>Color Blindness Simulation</i>	23
<i>CSS Examples</i>	26

Color

CIELCh(79, 9.322, 39.945)

Conversions

Conversions Part 1

Format	Color
Hex	D6BFB9
RGB	214, 191, 185
RGB Percent	84%, 75%, 73%
CMY	0.1616, 0.2518, 0.2753
CMYK	0.00, 0.11, 0.14, 0.16
HSL	12°, 26%, 78%
HSV	12°, 14%, 84%
XYZ	54.9894, 54.9284, 53.4880
YIQ	197.1930, 15.6340, 3.0100

Conversions

Conversions Part 2

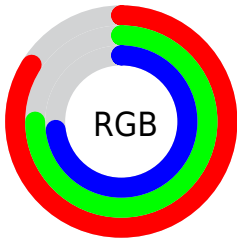
Format	Color
R _Y B	214, 193, 185
Decimal	14073785
CIE Lab	79.00, 7.15, 5.99
CIE LCh	79, 9.322, 39.945
Yxy	54.9284, 0.3365, 0.3361
Android (android.graphics.Color)	4292263865 (0xFFD6BFB9)
YUV	197.1930, -6.0111, 14.7397
Hunter-Lab	74.1137, 2.7408, 9.0899

Details

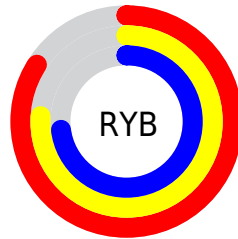
The CIELCh color **79, 9.322, 39.945** is a light color, and the websafe version is hex **CCCCCC**. A complement of this color would be **82, 8.553, 220.835**, and the grayscale version is **80, 0.010, 296.813**.

A 20% lighter version of the original color is **98, 4.157, 66.587**, and **59, 9.214, 41.599** is the 20% darker color. If you saturate the color by 10%, you get **74, 16.880, 39.904**, and if you desaturate by 10%, it is **84, 2.349, 39.969**.

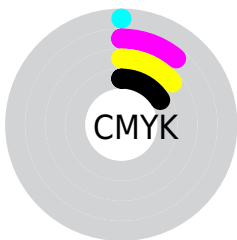
Distribution



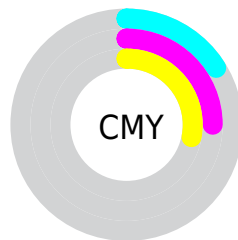
- Red (84%)
- Green (75%)
- Blue (73%)



- Red (84%)
- Yellow (76%)
- Blue (73%)



- Cyan (0%)
- Magenta (11%)
- Yellow (14%)
- Black (16%)



- Cyan (16%)
- Magenta (25%)
- Yellow (28%)

Brightness & Saturation Gradients

These gradients show how the CIELCh color 79, 9.322, 39.945 changes by changing the brightness by 10 percent. The first figure shows a shift by +10% for each color and the second figure -10%.

Similar to the brightness gradients but the following saturation gradients show a change of the CIELCh color 79, 9.322, 39.945 by changing the saturation by 10% instead.

 79, 9.322, 39.945

 79, 9.322, 39.945

 100, 9.322, 39.945

 69, 9.322, 39.945

 99, 9.322, 39.945

 59, 9.322, 39.945

 49, 9.322, 39.945

 39, 9.322, 39.945

 29, 9.322, 39.945

 19, 9.322, 39.945

 9, 9.322, 39.945

 0, 9.322, 39.945

 79, 9.322, 39.945

 79, 9.322, 39.945

74, 16.880, 39.904

84, 2.349, 39.969

70, 25.069, 39.970

89, 4.090, 220.619

65, 33.912, 40.207

94, 10.055,
220.863

61, 43.390, 40.651

97, 13.799,
198.585

57, 53.408, 41.322

54, 63.730, 42.183

51, 73.814, 43.060

48, 82.467, 43.465

47, 86.899, 43.482

Harmonies

Complementary

The Complementary color scheme is a pair of colors which are on the opposite of each other on the color wheel.



79, 9.322, 39.945



82, 8.553, 220.835

Rectangle

The Rectangle color scheme consists of four colors that form a rectangle on the color wheel.



79, 9.322, 39.945



79, 9.322, 89.945



79, 9.322, 219.945



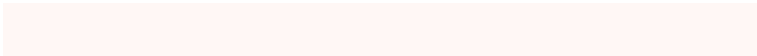
79, 9.322, 269.945

Sweetspot

The Sweet Spot groups the original color and five complimentary colors.



79, 9.321, 39.960



98, 3.050, 39.987



78, 16.336, 331.357



52, 2.175, 40.004



0, 0.000, 0.000



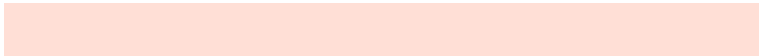
53, 0.007, 296.813

Same Dimension

The Same Dimension uses a secret algorithm to generate beautiful new colors.



79, 9.321, 39.960



91, 12.825, 39.937



83, 11.181, 92.015



43, 3.841, 39.999



38, 73.146, 43.869



6, 19.335, 31.179

Inverse Universe

The Inverse Universe completely reimagines the original color for something new.



82, 8.553, 220.835



95, 11.558, 220.948



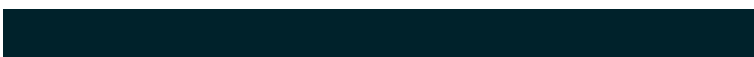
78, 11.214, 275.514



44, 3.624, 220.690



52, 32.647, 236.839



12, 12.650, 228.634

Previews

White Background



This preview shows how the CIELCh color 79, 9.322, 39.945 looks on a white background.

Color Contrast Check

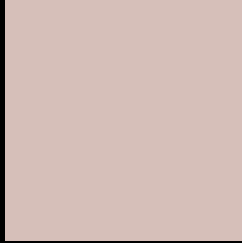
Large Text (above 18pt) WCAG AA × Fail

Any Text WCAG AA × Fail

Large Text (above 18pt) WCAG AAA × Fail

Any Text WCAG AAA × Fail

Black Background



This preview shows how the CIELCh color 79, 9.322, 39.945 looks on a black background.

Color Contrast Check

Large Text (above 18pt) WCAG AA ✓ Pass

Any Text WCAG AA ✓ Pass

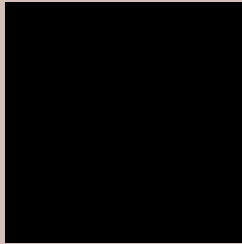
Large Text (above 18pt) WCAG AAA ✓ Pass

Any Text WCAG AAA ✓ Pass

If you want to check with other color combinations, try the [Color Contrast Checker](#).

CIELCh 79, 9.322, 39.945

Background



This preview shows how black text looks on a background with the CIELCh color 79, 9.322, 39.945.



This preview shows how white text looks on a background with the CIELCh color 79, 9.322, 39.945.

Color Blindness Simulation

Color vision deficiency is a very complex topic, and I could not describe the different causes any better than Wikipedia does, so if you want to learn more, you should check out their [article about color blindness](#).

Dichromacy



Original Color

79, 9.322, 39.945

Protanopia

79, 4.797, 81.800

Deuteranopia

79, 11.665, 30.711



Tritanopia
79, 13.077, 342.809

Trichromacy



Original Color
79, 9.322, 39.945

Protanomaly
79, 6.148, 56.863

Deuteranomaly
79, 10.645, 34.545

Tritanomaly
79, 10.398, 359.256

Monochromacy



Original Color
79, 9.322, 39.945

Achromatopsia
80, 0.010, 296.813

Achromatomaly
79, 3.145, 39.203

CSS Examples

Text

The CSS property to change the color of the text to CIELCh 79, 9.322, 39.945 is called "color". The color property can be set on classes, ids or directly on the HTML element.

This example shows how text in the color `rgb(214, 191, 185)` looks like.

```
.text, #text, p{  
    color:rgb(214, 191, 185)  
}
```

If you want to add a text shadow in that color use the text-shadow property, you can generate a text shadow directly with our [CSS Text Shadow Generator](#).

Here you see how black text with a 4 pixel rgb(214, 191, 185) colored shadow looks like.

```
.shadow{ text-shadow: 4px 4px 2px rgb(214, 191, 185) }
```

Border

The CSS property to change the border of an element to CIELCh 79, 9.322, 39.945 is called "border". The border property can be set on classes, ids or directly on the HTML element.

This example shows the color as border, it can be applied via the CSS property "border" or "border-color".

```
.border, #border, table{ border:4px solid rgb(214, 191, 185) }
```

If only the border color should be changed use the property `border-color`.

```
.border{ border-color:rgb(214, 191, 185) }
```

If you want to add a box shadow in that color use:

Here you see how a box with a 4 pixel `rgb(214, 191, 185)` colored shadow looks like.

```
.boxshadow{ -moz-box-shadow:4px 4px 4px  
4px rgb(214, 191, 185); -webkit-box-  
shadow:4px 4px 4px 4px rgb(214, 191, 185);  
box-shadow:4px 4px 4px 4px rgb(214, 191,  
185) }
```

Background

The CSS property to change the background color of an element to CIELCh 79, 9.322, 39.945 is called "background". The background property can be set on classes, ids or directly on the HTML element.

```
.background, #background, body{  
background: rgb(214, 191, 185) }
```

If only the background color should be changed can be used:

```
.background{ background-color: rgb(214,  
191, 185) }
```

This example shows the color as background, it is applied via the CSS property "background".

To optimize and compress your CSS code, you can use our [online CSS compressor and optimizer](#) based on csstidy. If you want to create a linear or radial gradient as background or border, check our [CSS Gradient Generator](#).

Hey! You found this booklet interesting? Support Converting Colors with the new Membership Option!

The pro membership hides all ads, plus gives you double the colors in the color bucket, and more awesome pro features!

[Learn more, Memberships starting at \\$2.50/m!](#)

**Follow me
on Twitter!**

@ConvertingColor