

Converting Colors

CIELCh(80, 10.230, 1.855)

Have a look what the booklet for
CIELCh(80, 10.230, 1.855) contains.

CIELCh(80, 10.203, 2.037)	3
<i>Conversions</i>	4
<i>Details</i>	6
<i>Harmonies</i>	11
<i>Previews</i>	20
<i>Color Blindness Simulation</i>	23
<i>CSS Examples</i>	26

Color

CIELCh(80, 10.203, 2.037)

Conversions

Conversions Part 1

Format	Color
Hex	DAC0C6
RGB	218, 192, 198
RGB Percent	85%, 75%, 78%
CMY	0.1451, 0.2470, 0.2235
CMYK	0.00, 0.12, 0.09, 0.15
HSL	346°, 26%, 80%
HSV	346°, 12%, 85%
XYZ	57.9554, 56.6813, 61.3115
YIQ	200.4580, 13.5700, 7.3780

Conversions

Conversions Part 2

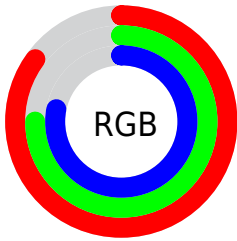
Format	Color
R _Y B	218, 192, 198
Decimal	14336198
CIE Lab	80.00, 10.20, 0.36
CIE LCh	80, 10.203, 2.037
Yxy	56.6813, 0.3294, 0.3221
Android (android.graphics.Color)	4292526278 (0xFFDAC0C6)
YUV	200.4580, -1.2118, 15.3843
Hunter-Lab	75.2870, 5.6560, 4.4169

Details

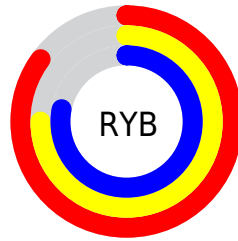
The CIELCh color **80, 10.203, 2.037** is a light color, and the websafe version is hex **CCCCCC**. A complement of this color would be **85, 9.771, 179.906**, and the grayscale version is **81, 0.010, 296.813**.

A 20% lighter version of the original color is **98, 4.358, 324.523**, and **60, 9.923, 3.988** is the 20% darker color. If you saturate the color by 10%, you get **74, 19.194, 3.217**, and if you desaturate by 10%, it is **86, 1.609, 0.786**.

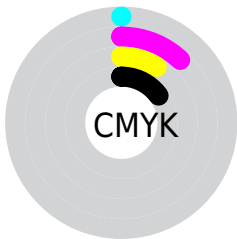
Distribution



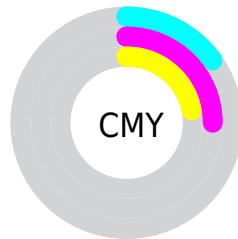
- Red (85%)
- Green (75%)
- Blue (78%)



- Red (85%)
- Yellow (75%)
- Blue (78%)



- Cyan (0%)
- Magenta (12%)
- Yellow (9%)
- Black (15%)



- Cyan (15%)
- Magenta (25%)
- Yellow (22%)

Brightness & Saturation Gradients

These gradients show how the CIELCh color 80, 10.203, 2.037 changes by changing the brightness by 10 percent. The first figure shows a shift by +10% for each color and the second figure -10%.

Similar to the brightness gradients but the following saturation gradients show a change of the CIELCh color 80, 10.203, 2.037 by changing the saturation by 10% instead.

80, 10.203, 2.037

80, 10.203, 2.037

100, 10.203, 2.037

70, 10.203, 2.037

60, 10.203, 2.037

50, 10.203, 2.037

40, 10.203, 2.037

30, 10.203, 2.037

20, 10.203, 2.037

10, 10.203, 2.037

0, 10.203, 2.037

80, 10.203, 2.037

80, 10.203, 2.037

74, 19.194, 3.217

86, 1.609, 0.786

69, 28.509, 4.595

92, 6.553, 180.349

63, 37.987, 6.265

97, 13.124,
183.489

59, 47.377, 8.333

97, 12.449,
198.674

54, 56.329, 10.937

51, 64.453, 14.236

48, 71.442, 18.375

47, 77.240, 23.375

46, 81.383, 27.732

Harmonies

Complementary

The Complementary color scheme is a pair of colors which are on the opposite of each other on the color wheel.



80, 10.203, 2.037



85, 9.771, 179.906

Rectangle

The Rectangle color scheme consists of four colors that form a rectangle on the color wheel.



80, 10.203, 2.037



80, 10.203, 52.037



80, 10.203, 182.037



80, 10.203, 232.037

Sweetspot

The Sweet Spot groups the original color and five complimentary colors.



80, 10.201, 2.045



97, 3.813, 1.155



80, 15.650, 318.307



51, 2.714, 1.252



0, 0.000, 0.000



53, 0.007, 296.813

Same Dimension

The Same Dimension uses a secret algorithm to generate beautiful new colors.



80, 10.201, 2.045



91, 13.673, 2.290



82, 8.061, 46.791



43, 4.850, 1.773



36, 68.100, 26.776



5, 23.773, 10.295

Inverse Universe

The Inverse Universe completely reimagines the original color for something new.



80, 10.201, 2.045



91, 13.673, 2.290



83, 7.519, 228.266



43, 4.850, 1.773



36, 68.100, 26.776



5, 23.773, 10.295

Previews

White Background



This preview shows how the CIELCh color 80, 10.203, 2.037 looks on a white background.

Color Contrast Check

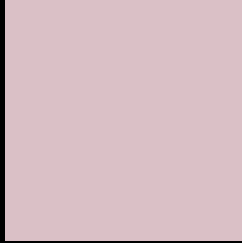
Large Text (above 18pt) WCAG AA × Fail

Any Text WCAG AA × Fail

Large Text (above 18pt) WCAG AAA × Fail

Any Text WCAG AAA × Fail

Black Background



This preview shows how the CIE LCh color 80, 10.203, 2.037 looks on a black background.

Color Contrast Check

Large Text (above 18pt) WCAG AA ✓ Pass

Any Text WCAG AA ✓ Pass

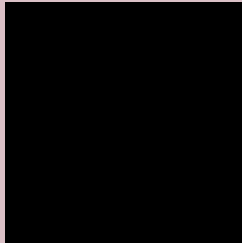
Large Text (above 18pt) WCAG AAA ✓ Pass

Any Text WCAG AAA ✓ Pass

If you want to check with other color combinations, try the [Color Contrast Checker](#).

CIELCh 80, 10.203, 2.037

Background



This preview shows how black text looks on a background with the CIELCh color 80, 10.203, 2.037.



This preview shows how white text looks on a background with the CIELCh color 80, 10.203, 2.037.

Color Blindness Simulation

Color vision deficiency is a very complex topic, and I could not describe the different causes any better than Wikipedia does, so if you want to learn more, you should check out their [article about color blindness](#).

Dichromacy



Original Color

80, 10.203, 2.037

Protanopia

80, 2.605, 324.451

Deuteranopia

80, 10.203, 2.037



Tritanopia
80, 13.041, 342.794

Trichromacy



Original Color
80, 10.203, 2.037

Protanomaly
80, 5.178, 348.824

Deuteranomaly
80, 10.203, 2.037

Tritanomaly
80, 12.168, 348.812

Monochromacy



Original Color
80, 10.203, 2.037

Achromatopsia
81, 0.010, 296.813

Achromatomaly
80, 3.847, 3.552

CSS Examples

Text

The CSS property to change the color of the text to CIELCh 80, 10.203, 2.037 is called "color". The color property can be set on classes, ids or directly on the HTML element.

This example shows how text in the color `rgb(218, 192, 198)` looks like.

```
.text, #text, p{  
    color:rgb(218, 192, 198)  
}
```

If you want to add a text shadow in that color use the text-shadow property, you can generate a text shadow directly with our [CSS Text Shadow Generator](#).

Here you see how black text with a 4 pixel rgb(218, 192, 198) colored shadow looks like.

```
.shadow{ text-shadow: 4px 4px 2px rgb(218, 192, 198) }
```

Border

The CSS property to change the border of an element to CIELCh 80, 10.203, 2.037 is called "border". The border property can be set on classes, ids or directly on the HTML element.

This example shows the color as border, it can be applied via the CSS property "border" or "border-color".

```
.border, #border, table{ border:4px solid rgb(218, 192, 198) }
```

If only the border color should be changed use the property border-color.

```
.border{ border-color:rgb(218, 192, 198) }
```

If you want to add a box shadow in that color use:

Here you see how a box with a 4 pixel rgb(218, 192, 198) colored shadow looks like.

```
.boxshadow{ -moz-box-shadow:4px 4px 4px  
4px rgb(218, 192, 198); -webkit-box-  
shadow:4px 4px 4px 4px rgb(218, 192, 198);  
box-shadow:4px 4px 4px 4px rgb(218, 192,  
198) }
```

Background

The CSS property to change the background color of an element to CIELCh 80, 10.203, 2.037 is called "background". The background property can be set on classes, ids or directly on the HTML element.

```
.background, #background, body{  
background: rgb(218, 192, 198) }
```

If only the background color should be changed can be used:

```
.background{ background-color: rgb(218,  
192, 198) }
```

This example shows the color as background, it is applied via the CSS property "background".

To optimize and compress your CSS code, you can use our [online CSS compressor and optimizer](#) based on csstidy. If you want to create a linear or radial gradient as background or border, check our [CSS Gradient Generator](#).

Hey! You found this booklet interesting? Support Converting Colors with the new Membership Option!

The pro membership hides all ads, plus gives you double the colors in the color bucket, and more awesome pro features!

[Learn more, Memberships starting at \\$2.50/m!](#)

**Follow me
on Twitter!**

@ConvertingColor