

# Converting Colors

CIELCh(80, 10.877, 8.289)

Have a look what the booklet for  
CIELCh(80, 10.877, 8.289) contains.

<b>CIELCh(80, 10.699, 8.821)</b> .....	3
<i><b>Conversions</b></i> .....	4
<i><b>Details</b></i> .....	6
<i><b>Harmonies</b></i> .....	11
<i><b>Previews</b></i> .....	20
<i><b>Color Blindness Simulation</b></i> .....	23
<i><b>CSS Examples</b></i> .....	26

# Color

**CIELCh(80, 10.699, 8.821)**

# Conversions

## Conversions Part 1

Format	Color
Hex	DCC0C4
RGB	220, 192, 196
RGB Percent	86%, 75%, 77%
CMY	0.1386, 0.2484, 0.2327
CMYK	0.00, 0.13, 0.11, 0.14
HSL	351°, 28%, 81%
HSV	351°, 13%, 86%
XYZ	58.1097, 56.6813, 59.8992
YIQ	200.8280, 15.4040, 7.1800

# Conversions

## Conversions Part 2

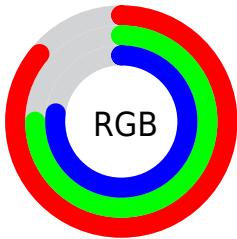
<b>Format</b>	<b>Color</b>
R <sub>YB</sub>	220, 192, 196
Decimal	14467268
CIE <sub>Lab</sub>	80.00, 10.57, 1.64
CIE <sub>LCh</sub>	80, 10.699, 8.821
Y <sub>xy</sub>	56.6813, 0.3326, 0.3245
Android (android.graphics.Color)	4292657348 (0xFFDCC0C4)
YUV	200.8280, -2.3802, 16.8138
Hunter-Lab	75.2870, 6.0217, 5.5291

# Details

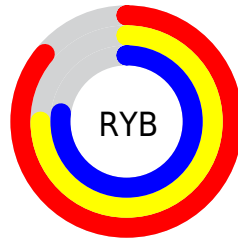
The CIELCh color **80, 10.699, 8.821** is a light color, and the websafe version is hex **CCCCCC**. A complement of this color would be **86, 10.081, 186.698**, and the grayscale version is **81, 0.010, 296.813**.

A 20% lighter version of the original color is **98, 3.564, 333.787**, and **60, 10.513, 11.265** is the 20% darker color. If you saturate the color by 10%, you get **74, 19.655, 9.980**, and if you desaturate by 10%, it is **86, 2.235, 7.693**.

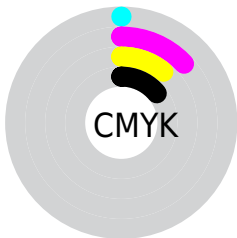
# Distribution



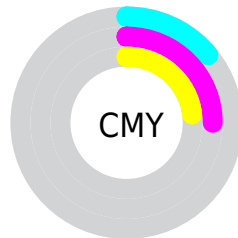
- Red (86%)
- Green (75%)
- Blue (77%)



- Red (86%)
- Yellow (75%)
- Blue (77%)



- Cyan (0%)
- Magenta (13%)
- Yellow (11%)
- Black (14%)



- Cyan (14%)
- Magenta (25%)
- Yellow (23%)

# Brightness & Saturation Gradients

These gradients show how the CIELCh color 80, 10.699, 8.821 changes by changing the brightness by 10 percent. The first figure shows a shift by +10% for each color and the second figure -10%.

Similar to the brightness gradients but the following saturation gradients show a change of the CIELCh color 80, 10.699, 8.821 by changing the saturation by 10% instead.



80, 10.699, 8.821

80, 10.699, 8.821

100, 10.699, 8.821

70, 10.699, 8.821

60, 10.699, 8.821

50, 10.699, 8.821

40, 10.699, 8.821

30, 10.699, 8.821

20, 10.699, 8.821

10, 10.699, 8.821

0, 10.699, 8.821

80, 10.699, 8.821

80, 10.699, 8.821

74, 19.655, 9.980

86, 2.235, 7.693

69, 29.050, 11.364

92, 5.723, 187.249

63, 38.754, 13.079

98, 12.097,  
191.752

58, 48.544, 15.240

98, 11.915,  
198.710

54, 58.106, 17.983

51, 67.086, 21.448

48, 75.194, 25.695

47, 82.265, 30.553

46, 86.785, 34.003

# Harmonies

# Complementary

The Complementary color scheme is a pair of colors which are on the opposite of each other on the color wheel.



80, 10.699, 8.821



86, 10.081, 186.698

# Rectangle

The Rectangle color scheme consists of four colors that form a rectangle on the color wheel.



80, 10.699, 8.821



80, 10.699, 58.821



80, 10.699, 188.821



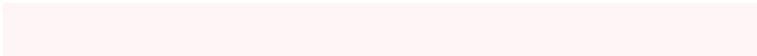
80, 10.699, 238.821

# Sweetspot

The Sweet Spot groups the original color and five complimentary colors.



80, 10.697, 8.830



97, 3.693, 7.886



80, 17.229, 320.860



51, 2.630, 7.981



0, 0.000, 0.000



53, 0.007, 296.813



# Same Dimension

The Same Dimension uses a secret algorithm to generate beautiful new colors.



80, 10.697, 8.830



90, 14.315, 9.088



82, 8.593, 56.627



43, 4.713, 8.482



36, 72.099, 33.158



5, 23.721, 14.099





# Inverse Universe

The Inverse Universe completely reimagines the original color for something new.



80, 10.697, 8.830



90, 14.315, 9.088



83, 8.076, 239.087



43, 4.713, 8.482



36, 72.099, 33.158



5, 23.721, 14.099



# Previews

## White Background



This preview shows how the CIELCh color 80, 10.699, 8.821 looks on a white background.

## Color Contrast Check

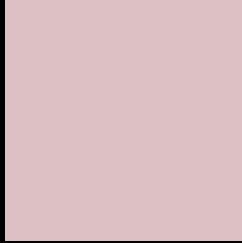
Large Text (above 18pt) WCAG AA × Fail

Any Text WCAG AA × Fail

Large Text (above 18pt) WCAG AAA × Fail

Any Text WCAG AAA × Fail

# Black Background



This preview shows how the CIELCh color 80, 10.699, 8.821 looks on a black background.

## Color Contrast Check

Large Text (above 18pt) WCAG AA ✓ Pass

Any Text WCAG AA ✓ Pass

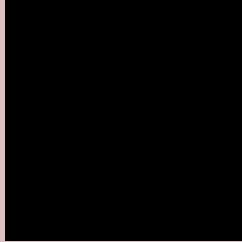
Large Text (above 18pt) WCAG AAA ✓ Pass

Any Text WCAG AAA ✓ Pass

If you want to check with other color combinations, try the [Color Contrast Checker](#).

**CIELCh 80, 10.699, 8.821**

## **Background**



This preview shows how black text looks on a background with the CIELCh color 80, 10.699, 8.821.



This preview shows how white text looks on a background with the CIELCh color 80, 10.699, 8.821.

# Color Blindness Simulation

Color vision deficiency is a very complex topic, and I could not describe the different causes any better than Wikipedia does, so if you want to learn more, you should check out their [article about color blindness](#).

## Dichromacy



### Original Color

80, 10.699, 8.821

### Protanopia

80, 1.570, 359.381

### Deuteranopia

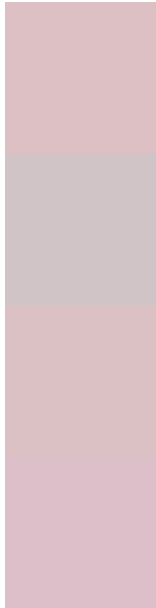
80, 10.326, 8.365



**Tritanopia**  
80, 13.947, 345.718



# Trichromacy



**Original Color**  
80, 10.699, 8.821

**Protanomaly**  
80, 4.570, 6.221

**Deuteranomaly**  
80, 10.326, 8.365

**Tritanomaly**  
80, 12.568, 352.766

# Monochromacy



**Original Color**  
80, 10.699, 8.821

**Achromatopsia**  
81, 0.010, 296.813

**Achromatomaly**  
80, 3.736, 11.390

# CSS Examples

## Text

The CSS property to change the color of the text to CIELCh 80, 10.699, 8.821 is called "color". The color property can be set on classes, ids or directly on the HTML element.

This example shows how text in the color `rgb(220, 192, 196)` looks like.

```
.text, #text, p{  
    color:rgb(220, 192, 196)  
}
```

If you want to add a text shadow in that color use the text-shadow property, you can generate a text shadow directly with our [CSS Text Shadow Generator](#).

Here you see how black text with a 4 pixel rgb(220, 192, 196) colored shadow looks like.

```
.shadow{ text-shadow: 4px 4px 2px rgb(220, 192, 196) }
```

## Border

The CSS property to change the border of an element to CIELCh 80, 10.699, 8.821 is called "border". The border property can be set on classes, ids or directly on the HTML element.

This example shows the color as border, it can be applied via the CSS property "border" or "border-color".

```
.border, #border, table{ border:4px solid rgb(220, 192, 196) }
```

If only the border color should be changed use the property `border-color`.

```
.border{ border-color:rgb(220, 192, 196) }
```

If you want to add a box shadow in that color use:

Here you see how a box with a 4 pixel `rgb(220, 192, 196)` colored shadow looks like.

```
.boxshadow{ -moz-box-shadow:4px 4px 4px  
4px rgb(220, 192, 196); -webkit-box-  
shadow:4px 4px 4px 4px rgb(220, 192, 196);  
box-shadow:4px 4px 4px 4px rgb(220, 192,  
196) }
```

# Background

The CSS property to change the background color of an element to CIELCh 80, 10.699, 8.821 is called "background". The background property can be set on classes, ids or directly on the HTML element.

```
.background, #background, body{  
background: rgb(220, 192, 196) }
```

If only the background color should be changed can be used:

```
.background{ background-color: rgb(220,  
192, 196) }
```

This example shows the color as background, it is applied via the CSS property "background".

To optimize and compress your CSS code, you can use our [online CSS compressor and optimizer](#) based on csstidy. If you want to create a linear or radial gradient as background or border, check our [CSS Gradient Generator](#).

Hey! You found this booklet interesting? Support Converting Colors with the new Membership Option!

The pro membership hides all ads, plus gives you double the colors in the color bucket, and more awesome pro features!

**[Learn more, Memberships starting at \\$2.50/m!](#)**

**Follow me  
on Twitter!**

@ConvertingColor