

Converting Colors

CIELCh(80, 10.910, 52.165)

Have a look what the booklet for
CIELCh(80, 10.910, 52.165) contains.

CIELCh(80, 10.910, 52.165)	3
<i>Conversions</i>	4
<i>Details</i>	6
<i>Harmonies</i>	11
<i>Previews</i>	20
<i>Color Blindness Simulation</i>	23
<i>CSS Examples</i>	26

Color

CIELCh(80, 10.910, 52.165)

Conversions

Conversions Part 1

Format	Color
Hex	DAC2B7
RGB	218, 194, 183
RGB Percent	85%, 76%, 72%
CMY	0.1465, 0.2406, 0.2837
CMYK	0.00, 0.11, 0.16, 0.15
HSL	19°, 32%, 78%
HSV	19°, 16%, 85%
XYZ	56.5302, 56.6813, 52.5709
YIQ	199.9220, 17.8350, 1.6670

Conversions

Conversions Part 2

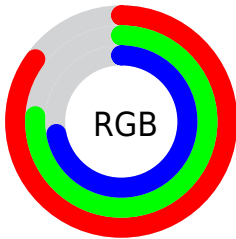
Format	Color
RYB	218, 199, 183
Decimal	14336695
CIELab	80.00, 6.69, 8.62
CIElCh	80, 10.910, 52.165
Yxy	56.6813, 0.3410, 0.3419
Android (android.graphics.Color)	4292526775 (0xFFDAC2B7)
YUV	199.9220, -8.3425, 15.8544
Hunter-Lab	75.2870, 2.2768, 11.3003

Details

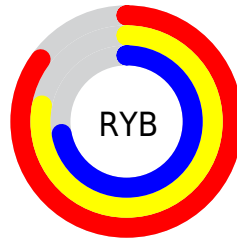
The CIELCh color **80, 10.910, 52.165** is a light color, and the websafe version is hex **CCCCCC**. A complement of this color would be **82, 9.993, 234.817**, and the grayscale version is **80, 0.010, 296.813**.

A 20% lighter version of the original color is **98, 5.849, 91.936**, and **60, 11.036, 50.633** is the 20% darker color. If you saturate the color by 10%, you get **76, 18.378, 51.575**, and if you desaturate by 10%, it is **84, 3.972, 52.778**.

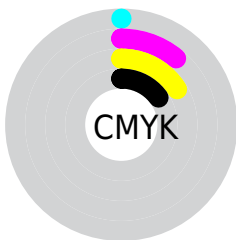
Distribution



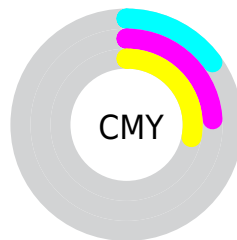
- Red (85%)
- Green (76%)
- Blue (72%)



- Red (85%)
- Yellow (78%)
- Blue (72%)



- Cyan (0%)
- Magenta (11%)
- Yellow (16%)
- Black (15%)



- Cyan (15%)
- Magenta (24%)
- Yellow (28%)


Brightness & Saturation Gradients

These gradients show how the CIELCh color 80, 10.910, 52.165 changes by changing the brightness by 10 percent. The first figure shows a shift by +10% for each color and the second figure -10%.

Similar to the brightness gradients but the following saturation gradients show a change of the CIELCh color 80, 10.910, 52.165 by changing the saturation by 10% instead.

 80, 10.910, 52.165

 80, 10.910, 52.165

 100, 10.910,
52.165

 70, 10.910, 52.165

 60, 10.910, 52.165

 50, 10.910, 52.165

 40, 10.910, 52.165

 30, 10.910, 52.165

 20, 10.910, 52.165

 10, 10.910, 52.165

 0, 10.910, 52.165

 80, 10.910, 52.165

 80, 10.910, 52.165

76, 18.378, 51.575

84, 3.972, 52.778

72, 26.421, 51.041

89, 2.485, 233.851

68, 35.063, 50.603

93, 8.515, 234.451

64, 44.282, 50.274

97, 12.014,
202.782

60, 53.975, 50.037

97, 12.565,
198.667

57, 63.856, 49.813

54, 73.270, 49.372

52, 80.937, 48.234

51, 83.574, 47.769

Harmonies

Complementary

The Complementary color scheme is a pair of colors which are on the opposite of each other on the color wheel.



80, 10.910, 52.165



82, 9.993, 234.817

Rectangle

The Rectangle color scheme consists of four colors that form a rectangle on the color wheel.



80, 10.910, 52.165



80, 10.910, 102.165



80, 10.910, 232.165



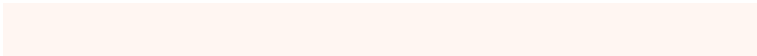
80, 10.910, 282.165

Sweetspot

The Sweet Spot groups the original color and five complimentary colors.



80, 10.910, 52.179



98, 3.703, 52.824



78, 18.332, 335.386



52, 2.533, 52.793



0, 0.000, 0.000



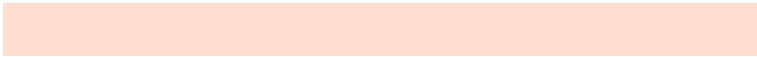
53, 0.007, 296.813

Same Dimension

The Same Dimension uses a secret algorithm to generate beautiful new colors.



80, 10.910, 52.179



91, 14.834, 51.987



84, 14.902, 98.551



44, 3.782, 52.591



41, 70.140, 48.298



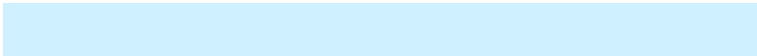
8, 19.519, 40.030

Inverse Universe

The Inverse Universe completely reimagines the original color for something new.



82, 9.993, 234.817



93, 13.336, 235.148



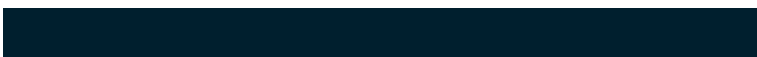
77, 15.168, 282.442



44, 3.601, 234.201



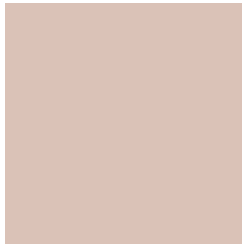
47, 37.455, 258.496



11, 13.907, 248.117

Previews

White Background



This preview shows how the CIELCh color 80, 10.910, 52.165 looks on a white background.

Color Contrast Check

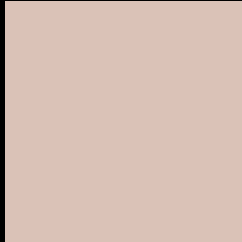
Large Text (above 18pt) WCAG AA × Fail

Any Text WCAG AA × Fail

Large Text (above 18pt) WCAG AAA × Fail

Any Text WCAG AAA × Fail

Black Background



This preview shows how the CIELCh color 80, 10.910, 52.165 looks on a black background.

Color Contrast Check

Large Text (above 18pt) WCAG AA ✓ Pass

Any Text WCAG AA ✓ Pass

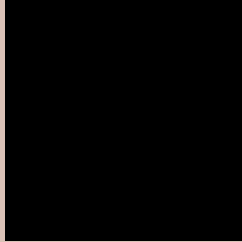
Large Text (above 18pt) WCAG AAA ✓ Pass

Any Text WCAG AAA ✓ Pass

If you want to check with other color combinations, try the [Color Contrast Checker](#).

CIELCh 80, 10.910, 52.165

Background



This preview shows how black text looks on a background with the CIELCh color 80, 10.910, 52.165.



This preview shows how white text looks on a background with the CIELCh color 80, 10.910, 52.165.

Color Blindness Simulation

Color vision deficiency is a very complex topic, and I could not describe the different causes any better than Wikipedia does, so if you want to learn more, you should check out their [article about color blindness](#).

Dichromacy



Original Color

80, 10.910, 52.165

Protanopia

80, 7.371, 88.520

Deuteranopia

80, 12.871, 41.884



Tritanopia
80, 13.947, 345.718

Trichromacy



Original Color
80, 10.910, 52.165

Protanomaly
80, 8.292, 69.655

Deuteranomaly
80, 12.016, 46.182

Tritanomaly
80, 11.298, 3.957

Monochromacy



Original Color
80, 10.910, 52.165

Achromatopsia
81, 0.010, 296.813

Achromatomaly
80, 3.636, 55.101

CSS Examples

Text

The CSS property to change the color of the text to CIELCh 80, 10.910, 52.165 is called "color". The color property can be set on classes, ids or directly on the HTML element.

This example shows how text in the color `rgb(218, 194, 183)` looks like.

```
.text, #text, p{  
    color:rgb(218, 194, 183)  
}
```

If you want to add a text shadow in that color use the text-shadow property, you can generate a text shadow directly with our [CSS Text Shadow Generator](#).

Here you see how black text with a 4 pixel rgb(218, 194, 183) colored shadow looks like.

```
.shadow{ text-shadow: 4px 4px 2px rgb(218, 194, 183) }
```

Border

The CSS property to change the border of an element to CIELCh 80, 10.910, 52.165 is called "border". The border property can be set on classes, ids or directly on the HTML element.

This example shows the color as border, it can be applied via the CSS property "border" or "border-color".

```
.border, #border, table{ border:4px solid rgb(218, 194, 183) }
```

If only the border color should be changed use the property `border-color`.

```
.border{ border-color:rgb(218, 194, 183) }
```

If you want to add a box shadow in that color use:

Here you see how a box with a 4 pixel `rgb(218, 194, 183)` colored shadow looks like.

```
.boxshadow{ -moz-box-shadow:4px 4px 4px  
4px rgb(218, 194, 183); -webkit-box-  
shadow:4px 4px 4px 4px rgb(218, 194, 183);  
box-shadow:4px 4px 4px 4px rgb(218, 194,  
183) }
```

Background

The CSS property to change the background color of an element to CIELCh 80, 10.910, 52.165 is called "background". The background property can be set on classes, ids or directly on the HTML element.

```
.background, #background, body{  
background: rgb(218, 194, 183) }
```

If only the background color should be changed can be used:

```
.background{ background-color: rgb(218,  
194, 183) }
```

This example shows the color as background, it is applied via the CSS property "background".

To optimize and compress your CSS code, you can use our [online CSS compressor and optimizer](#) based on csstidy. If you want to create a linear or radial gradient as background or border, check our [CSS Gradient Generator](#).

Hey! You found this booklet interesting? Support Converting Colors with the new Membership Option!

The pro membership hides all ads, plus gives you double the colors in the color bucket, and more awesome pro features!

[Learn more, Memberships starting at \\$2.50/m!](#)

**Follow me
on Twitter!**

@ConvertingColor