

Converting Colors

CIELCh(80, 10.945, 0.710)

Have a look what the booklet for
CIELCh(80, 10.945, 0.710) contains.

CIELCh(80, 10.563, 2.716)	3
<i>Conversions</i>	4
<i>Details</i>	6
<i>Harmonies</i>	11
<i>Previews</i>	20
<i>Color Blindness Simulation</i>	23
<i>CSS Examples</i>	26

Color

CIELCh(80, 10.563, 2.716)

Conversions

Conversions Part 1

Format	Color
Hex	DBC0C6
RGB	219, 192, 198
RGB Percent	86%, 75%, 78%
CMY	0.1421, 0.2480, 0.2245
CMYK	0.00, 0.12, 0.10, 0.14
HSL	347°, 27%, 80%
HSV	347°, 12%, 86%
XYZ	58.1010, 56.6813, 61.1581
YIQ	200.7570, 14.1660, 7.5900

Conversions

Conversions Part 2

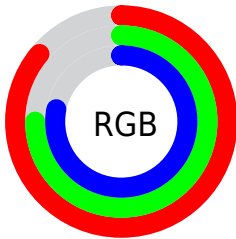
Format	Color
R _Y B	219, 192, 198
Decimal	14401734
CIE Lab	80.00, 10.55, 0.50
CIE LCh	80, 10.563, 2.716
Yxy	56.6813, 0.3302, 0.3222
Android (android.graphics.Color)	4292591814 (0xFFDBC0C6)
YUV	200.7570, -1.3592, 15.9991
Hunter-Lab	75.2870, 6.0010, 4.5377

Details

The CIELCh color **80, 10.563, 2.716** is a light color, and the websafe version is hex **CCCCCC**. A complement of this color would be **85, 10.089, 180.508**, and the grayscale version is **81, 0.010, 296.813**.

A 20% lighter version of the original color is **98, 4.358, 324.523**, and **60, 10.311, 4.674** is the 20% darker color. If you saturate the color by 10%, you get **74, 19.577, 3.903**, and if you desaturate by 10%, it is **86, 1.954, 1.516**.

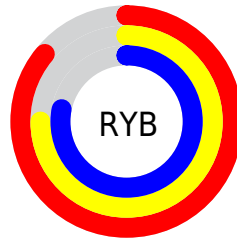
Distribution



Red (86%)

Green (75%)

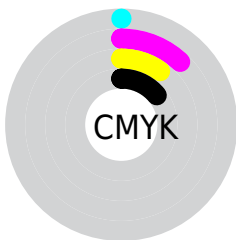
Blue (78%)



Red (86%)

Yellow (75%)

Blue (78%)

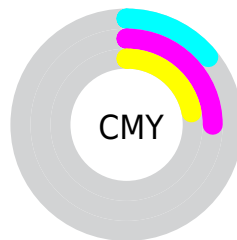


Cyan (0%)

Magenta (12%)

Yellow (10%)

Black (14%)



Cyan (14%)

Magenta (25%)

Yellow (22%)

Brightness & Saturation Gradients

These gradients show how the CIELCh color 80, 10.563, 2.716 changes by changing the brightness by 10 percent. The first figure shows a shift by +10% for each color and the second figure -10%.

Similar to the brightness gradients but the following saturation gradients show a change of the CIELCh color 80, 10.563, 2.716 by changing the saturation by 10% instead.

80, 10.563, 2.716

80, 10.563, 2.716

100, 10.563, 2.716

70, 10.563, 2.716

60, 10.563, 2.716

50, 10.563, 2.716

40, 10.563, 2.716

30, 10.563, 2.716

20, 10.563, 2.716

10, 10.563, 2.716

0, 10.563, 2.716

80, 10.563, 2.716

80, 10.563, 2.716

74, 19.577, 3.903

86, 1.954, 1.516

69, 28.922, 5.294

92, 6.216, 181.027

63, 38.437, 6.984

97, 12.806,
184.296

59, 47.869, 9.082

98, 12.206,
198.690

54, 56.869, 11.727

51, 65.049, 15.079

48, 72.114, 19.273

47, 78.014, 24.309

46, 82.052, 28.421

Harmonies

Complementary

The Complementary color scheme is a pair of colors which are on the opposite of each other on the color wheel.



80, 10.563, 2.716



85, 10.089, 180.508

Rectangle

The Rectangle color scheme consists of four colors that form a rectangle on the color wheel.



80, 10.563, 2.716



80, 10.563, 52.716



80, 10.563, 182.716



80, 10.563, 232.716

Sweetspot

The Sweet Spot groups the original color and five complimentary colors.



80, 10.561, 2.724



97, 3.799, 1.789



80, 16.244, 318.326



51, 2.705, 1.885



0, 0.000, 0.000



53, 0.007, 296.813

Same Dimension

The Same Dimension uses a secret algorithm to generate beautiful new colors.



80, 10.561, 2.724



90, 14.639, 3.037



82, 8.377, 46.774



43, 4.834, 2.406



36, 68.460, 27.460



5, 23.763, 10.669

Inverse Universe

The Inverse Universe completely reimagines the original color for something new.



80, 10.561, 2.724



90, 14.639, 3.037



84, 7.794, 228.294



43, 4.834, 2.406



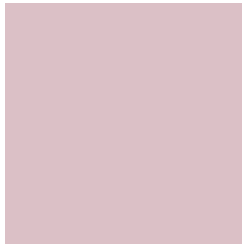
36, 68.460, 27.460



5, 23.763, 10.669

Previews

White Background



This preview shows how the CIELCh color 80, 10.563, 2.716 looks on a white background.

Color Contrast Check

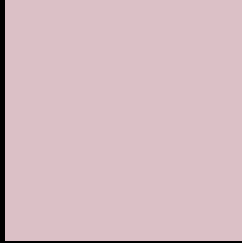
Large Text (above 18pt) WCAG AA × Fail

Any Text WCAG AA × Fail

Large Text (above 18pt) WCAG AAA × Fail

Any Text WCAG AAA × Fail

Black Background



This preview shows how the CIELCh color 80, 10.563, 2.716 looks on a black background.

Color Contrast Check

Large Text (above 18pt) WCAG AA ✓ Pass

Any Text WCAG AA ✓ Pass

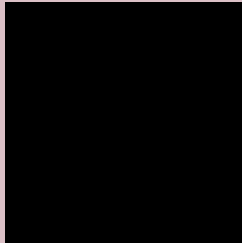
Large Text (above 18pt) WCAG AAA ✓ Pass

Any Text WCAG AAA ✓ Pass

If you want to check with other color combinations, try the [Color Contrast Checker](#).

CIELCh 80, 10.563, 2.716

Background



This preview shows how black text looks on a background with the CIELCh color 80, 10.563, 2.716.



This preview shows how white text looks on a background with the CIELCh color 80, 10.563, 2.716.

Color Blindness Simulation

Color vision deficiency is a very complex topic, and I could not describe the different causes any better than Wikipedia does, so if you want to learn more, you should check out their [article about color blindness](#).

Dichromacy



Original Color

80, 10.563, 2.716

Protanopia

80, 2.605, 324.451

Deuteranopia

80, 10.203, 2.037



Tritanopia
80, 13.036, 345.700

Trichromacy



Original Color
80, 10.563, 2.716

Protanomaly
80, 5.178, 348.824

Deuteranomaly
80, 10.203, 2.037

Tritanomaly
80, 12.238, 351.910

Monochromacy



Original Color
80, 10.563, 2.716

Achromatopsia
81, 0.010, 296.813

Achromatomaly
81, 3.489, 1.820

CSS Examples

Text

The CSS property to change the color of the text to CIELCh 80, 10.563, 2.716 is called "color". The color property can be set on classes, ids or directly on the HTML element.

This example shows how text in the color `rgb(219, 192, 198)` looks like.

```
.text, #text, p{  
    color:rgb(219, 192, 198)  
}
```

If you want to add a text shadow in that color use the text-shadow property, you can generate a text shadow directly with our [CSS Text Shadow Generator](#).

Here you see how black text with a 4 pixel rgb(219, 192, 198) colored shadow looks like.

```
.shadow{ text-shadow: 4px 4px 2px rgb(219, 192, 198) }
```

Border

The CSS property to change the border of an element to CIELCh 80, 10.563, 2.716 is called "border". The border property can be set on classes, ids or directly on the HTML element.

This example shows the color as border, it can be applied via the CSS property "border" or "border-color".

```
.border, #border, table{ border:4px solid rgb(219, 192, 198) }
```

If only the border color should be changed use the property `border-color`.

```
.border{ border-color:rgb(219, 192, 198) }
```

If you want to add a box shadow in that color use:

Here you see how a box with a 4 pixel `rgb(219, 192, 198)` colored shadow looks like.

```
.boxshadow{ -moz-box-shadow:4px 4px 4px  
4px rgb(219, 192, 198); -webkit-box-  
shadow:4px 4px 4px 4px rgb(219, 192, 198);  
box-shadow:4px 4px 4px 4px rgb(219, 192,  
198) }
```

Background

The CSS property to change the background color of an element to CIELCh 80, 10.563, 2.716 is called "background". The background property can be set on classes, ids or directly on the HTML element.

```
.background, #background, body{  
background: rgb(219, 192, 198) }
```

If only the background color should be changed can be used:

```
.background{ background-color: rgb(219,  
192, 198) }
```

This example shows the color as background, it is applied via the CSS property "background".

To optimize and compress your CSS code, you can use our [online CSS compressor and optimizer](#) based on csstidy. If you want to create a linear or radial gradient as background or border, check our [CSS Gradient Generator](#).

Hey! You found this booklet interesting? Support Converting Colors with the new Membership Option!

The pro membership hides all ads, plus gives you double the colors in the color bucket, and more awesome pro features!

[Learn more, Memberships starting at \\$2.50/m!](#)

**Follow me
on Twitter!**

@ConvertingColor