

Converting Colors

CIELCh(80, 11.162, 349.445)

Have a look what the booklet for
CIELCh(80, 11.162, 349.445)
contains.

CIELCh(80, 11.002, 351.440)	3
<i>Conversions</i>	4
<i>Details</i>	6
<i>Harmonies</i>	12
<i>Previews</i>	21
<i>Color Blindness Simulation</i>	24
<i>CSS Examples</i>	27

Color

CIELCh(80, 11.002, 351.440)

Conversions

Conversions Part 1

Format	Color
Hex	DAC0CA
RGB	218, 192, 202
RGB Percent	85%, 75%, 79%
CMY	0.1463, 0.2482, 0.2090
CMYK	0.00, 0.12, 0.07, 0.15
HSL	337°, 26%, 80%
HSV	337°, 12%, 85%
XYZ	58.2359, 56.6813, 63.5663
YIQ	200.9140, 12.2860, 8.6220

Conversions

Conversions Part 2

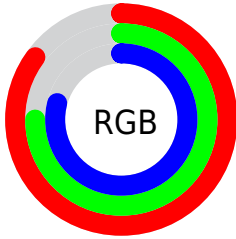
Format	Color
R _Y B	218, 192, 202
Decimal	14336202
CIE Lab	80.00, 10.88, -1.64
CIE LCh	80, 11.002, 351.440
Yxy	56.6813, 0.3263, 0.3176
Android (android.graphics.Color)	4292526282 (0xFFDAC0CA)
YUV	200.9140, 0.5354, 14.9844
Hunter-Lab	75.2870, 6.3210, 2.6412

Details

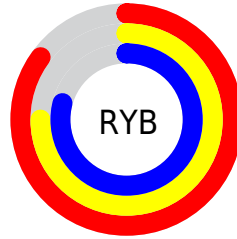
The CIELCh color **80, 11.002, 351.440** is a light color, and the websafe version is hex **CCCCCC**. A complement of this color would be **85, 10.727, 169.332**, and the grayscale version is **81, 0.010, 296.813**.

A 20% lighter version of the original color is **98, 4.358, 324.523**, and **60, 10.704, 352.317** is the 20% darker color. If you saturate the color by 10%, you get **74, 20.508, 352.535**, and if you desaturate by 10%, it is **86, 1.760, 350.276**.

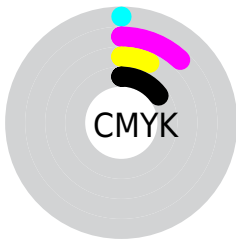
Distribution



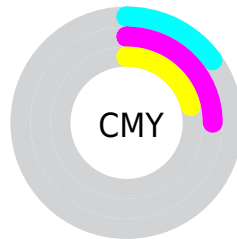
- Red (85%)
- Green (75%)
- Blue (79%)



- Red (85%)
- Yellow (75%)
- Blue (79%)



- Cyan (0%)
- Magenta (12%)
- Yellow (7%)
- Black (15%)





- Cyan (15%)
- Magenta (25%)
- Yellow (21%)


Brightness & Saturation Gradients


These gradients show how the CIELCh color 80, 11.002, 351.440 changes by changing the brightness by 10 percent. The first figure shows a shift by +10% for each color and the second figure -10%.


Similar to the brightness gradients but the following saturation gradients show a change of the CIELCh color 80, 11.002, 351.440 by changing the saturation by 10% instead.


 80, 11.002,
351.440


 80, 11.002,
351.440


 100, 11.002,
351.440


 70, 11.002,
351.440


 60, 11.002,
351.440

 50, 11.002,
351.440

 40, 11.002,
351.440

 30, 11.002,
351.440

 20, 11.002,
351.440

 10, 11.002,

351.440

■ 0, 11.002, 351.440

■ 80, 11.002,
351.440

■ 80, 11.002,
351.440

■ 74, 20.508,
352.535

■ 86, 1.760, 350.276

■ 69, 30.158,
353.779

■ 92, 7.149, 169.774

■ 64, 39.741,
355.239

■ 97, 14.589,
171.177

■ 59, 48.941,
356.998

■ 97, 12.545,
198.668

■ 55, 57.334,
359.167

■ 51, 64.447, 1.895

■ 49, 69.885, 5.361

■ 47, 73.537, 9.726

■ 46, 75.618, 13.806

Harmonies

Complementary

The Complementary color scheme is a pair of colors which are on the opposite of each other on the color wheel.



80, 11.002, 351.440



85, 10.727, 169.332

Rectangle

The Rectangle color scheme consists of four colors that form a rectangle on the color wheel.



80, 11.002, 351.440



80, 11.002, 41.440



80, 11.002, 171.440



80, 11.002, 221.440

Sweetspot

The Sweet Spot groups the original color and five complimentary colors.



80, 11.000, 351.445



97, 4.138, 350.606



80, 15.013, 312.978



51, 2.944, 350.696



0, 0.000, 0.000



53, 0.007, 296.813

Same Dimension

The Same Dimension uses a secret algorithm to generate beautiful new colors.



80, 11.000, 351.445



91, 14.716, 351.674



80, 8.923, 28.874



43, 5.241, 351.187



37, 63.672, 12.892



6, 24.213, 2.157

Inverse Universe

The Inverse Universe completely reimagines the original color for something new.



80, 11.000, 351.445



91, 14.716, 351.674



84, 8.251, 208.483



43, 5.241, 351.187



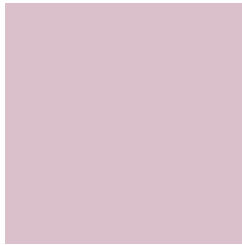
37, 63.672, 12.892



6, 24.213, 2.157

Previews

White Background



This preview shows how the CIELCh color 80, 11.002, 351.440 looks on a white background.

Color Contrast Check

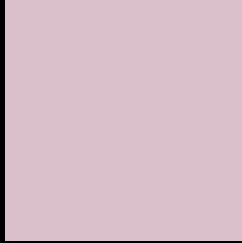
Large Text (above 18pt) WCAG AA × Fail

Any Text WCAG AA × Fail

Large Text (above 18pt) WCAG AAA × Fail

Any Text WCAG AAA × Fail

Black Background



This preview shows how the CIELCh color 80, 11.002, 351.440 looks on a black background.

Color Contrast Check

Large Text (above 18pt) WCAG AA ✓ Pass

Any Text WCAG AA ✓ Pass

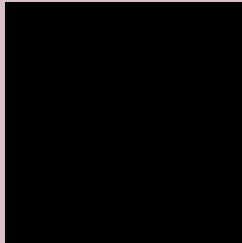
Large Text (above 18pt) WCAG AAA ✓ Pass

Any Text WCAG AAA ✓ Pass

If you want to check with other color combinations, try the [Color Contrast Checker](#).

CIELCh 80, 11.002, 351.440

Background



This preview shows how black text looks on a background with the CIELCh color 80, 11.002, 351.440.



This preview shows how white text looks on a background with the CIELCh color 80, 11.002, 351.440.

Color Blindness Simulation

Color vision deficiency is a very complex topic, and I could not describe the different causes any better than Wikipedia does, so if you want to learn more, you should check out their [article about color blindness](#).

Dichromacy



Original Color

80, 11.002, 351.440

Protanopia

80, 4.420, 304.768

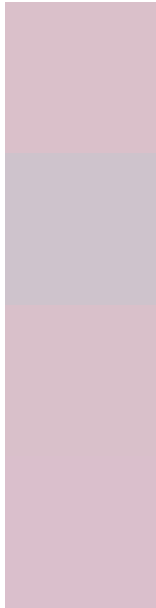
Deuteranopia

80, 10.356, 349.364



Tritanopia
80, 12.751, 341.737

Trichromacy



Original Color
80, 11.002, 351.440

Protanomaly
80, 6.289, 330.176

Deuteranomaly
80, 10.677, 350.432

Tritanomaly
80, 12.136, 345.695

Monochromacy



Original Color
80, 11.002, 351.440

Achromatopsia
81, 0.010, 296.813

Achromatomaly
81, 3.686, 353.959

CSS Examples

Text

The CSS property to change the color of the text to CIELCh 80, 11.002, 351.440 is called "color". The color property can be set on classes, ids or directly on the HTML element.

This example shows how text in the color `rgb(218, 192, 202)` looks like.

```
.text, #text, p{  
    color:rgb(218, 192, 202)  
}
```

If you want to add a text shadow in that color use the text-shadow property, you can generate a text shadow directly with our [CSS Text Shadow Generator](#).

Here you see how black text with a 4 pixel rgb(218, 192, 202) colored shadow looks like.

```
.shadow{ text-shadow: 4px 4px 2px rgb(218, 192, 202) }
```

Border

The CSS property to change the border of an element to CIELCh 80, 11.002, 351.440 is called "border". The border property can be set on classes, ids or directly on the HTML element.

This example shows the color as border, it can be applied via the CSS property "border" or "border-color".

```
.border, #border, table{ border:4px solid rgb(218, 192, 202) }
```

If only the border color should be changed use the property `border-color`.

```
.border{ border-color:rgb(218, 192, 202) }
```

If you want to add a box shadow in that color use:

Here you see how a box with a 4 pixel `rgb(218, 192, 202)` colored shadow looks like.

```
.boxshadow{ -moz-box-shadow:4px 4px 4px  
4px rgb(218, 192, 202); -webkit-box-  
shadow:4px 4px 4px 4px rgb(218, 192, 202);  
box-shadow:4px 4px 4px 4px rgb(218, 192,  
202) }
```

Background

The CSS property to change the background color of an element to CIELCh 80, 11.002, 351.440 is called "background". The background property can be set on classes, ids or directly on the HTML element.

```
.background, #background, body{  
background: rgb(218, 192, 202) }
```

If only the background color should be changed can be used:

```
.background{ background-color: rgb(218,  
192, 202) }
```

This example shows the color as background, it is applied via the CSS property "background".

To optimize and compress your CSS code, you can use our [online CSS compressor and optimizer](#) based on csstidy. If you want to create a linear or radial gradient as background or border, check our [CSS Gradient Generator](#).

Hey! You found this booklet interesting? Support Converting Colors with the new Membership Option!

The pro membership hides all ads, plus gives you double the colors in the color bucket, and more awesome pro features!

[Learn more, Memberships starting at \\$2.50/m!](#)

**Follow me
on Twitter!**

@ConvertingColor