

Converting Colors

CIELCh(80, 11.732, 35.640)

Have a look what the booklet for
CIELCh(80, 11.732, 35.640) contains.

CIELCh(80, 11.913, 35.643)	3
<i>Conversions</i>	4
<i>Details</i>	6
<i>Harmonies</i>	11
<i>Previews</i>	20
<i>Color Blindness Simulation</i>	23
<i>CSS Examples</i>	26

Color

CIELCh(80, 11.913, 35.643)

Conversions

Conversions Part 1

Format	Color
Hex	DEC0BA
RGB	222, 192, 186
RGB Percent	87%, 75%, 73%
CMY	0.1300, 0.2476, 0.2711
CMYK	0.00, 0.14, 0.16, 0.13
HSL	10°, 35%, 80%
HSV	10°, 16%, 87%
XYZ	57.7444, 56.6813, 54.2719
YIQ	200.2860, 19.8060, 4.4940

Conversions

Conversions Part 2

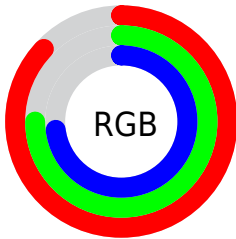
Format	Color
R _Y B	222, 193, 186
Decimal	14598330
CIE Lab	80.00, 9.68, 6.94
CIE LCh	80, 11.913, 35.643
Yxy	56.6813, 0.3423, 0.3360
Android (android.graphics.Color)	4292788410 (0xFFDEC0BA)
YUV	200.2860, -7.0430, 19.0432
Hunter-Lab	75.2870, 5.1556, 9.9606

Details

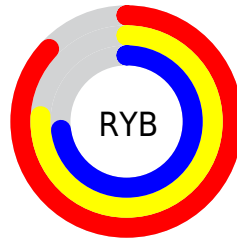
The CIELCh color **80, 11.913, 35.643** is a light color, and the websafe version is hex **FFCCCC**. A complement of this color would be **84, 10.699, 216.029**, and the grayscale version is **81, 0.010, 296.813**.

A 20% lighter version of the original color is **98, 3.919, 70.425**, and **60, 11.974, 36.703** is the 20% darker color. If you saturate the color by 10%, you get **75, 20.081, 35.846**, and if you desaturate by 10%, it is **85, 4.383, 35.534**.

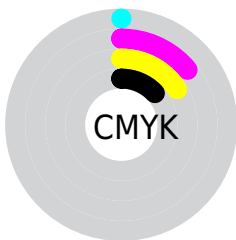
Distribution



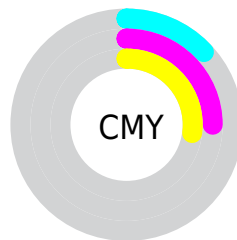
- Red (87%)
- Green (75%)
- Blue (73%)



- Red (87%)
- Yellow (76%)
- Blue (73%)



- Cyan (0%)
- Magenta (14%)
- Yellow (16%)
- Black (13%)



- Cyan (13%)
- Magenta (25%)
- Yellow (27%)

Brightness & Saturation Gradients

These gradients show how the CIELCh color 80, 11.913, 35.643 changes by changing the brightness by 10 percent. The first figure shows a shift by +10% for each color and the second figure -10%.

Similar to the brightness gradients but the following saturation gradients show a change of the CIELCh color 80, 11.913, 35.643 by changing the saturation by 10% instead.

80, 11.913, 35.643

80, 11.913, 35.643

100, 11.913,
35.643

70, 11.913, 35.643

60, 11.913, 35.643

50, 11.913, 35.643

40, 11.913, 35.643

30, 11.913, 35.643

20, 11.913, 35.643

10, 11.913, 35.643

0, 11.913, 35.643

80, 11.913, 35.643

80, 11.913, 35.643

75, 20.081, 35.846

85, 4.383, 35.534

70, 28.926, 36.202

90, 2.557, 215.969

65, 38.449, 36.776

96, 8.969, 215.946

61, 48.598, 37.614

98, 11.201,
198.758

57, 59.223, 38.736

54, 69.997, 40.089

51, 80.200, 41.420

49, 88.294, 42.081

48, 90.825, 42.318

Harmonies

Complementary

The Complementary color scheme is a pair of colors which are on the opposite of each other on the color wheel.



80, 11.913, 35.643



84, 10.699, 216.029

Rectangle

The Rectangle color scheme consists of four colors that form a rectangle on the color wheel.



80, 11.913, 35.643



80, 11.913, 85.643



80, 11.913, 215.643



80, 11.913, 265.643

Sweetspot

The Sweet Spot groups the original color and five complimentary colors.



80, 11.912, 35.655



97, 3.923, 35.504



79, 20.644, 330.369



51, 2.684, 35.524



0, 0.000, 0.000



53, 0.007, 296.813

Same Dimension

The Same Dimension uses a secret algorithm to generate beautiful new colors.



80, 11.912, 35.655



89, 15.811, 35.697



85, 13.383, 89.065



44, 4.091, 35.580



38, 76.032, 42.641



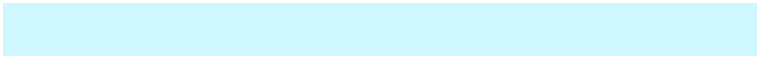
7, 22.813, 30.101

Inverse Universe

The Inverse Universe completely reimagines the original color for something new.



84, 10.699, 216.029



95, 13.903, 216.108



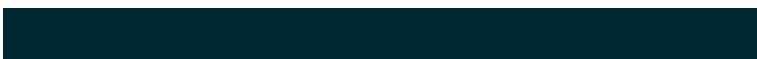
80, 13.342, 273.385



46, 3.851, 215.911



56, 32.963, 228.175



14, 13.590, 222.332

Previews

White Background



This preview shows how the CIELCh color 80, 11.913, 35.643 looks on a white background.

Color Contrast Check

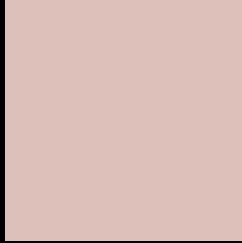
Large Text (above 18pt) WCAG AA × Fail

Any Text WCAG AA × Fail

Large Text (above 18pt) WCAG AAA × Fail

Any Text WCAG AAA × Fail

Black Background



This preview shows how the CIELCh color 80, 11.913, 35.643 looks on a black background.

Color Contrast Check

Large Text (above 18pt) WCAG AA ✓ Pass

Any Text WCAG AA ✓ Pass

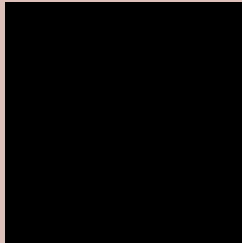
Large Text (above 18pt) WCAG AAA ✓ Pass

Any Text WCAG AAA ✓ Pass

If you want to check with other color combinations, try the [Color Contrast Checker](#).

CIELCh 80, 11.913, 35.643

Background



This preview shows how black text looks on a background with the CIELCh color 80, 11.913, 35.643.

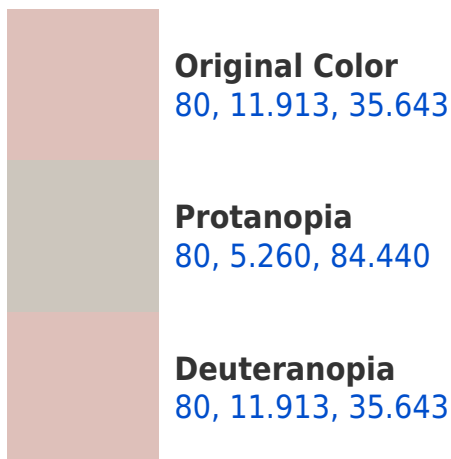


This preview shows how white text looks on a background with the CIELCh color 80, 11.913, 35.643.

Color Blindness Simulation

Color vision deficiency is a very complex topic, and I could not describe the different causes any better than Wikipedia does, so if you want to learn more, you should check out their [article about color blindness](#).

Dichromacy





Tritanopia
80, 15.203, 349.103

Trichromacy



Original Color
80, 11.913, 35.643

Protanomaly
80, 6.765, 58.440

Deuteranomaly
80, 11.913, 35.643

Tritanomaly
80, 12.900, 3.748

Monochromacy



Original Color
80, 11.913, 35.643

Achromatopsia
81, 0.010, 296.813

Achromatomaly
80, 4.215, 34.143

CSS Examples

Text

The CSS property to change the color of the text to CIELCh 80, 11.913, 35.643 is called "color". The color property can be set on classes, ids or directly on the HTML element.

This example shows how text in the color `rgb(222, 192, 186)` looks like.

```
.text, #text, p{  
    color:rgb(222, 192, 186)  
}
```

If you want to add a text shadow in that color use the text-shadow property, you can generate a text shadow directly with our [CSS Text Shadow Generator](#).

Here you see how black text with a 4 pixel rgb(222, 192, 186) colored shadow looks like.

```
.shadow{ text-shadow: 4px 4px 2px rgb(222, 192, 186) }
```

Border

The CSS property to change the border of an element to CIELCh 80, 11.913, 35.643 is called "border". The border property can be set on classes, ids or directly on the HTML element.

This example shows the color as border, it can be applied via the CSS property "border" or "border-color".

```
.border, #border, table{ border:4px solid rgb(222, 192, 186) }
```

If only the border color should be changed use the property `border-color`.

```
.border{ border-color:rgb(222, 192, 186) }
```

If you want to add a box shadow in that color use:

Here you see how a box with a 4 pixel `rgb(222, 192, 186)` colored shadow looks like.

```
.boxshadow{ -moz-box-shadow:4px 4px 4px  
4px rgb(222, 192, 186); -webkit-box-  
shadow:4px 4px 4px 4px rgb(222, 192, 186);  
box-shadow:4px 4px 4px 4px rgb(222, 192,  
186) }
```

Background

The CSS property to change the background color of an element to CIELCh 80, 11.913, 35.643 is called "background". The background property can be set on classes, ids or directly on the HTML element.

```
.background, #background, body{  
background: rgb(222, 192, 186) }
```

If only the background color should be changed can be used:

```
.background{ background-color: rgb(222,  
192, 186) }
```

This example shows the color as background, it is applied via the CSS property "background".

To optimize and compress your CSS code, you can use our [online CSS compressor and optimizer](#) based on csstidy. If you want to create a linear or radial gradient as background or border, check our [CSS Gradient Generator](#).

Hey! You found this booklet interesting? Support Converting Colors with the new Membership Option!

The pro membership hides all ads, plus gives you double the colors in the color bucket, and more awesome pro features!

[Learn more, Memberships starting at \\$2.50/m!](#)

**Follow me
on Twitter!**

@ConvertingColor