

Converting Colors

CIELCh(80, 12.173, 2.639)

Have a look what the booklet for
CIELCh(80, 12.173, 2.639) contains.

CIELCh(80, 12.161, 2.633)	3
<i>Conversions</i>	4
<i>Details</i>	6
<i>Harmonies</i>	11
<i>Previews</i>	20
<i>Color Blindness Simulation</i>	23
<i>CSS Examples</i>	26

Color

CIELCh(80, 12.161, 2.633)

Conversions

Conversions Part 1

Format	Color
Hex	DEBFC6
RGB	222, 191, 198
RGB Percent	87%, 75%, 78%
CMY	0.1306, 0.2521, 0.2247
CMYK	0.00, 0.14, 0.11, 0.13
HSL	346°, 32%, 81%
HSV	346°, 14%, 87%
XYZ	58.7594, 56.6813, 61.0935
YIQ	201.0670, 16.2290, 8.7490

Conversions

Conversions Part 2

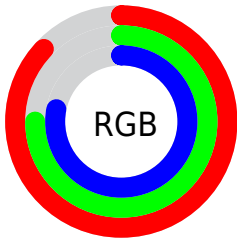
Format	Color
R _Y B	222, 191, 198
Decimal	14598086
CIE Lab	80.00, 12.15, 0.56
CIE LCh	80, 12.161, 2.633
Yxy	56.6813, 0.3329, 0.3211
Android (android.graphics.Color)	4292788166 (0xFFDEBFC6)
YUV	201.0670, -1.5120, 18.3582
Hunter-Lab	75.2870, 7.5622, 4.5885

Details

The CIELCh color **80, 12.161, 2.633** is a light color, and the websafe version is hex **FFCCCC**. A complement of this color would be **86, 11.550, 180.073**, and the grayscale version is **81, 0.010, 296.813**.

A 20% lighter version of the original color is **98, 4.981, 324.553**, and **60, 12.010, 4.396** is the 20% darker color. If you saturate the color by 10%, you get **74, 21.343, 3.849**, and if you desaturate by 10%, it is **86, 3.376, 1.513**.

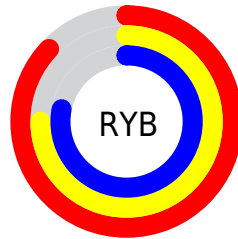
Distribution



Red (87%)

Green (75%)

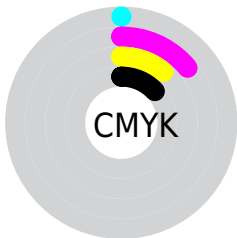
Blue (78%)



Red (87%)

Yellow (75%)

Blue (78%)

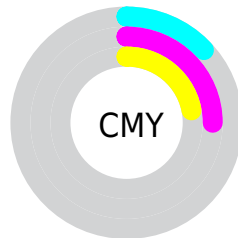


Cyan (0%)

Magenta (14%)

Yellow (11%)

Black (13%)



Cyan (13%)

Magenta (25%)

Yellow (22%)

Brightness & Saturation Gradients

These gradients show how the CIELCh color 80, 12.161, 2.633 changes by changing the brightness by 10 percent. The first figure shows a shift by +10% for each color and the second figure -10%.

Similar to the brightness gradients but the following saturation gradients show a change of the CIELCh color 80, 12.161, 2.633 by changing the saturation by 10% instead.

80, 12.161, 2.633

80, 12.161, 2.633

100, 12.161, 2.633

70, 12.161, 2.633

60, 12.161, 2.633

50, 12.161, 2.633

40, 12.161, 2.633

30, 12.161, 2.633

20, 12.161, 2.633

10, 12.161, 2.633

0, 12.161, 2.633

80, 12.161, 2.633

80, 12.161, 2.633

74, 21.343, 3.849

86, 3.376, 1.513

69, 30.833, 5.283

92, 4.969, 180.910

63, 40.454, 7.032

98, 11.804,
184.155

59, 49.929, 9.209

98, 11.250,
198.755

54, 58.891, 11.957

51, 66.951, 15.439

49, 73.839, 19.780

47, 79.561, 24.946

47, 82.722, 28.186

Harmonies

Complementary

The Complementary color scheme is a pair of colors which are on the opposite of each other on the color wheel.



80, 12.161, 2.633



86, 11.550, 180.073

Rectangle

The Rectangle color scheme consists of four colors that form a rectangle on the color wheel.



80, 12.161, 2.633



80, 12.161, 52.633



80, 12.161, 182.633



80, 12.161, 232.633

Sweetspot

The Sweet Spot groups the original color and five complimentary colors.



80, 12.159, 2.640



97, 3.805, 1.520



80, 18.629, 318.400



51, 2.709, 1.617



0, 0.000, 0.000



53, 0.007, 296.813

Same Dimension

The Same Dimension uses a secret algorithm to generate beautiful new colors.



80, 12.159, 2.640



89, 16.692, 3.002



82, 9.656, 46.709



43, 4.841, 2.138



36, 68.307, 27.173



5, 23.767, 10.513

Inverse Universe

The Inverse Universe completely reimagines the original color for something new.



80, 12.159, 2.640



89, 16.692, 3.002



84, 8.889, 228.411



43, 4.841, 2.138



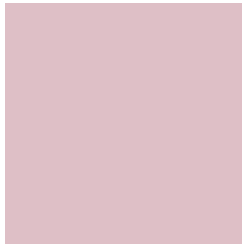
36, 68.307, 27.173



5, 23.767, 10.513

Previews

White Background



This preview shows how the CIELCh color 80, 12.161, 2.633 looks on a white background.

Color Contrast Check

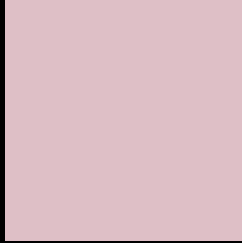
Large Text (above 18pt) WCAG AA × Fail

Any Text WCAG AA × Fail

Large Text (above 18pt) WCAG AAA × Fail

Any Text WCAG AAA × Fail

Black Background



This preview shows how the CIE LCh color 80, 12.161, 2.633 looks on a black background.

Color Contrast Check

Large Text (above 18pt) WCAG AA ✓ Pass

Any Text WCAG AA ✓ Pass

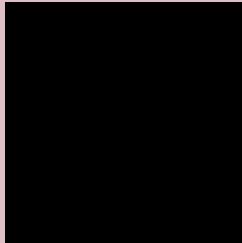
Large Text (above 18pt) WCAG AAA ✓ Pass

Any Text WCAG AAA ✓ Pass

If you want to check with other color combinations, try the [Color Contrast Checker](#).

CIELCh 80, 12.161, 2.633

Background



This preview shows how black text looks on a background with the CIELCh color 80, 12.161, 2.633.



This preview shows how white text looks on a background with the CIELCh color 80, 12.161, 2.633.

Color Blindness Simulation

Color vision deficiency is a very complex topic, and I could not describe the different causes any better than Wikipedia does, so if you want to learn more, you should check out their [article about color blindness](#).

Dichromacy





Tritanopia
80, 14.294, 349.280

Trichromacy



Original Color
80, 12.161, 2.633

Protanomaly
80, 5.826, 352.657

Deuteranomaly
80, 10.431, 5.508

Tritanomaly
80, 13.806, 353.095

Monochromacy



Original Color
80, 12.161, 2.633

Achromatopsia
81, 0.010, 296.813

Achromatomaly
81, 4.715, 359.943

CSS Examples

Text

The CSS property to change the color of the text to CIELCh 80, 12.161, 2.633 is called "color". The color property can be set on classes, ids or directly on the HTML element.

This example shows how text in the color `rgb(222, 191, 198)` looks like.

```
.text, #text, p{  
    color:rgb(222, 191, 198)  
}
```

If you want to add a text shadow in that color use the text-shadow property, you can generate a text shadow directly with our [CSS Text Shadow Generator](#).

Here you see how black text with a 4 pixel rgb(222, 191, 198) colored shadow looks like.

```
.shadow{ text-shadow: 4px 4px 2px rgb(222, 191, 198) }
```

Border

The CSS property to change the border of an element to CIELCh 80, 12.161, 2.633 is called "border". The border property can be set on classes, ids or directly on the HTML element.

This example shows the color as border, it can be applied via the CSS property "border" or "border-color".

```
.border, #border, table{ border:4px solid rgb(222, 191, 198) }
```

If only the border color should be changed use the property `border-color`.

```
.border{ border-color:rgb(222, 191, 198) }
```

If you want to add a box shadow in that color use:

Here you see how a box with a 4 pixel `rgb(222, 191, 198)` colored shadow looks like.

```
.boxshadow{ -moz-box-shadow:4px 4px 4px  
4px rgb(222, 191, 198); -webkit-box-  
shadow:4px 4px 4px 4px rgb(222, 191, 198);  
box-shadow:4px 4px 4px 4px rgb(222, 191,  
198) }
```

Background

The CSS property to change the background color of an element to CIELCh 80, 12.161, 2.633 is called "background". The background property can be set on classes, ids or directly on the HTML element.

```
.background, #background, body{  
background: rgb(222, 191, 198) }
```

If only the background color should be changed can be used:

```
.background{ background-color: rgb(222,  
191, 198) }
```

This example shows the color as background, it is applied via the CSS property "background".

To optimize and compress your CSS code, you can use our [online CSS compressor and optimizer](#) based on csstidy. If you want to create a linear or radial gradient as background or border, check our [CSS Gradient Generator](#).

Hey! You found this booklet interesting? Support Converting Colors with the new Membership Option!

The pro membership hides all ads, plus gives you double the colors in the color bucket, and more awesome pro features!

[Learn more, Memberships starting at \\$2.50/m!](#)

**Follow me
on Twitter!**

@ConvertingColor