

Converting Colors

CIELCh(80, 12.436, 33.666)

Have a look what the booklet for
CIELCh(80, 12.436, 33.666) contains.

CIELCh(80, 12.535, 32.457)	3
<i>Conversions</i>	4
<i>Details</i>	6
<i>Harmonies</i>	11
<i>Previews</i>	20
<i>Color Blindness Simulation</i>	23
<i>CSS Examples</i>	26

Color

CIELCh(80, 12.535, 32.457)

Conversions

Conversions Part 1

Format	Color
Hex	DFBFBA
RGB	223, 191, 186
RGB Percent	87%, 75%, 73%
CMY	0.1243, 0.2498, 0.2695
CMYK	0.00, 0.14, 0.17, 0.12
HSL	8°, 37%, 80%
HSV	8°, 17%, 88%
XYZ	58.1116, 56.6813, 54.4930
YIQ	199.9980, 20.6770, 5.2290

Conversions

Conversions Part 2

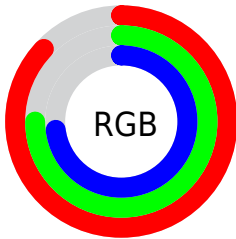
Format	Color
R _Y B	223, 192, 186
Decimal	14663610
CIE Lab	80.00, 10.58, 6.73
CIE LCh	80, 12.535, 32.457
Yxy	56.6813, 0.3433, 0.3348
Android (android.graphics.Color)	4292853690 (0xFFDFBFBA)
YUV	199.9980, -6.9010, 20.1728
Hunter-Lab	75.2870, 6.0261, 9.7866

Details

The CIELCh color **80, 12.535, 32.457** is a light color, and the websafe version is hex **FFCCCC**. A complement of this color would be **85, 11.216, 212.346**, and the grayscale version is **81, 0.010, 296.813**.

A 20% lighter version of the original color is **98, 3.799, 61.384**, and **60, 12.221, 33.732** is the 20% darker color. If you saturate the color by 10%, you get **75, 20.957, 32.832**, and if you desaturate by 10%, it is **85, 4.769, 32.198**.

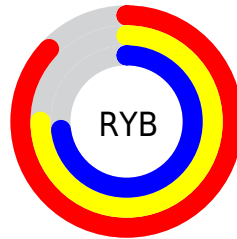
Distribution



Red (87%)

Green (75%)

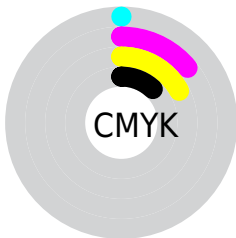
Blue (73%)



Red (87%)

Yellow (75%)

Blue (73%)

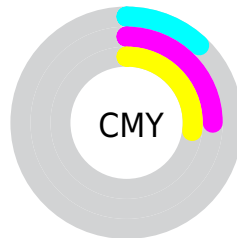


Cyan (0%)

Magenta (14%)

Yellow (17%)

Black (12%)



Cyan (12%)

Magenta (25%)

Yellow (27%)

Brightness & Saturation Gradients

These gradients show how the CIELCh color 80, 12.535, 32.457 changes by changing the brightness by 10 percent. The first figure shows a shift by +10% for each color and the second figure -10%.

Similar to the brightness gradients but the following saturation gradients show a change of the CIELCh color 80, 12.535, 32.457 by changing the saturation by 10% instead.

80, 12.535, 32.457

80, 12.535, 32.457

100, 12.535,
32.457

70, 12.535, 32.457

60, 12.535, 32.457

50, 12.535, 32.457

40, 12.535, 32.457

30, 12.535, 32.457

20, 12.535, 32.457

10, 12.535, 32.457

0, 12.535, 32.457

80, 12.535, 32.457

80, 12.535, 32.457

75, 20.957, 32.832

85, 4.769, 32.198

70, 30.067, 33.386

91, 2.387, 212.501

65, 39.852, 34.190

96, 8.993, 212.326

60, 50.238, 35.298

98, 10.729,
198.790

56, 61.048, 36.742

53, 71.927, 38.470

50, 82.114, 40.209

48, 90.004, 41.257

48, 92.222, 41.616

Harmonies

Complementary

The Complementary color scheme is a pair of colors which are on the opposite of each other on the color wheel.



80, 12.535, 32.457



85, 11.216, 212.346

Rectangle

The Rectangle color scheme consists of four colors that form a rectangle on the color wheel.



80, 12.535, 32.457



80, 12.535, 82.457



80, 12.535, 212.457



80, 12.535, 262.457

Sweetspot

The Sweet Spot groups the original color and five complimentary colors.



80, 12.534, 32.468



97, 4.013, 32.140



80, 21.704, 329.280



51, 2.746, 32.169



0, 0.000, 0.000



53, 0.007, 296.813

Same Dimension

The Same Dimension uses a secret algorithm to generate beautiful new colors.



80, 12.534, 32.468



88, 17.098, 32.581



85, 13.335, 86.233



44, 4.185, 32.279



38, 76.858, 41.896



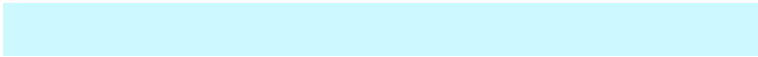
7, 23.288, 28.197

Inverse Universe

The Inverse Universe completely reimagines the original color for something new.



85, 11.216, 212.346



95, 14.904, 212.386



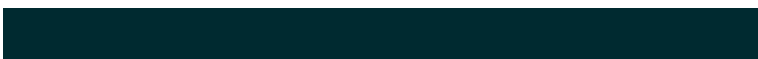
80, 13.202, 270.719



46, 3.937, 212.334



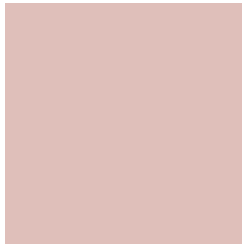
58, 33.132, 221.398



15, 13.758, 216.808

Previews

White Background



This preview shows how the CIELCh color 80, 12.535, 32.457 looks on a white background.

Color Contrast Check

Large Text (above 18pt) WCAG AA × Fail

Any Text WCAG AA × Fail

Large Text (above 18pt) WCAG AAA × Fail

Any Text WCAG AAA × Fail

Black Background



This preview shows how the CIELCh color 80, 12.535, 32.457 looks on a black background.

Color Contrast Check

Large Text (above 18pt) WCAG AA ✓ Pass

Any Text WCAG AA ✓ Pass

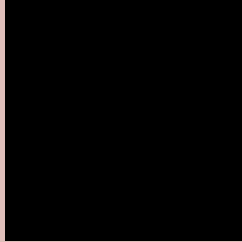
Large Text (above 18pt) WCAG AAA ✓ Pass

Any Text WCAG AAA ✓ Pass

If you want to check with other color combinations, try the [Color Contrast Checker](#).

CIELCh 80, 12.535, 32.457

Background



This preview shows how black text looks on a background with the CIELCh color 80, 12.535, 32.457.

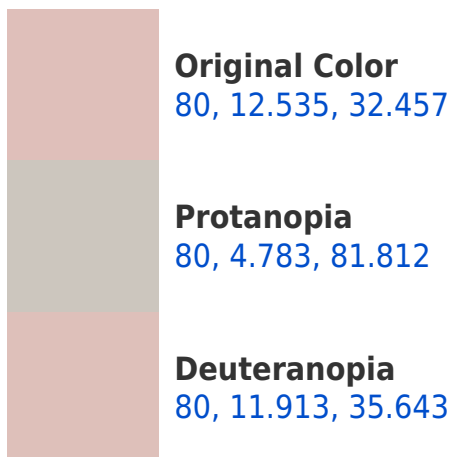


This preview shows how white text looks on a background with the CIELCh color 80, 12.535, 32.457.

Color Blindness Simulation

Color vision deficiency is a very complex topic, and I could not describe the different causes any better than Wikipedia does, so if you want to learn more, you should check out their [article about color blindness](#).

Dichromacy





Tritanopia
80, 15.276, 351.601

Trichromacy



Original Color
80, 12.535, 32.457

Protanomaly
80, 6.753, 52.985

Deuteranomaly
80, 11.913, 35.643

Tritanomaly
80, 13.265, 4.260

Monochromacy



Original Color
80, 12.535, 32.457

Achromatopsia
81, 0.010, 296.813

Achromatomaly
80, 4.215, 34.143

CSS Examples

Text

The CSS property to change the color of the text to CIELCh 80, 12.535, 32.457 is called "color". The color property can be set on classes, ids or directly on the HTML element.

This example shows how text in the color `rgb(223, 191, 186)` looks like.

```
.text, #text, p{  
    color:rgb(223, 191, 186)  
}
```

If you want to add a text shadow in that color use the text-shadow property, you can generate a text shadow directly with our [CSS Text Shadow Generator](#).

Here you see how black text with a 4 pixel rgb(223, 191, 186) colored shadow looks like.

```
.shadow{ text-shadow: 4px 4px 2px rgb(223, 191, 186) }
```

Border

The CSS property to change the border of an element to CIELCh 80, 12.535, 32.457 is called "border". The border property can be set on classes, ids or directly on the HTML element.

This example shows the color as border, it can be applied via the CSS property "border" or "border-color".

```
.border, #border, table{ border:4px solid rgb(223, 191, 186) }
```

If only the border color should be changed use the property border-color.

```
.border{ border-color:rgb(223, 191, 186) }
```

If you want to add a box shadow in that color use:

Here you see how a box with a 4 pixel rgb(223, 191, 186) colored shadow looks like.

```
.boxshadow{ -moz-box-shadow:4px 4px 4px  
4px rgb(223, 191, 186); -webkit-box-  
shadow:4px 4px 4px 4px rgb(223, 191, 186);  
box-shadow:4px 4px 4px 4px rgb(223, 191,  
186) }
```

Background

The CSS property to change the background color of an element to CIELCh 80, 12.535, 32.457 is called "background". The background property can be set on classes, ids or directly on the HTML element.

```
.background, #background, body{  
background: rgb(223, 191, 186) }
```

If only the background color should be changed can be used:

```
.background{ background-color: rgb(223,  
191, 186) }
```

This example shows the color as background, it is applied via the CSS property "background".

To optimize and compress your CSS code, you can use our [online CSS compressor and optimizer](#) based on csstidy. If you want to create a linear or radial gradient as background or border, check our [CSS Gradient Generator](#).

Hey! You found this booklet interesting? Support Converting Colors with the new Membership Option!

The pro membership hides all ads, plus gives you double the colors in the color bucket, and more awesome pro features!

[Learn more, Memberships starting at \\$2.50/m!](#)

**Follow me
on Twitter!**

@ConvertingColor