

Converting Colors

CIELCh(80, 13.160, 16.914)

Have a look what the booklet for
CIELCh(80, 13.160, 16.914) contains.

CIELCh(80, 13.286, 15.890)	3
<i>Conversions</i>	4
<i>Details</i>	6
<i>Harmonies</i>	11
<i>Previews</i>	20
<i>Color Blindness Simulation</i>	23
<i>CSS Examples</i>	26

Color

CIELCh(80, 13.286, 15.890)

Conversions

Conversions Part 1

Format	Color
Hex	E1BEC0
RGB	225, 190, 192
RGB Percent	88%, 75%, 75%
CMY	0.1174, 0.2546, 0.2468
CMYK	0.00, 0.16, 0.15, 0.12
HSL	357°, 37%, 81%
HSV	357°, 16%, 88%
XYZ	59.0206, 56.6813, 57.7360
YIQ	200.6930, 20.2180, 8.0420

Conversions

Conversions Part 2

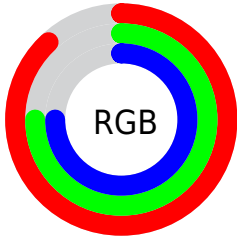
Format	Color
R _Y B	225, 190, 192
Decimal	14794432
CIE Lab	80.00, 12.78, 3.64
CIE LCh	80, 13.286, 15.890
Yxy	56.6813, 0.3403, 0.3268
Android (android.graphics.Color)	4292984512 (0xFFE1BEC0)
YUV	200.6930, -4.2856, 21.3172
Hunter-Lab	75.2870, 8.1814, 7.2326

Details

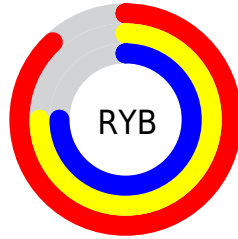
The CIELCh color **80, 13.286, 15.890** is a light color, and the websafe version is hex **FFCCCC**. A complement of this color would be **87, 12.142, 193.654**, and the grayscale version is **81, 0.010, 296.813**.

A 20% lighter version of the original color is **98, 3.349, 1.716**, and **60, 12.953, 15.774** is the 20% darker color. If you saturate the color by 10%, you get **74, 22.601, 16.993**, and if you desaturate by 10%, it is **86, 4.575, 14.952**.

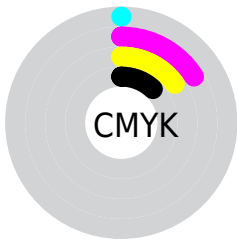
Distribution



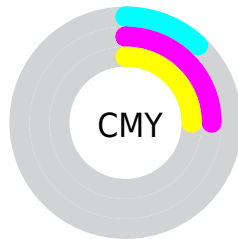
- Red (88%)
- Green (75%)
- Blue (75%)



- Red (88%)
- Yellow (75%)
- Blue (75%)



- Cyan (0%)
- Magenta (16%)
- Yellow (15%)
- Black (12%)



- Cyan (12%)
- Magenta (25%)
- Yellow (25%)


Brightness & Saturation Gradients

These gradients show how the CIELCh color 80, 13.286, 15.890 changes by changing the brightness by 10 percent. The first figure shows a shift by +10% for each color and the second figure -10%.

Similar to the brightness gradients but the following saturation gradients show a change of the CIELCh color 80, 13.286, 15.890 by changing the saturation by 10% instead.

 80, 13.286, 15.890

 80, 13.286, 15.890

 100, 13.286,
15.890

 70, 13.286, 15.890

 60, 13.286, 15.890

 50, 13.286, 15.890

 40, 13.286, 15.890

 30, 13.286, 15.890

 20, 13.286, 15.890

 10, 13.286, 15.890

 0, 13.286, 15.890

 80, 13.286, 15.890

 80, 13.286, 15.890

74, 22.601, 16.993

86, 4.575, 14.952

68, 32.480, 18.364

92, 3.534, 194.549

63, 42.801, 20.115

98, 10.150,
198.830

58, 53.344, 22.365

54, 63.799, 25.234

51, 73.796, 28.785

49, 82.907, 32.870

47, 90.359, 36.871

47, 92.889, 38.199

Harmonies

Complementary

The Complementary color scheme is a pair of colors which are on the opposite of each other on the color wheel.



80, 13.286, 15.890



87, 12.142, 193.654

Rectangle

The Rectangle color scheme consists of four colors that form a rectangle on the color wheel.



80, 13.286, 15.890



80, 13.286, 65.890



80, 13.286, 195.890



80, 13.286, 245.890

Sweetspot

The Sweet Spot groups the original color and five complimentary colors.



80, 13.284, 15.898



97, 4.552, 14.899



81, 22.005, 323.418



51, 3.114, 14.971



0, 0.000, 0.000



53, 0.007, 296.813

Same Dimension

The Same Dimension uses a secret algorithm to generate beautiful new colors.



80, 13.284, 15.898



87, 18.191, 16.265



84, 10.981, 66.112



44, 4.735, 15.320



36, 76.727, 37.637



6, 25.415, 18.541

Inverse Universe

The Inverse Universe completely reimagines the original color for something new.



80, 13.284, 15.898



87, 18.191, 16.265



83, 10.373, 249.893



44, 4.735, 15.320



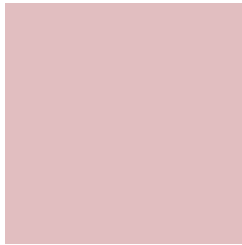
36, 76.727, 37.637



6, 25.415, 18.541

Previews

White Background



This preview shows how the CIELCh color 80, 13.286, 15.890 looks on a white background.

Color Contrast Check

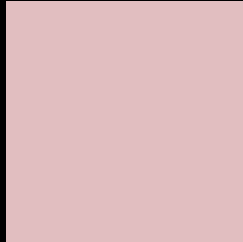
Large Text (above 18pt) WCAG AA × Fail

Any Text WCAG AA × Fail

Large Text (above 18pt) WCAG AAA × Fail

Any Text WCAG AAA × Fail

Black Background



This preview shows how the CIELCh color 80, 13.286, 15.890 looks on a black background.

Color Contrast Check

Large Text (above 18pt) WCAG AA ✓ Pass

Any Text WCAG AA ✓ Pass

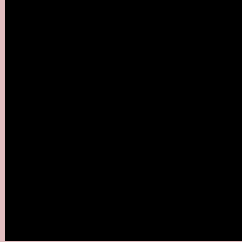
Large Text (above 18pt) WCAG AAA ✓ Pass

Any Text WCAG AAA ✓ Pass

If you want to check with other color combinations, try the [Color Contrast Checker](#).

CIELCh 80, 13.286, 15.890

Background



This preview shows how black text looks on a background with the CIELCh color 80, 13.286, 15.890.



This preview shows how white text looks on a background with the CIELCh color 80, 13.286, 15.890.

Color Blindness Simulation

Color vision deficiency is a very complex topic, and I could not describe the different causes any better than Wikipedia does, so if you want to learn more, you should check out their [article about color blindness](#).

Dichromacy



Original Color

80, 13.286, 15.890

Protanopia

80, 1.805, 55.192

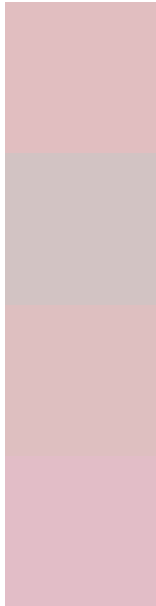
Deuteranopia

80, 10.564, 20.196



Tritanopia
80, 16.183, 351.319

Trichromacy



Original Color
80, 13.286, 15.890

Protanomaly
80, 5.584, 19.746

Deuteranomaly
80, 11.722, 17.722

Tritanomaly
80, 14.801, 359.668

Monochromacy



Original Color
80, 13.286, 15.890

Achromatopsia
81, 0.010, 296.813

Achromatomaly
81, 4.846, 13.399

CSS Examples

Text

The CSS property to change the color of the text to CIELCh 80, 13.286, 15.890 is called "color". The color property can be set on classes, ids or directly on the HTML element.

This example shows how text in the color `rgb(225, 190, 192)` looks like.

```
.text, #text, p{  
    color:rgb(225, 190, 192)  
}
```

If you want to add a text shadow in that color use the text-shadow property, you can generate a text shadow directly with our [CSS Text Shadow Generator](#).

Here you see how black text with a 4 pixel rgb(225, 190, 192) colored shadow looks like.

```
.shadow{ text-shadow: 4px 4px 2px rgb(225, 190, 192) }
```

Border

The CSS property to change the border of an element to CIELCh 80, 13.286, 15.890 is called "border". The border property can be set on classes, ids or directly on the HTML element.

This example shows the color as border, it can be applied via the CSS property "border" or "border-color".

```
.border, #border, table{ border:4px solid rgb(225, 190, 192) }
```

If only the border color should be changed use the property `border-color`.

```
.border{ border-color:rgb(225, 190, 192) }
```

If you want to add a box shadow in that color use:

Here you see how a box with a 4 pixel `rgb(225, 190, 192)` colored shadow looks like.

```
.boxshadow{ -moz-box-shadow:4px 4px 4px  
4px rgb(225, 190, 192); -webkit-box-  
shadow:4px 4px 4px 4px rgb(225, 190, 192);  
box-shadow:4px 4px 4px 4px rgb(225, 190,  
192) }
```

Background

The CSS property to change the background color of an element to CIELCh 80, 13.286, 15.890 is called "background". The background property can be set on classes, ids or directly on the HTML element.

```
.background, #background, body{  
background: rgb(225, 190, 192) }
```

If only the background color should be changed can be used:

```
.background{ background-color: rgb(225,  
190, 192) }
```

This example shows the color as background, it is applied via the CSS property "background".

To optimize and compress your CSS code, you can use our [online CSS compressor and optimizer](#) based on csstidy. If you want to create a linear or radial gradient as background or border, check our [CSS Gradient Generator](#).

Hey! You found this booklet interesting? Support Converting Colors with the new Membership Option!

The pro membership hides all ads, plus gives you double the colors in the color bucket, and more awesome pro features!

[Learn more, Memberships starting at \\$2.50/m!](#)

**Follow me
on Twitter!**

@ConvertingColor