

Converting Colors

CIELCh(80, 13.551, 38.646)

Have a look what the booklet for
CIELCh(80, 13.551, 38.646) contains.

CIELCh(80, 13.419, 38.646)	3
<i>Conversions</i>	4
<i>Details</i>	6
<i>Harmonies</i>	11
<i>Previews</i>	20
<i>Color Blindness Simulation</i>	23
<i>CSS Examples</i>	26

Color

CIELCh(80, 13.419, 38.646)

Conversions

Conversions Part 1

Format	Color
Hex	E0BFB7
RGB	224, 191, 183
RGB Percent	88%, 75%, 72%
CMY	0.1206, 0.2500, 0.2814
CMYK	0.00, 0.15, 0.18, 0.12
HSL	12°, 40%, 80%
HSV	12°, 18%, 88%
XYZ	58.0720, 56.6813, 52.8087
YIQ	199.9550, 22.2360, 4.5080

Conversions

Conversions Part 2

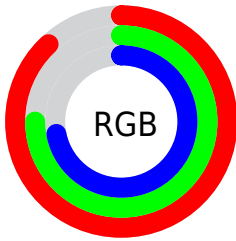
Format	Color
R _Y B	224, 193, 183
Decimal	14729143
CIE Lab	80.00, 10.48, 8.38
CIE LCh	80, 13.419, 38.646
Yxy	56.6813, 0.3466, 0.3383
Android (android.graphics.Color)	4292919223 (0xFFE0BFB7)
YUV	199.9550, -8.3588, 21.0875
Hunter-Lab	75.2870, 5.9322, 11.1130

Details

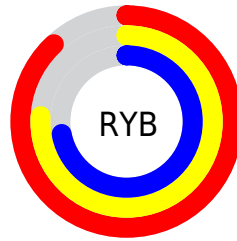
The CIELCh color **80, 13.419, 38.646** is a light color, and the websafe version is hex **FFCCCC**. A complement of this color would be **84, 11.896, 219.573**, and the grayscale version is **81, 0.010, 296.813**.

A 20% lighter version of the original color is **98, 4.955, 74.563**, and **60, 13.220, 40.276** is the 20% darker color. If you saturate the color by 10%, you get **75, 21.644, 38.719**, and if you desaturate by 10%, it is **85, 5.834, 38.683**.

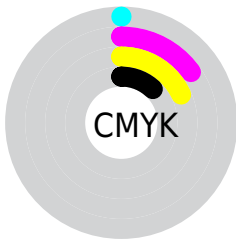
Distribution



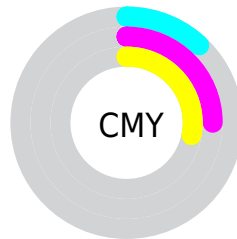
- Red (88%)
- Green (75%)
- Blue (72%)



- Red (88%)
- Yellow (76%)
- Blue (72%)



- Cyan (0%)
- Magenta (15%)
- Yellow (18%)
- Black (12%)



- Cyan (12%)
- Magenta (25%)
- Yellow (28%)

Brightness & Saturation Gradients

These gradients show how the CIELCh color 80, 13.419, 38.646 changes by changing the brightness by 10 percent. The first figure shows a shift by +10% for each color and the second figure -10%.

Similar to the brightness gradients but the following saturation gradients show a change of the CIELCh color 80, 13.419, 38.646 by changing the saturation by 10% instead.

80, 13.419, 38.646

80, 13.419, 38.646

100, 13.419,
38.646

70, 13.419, 38.646

60, 13.419, 38.646

50, 13.419, 38.646

40, 13.419, 38.646

30, 13.419, 38.646

20, 13.419, 38.646

10, 13.419, 38.646

0, 13.419, 38.646

80, 13.419, 38.646

80, 13.419, 38.646

75, 21.644, 38.719

85, 5.834, 38.683

70, 30.548, 38.937

90, 1.160, 219.475

66, 40.132, 39.357

95, 7.625, 219.294

62, 50.340, 40.013

98, 10.419,
198.811

58, 61.009, 40.907

54, 71.760, 41.952

52, 81.743, 42.837

49, 89.417, 42.987

49, 90.602, 43.061

Harmonies

Complementary

The Complementary color scheme is a pair of colors which are on the opposite of each other on the color wheel.



80, 13.419, 38.646



84, 11.896, 219.573

Rectangle

The Rectangle color scheme consists of four colors that form a rectangle on the color wheel.



80, 13.419, 38.646



80, 13.419, 88.646



80, 13.419, 218.646



80, 13.419, 268.646

Sweetspot

The Sweet Spot groups the original color and five complimentary colors.



80, 13.418, 38.657



97, 3.854, 38.664



79, 23.219, 331.079



51, 2.637, 38.674



0, 0.000, 0.000



53, 0.007, 296.813

Same Dimension

The Same Dimension uses a secret algorithm to generate beautiful new colors.



80, 13.418, 38.657



88, 18.207, 38.666



85, 15.493, 90.128



44, 4.018, 38.681



39, 75.187, 43.443



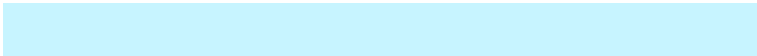
8, 22.404, 31.890

Inverse Universe

The Inverse Universe completely reimagines the original color for something new.



84, 11.896, 219.573



93, 15.691, 219.762



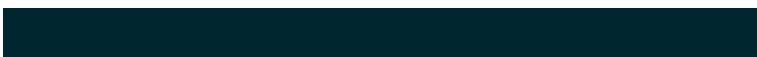
79, 15.489, 274.997



46, 3.788, 219.266



54, 33.179, 234.373



14, 13.540, 227.456

Previews

White Background



This preview shows how the CIELCh color 80, 13.419, 38.646 looks on a white background.

Color Contrast Check

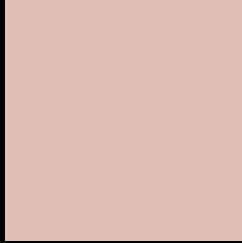
Large Text (above 18pt) WCAG AA × Fail

Any Text WCAG AA × Fail

Large Text (above 18pt) WCAG AAA × Fail

Any Text WCAG AAA × Fail

Black Background



This preview shows how the CIELCh color 80, 13.419, 38.646 looks on a black background.

Color Contrast Check

Large Text (above 18pt) WCAG AA ✓ Pass

Any Text WCAG AA ✓ Pass

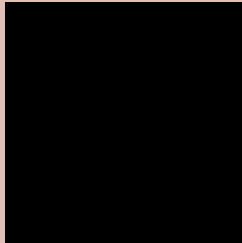
Large Text (above 18pt) WCAG AAA ✓ Pass

Any Text WCAG AAA ✓ Pass

If you want to check with other color combinations, try the [Color Contrast Checker](#).

CIELCh 80, 13.419, 38.646

Background



This preview shows how black text looks on a background with the CIELCh color 80, 13.419, 38.646.

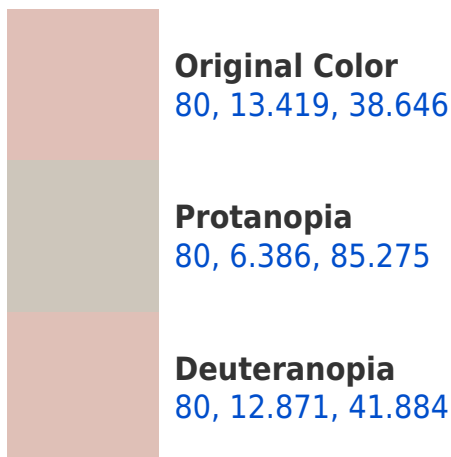



This preview shows how white text looks on a background with the CIELCh color 80, 13.419, 38.646.

Color Blindness Simulation

Color vision deficiency is a very complex topic, and I could not describe the different causes any better than Wikipedia does, so if you want to learn more, you should check out their [article about color blindness](#).

Dichromacy





Tritanopia
80, 16.510, 352.002

Trichromacy



Original Color
80, 13.419, 38.646

Protanomaly
80, 8.055, 60.783

Deuteranomaly
80, 12.871, 41.884

Tritanomaly
80, 14.382, 5.659

Monochromacy



Original Color
80, 13.419, 38.646

Achromatopsia
81, 0.010, 296.813

Achromatomaly
80, 4.736, 39.219

CSS Examples

Text

The CSS property to change the color of the text to CIELCh 80, 13.419, 38.646 is called "color". The color property can be set on classes, ids or directly on the HTML element.

This example shows how text in the color `rgb(224, 191, 183)` looks like.

```
.text, #text, p{  
    color:rgb(224, 191, 183)  
}
```

If you want to add a text shadow in that color use the text-shadow property, you can generate a text shadow directly with our [CSS Text Shadow Generator](#).

Here you see how black text with a 4 pixel rgb(224, 191, 183) colored shadow looks like.

```
.shadow{ text-shadow: 4px 4px 2px rgb(224, 191, 183) }
```

Border

The CSS property to change the border of an element to CIELCh 80, 13.419, 38.646 is called "border". The border property can be set on classes, ids or directly on the HTML element.

This example shows the color as border, it can be applied via the CSS property "border" or "border-color".

```
.border, #border, table{ border:4px solid rgb(224, 191, 183) }
```

If only the border color should be changed use the property border-color.

```
.border{ border-color:rgb(224, 191, 183) }
```

If you want to add a box shadow in that color use:

Here you see how a box with a 4 pixel rgb(224, 191, 183) colored shadow looks like.

```
.boxshadow{ -moz-box-shadow:4px 4px 4px  
4px rgb(224, 191, 183); -webkit-box-  
shadow:4px 4px 4px 4px rgb(224, 191, 183);  
box-shadow:4px 4px 4px 4px rgb(224, 191,  
183) }
```

Background

The CSS property to change the background color of an element to CIELCh 80, 13.419, 38.646 is called "background". The background property can be set on classes, ids or directly on the HTML element.

```
.background, #background, body{  
background: rgb(224, 191, 183) }
```

If only the background color should be changed can be used:

```
.background{ background-color: rgb(224,  
191, 183) }
```

This example shows the color as background, it is applied via the CSS property "background".

To optimize and compress your CSS code, you can use our [online CSS compressor and optimizer](#) based on csstidy. If you want to create a linear or radial gradient as background or border, check our [CSS Gradient Generator](#).

Hey! You found this booklet interesting? Support Converting Colors with the new Membership Option!

The pro membership hides all ads, plus gives you double the colors in the color bucket, and more awesome pro features!

[Learn more, Memberships starting at \\$2.50/m!](#)

**Follow me
on Twitter!**

@ConvertingColor